



Linear Alumiline

T & G

Product
Datasheet

ASI
ARCHITECTURAL

123 Columbia Court North,
Chaska, MN 55318
888.258.4637
952.448.6905
sales@asiarchitectural.com

Linear Alumiline T&G

This industry-first in ceiling planks is made from extruded aluminum and offers superior abuse-resistant properties. Available in two types, Tongue and Groove (T&G) and Reveal. Linear Alumiline Metal ceiling and wall system planks are offered in 4" and 6" widths and 8' and 10' lengths. Custom length sticks and custom module widths are available (minimum quantities may apply, call for details), and are an excellent choice for external applications or high humidity environments such as soffits, carports or public terminals.

FEATURES

- Fast & easy installation
- Compatible with most 15/16" HD T-Bar grid
- No special tools required for clip installation
- Washable, scrubable, mold & mildew resistant
- T&G is available in four edge options:
 - V-Groove, Flat V-Groove, Butt Joint, and Flat Reveal
- Interior and exterior applications
- Walls installation with direct attach clip
- Barrel vault instructions available using radius grid
- Abuse-resistant

FINISHES (See Page 7)

Clear anodized, powder coated or wood-grain powder coated: Maple (Natural), Birch (Light or Dark), Knotty Pine (Light or Dark), Douglas Fir (Light or Dark), Walnut (Light or Dark), Cherry (Light or Dark), Oak (Light or Dark)

SIZES

Reveal 4" module: ¾" x 3¼" plank + ¾" reveal; 10' length
Reveal 6" module: ¾" x 5¼" plank + ¾" reveal; 10' length
Linear 4" module: face width varies by profile, 10' length
(custom lengths available for all modules - call for details)

ACOUSTICAL ABSORPTION

Linear Alumiline T&G does not utilize an absorptive backer - if absorption is needed Linear Alumiline Reveal is a better option

MOUNTING OPTIONS

Direct Attach / 15/16" H.D. T-bar grid clip

FIRE RATING

Class A

WARRANTY INFO

Standard 12-month manufacturer's warranty from date of shipment covering defects in materials

ADDITIONAL PRODUCT INFORMATION:

<https://www.asiarchitectural.com/products/linear-alumiline/>



CONTENTS:

Page 3: Plank Details and System Overview
Page 4: Plank Details Continued
Page 5: 4" and 6" Module Details
Page 6: Accessory and Trim Details
Page 7: Finish Options

Plank Details



T&G V-Groove



T&G Reveal V-Groove



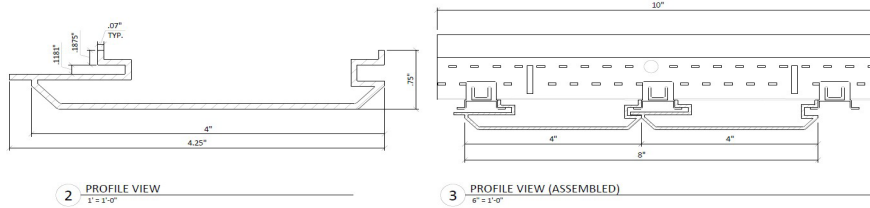
T&G Butt Joint



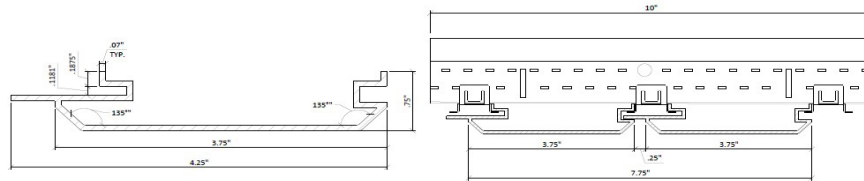
T&G Reveal

Plank Details Continued

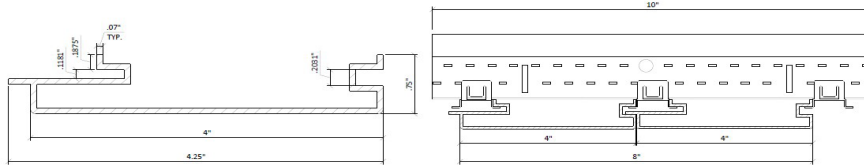
T&G V-Groove



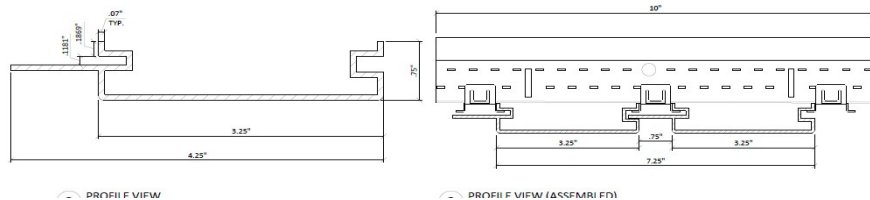
T&G Reveal V-Groove



T&G Butt Joint

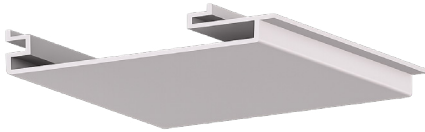


T&G Reveal

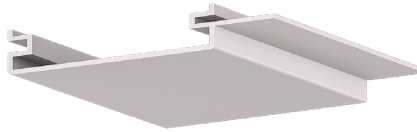


Linear Alumiline Reveal - Module Options

4" T&G Module - Flat



4" T&G Module - Reveal



Module Details

Material: Extruded Aluminum

4" Module: 3/4" x 3-1/4" wide plank + 3/4" reveal

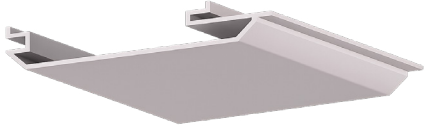
6" Module: 3/4" x 5-1/4" wide plank + 3/4" reveal

Stick Length: 10'

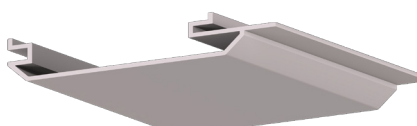
(custom lengths available - call for details)

Finish Options: Clear Anodized, Powder Coated or Wood Grain Powder Coated. See page 7 for additional information.

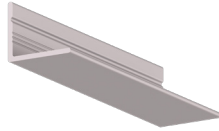
4" T&G Module - V-Groove



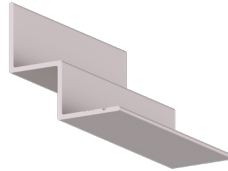
4" T&G Module - V-Groove Reveal



Accessory and Trim Details



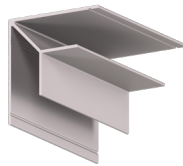
Wall Angle



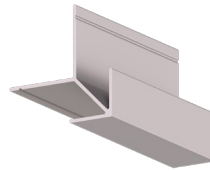
Shadow Moulding



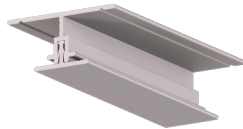
F-Trim



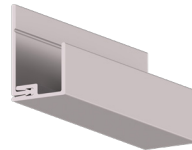
Inside Corner



Outside Corner



H-Trim
(Base and Profile)



J-Trim
(Base and Profile)

Note: H- and J-trim components are provided as two-piece assemblies designed to snap together during field installation for edge finishing of modules.

Trim Component Details

Material: Extruded Aluminum

Stick Length: 10'

Finish Options: Clear Anodized, Powder Coated or Wood Grain Powder Coated. See page 7 for additional information.

Note: Base trim for H-Trim and J-Trim are mill finish. Visible surfaces of profile will be finished as specified.

Finish Options

Powder Coated Wood Grain



Maple



Birch (light)



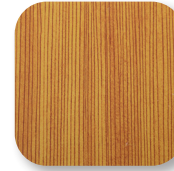
Birch (dark)



Knotty Pine
(light)



Knotty Pine
(dark)



Douglas Fir
(light)



Douglas Fir
(dark)



Walnut (light)



Walnut (dark)



Cherry (light)



Cherry (dark)



Oak (light)



Oak (dark)

Anodized

Clear



Powder Coated (solid)

color options are vast and typically powder is ordered to match a desired RAL number. Please visit the following website for color options: www.ralcolorchart.com/ral-colors



RAL-9005



RAL-7016



RAL-9006



RAL-9016



RAL-5002



RAL-2008

Color Disclaimer: Colors shown on screens or in print are approximate and may differ from the final product