



# Product Datasheet



123 Columbia Court North,  
Chaska, MN 55318  
888.258.4637  
952.448.6905  
sales@asiarchitectural.com

## Linear Alumiline Reveal

# Linear Alumiline Reveal

This industry-first in ceiling planks is made from extruded aluminum and offers superior abuse-resistant properties. Available in two types, Tongue and Groove (T&G) and Reveal. Linear Alumiline Metal ceiling and wall system planks are offered with standard 8" and 10", as well as custom lengths, and are an excellent choice for external applications or high humidity environments such as soffits, carports or public terminals.

## FEATURES

Fast & easy installation

Compatible with most 15/16" HD T-Bar grid

No special tools required for clip installation

Washable, scrubable, mold & mildew resistant

T&G is available in four edge options:

V-Groove, Flat V-Groove, Butt Joint, and Flat Reveal

Interior and exterior applications

Walls installation with direct attach clip

Barrel vault instructions available using radius grid

Abuse-resistant

## FINISHES (See Page 6)

Clear anodized, powder coated or wood-grain

powder coated: Maple (Natural), Birch (Light or Dark),

Knotty Pine (Light or Dark), Douglas Fir (Light or Dark),

Walnut (Light or Dark), Cherry (Light or Dark), Oak

(Light or Dark)

## SIZES

**Reveal 4" module:** ¾" x 3¼" plank + ¾" reveal; 10' length

**Reveal 6" module:** ¾" x 5¼" plank + ¾" reveal; 10' length

**Linear 4" module:** face width varies by profile, 10' length  
*(custom lengths available for all modules - call for details)*

## ACOUSTICAL ABSORPTION (Reveal only)

4" Module - 2" Backer - (E400) 0.80 NRC

4" Module - 1" Backer - (E400) 0.75 NRC

6" Module - 2" Backer - (E400) 0.60 NRC

## MOUNTING OPTIONS

Direct Attach / 15/16" H.D. T-bar grid clip

## FIRE RATING

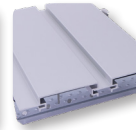
Class A

## WARRANTY INFO

Standard 12-month manufacturer's warranty from date of shipment covering defects in materials

## ADDITIONAL PRODUCT INFORMATION:

<https://www.asiarchitectural.com/products/linear-alumiline/>



## CONTENTS:

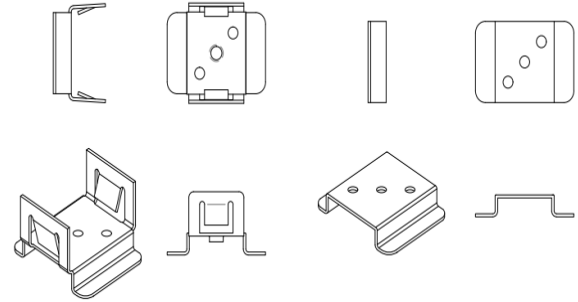
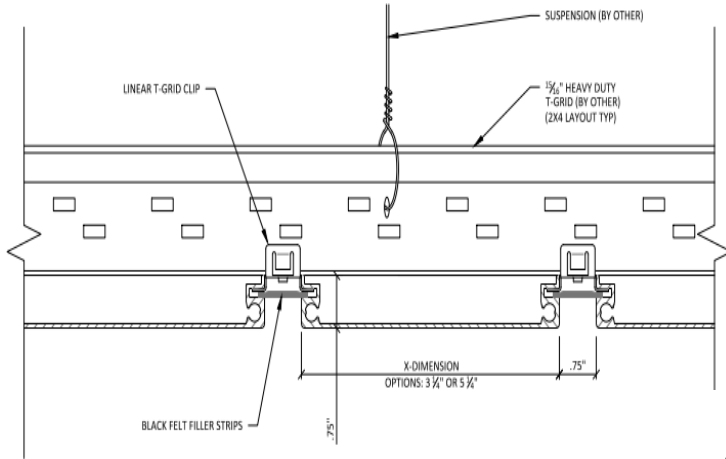
**Page 3:** Plank Details and System Overview

**Page 4:** 4" and 6" Module Details

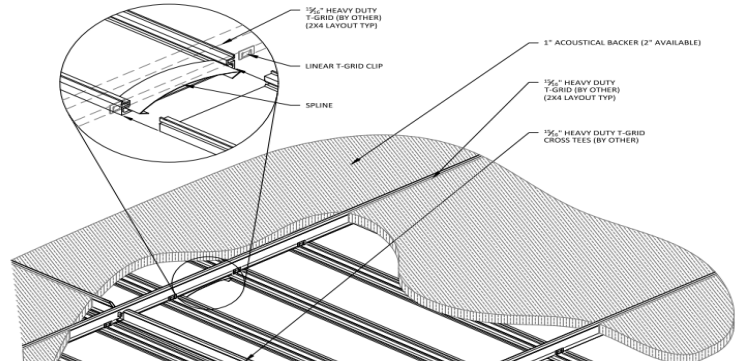
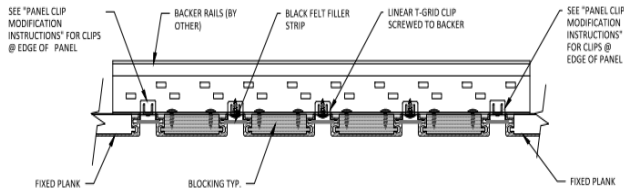
**Page 5:** Accessory and Trim Details

**Page 6:** Finish Options

# Plank Details

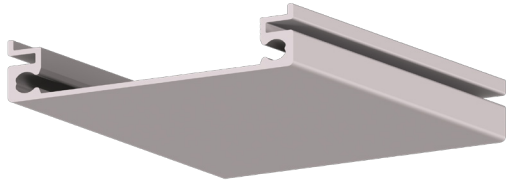


## 1 ACCESS PANEL DETAIL 1" = 1'-0"

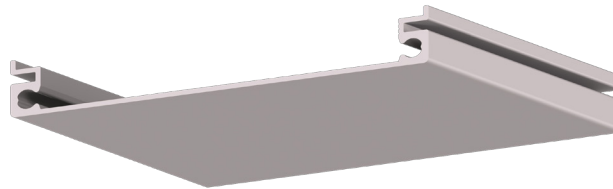


# Linear Alumiline Reveal - Module Options

4" Module



6" Module



## Module Details

**Material:** Extruded Aluminum

**4" Module:** 3/4" x 3-1/4" wide plank + 3/4" reveal

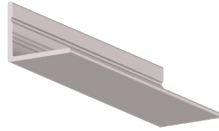
**6" Module:** 3/4" x 5-1/4" wide plank + 3/4" reveal

**Stick Length:** 10'

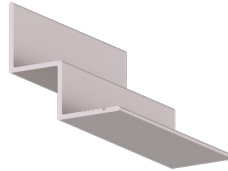
(custom lengths available - call for details)

**Finish Options:** Clear Anodized, Powder Coated or Wood Grain Powder Coated. See page 6 for additional information.

# Accessory and Trim Details



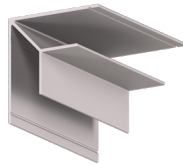
Wall Angle



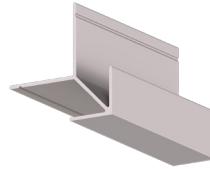
Shadow Moulding



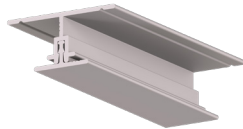
F-Trim



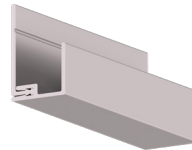
Inside Corner



Outside Corner



H-Trim  
(Base and Profile)



J-Trim  
(Base and Profile)

**Note:** H- and J-trim components are provided as two-piece assemblies designed to snap together during field installation for edge finishing of modules.

## Trim Component Details

**Material:** Extruded Aluminum

**Stick Length:** 10'

**Finish Options:** Clear Anodized, Powder Coated or Wood Grain Powder Coated. See page 6 for additional information.

**Note:** Base trim for H-Trim and J-Trim are mill finish. Visible surfaces of profile will be finished as specified.

# Finish Options

## Powder Coated Wood Grain



Maple



Birch (light)



Birch (dark)



Knotty Pine  
(light)



Knotty Pine  
(dark)



Douglas Fir  
(light)



Douglas Fir  
(dark)



Walnut (light)



Walnut (dark)



Cherry (light)



Cherry (dark)



Oak (light)



Oak (dark)

## Anodized

Clear



RAL-9005



RAL-7016



RAL-9006



RAL-9016



RAL-5002



RAL-2008

## Powder Coated (solid)

color options are vast and typically powder is ordered to match a desired RAL number.

Please visit the following website for color options: [www.ralcolorchart.com/ral-colors](http://www.ralcolorchart.com/ral-colors)

*Color Disclaimer: Colors shown on screens or in print are approximate and may differ from the final product*