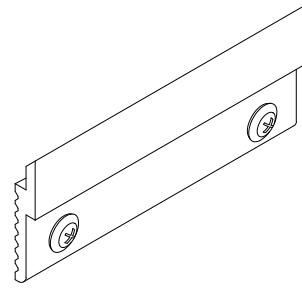
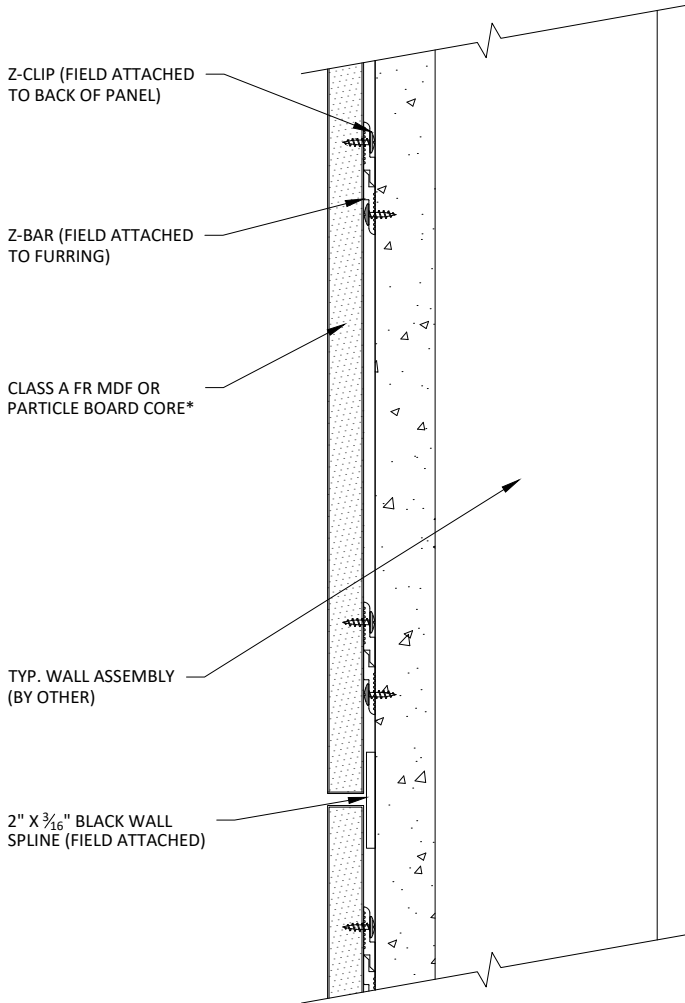


\* PANELS MAY BE PERFORATED (AS SPECIFIED) IN WHICH CASE, ACOUSTICAL BACKER IS RECOMMENDED (1" OR 2" OPTIONS)

\*\* 1" ACOUSTICAL BACKER RECOMMENDED FOR USE WITH PERFORATED PANELS (2" AVAILABLE)



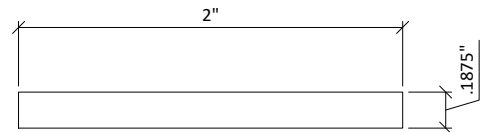
2 Z-CLIP DETAIL  
6" = 1'-0"



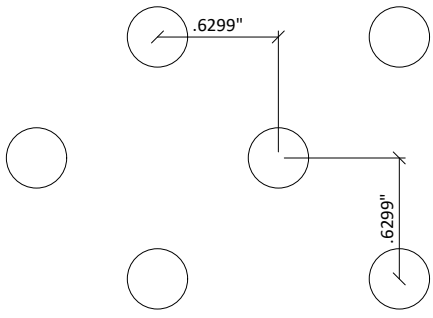
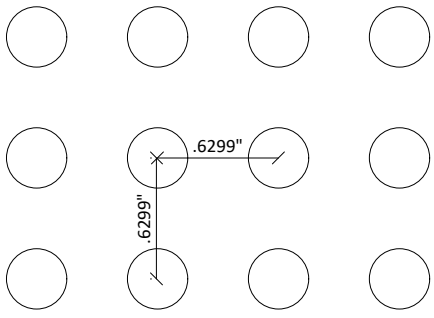
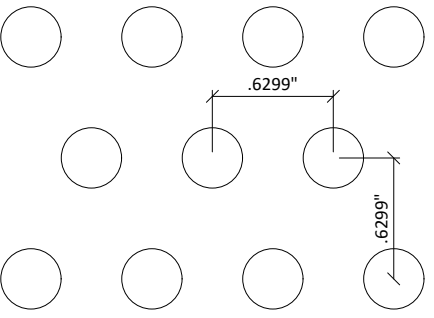
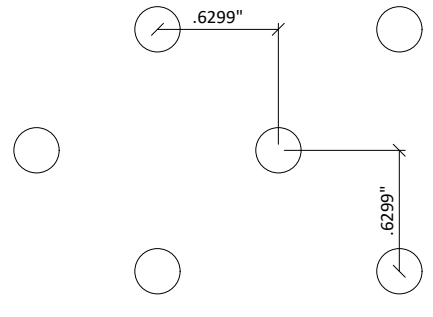
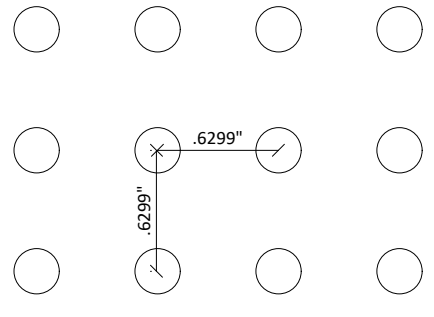
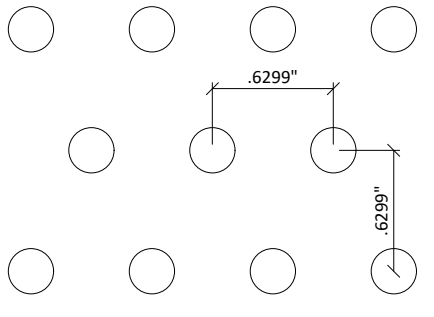
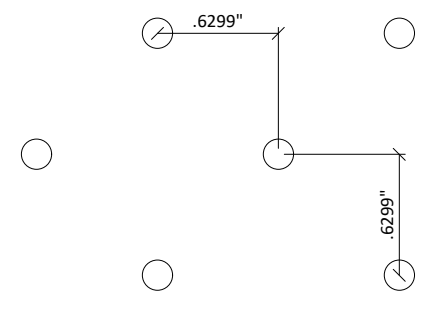
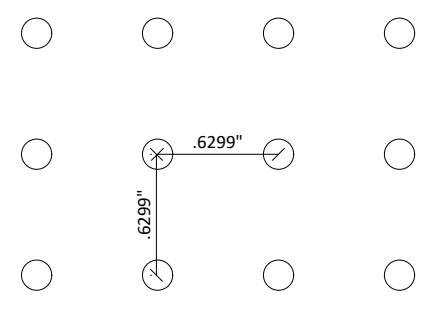
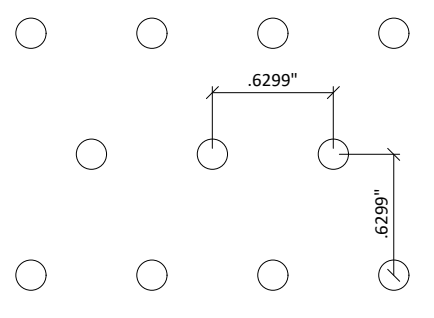
1 TYPICAL SECTION  
3" = 1'-0"



3 Z-BAR & Z-CLIP PROFILE  
1' = 1'-0"



4 WALL SPLINE PROFILE  
1' = 1'-0"

 <p>7.7% OPEN AREA</p>	 <p>13.8% OPEN AREA</p>	 <p>13.8% OPEN AREA</p>
<b>DIAMOND: 8MM DIA./16MM SPACING</b>	<b>SQUARE: 8MM DIA./16MM SPACING</b>	<b>STAGGERED: 8MM DIA./16MM SPACING</b>
 <p>4.4% OPEN AREA</p>	 <p>7.9% OPEN AREA</p>	 <p>7.9% OPEN AREA</p>
<b>DIAMOND: 6MM DIA./16MM SPACING</b>	<b>SQUARE: 6MM DIA./16MM SPACING</b>	<b>STAGGERED: 6MM DIA./16MM SPACING</b>
 <p>2.0% OPEN AREA</p>	 <p>3.6% OPEN AREA</p>	 <p>3.6% OPEN AREA</p>
<b>DIAMOND: 4MM DIA./16MM SPACING</b>	<b>SQUARE: 4MM DIA./16MM SPACING</b>	<b>STAGGERED: 4MM DIA./16MM SPACING</b>

<p>3.1% OPEN AREA</p>	<p>6.2% OPEN AREA</p>	<p>4.6% OPEN AREA</p>
<b>DIAMOND: 8MM DIA./32MM SPACING</b>	<b>SQUARE: 8MM DIA./32MM SPACING</b>	<b>STAGGERED: 8MM DIA./32MM SPACING</b>
<p>1.8% OPEN AREA</p>	<p>3.5% OPEN AREA</p>	<p>2.6% OPEN AREA</p>
<b>DIAMOND: 6MM DIA./32MM SPACING</b>	<b>SQUARE: 6MM DIA./32MM SPACING</b>	<b>STAGGERED: 6MM DIA./32MM SPACING</b>
<p>0.8% OPEN AREA</p>	<p>1.6% OPEN AREA</p>	<p>1.2% OPEN AREA</p>
<b>DIAMOND: 4MM DIA./32MM SPACING</b>	<b>SQUARE: 4MM DIA./32MM SPACING</b>	<b>STAGGERED: 4MM DIA./32MM SPACING</b>

2" X 3/16" WALL SPLINE (PAINTED BLACK)

TYP. WALL ASSEMBLY (BY OTHER)

FURRING (BY OTHER) TO MATCH ACOUSTICAL BACKER THICKNESS

ACOUSTICAL BACKER\*

Z-BAR (FIELD ATTACHED TO FURRING)

TRIM (OPTIONAL) TO COINCIDE W/ FURRING THICKNESS; FACE NAILED & PUTTIED IN FIELD

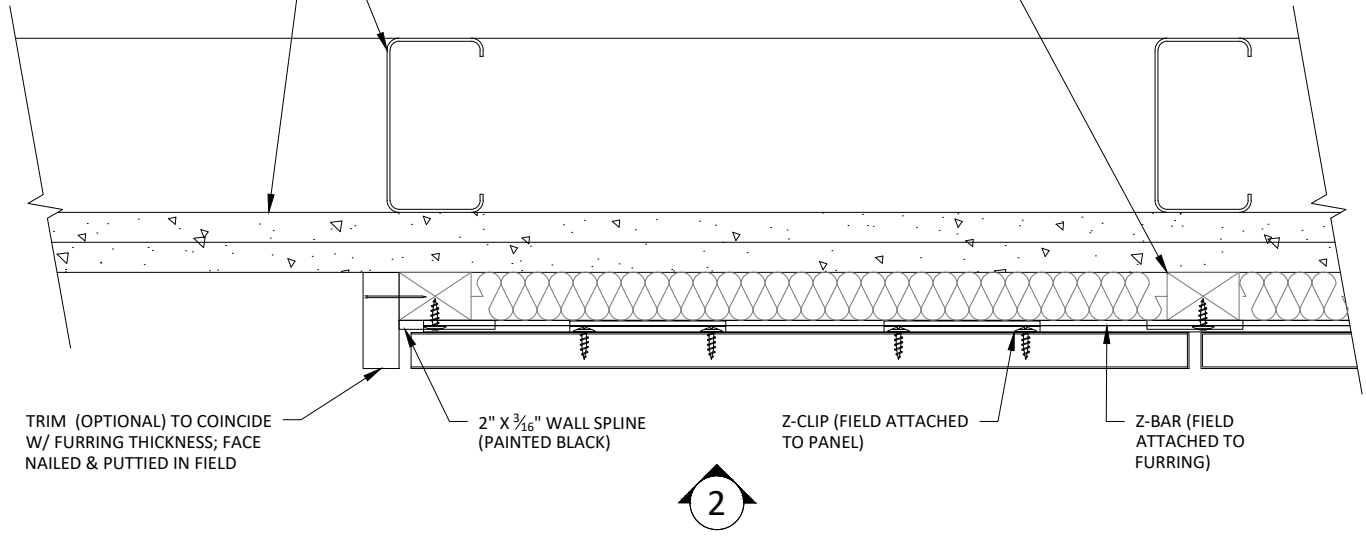
16 GA. FINISH NAIL (BY OTHER)

\* 1" ACOUSTICAL BACKER RECOMMENDED FOR USE WITH PERFORATED PANELS (2" AVAILABLE)

**1** WALL SYSTEM ISOMETRIC  
1 1/2" = 1'-0"

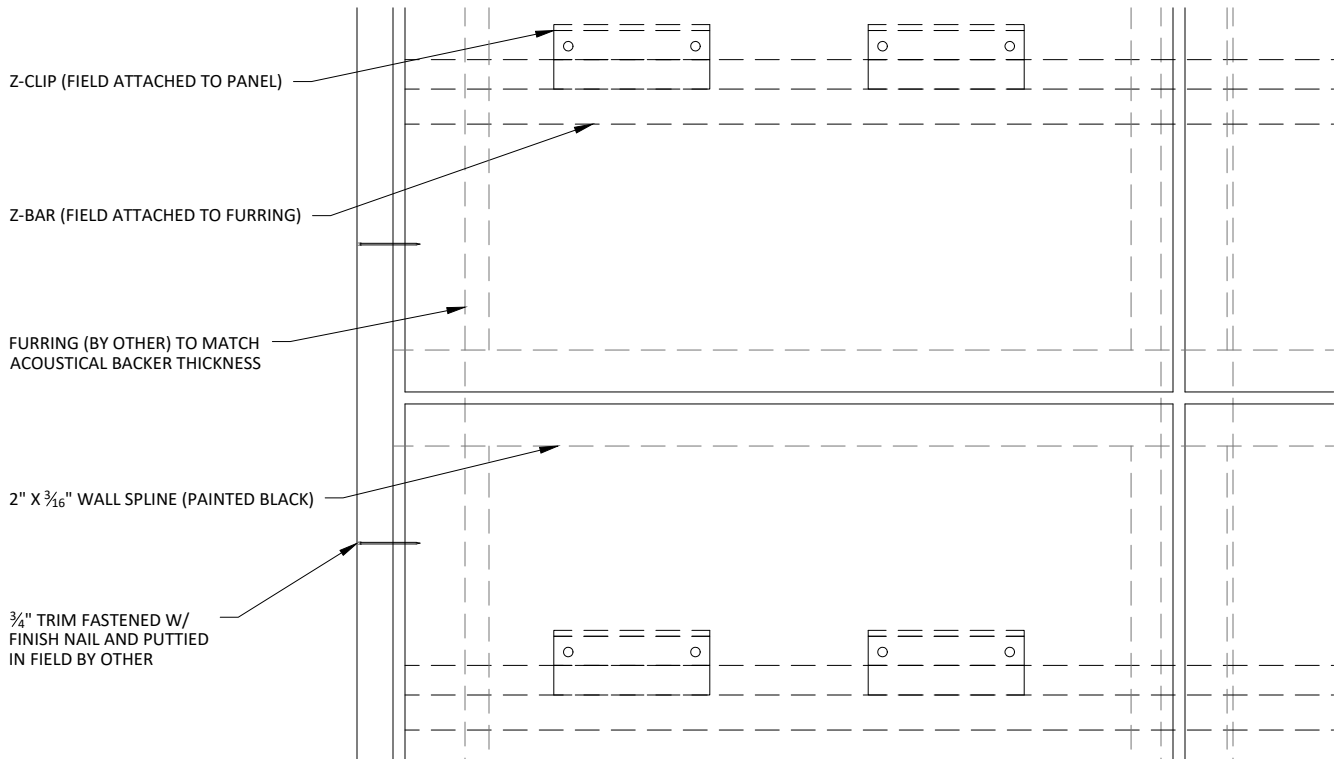
TYP. WALL ASSEMBLY (BY OTHER)

FURRING (BY OTHER)  
TO MATCH ACOUSTICAL  
BACKER THICKNESS



**1 TRIM CONDITION PLAN**

3" = 1'-0"



**2 TRIM CONDITION ELEVATION**

3" = 1'-0"

\*\* 1" ACOUSTICAL BACKER  
RECOMMENDED FOR USE  
WITH PERFORATED PANELS  
(2" AVAILABLE)

Z-BAR (FIELD ATTACHED TO FURRING)

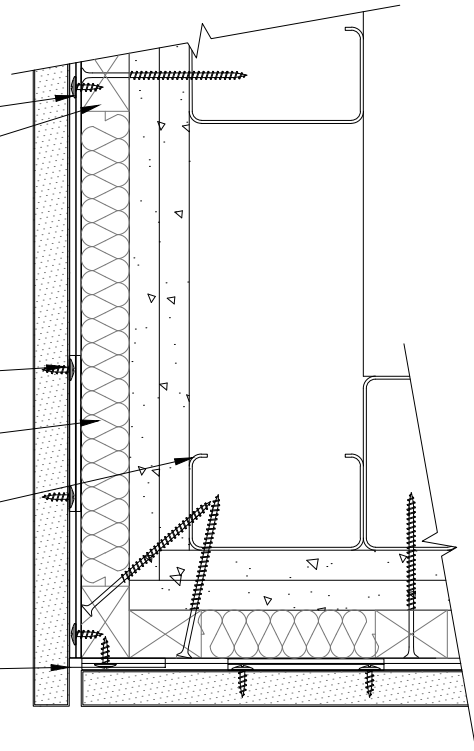
FURRING (BY OTHER) TO MATCH  
ACOUSTICAL BACKER THICKNESS

Z-CLIP (FIELD ATTACHED TO PANEL)

ACOUSTICAL BACKER\*\*

TYP. WALL ASSEMBLY (BY OTHER)

2" X 3/16" WALL SPLINE (PAINTED BLACK)



**1** OUTSIDE CORNER DETAIL  
3" = 1'-0"

\*\* 1" ACOUSTICAL BACKER  
RECOMMENDED FOR USE  
WITH PERFORATED PANELS  
(2" AVAILABLE)

FURRING (BY OTHER) TO MATCH  
ACOUSTICAL BACKER THICKNESS

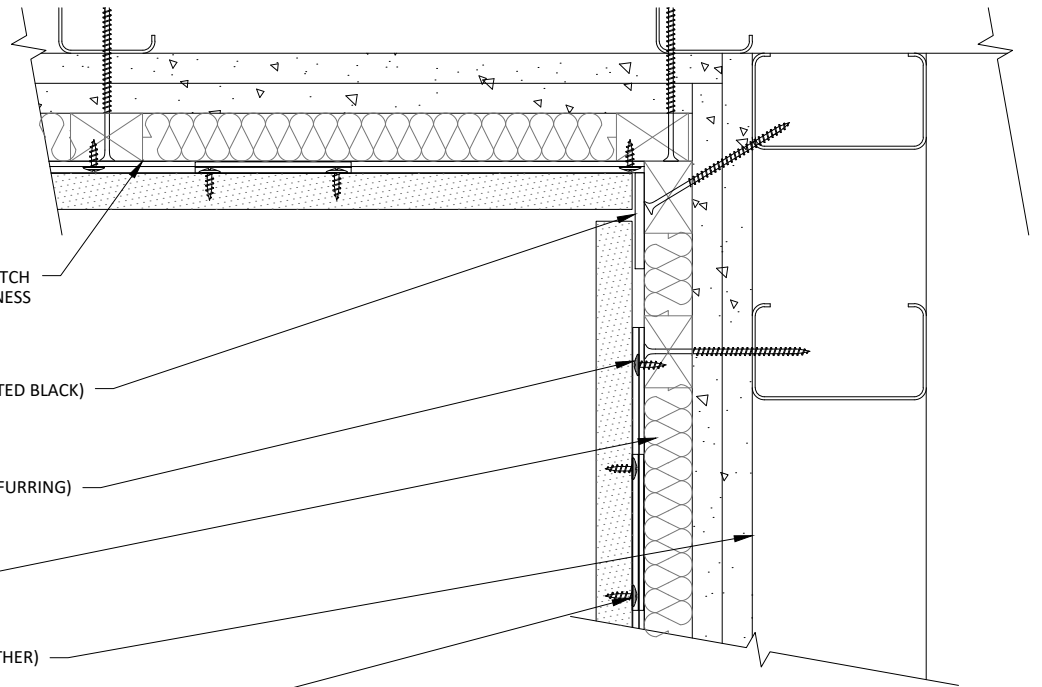
2" X 3/16" WALL SPLINE (PAINTED BLACK)

Z-BAR (FIELD ATTACHED TO FURRING)

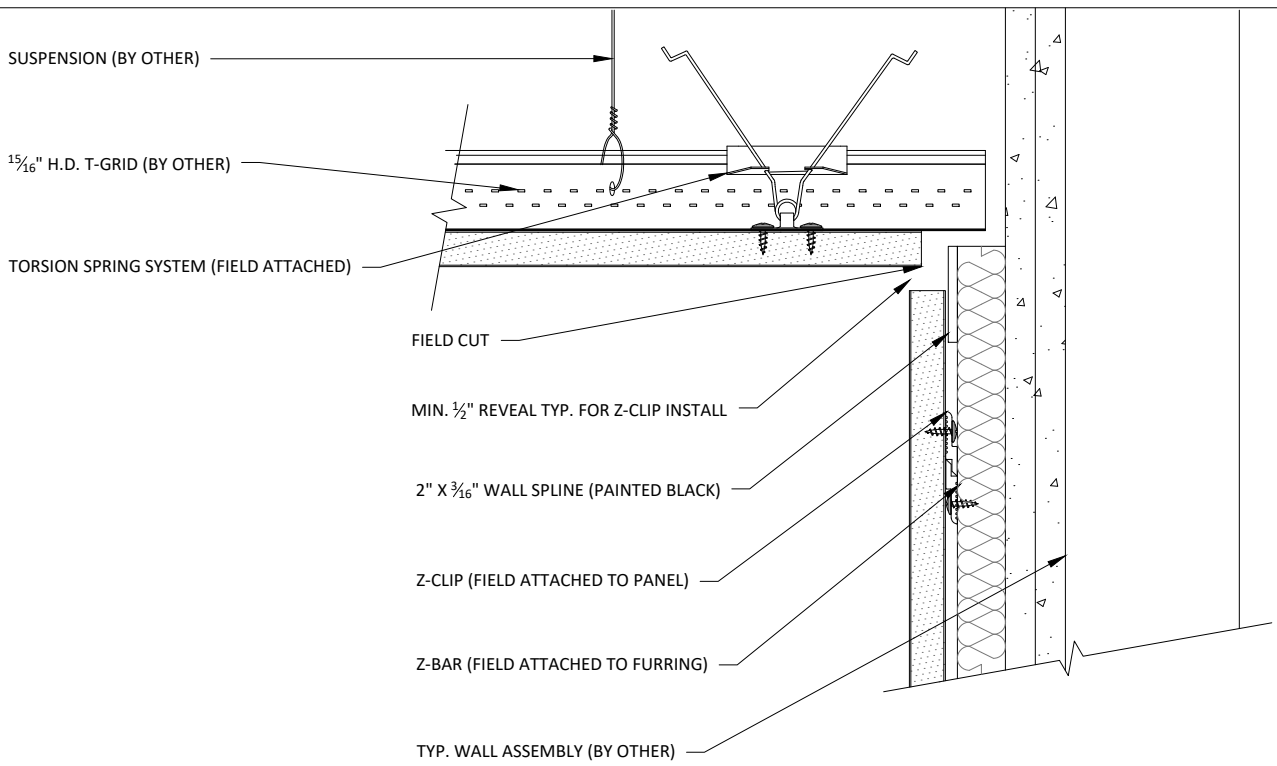
ACOUSTICAL BACKER\*\*

TYP. WALL ASSEMBLY (BY OTHER)

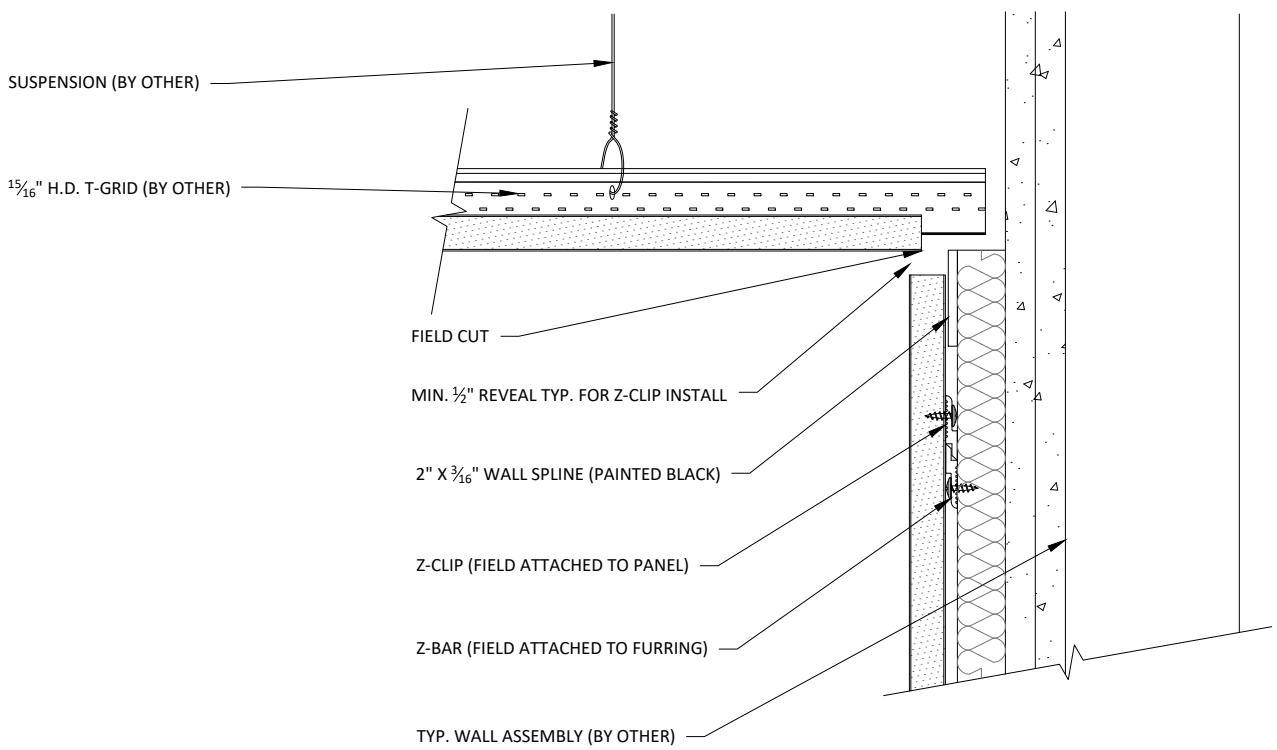
Z-CLIP (FIELD ATTACHED TO PANEL)



**2** INSIDE CORNER DETAIL  
3" = 1'-0"



**1** WALL-TO-TORSION SPRING CEILING DETAIL  
3" = 1'-0"



**2** WALL-TO-SPLINED (OR RABBETED) PANEL CEILING DETAIL  
3" = 1'-0"

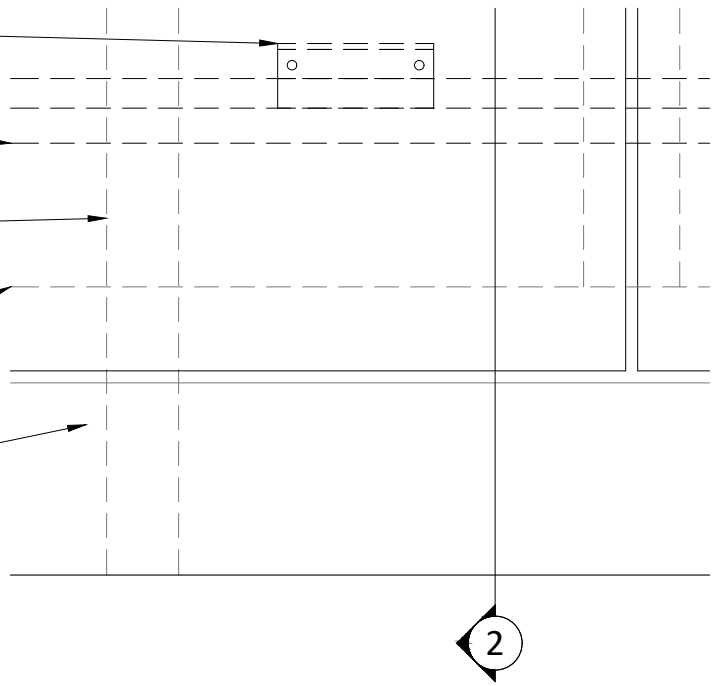
Z-CLIP (FIELD ATTACHED TO BACK OF PANEL)

Z-BAR (FIELD ATTACHED TO FURRING)

FURRING (BY OTHER) TO MATCH  
ACOUSTICAL BACKER THICKNESS

2" X 3/16" WALL SPLINE (PAINTED BLACK)

BASE AS SCHEDULED (BY OTHER)



**1** BASEBOARD DETAIL ELEVATION  
3" = 1'-0"

\*\* 1" ACOUSTICAL BACKER RECOMMENDED FOR  
USE WITH PERFORATED PANELS (2" AVAILABLE)

Z-CLIP (FIELD ATTACHED TO BACK OF PANEL)

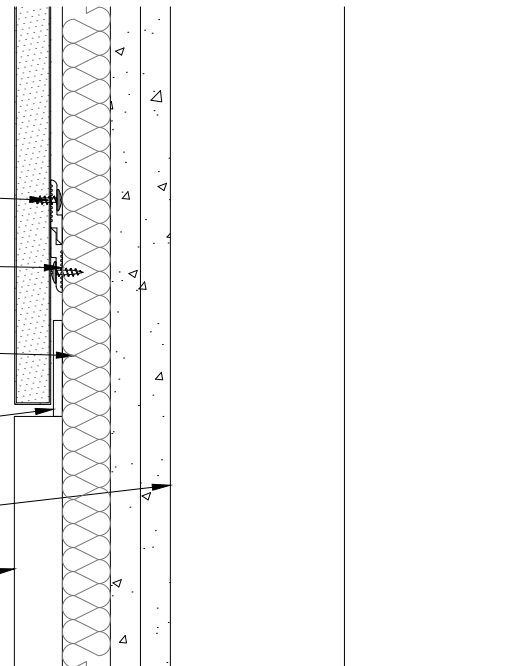
Z-BAR (FIELD ATTACHED TO FURRING)

ACOUSTICAL BACKER\*\*

2" X 3/16" WALL SPLINE (PAINTED BLACK)

TYP. WALL ASSEMBLY (BY OTHER)

BASE AS SCHEDULED (BY OTHER)



**2** BASEBOARD DETAIL SECTION  
3" = 1'-0"



Z-CLIP (FIELD ATTACHED TO BACK OF PANEL)

Z-BAR (FIELD ATTACHED TO FURRING)

FURRING (BY OTHER) TO MATCH  
ACOUSTICAL BACKER THICKNESS

CUSTOMER PROVIDED FIXTURE  
(FIELD CUT PENETRATION)

2" X 3/16" WALL SPLINE (PAINTED BLACK)

2

### 1 OUTLET ELEVATION

3" = 1'-0"

\*\* 1" ACOUSTICAL BACKER RECOMMENDED FOR  
USE WITH PERFORATED PANELS (2" AVAILABLE)

Z-CLIP (FIELD ATTACHED TO BACK OF PANEL)

Z-BAR (FIELD ATTACHED TO FURRING)

ACOUSTICAL BACKER\*\*

CUSTOMER PROVIDED FIXTURE  
(FIELD CUT PENETRATION)

TYP. WALL ASSEMBLY (BY OTHER)

2" X 3/16" WALL SPLINE (PAINTED BLACK)

### 2 OUTLET SECTION

3" = 1'-0"



123 Columbia Court North, Chaska,  
Minnesota 55318 P. 800.527.6253

## FUSION (WALL SYSTEM) - OUTLET DETAIL

SCALE: AS NOTED

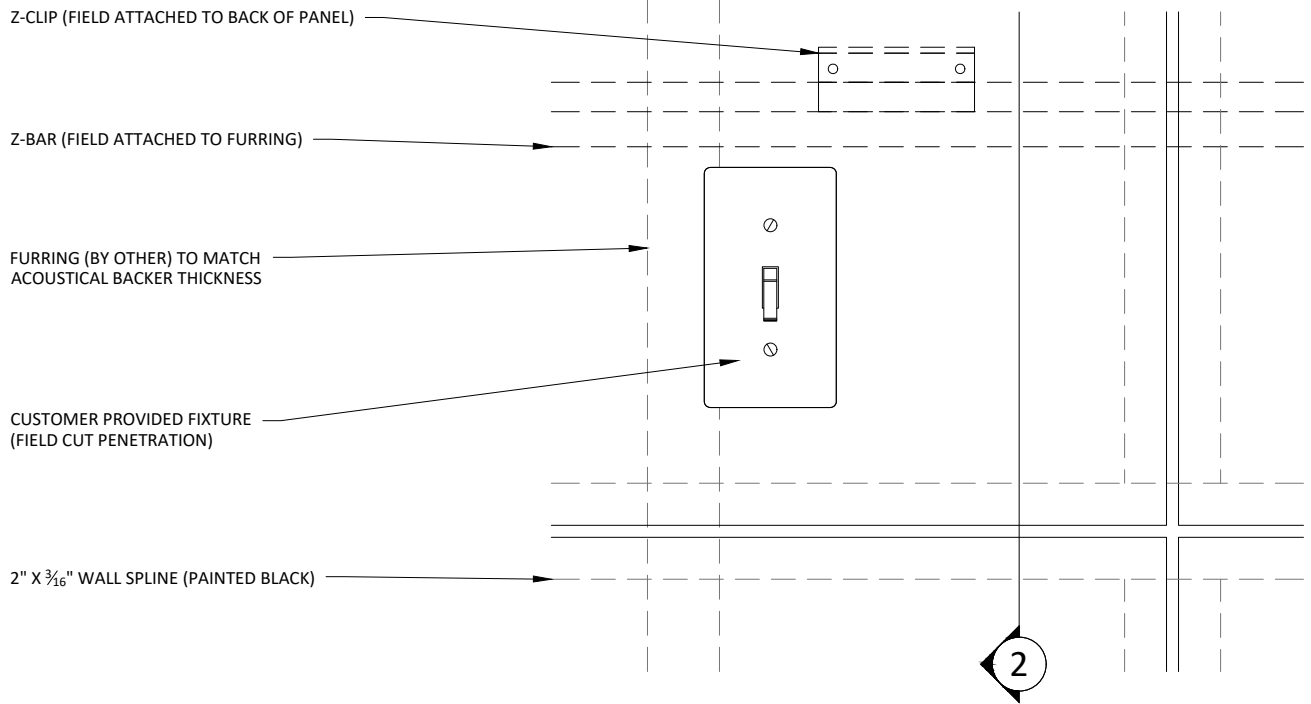
LAST REVISED: 1/21/2025

DO NOT SCALE DRAWING. FIGURED DIMENSIONS ARE TO BE FOLLOWED. READ THIS DRAWING IN CONNECTION WITH GENERAL ARCHITECTURAL PLANS, STRUCTURAL PLANS, AND OTHER RELATED DRAWINGS. THESE DRAWINGS REPRESENT ASI'S  
UNDERSTANDING AND INTERPRETATION OF THE ARCHITECTURAL DRAWINGS AND HOW ASI PRODUCTS RELATE TO THE PROJECT. COPYRIGHT ASI © 2025

SHEET NUMBER

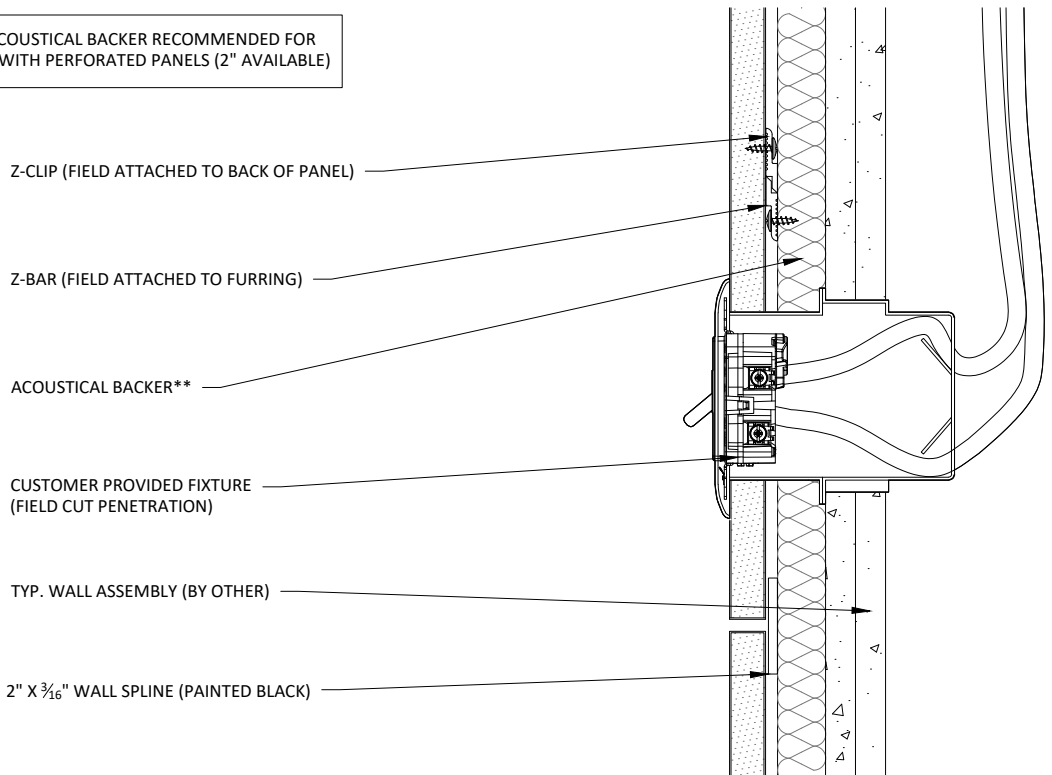
9

DRAWN BY: BH



**1** LIGHT SWITCH ELEVATION  
3" = 1'-0"

\*\* 1" ACOUSTICAL BACKER RECOMMENDED FOR USE WITH PERFORATED PANELS (2" AVAILABLE)



**2** LIGHT SWITCH SECTION  
3" = 1'-0"