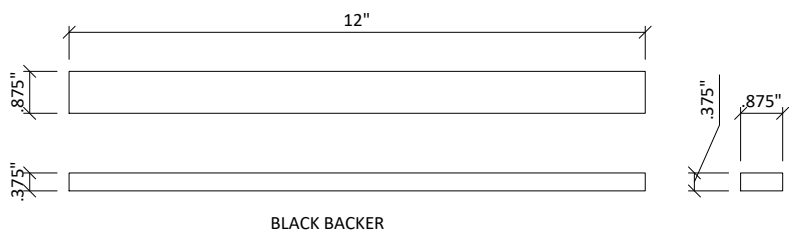
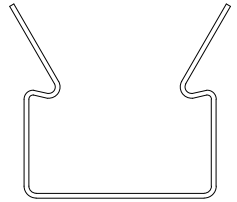
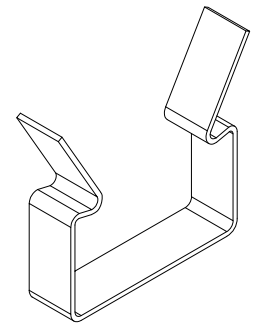
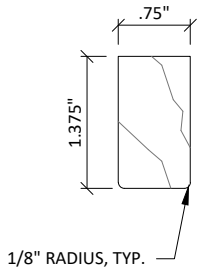


① GRILLE-BACKERED SECTION DETAIL
3" = 1'-0"



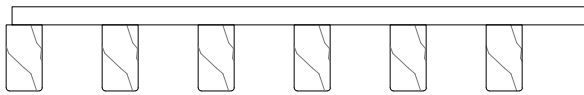
② BACKER CLIP
1' = 1'-0"

③ 12 INCH BACKER
3" = 1'-0"

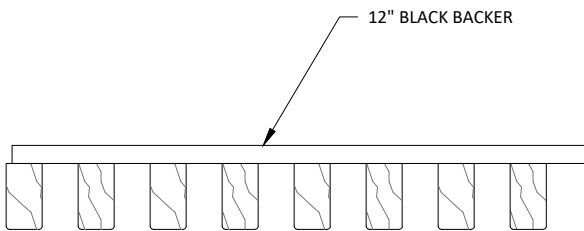


CUSTOM PROFILES AVAILABLE UPON REQUEST

1 TYPICAL RAIL PROFILES
6" = 1'-0"



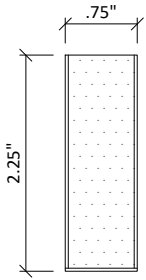
3/4" X 1 3/8" RAILS
6 RAIL/FT.
2" SPACING O.C.



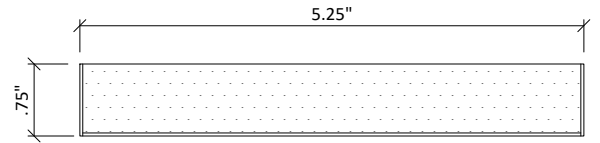
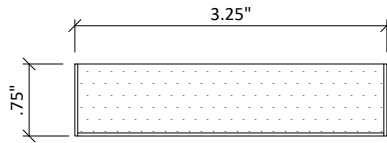
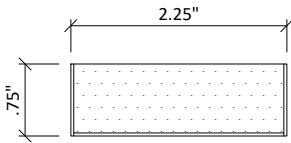
12" BLACK BACKER
3/4" X 1 3/8" RAILS
8 RAIL/FT.
1 1/2" SPACING O.C.

2 TYPICAL 12 INCH GRILLE MODULES
3" = 1'-0"

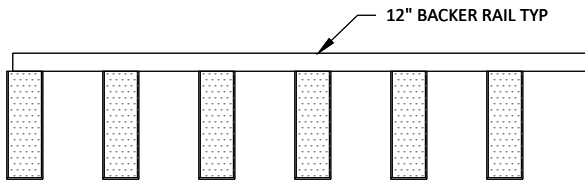
CUSTOM PROFILES AVAILABLE
UPON REQUEST



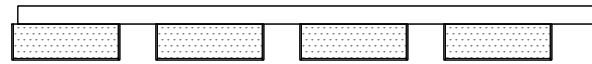
STANDARD RAIL SIZE OPTIONS					
WIDTH	3/4	3/4	2 1/4	3 1/4	5 1/4
HEIGHT	2 1/4	1 3/8	3/4	3/4	3/4



1 TYPICAL VENEERED PROFILES
6" = 1'-0"



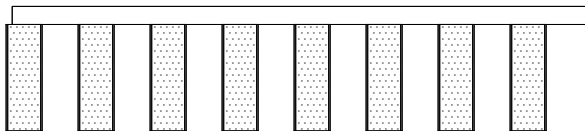
3/4" X 2 1/4" RAILS
6 RAIL/FT.
2" SPACING O.C.



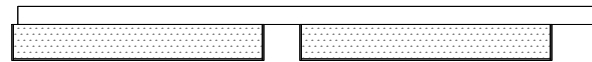
2 1/4" X 3/4" RAILS
4 RAIL/FT.
3" SPACING O.C.



3 1/4" X 3/4" RAILS
3 RAIL/FT.
4" SPACING O.C.

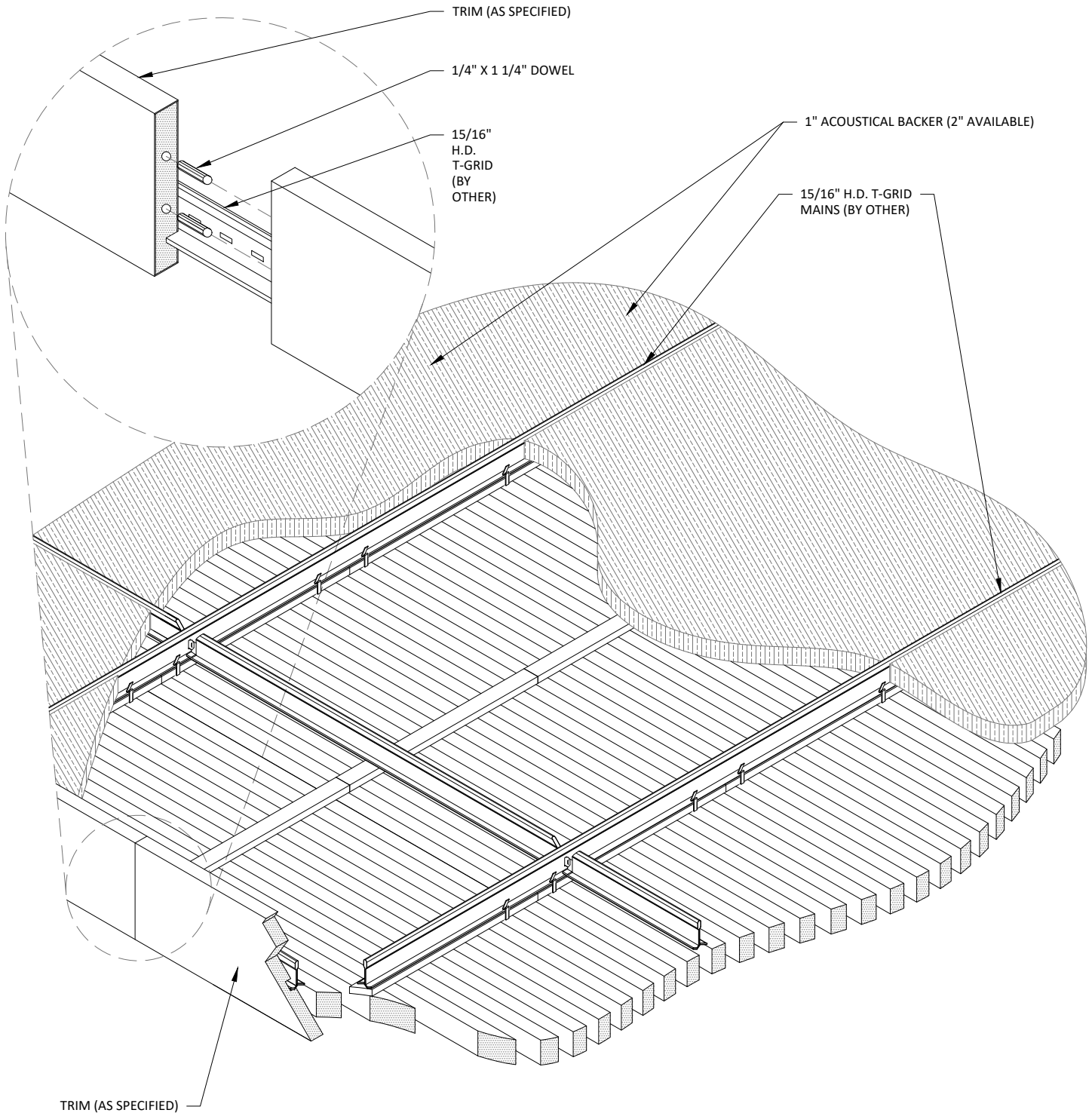


3/4" X 2 1/4" RAILS
8 RAIL/FT.
1 1/2" SPACING O.C.

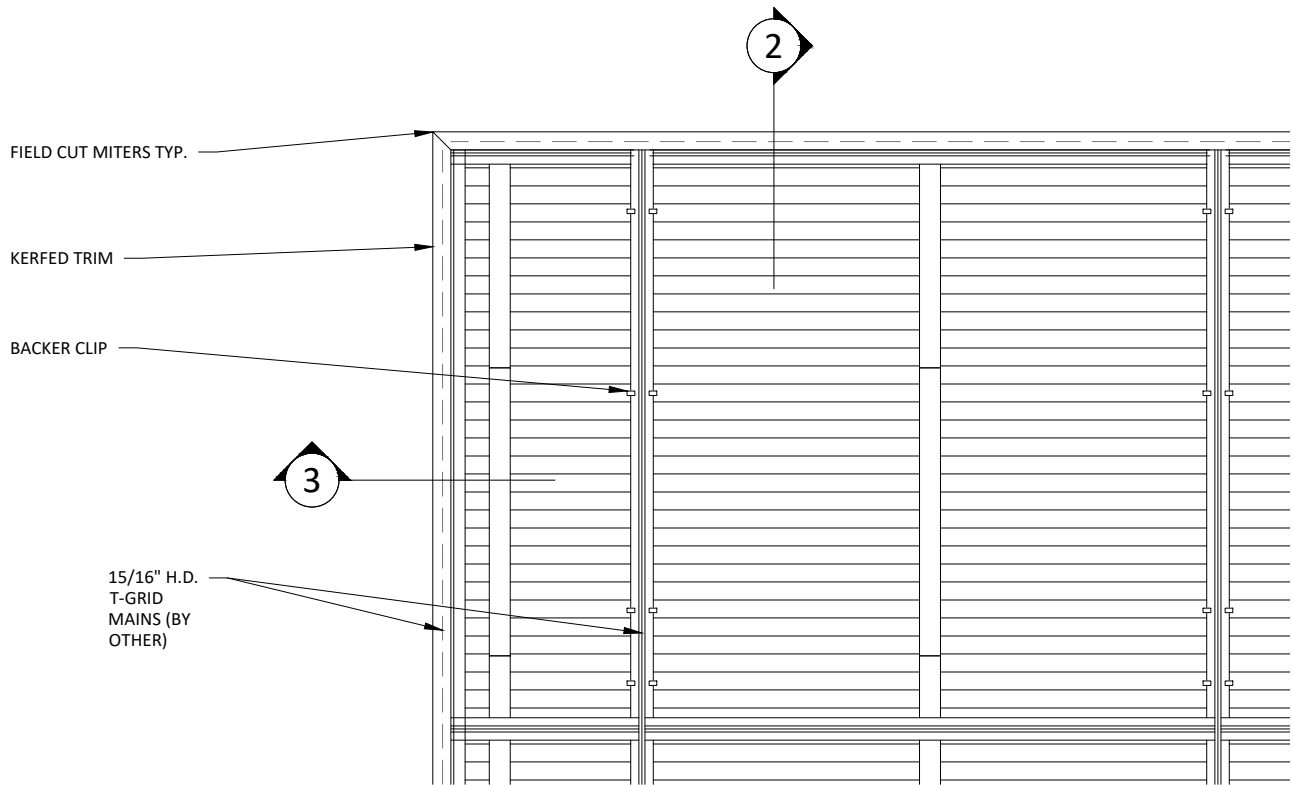


5 1/4" X 3/4" RAILS
2 RAIL/FT.
6" SPACING O.C.

2 TYPICAL 12 INCH VENEERED MODULES
3" = 1'-0"

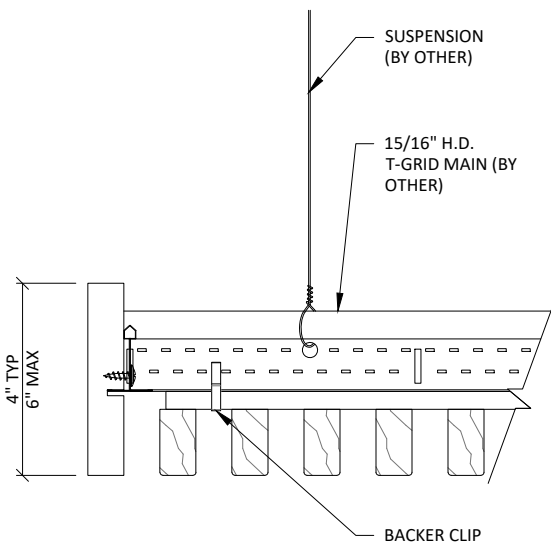


1 CEILING ISOMETRIC - TYP.
1 1/2" = 1'-0"

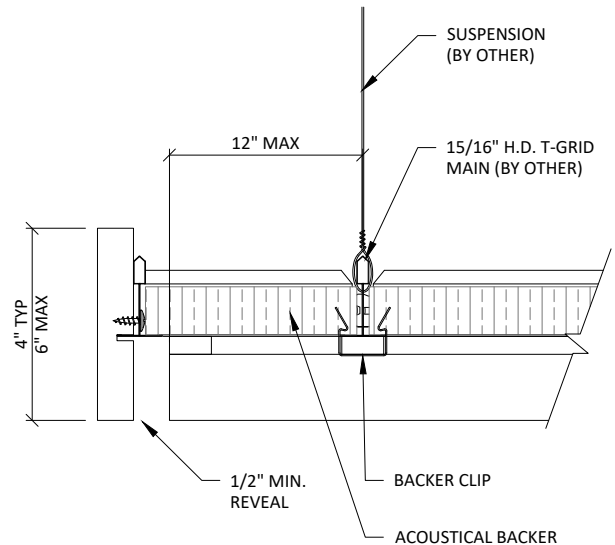


1 TRIM @ MITERED CORNER - PLAN
 1 1/2" = 1'-0"

** ALL FIELD CUTS TO ALLOW FOR 1/4" MIN REVEAL FOR EXPANSION & CONTRACTION

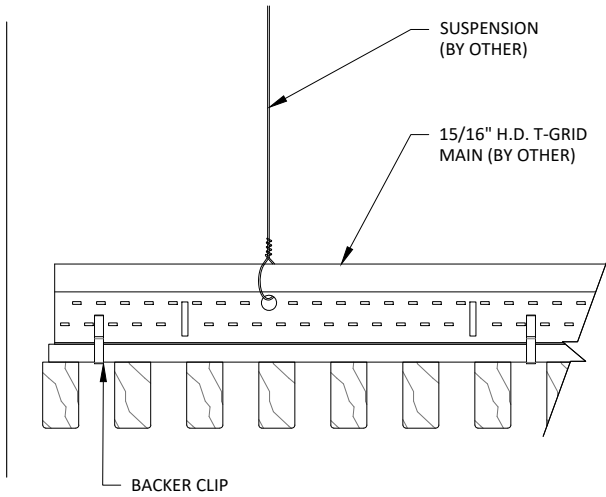


2 TRIM DETAIL 1
 3" = 1'-0"

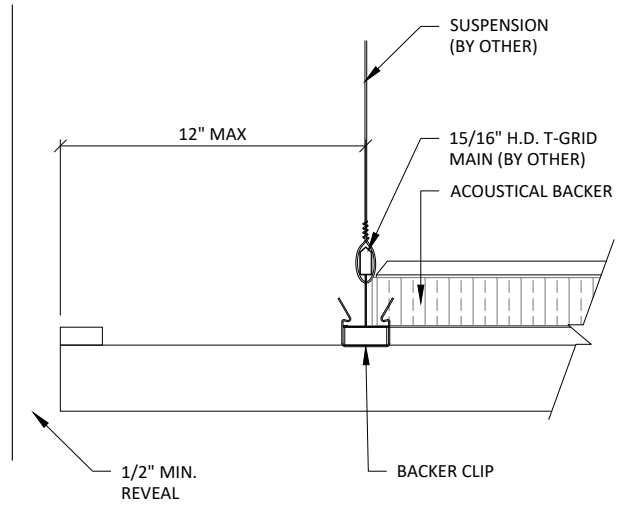


3 TRIM DETAIL 2
 3" = 1'-0"

** ALL FIELD CUTS TO ALLOW FOR 1/4" MIN REVEAL FOR EXPANSION & CONTRACTION

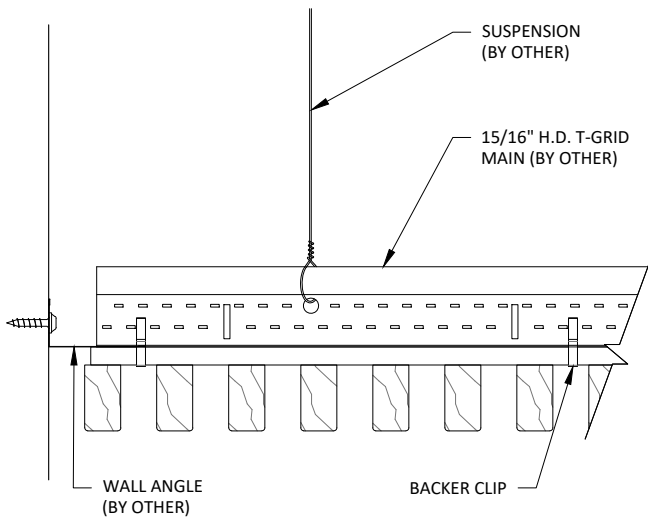


1 EDGE DETAIL 1
3" = 1'-0"

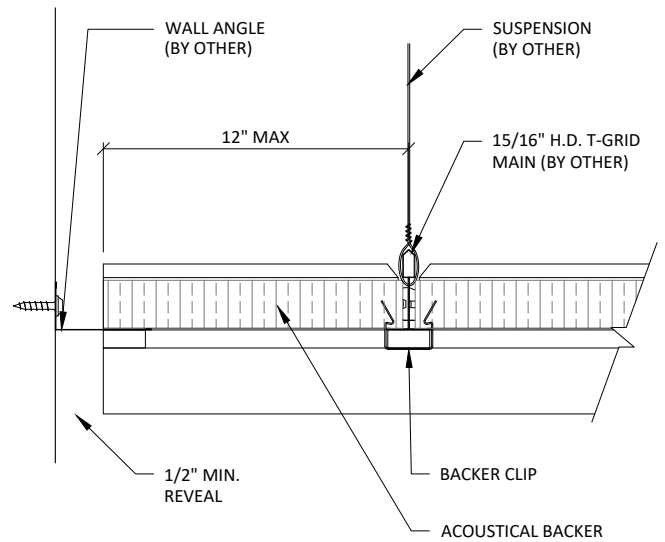


2 EDGE DETAIL 2
3" = 1'-0"

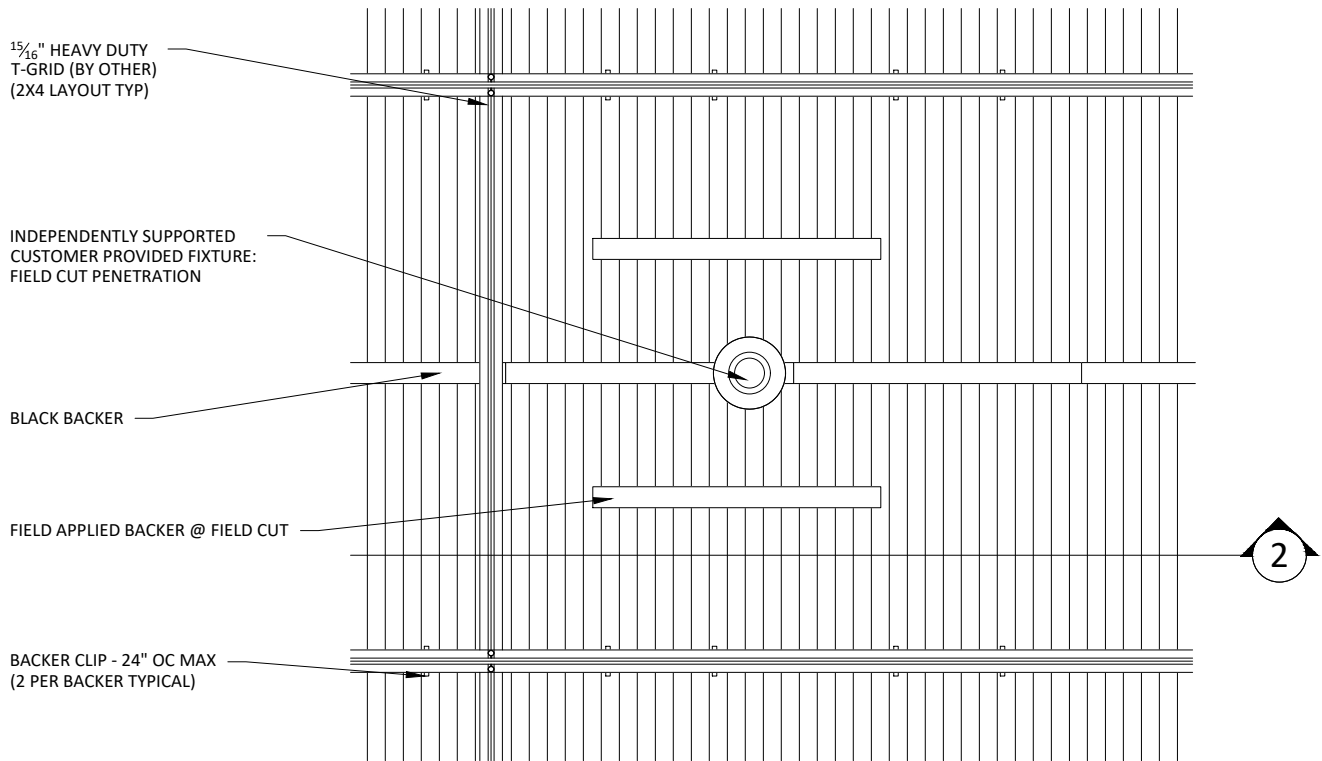
** ALL FIELD CUTS TO ALLOW FOR 1/4" MIN REVEAL FOR EXPANSION & CONTRACTION



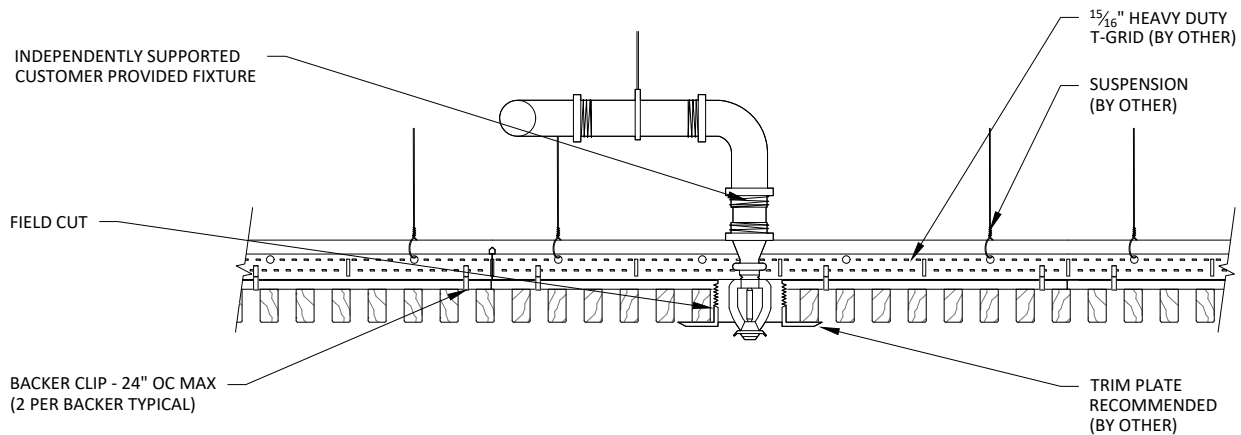
3 EDGE DETAIL 3
3" = 1'-0"



4 EDGE DETAIL 4
3" = 1'-0"



1 SPRINKLER HEAD DETAIL - PLAN VIEW
 1 1/2" = 1'-0"



2 SPRINKLER HEAD DETAIL - SECTION VIEW
 1 1/2" = 1'-0"

15/16" HEAVY DUTY
T-GRID (BY OTHER)
(2X4 LAYOUT TYP)

INDEPENDENTLY SUPPORTED
CUSTOMER PROVIDED FIXTURE:
FIELD CUT PENETRATION

BLACK BACKER

FIELD APPLIED BACKER @ FIELD CUT

BACKER CLIP - 24" OC MAX
(2 PER BACKER TYPICAL)

2

1

CAN LIGHT DETAIL - PLAN VIEW

1 1/2" = 1'-0"

INDEPENDENTLY SUPPORTED
CUSTOMER PROVIDED FIXTURE

FIELD CUT

BACKER CLIP - 24" OC MAX
(2 PER BACKER TYPICAL)

15/16" HEAVY DUTY
T-GRID (BY OTHER)

SUSPENSION
(BY OTHER)

TRIM PLATE
RECOMMENDED
(BY OTHER)

2

CAN LIGHT DETAIL - SECTION VIEW

1 1/2" = 1'-0"



123 Columbia Court North, Chaska,
Minnesota 55318 P. 800.527.6253

GRILLE-BACKERED (CEILING SYSTEM) - CAN LIGHT DETAILS

SCALE: AS NOTED

LAST REVISED: 6/29/2023

DO NOT SCALE DRAWING. FIGURED DIMENSIONS ARE TO BE FOLLOWED. READ THIS DRAWING IN CONNECTION WITH GENERAL ARCHITECTURAL PLANS, STRUCTURAL PLANS, AND OTHER RELATED DRAWINGS. THESE DRAWINGS REPRESENT ASI'S UNDERSTANDING AND INTERPRETATION OF THE ARCHITECTURAL DRAWINGS AND HOW ASI PRODUCTS RELATE TO THE PROJECT. COPYRIGHT ASI © 2023

SHEET NUMBER

8

DRAWN BY: BMH

15/16" HEAVY DUTY
T-GRID (BY OTHER)
(2X4 LAYOUT TYP)

INDEPENDENTLY SUPPORTED
CUSTOMER PROVIDED FIXTURE:
FIELD CUT PENETRATION

BLACK BACKER

FIELD APPLIED BACKER @ FIELD CUT

BACKER CLIP - 24" OC MAX
(2 PER BACKER TYPICAL)

BLA
TO I

FURRI
ACOUST

LIGHT SWIT

1" ACOUST

LIGHT SWIT

BLA
TO I

TYP. W

1 PENDANT LIGHT DETAIL - PLAN VIEW
1 1/2" = 1'-0"

INDEPENDENTLY SUPPORTED
CUSTOMER PROVIDED FIXTURE

FIELD CUT

BACKER CLIP - 24" OC MAX
(2 PER BACKER TYPICAL)

15/16" HEAVY DUTY
T-GRID (BY OTHER)

SUSPENSION
(BY OTHER)

TRIM PLATE
RECOMMENDED
(BY OTHER)

1/

TYI

BL
TO

1/2"

2 PENDANT LIGHT DETAIL - SECTION VIEW
1 1/2" = 1'-0"

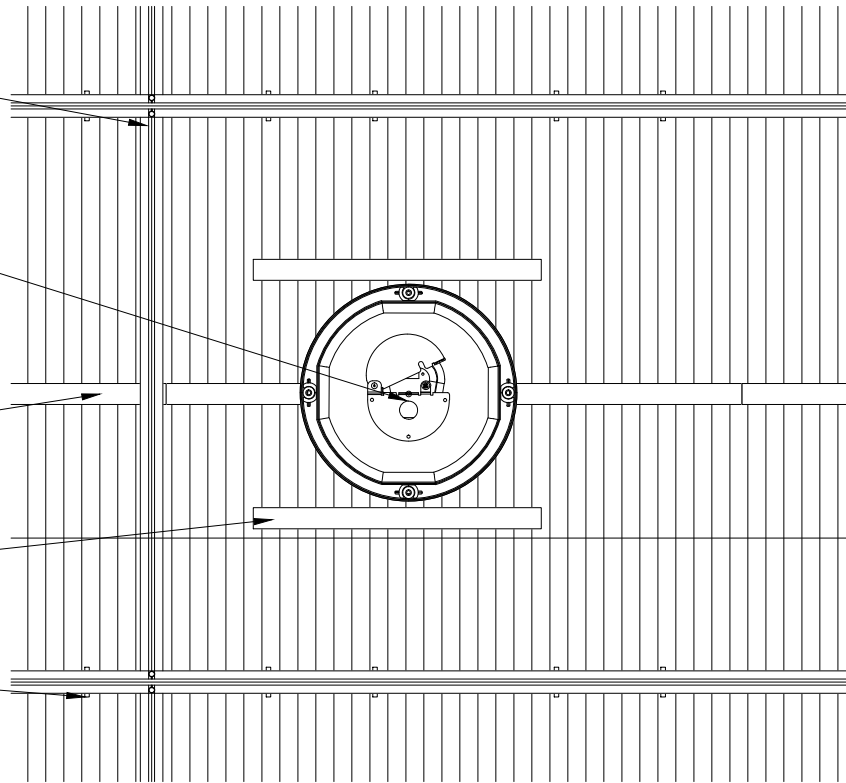
15/16" HEAVY DUTY
T-GRID (BY OTHER)
(2X4 LAYOUT TYP)

INDEPENDENTLY SUPPORTED
CUSTOMER PROVIDED FIXTURE:
FIELD CUT PENETRATION

BLACK BACKER

FIELD APPLIED BACKER @ FIELD CUT

BACKER CLIP - 24" OC MAX
(2 PER BACKER TYPICAL)



2

1 RECESSED SPEAKER DETAIL - PLAN VIEW
1 1/2" = 1'-0"

INDEPENDENTLY SUPPORTED
CUSTOMER PROVIDED FIXTURE

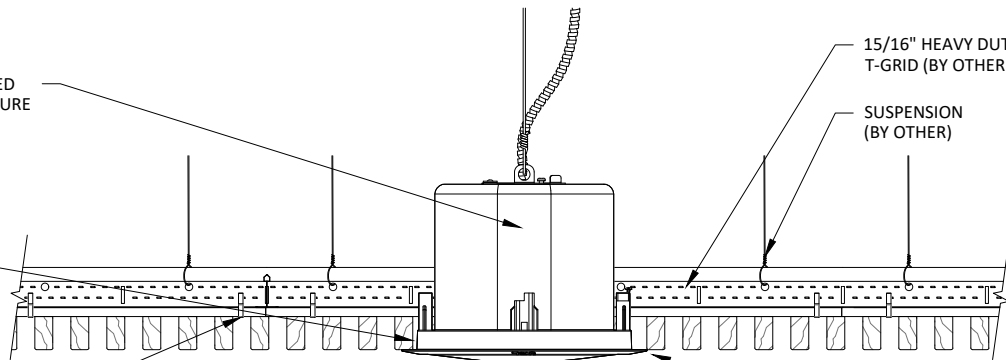
FIELD CUT

BACKER CLIP - 24" OC MAX
(2 PER BACKER TYPICAL)

15/16" HEAVY DUTY
T-GRID (BY OTHER)

SUSPENSION
(BY OTHER)

TRIM PLATE
RECOMMENDED
(BY OTHER)



2 RECESSED SPEAKER DETAIL - SECTION VIEW
1 1/2" = 1'-0"

15/16" HEAVY DUTY
T-GRID (BY OTHER)
(2X4 LAYOUT TYP)

INDEPENDENTLY SUPPORTED
CUSTOMER PROVIDED FIXTURE:
FIELD CUT PENETRATION

BLACK BACKER

FIELD APPLIED BACKER @ FIELD CUT

BACKER CLIP - 24" OC MAX
(2 PER BACKER TYPICAL)

2

1 DIFFUSER DETAIL - PLAN VIEW
1 1/2" = 1'-0"

INDEPENDENTLY SUPPORTED
CUSTOMER PROVIDED FIXTURE

FIELD CUT

BACKER CLIP - 24" OC MAX
(2 PER BACKER TYPICAL)

15/16" HEAVY DUTY
T-GRID (BY OTHER)

SUSPENSION
(BY OTHER)

TRIM PLATE
RECOMMENDED
(BY OTHER)

2 DIFFUSER DETAIL - SECTION VIEW
1 1/2" = 1'-0"

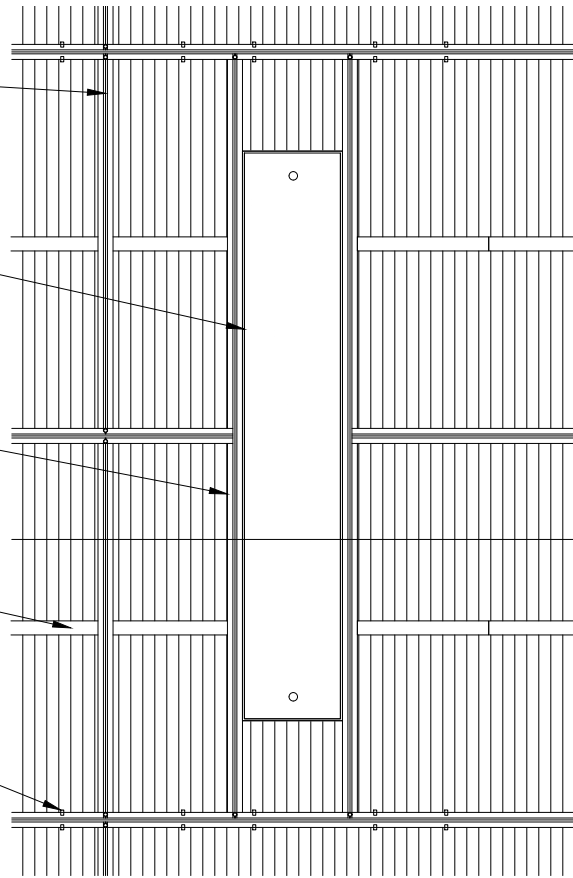
15/16" HEAVY DUTY
T-GRID (BY OTHER)
(2x4 LAYOUT TYP)

INDEPENDENTLY SUPPORTED
LINEAR LIGHT: FIELD CUT
PENETRATION

STUB-IN GRID AS NECESSARY

BLACK BACKER

BACKER CLIP - 24" OC MAX
(2 PER BACKER TYPICAL)



2

1 LINEAR LIGHT DETAIL - PLAN VIEW
1" = 1'-0"

INDEPENDENTLY SUPPORTED
CUSTOMER PROVIDED FIXTURE

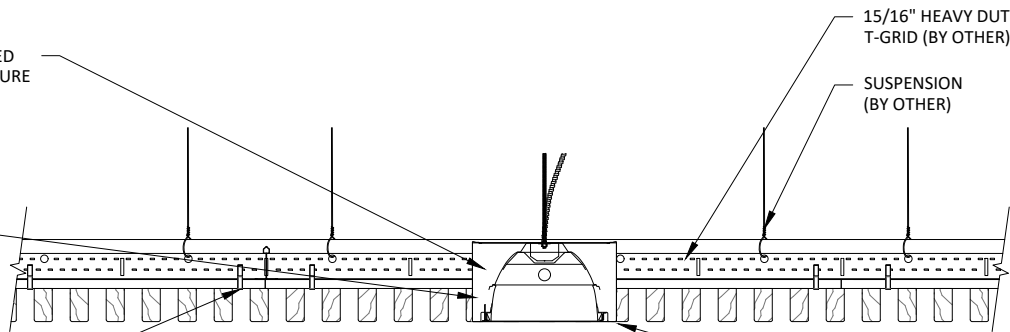
FIELD CUT

BACKER CLIP - 24" OC MAX
(2 PER BACKER TYPICAL)

15/16" HEAVY DUTY
T-GRID (BY OTHER)

SUSPENSION
(BY OTHER)

TRIM PLATE
RECOMMENDED
(BY OTHER)



2 LINEAR LIGHT DETAIL - SECTION VIEW
1 1/2" = 1'-0"



GRILLE-BACKERED (CEILING SYSTEM) - LINEAR LIGHT DETAILS

SCALE: AS NOTED

LAST REVISED: 6/29/2023

DO NOT SCALE DRAWING. FIGURED DIMENSIONS ARE TO BE FOLLOWED. READ THIS DRAWING IN CONNECTION WITH GENERAL ARCHITECTURAL PLANS, STRUCTURAL PLANS, AND OTHER RELATED DRAWINGS. THESE DRAWINGS REPRESENT ASI'S UNDERSTANDING AND INTERPRETATION OF THE ARCHITECTURAL DRAWINGS AND HOW ASI PRODUCTS RELATE TO THE PROJECT. COPYRIGHT ASI © 2023

SHEET NUMBER

12

DRAWN BY: BMH

1" ACOUSTICAL BACKER
(2" AVAILABLE)

TYP. WALL ASSEMBLY
(BY OTHER)

FURRING (BY OTHER) TO MATCH
ACOUSTICAL BACKER THICKNESS

BLACK BACKER

2" SCREW (BY OTHER)

GRILLE RAIL

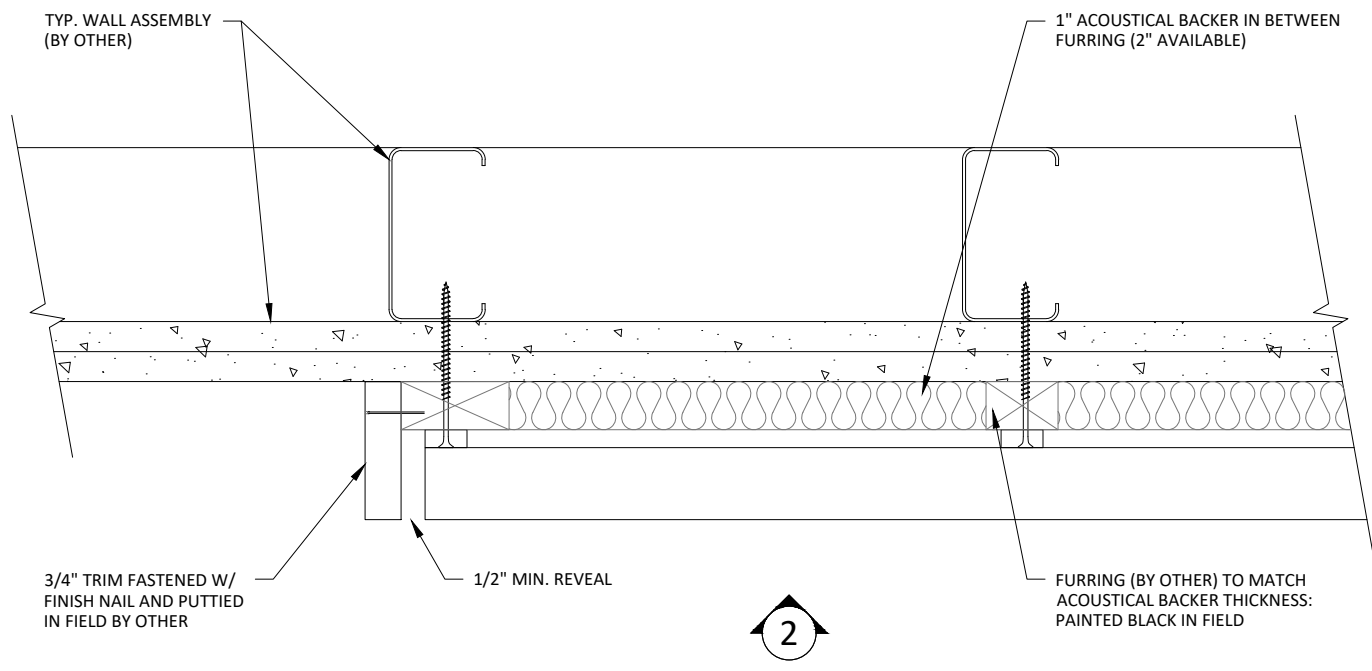
1/2" REVEAL
FOR
EXPANSION &
CONTRACTION

16 GA. FINISH NAIL (BY OTHER)

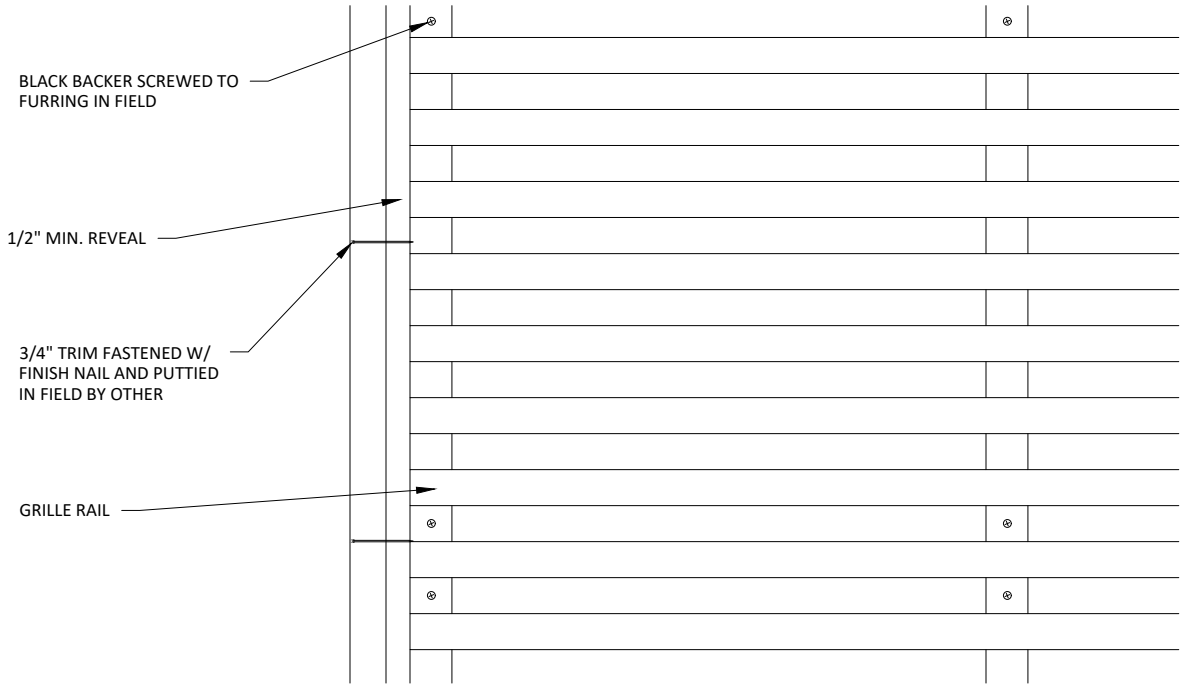
TRIM (OPTIONAL) TO COINCIDE
W/ FURRING THICKNESS; FACE
NAILED & PUTTIED IN FIELD

NOTE: 24" MAXIMUM SCREW/SUPPORT SPACING

1 HORIZONTAL WALL ISOMETRIC - TYP.
1 1/2" = 1'-0"



1 HORIZONTAL WALL PLAN @ TRIM
3" = 1'-0"



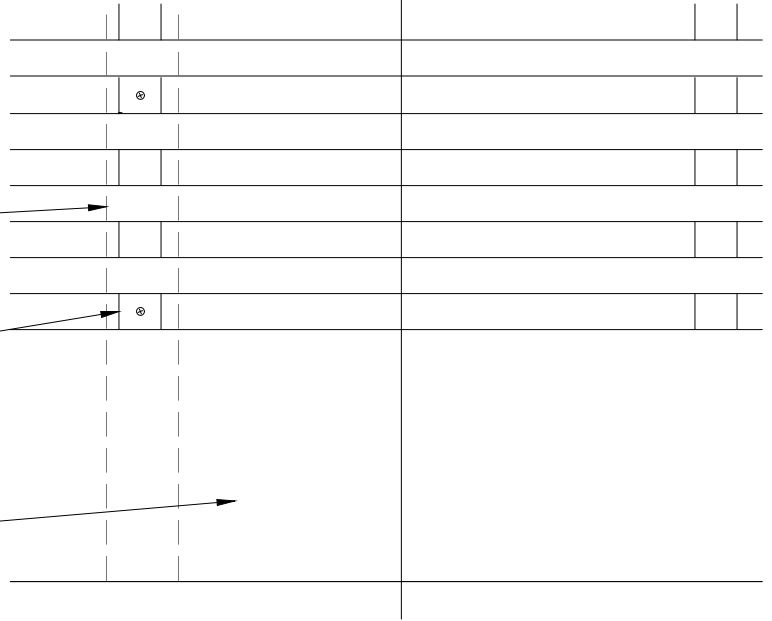
2 HORIZONTAL WALL ELEVATION @ TRIM
3" = 1'-0"

2

FURRING (BY OTHER) TO MATCH ACOUSTICAL BACKER THICKNESS

BLACK BACKER SCREWED TO FURRING IN FIELD

BASE AS SCHEDULED (BY OTHER)



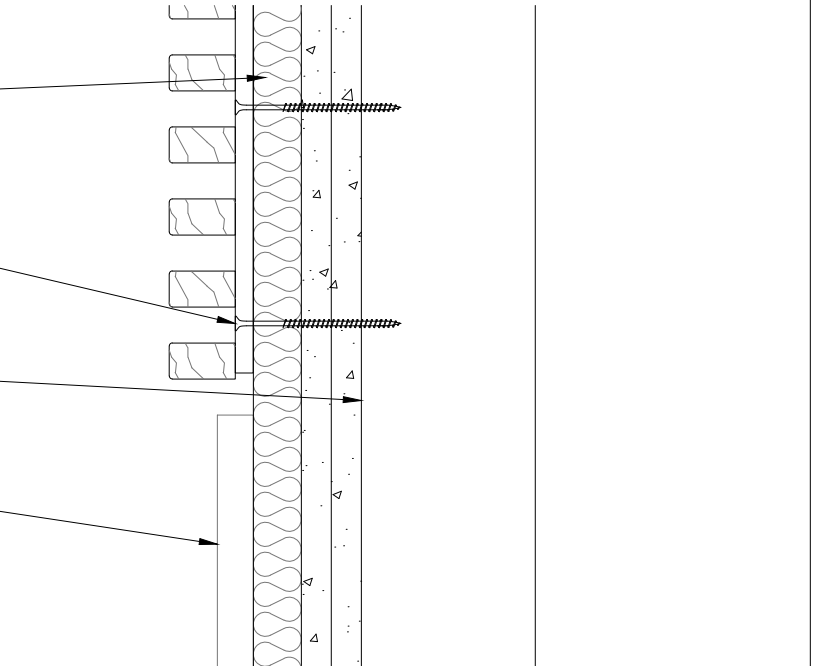
1 HORIZONTAL WALL ELEVATION @ BASEBOARD
3" = 1'-0"

1" ACOUSTICAL BACKER (2" AVAILABLE)

BLACK BACKER SCREWED TO FURRING IN FIELD

TYP. WALL SYSTEM (BY OTHER)

BASE AS SCHEDULED (BY OTHER)

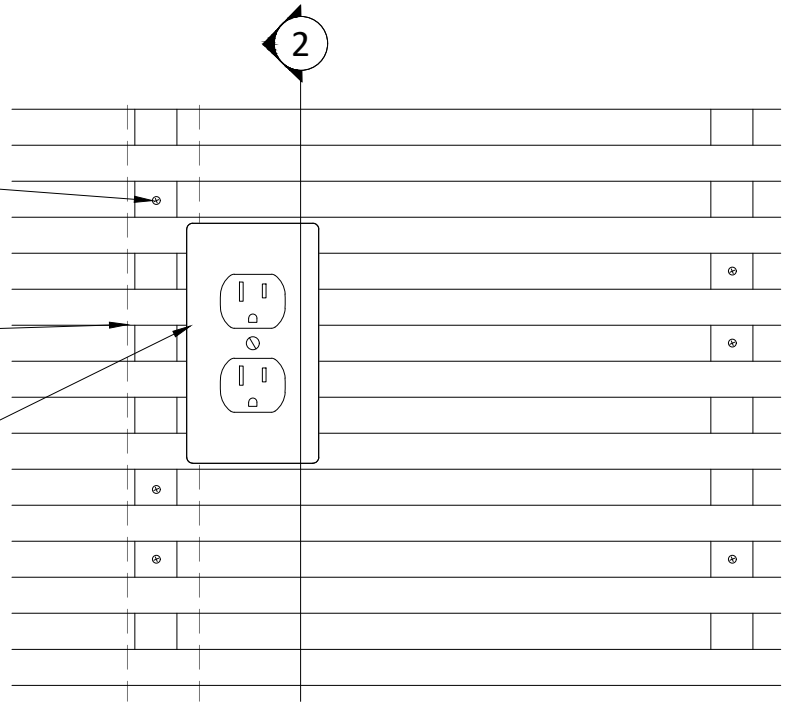


2 HORIZONTAL WALL SECTION @ BASEBOARD
3" = 1'-0"

BLACK BACKER SCREWED TO FURRING IN FIELD

FURRING (BY OTHER) TO MATCH ACOUSTICAL BACKER THICKNESS

LIGHT SWITCH PENETRATION FIELD CUT



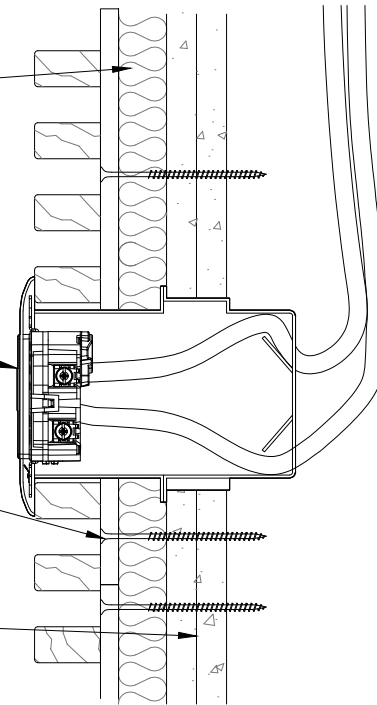
1 HORIZONTAL WALL ELEVATION @ OUTLET
3" = 1'-0"

1" ACOUSTICAL BACKER (2" AVAILABLE)

LIGHT SWITCH PENETRATION FIELD CUT

BLACK BACKER SCREWED TO FURRING IN FIELD

TYP. WALL SYSTEM (BY OTHER)



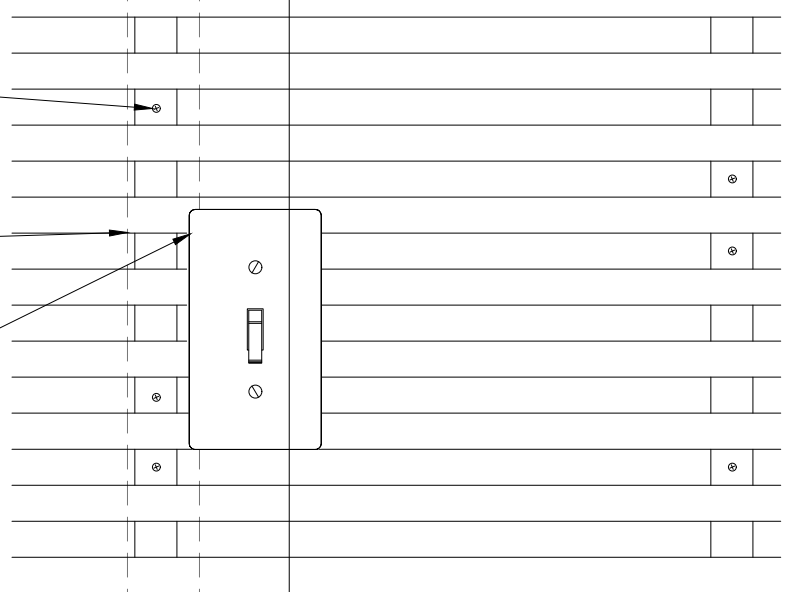
2 HORIZONTAL WALL SECTION @ OUTLET
3" = 1'-0"

2

BLACK BACKER SCREWED TO FURRING IN FIELD

FURRING (BY OTHER) TO MATCH ACOUSTICAL BACKER THICKNESS

LIGHT SWITCH PENETRATION FIELD CUT



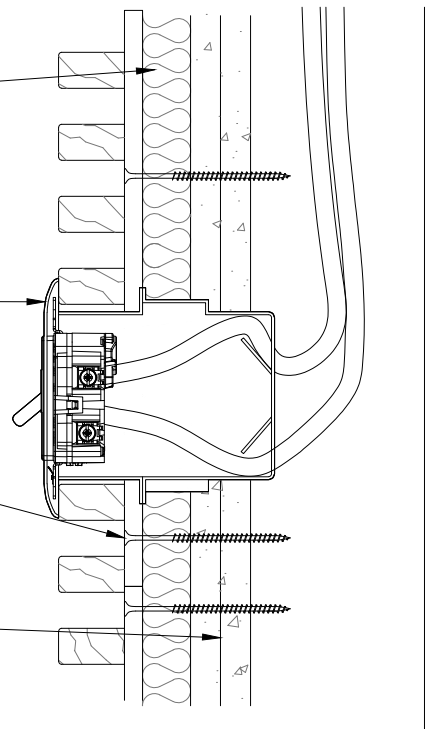
1 HORIZONTAL WALL ELEVATION @ LIGHT SWITCH
3" = 1'-0"

1" ACOUSTICAL BACKER (2" AVAILABLE)

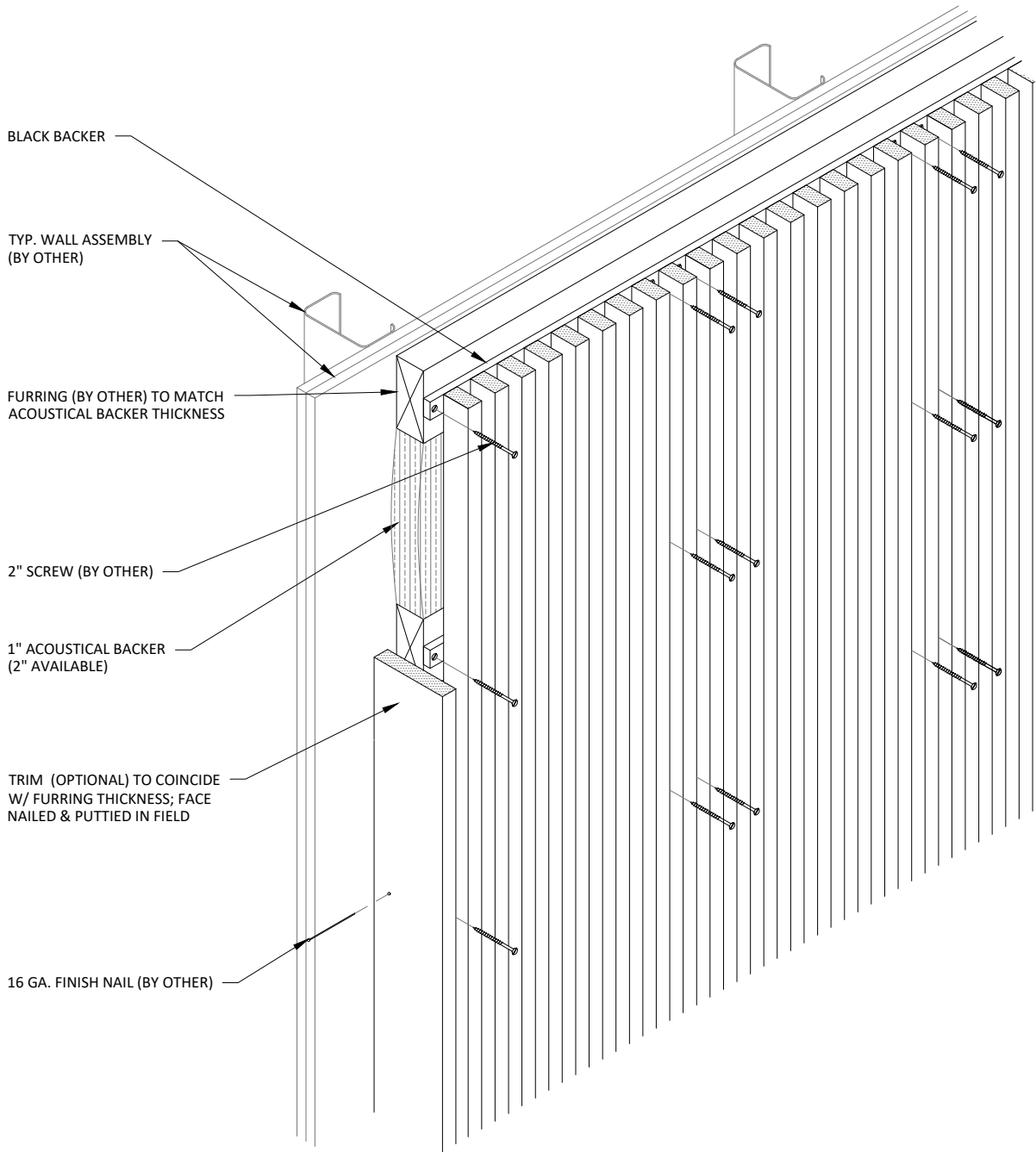
LIGHT SWITCH PENETRATION FIELD CUT

BLACK BACKER SCREWED TO FURRING IN FIELD

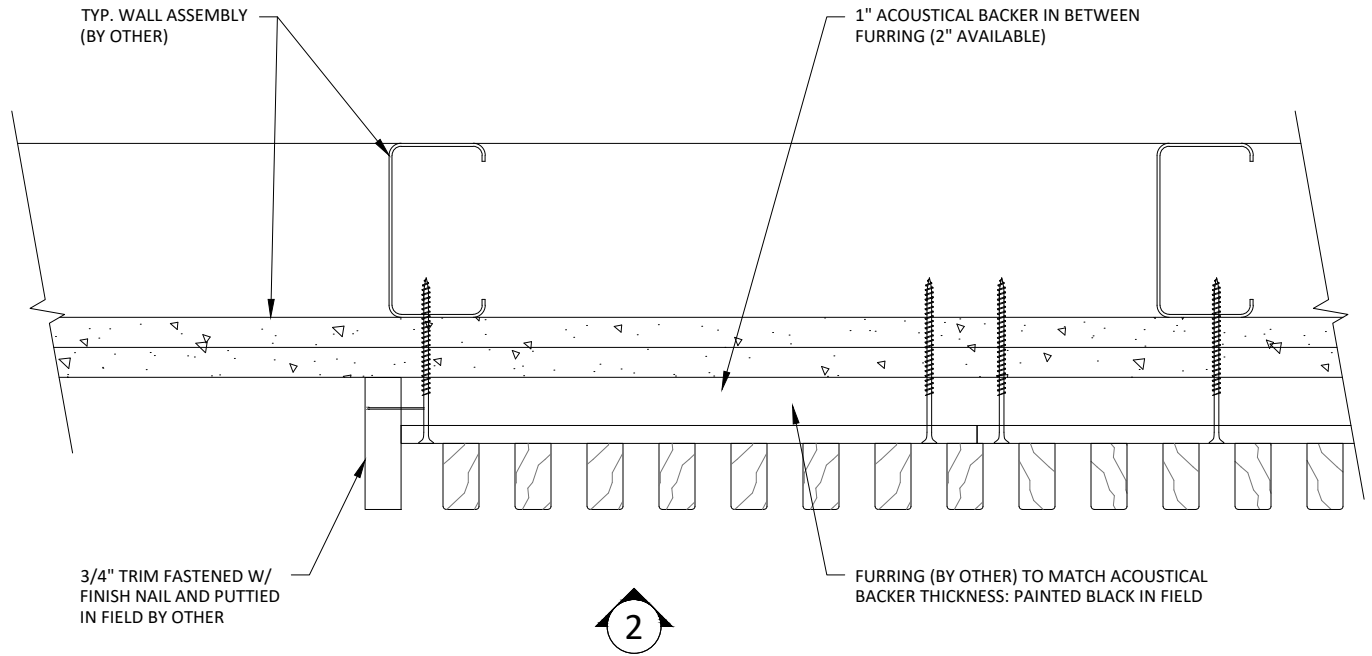
TYP. WALL SYSTEM (BY OTHER)



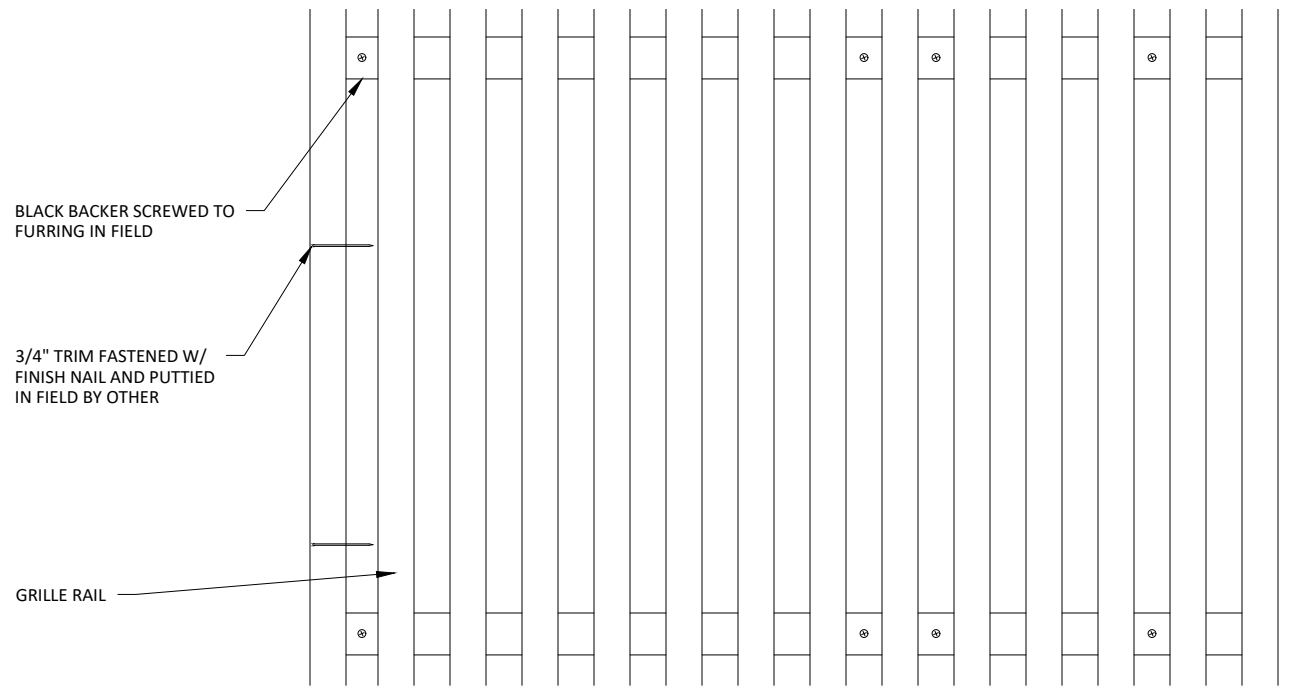
2 HORIZONTAL WALL SECTION @ LIGHT SWITCH
3" = 1'-0"



1 VERTICAL WALL ISOMETRIC - TYP.
 1 1/2" = 1'-0"



1 VERTICAL WALL PLAN @ TRIM
3" = 1'-0"



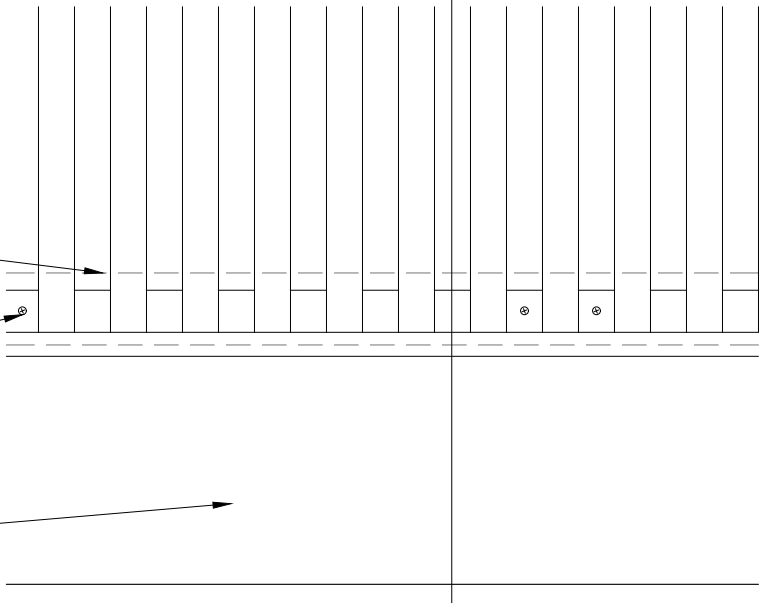
2 VERTICAL WALL ELEVATION @ TRIM
3" = 1'-0"

2

FURRING (BY OTHER) TO MATCH ACOUSTICAL BACKER THICKNESS

BLACK BACKER SCREWED TO FURRING IN FIELD

BASE AS SCHEDULED (BY OTHER)



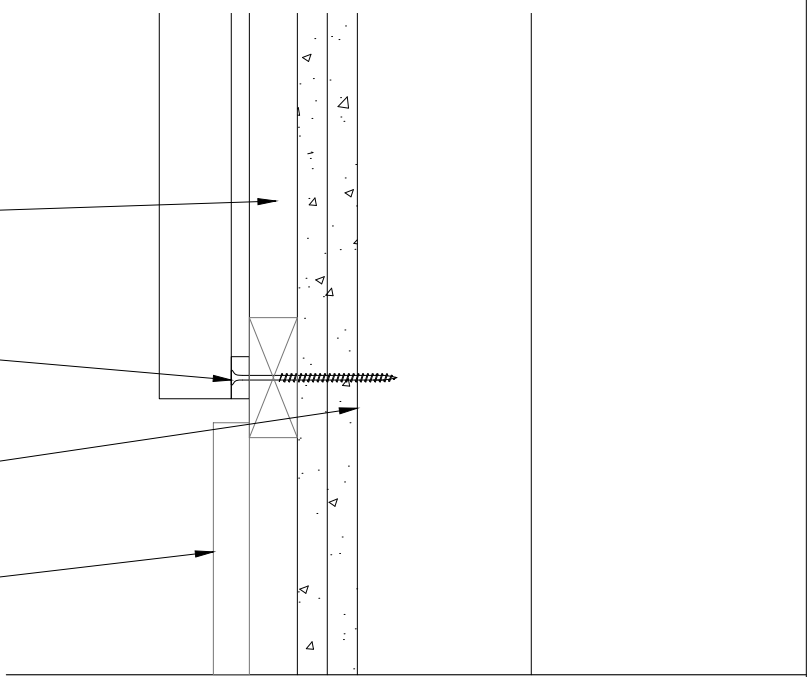
1 VERTICAL WALL ELEVATION @ BASEBOARD
3" = 1'-0"

1" ACOUSTICAL BACKER (2" AVAILABLE)

BLACK BACKER SCREWED TO FURRING IN FIELD

TYP. WALL SYSTEM (BY OTHER)

BASE AS SCHEDULED (BY OTHER)

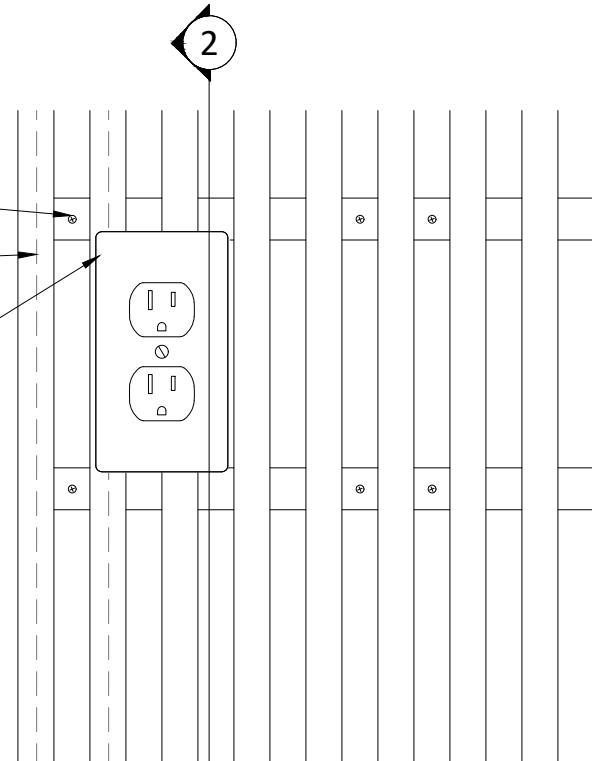


2 VERTICAL WALL SECTION @ BASEBOARD
3" = 1'-0"

BLACK BACKER SCREWED TO FURRING IN FIELD

FURRING (BY OTHER) TO MATCH ACOUSTICAL BACKER THICKNESS

LIGHT SWITCH PENETRATION FIELD CUT



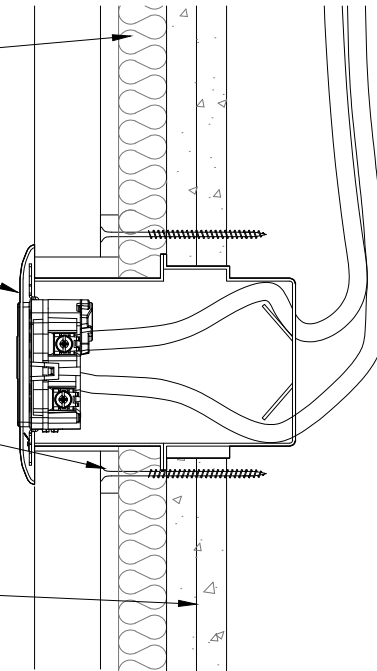
1 VERTICAL WALL ELEVATION @ OUTLET
3" = 1'-0"

1" ACOUSTICAL BACKER (2" AVAILABLE)

LIGHT SWITCH PENETRATION FIELD CUT

BLACK BACKER SCREWED TO FURRING IN FIELD

TYP. WALL SYSTEM (BY OTHER)



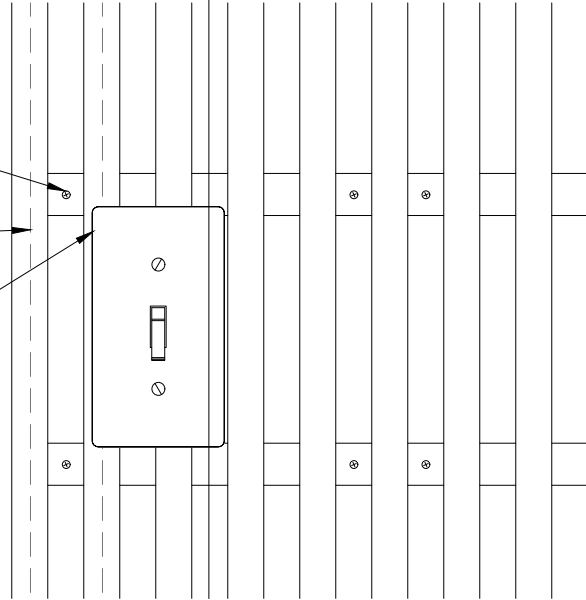
2 VERTICAL WALL SECTION @ OUTLET
3" = 1'-0"

2

BLACK BACKER SCREWED TO FURRING IN FIELD

FURRING (BY OTHER) TO MATCH ACOUSTICAL BACKER THICKNESS

LIGHT SWITCH PENETRATION FIELD CUT



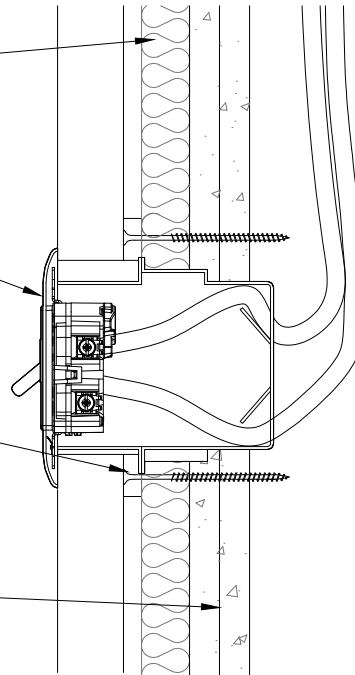
1 VERTICAL WALL ELEVATION @ LIGHT SWITCH
3" = 1'-0"

1" ACOUSTICAL BACKER (2" AVAILABLE)

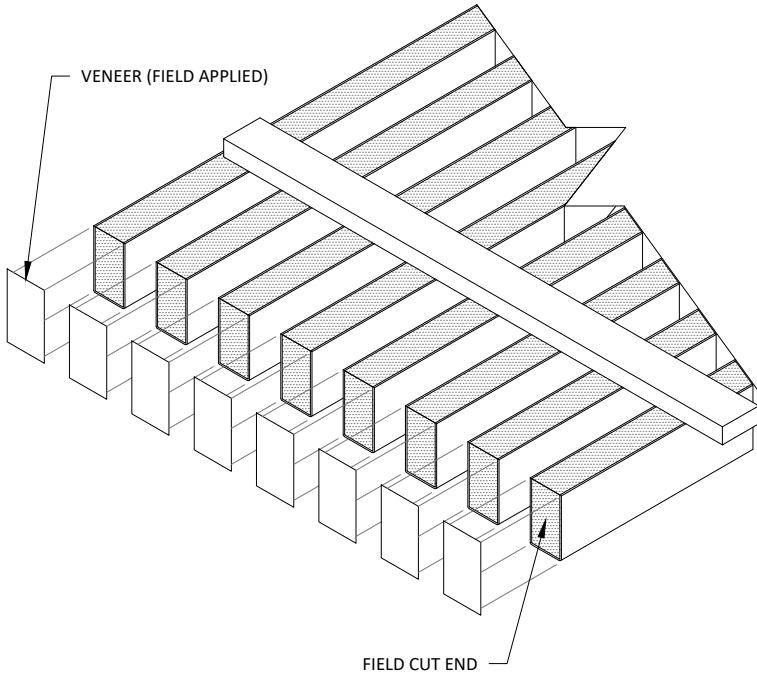
LIGHT SWITCH PENETRATION FIELD CUT

BLACK BACKER SCREWED TO FURRING IN FIELD

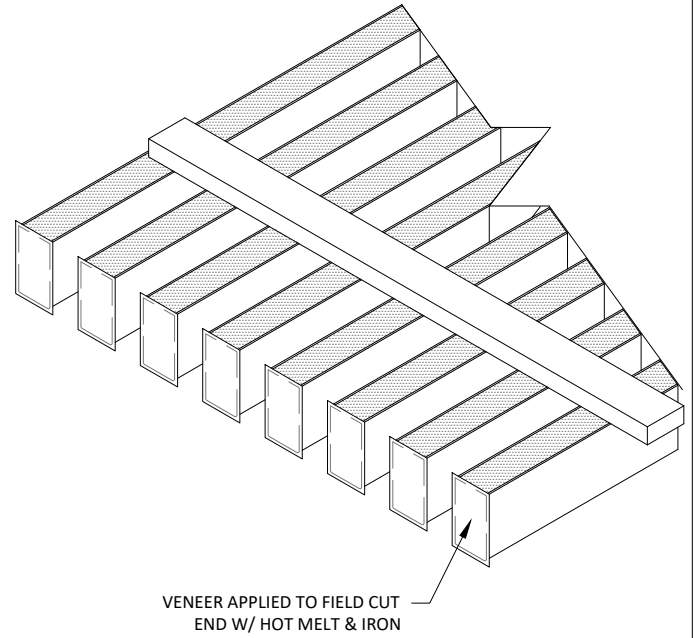
TYP. WALL SYSTEM (BY OTHER)



2 VERTICAL WALL SECTION @ LIGHT SWITCH
3" = 1'-0"

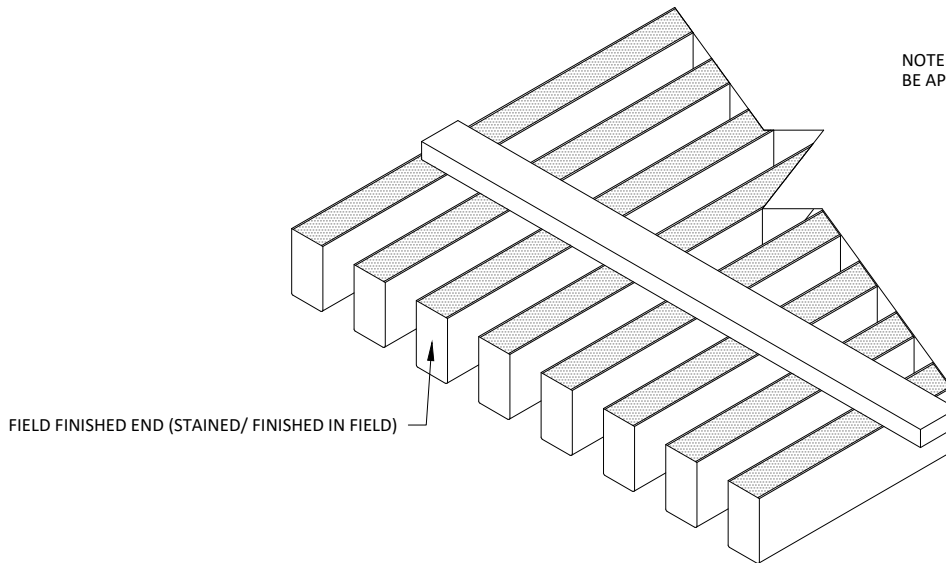


1 STEP 1
3" = 1'-0"



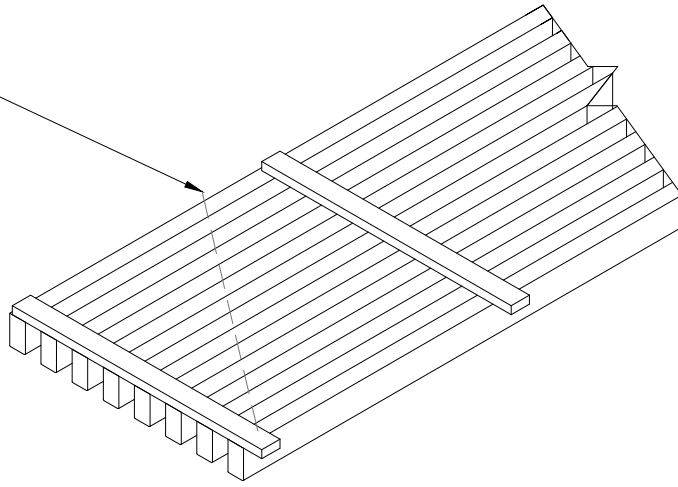
2 STEP 2
3" = 1'-0"

NOTE: FOR SOLID WOOD RAILS, NO VENEER NEEDS TO BE APPLIED - INSTEAD, REFINISH THE CUT END IN FIELD



3 STEP 3
3" = 1'-0"

DESIRED FIELD CUT ANGLE

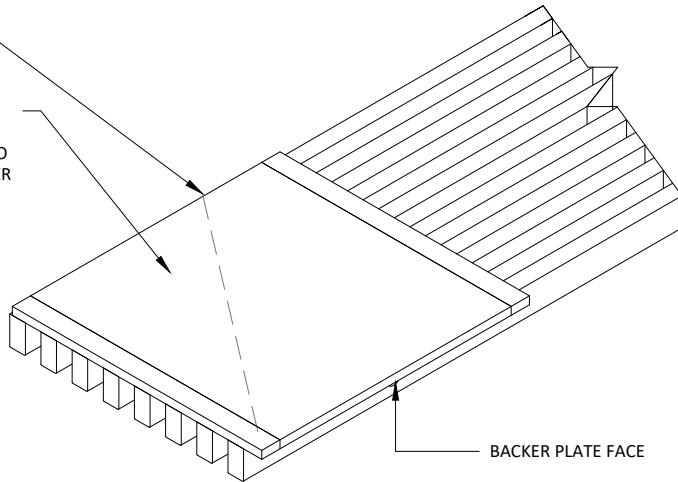


1 ANGLE-CUTTING STEP 1

1 1/2" = 1'-0"

DESIRED FIELD CUT ANGLE

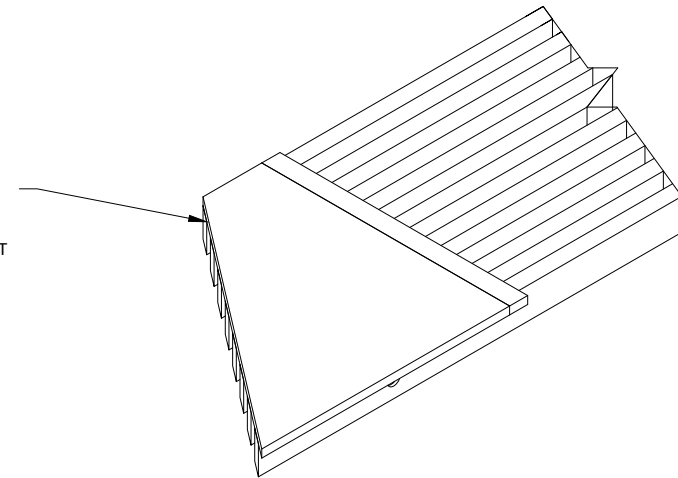
STAPLE 3/8" THICK PLYWOOD BACKER PLATE (BY OTHER) TO GRILLE RAILS. BACKER PLATE IS TO BE PAINTED BLACK ON FACE.



2 ANGLE-CUTTING STEP 2

1 1/2" = 1'-0"

ONCE BACKER PLATE IS FASTENED TO GRILLE PANEL, CUT DESIRED LINE AND FINISH ENDS AS SHOWN IN THE FIELD FINISHED END INSTRUCTIONS IN THIS STANDARD DETAIL SET



3 ANGLE-CUTTING STEP 3

1 1/2" = 1'-0"