

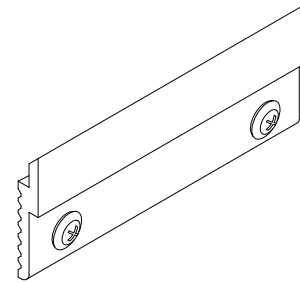
Z-CLIP (FIELD ATTACHED
TO BACK OF PANEL)

Z-BAR (FIELD ATTACHED
TO FRAMING)

CLASS A FR MDF OR
PARTICLE BOARD CORE*

TYP. WALL ASSEMBLY
(BY OTHER)

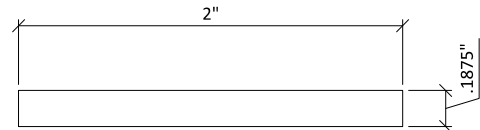
2" X $\frac{3}{16}$ " BLACK WALL
SPLINE (FIELD ATTACHED)



2 Z-CLIP DETAIL
6" = 1'-0"



3 Z-BAR & Z-CLIP PROFILE
1' = 1'-0"



4 WALL SPLINE PROFILE
1' = 1'-0"

1 TYPICAL SECTION
3" = 1'-0"

MICROPERF (WALL SYSTEM) - TYPICAL SECTION AND ACCESSORY DETAILS

SCALE: AS NOTED

LAST REVISED: 6/29/2020

SHEET NUMBER

1

DRAWN BY: BH

2" X $\frac{3}{16}$ " WALL SPLINE (PAINTED BLACK)

TYP. WALL ASSEMBLY (BY OTHER)

Z-BAR (FIELD ATTACHED TO FRAMING)

TRIM (OPTIONAL) TO COINCIDE
W/ FRAMING THICKNESS; FACE
NAILED & PUTTIED IN FIELD

16 GA. FINISH NAIL (BY OTHER)

1

WALL SYSTEM ISOMETRIC

1 1/2" = 1'-0"

MICROPERF (WALL SYSTEM) - ISOMETRIC

SCALE: AS NOTED

LAST REVISED: 6/29/2020

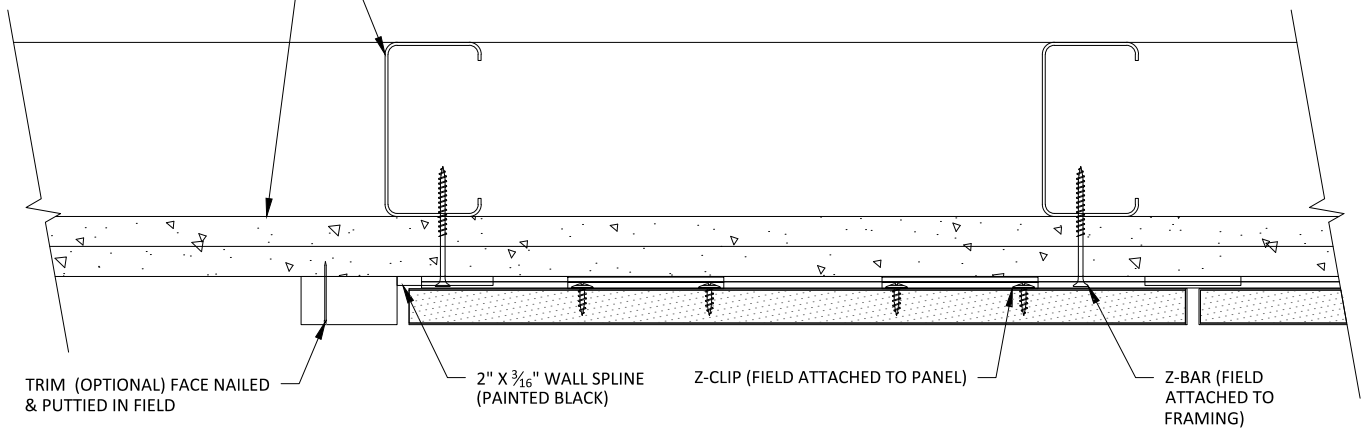
DO NOT SCALE DRAWING. FIGURED DIMENSIONS ARE TO BE FOLLOWED. READ THIS DRAWING IN CONNECTION WITH GENERAL ARCHITECTURAL PLANS, STRUCTURAL PLANS, AND OTHER RELATED DRAWINGS. THESE DRAWINGS REPRESENT ASI'S UNDERSTANDING AND INTERPRETATION OF THE ARCHITECTURAL DRAWINGS AND HOW ASI PRODUCTS RELATE TO THE PROJECT. COPYRIGHT ASI © 2020

SHEET NUMBER

2

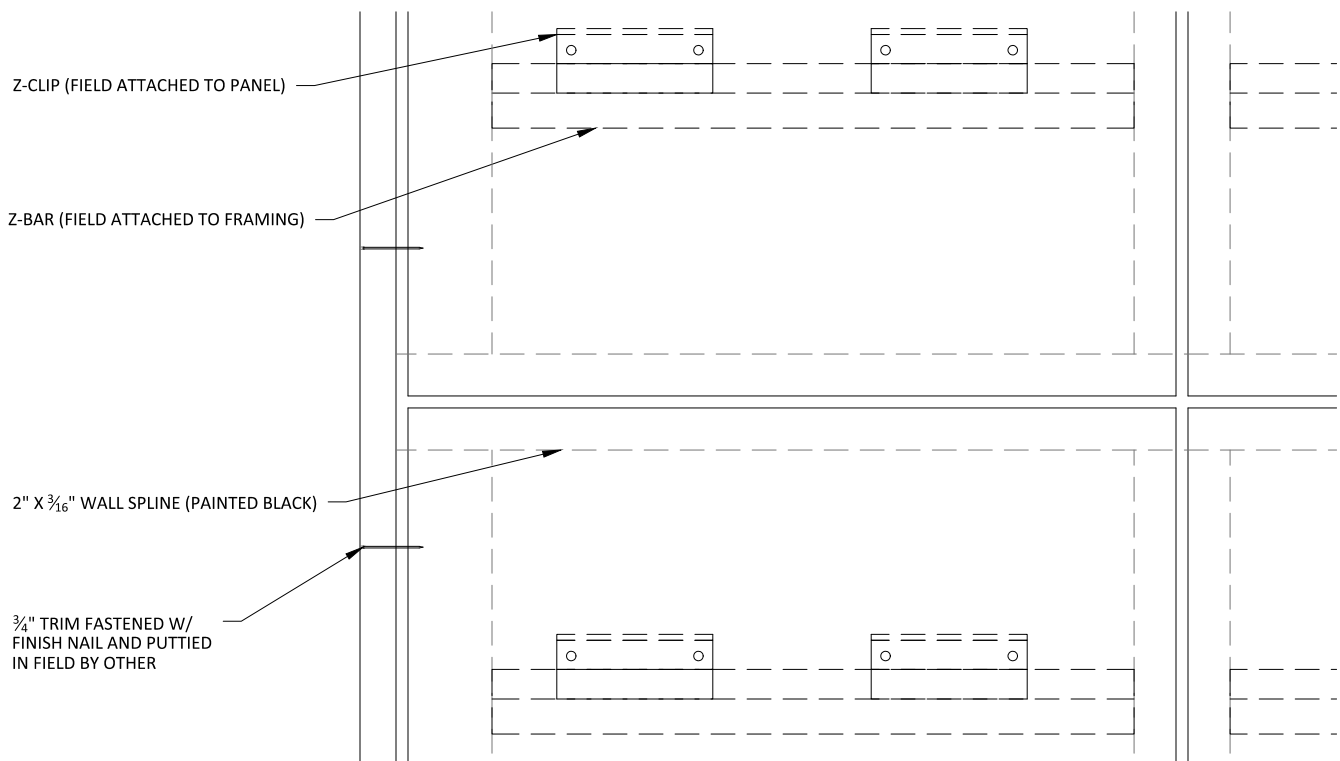
DRAWN BY: BH

TYP. WALL ASSEMBLY (BY OTHER)



2

1 TRIM CONDITION PLAN 3" = 1'-0"



2 TRIM CONDITION ELEVATION 3" = 1'-0"

Z-BAR (FIELD ATTACHED TO FRAMING)

Z-CLIP (FIELD ATTACHED TO PANEL)

TYP. WALL ASSEMBLY (BY OTHER)

2" X $\frac{3}{16}$ " WALL SPLINE (PAINTED BLACK)

1 OUTSIDE CORNER DETAIL

3" = 1'-0"

2" X $\frac{3}{16}$ " WALL SPLINE (PAINTED BLACK)

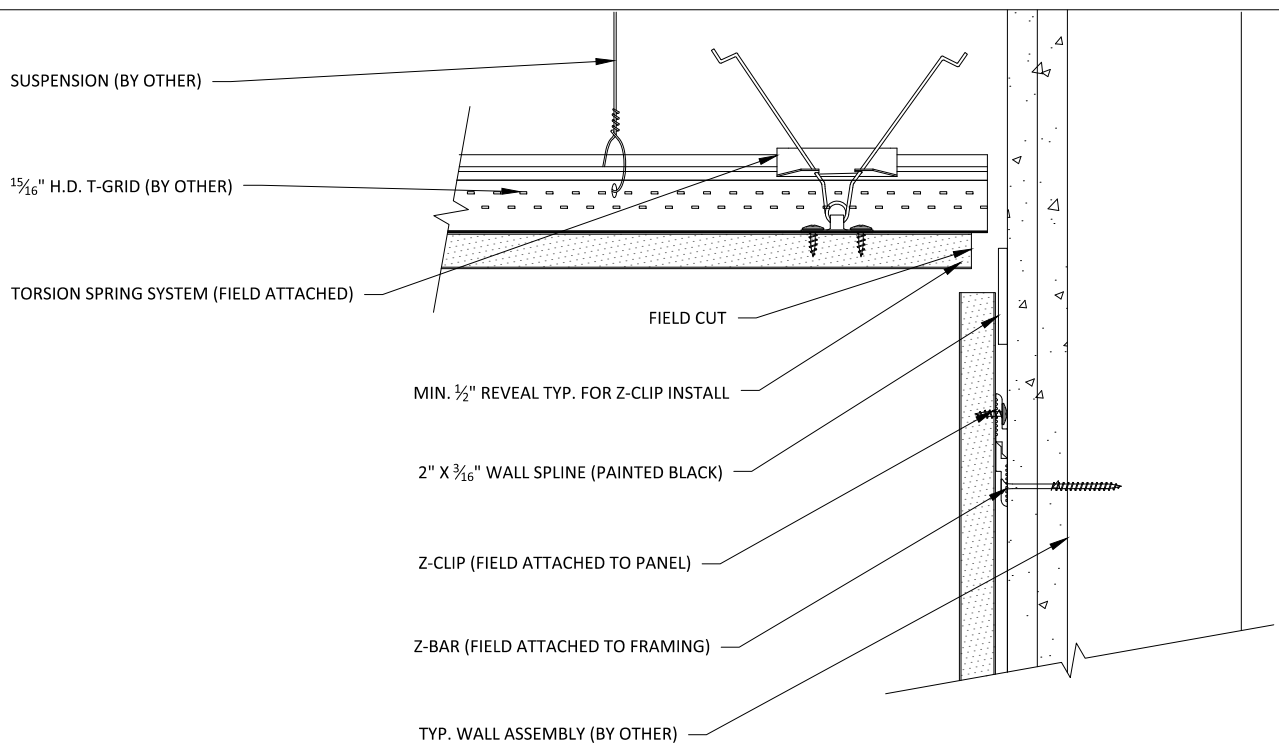
Z-BAR (FIELD ATTACHED TO FRAMING)

TYP. WALL ASSEMBLY (BY OTHER)

Z-CLIP (FIELD ATTACHED TO PANEL)

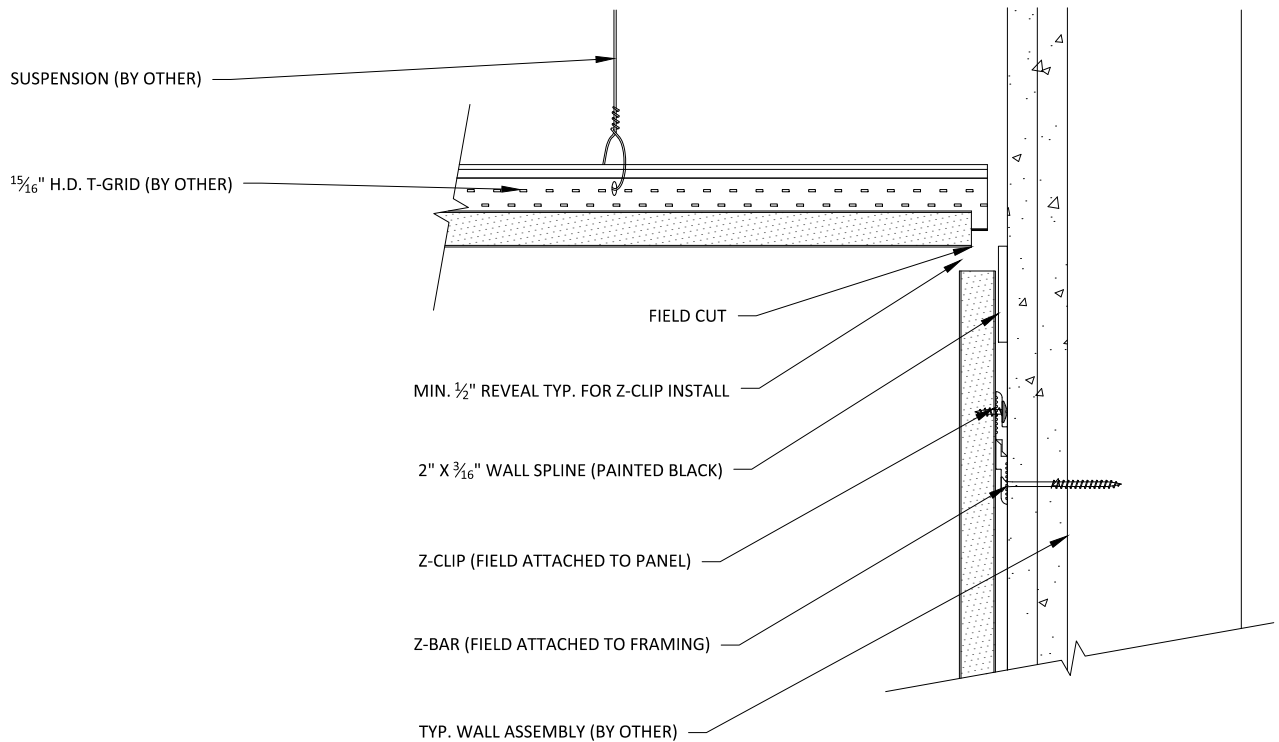
2 INSIDE CORNER DETAIL

3" = 1'-0"



1 WALL-TO-TORSION SPRING CEILING DETAIL

3" = 1'-0"



2 WALL-TO-SPLINED (OR RABBETED) PANEL CEILING DETAIL

3" = 1'-0"

Z-CLIP (FIELD ATTACHED TO BACK OF PANEL)

Z-BAR (FIELD ATTACHED TO FRAMING)

2" X $\frac{3}{16}$ " WALL SPLINE (PAINTED BLACK)

BASE AS SCHEDULED (BY OTHER)

1

BASEBOARD DETAIL ELEVATION

3" = 1'-0"

Z-CLIP (FIELD ATTACHED TO BACK OF PANEL)

Z-BAR (FIELD ATTACHED TO FRAMING)

2" X $\frac{3}{16}$ " WALL SPLINE (PAINTED BLACK)

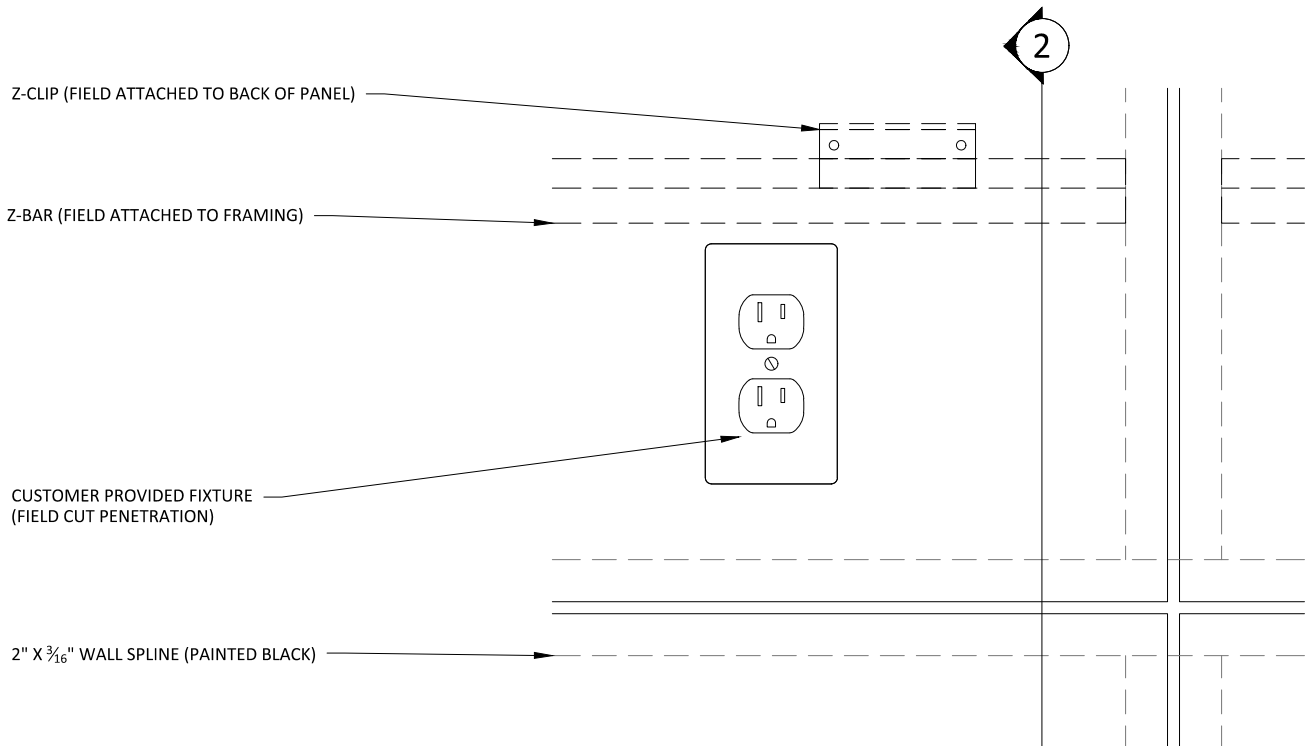
TYP. WALL ASSEMBLY (BY OTHER)

BASE AS SCHEDULED (BY OTHER)

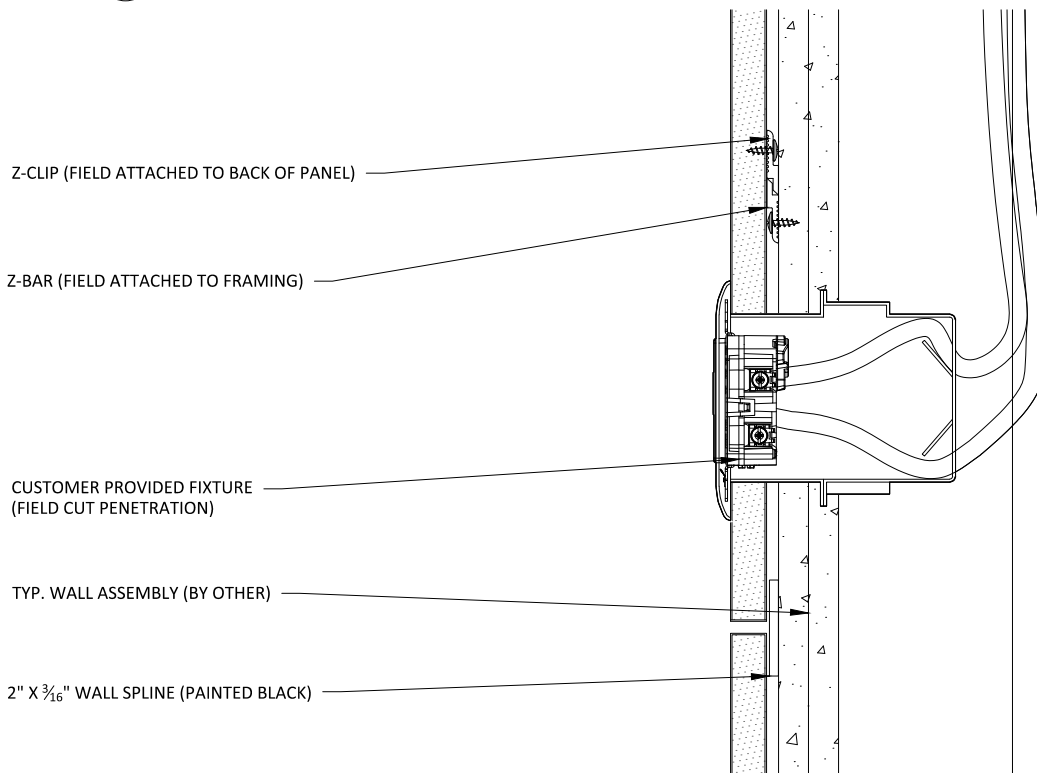
2

BASEBOARD DETAIL SECTION

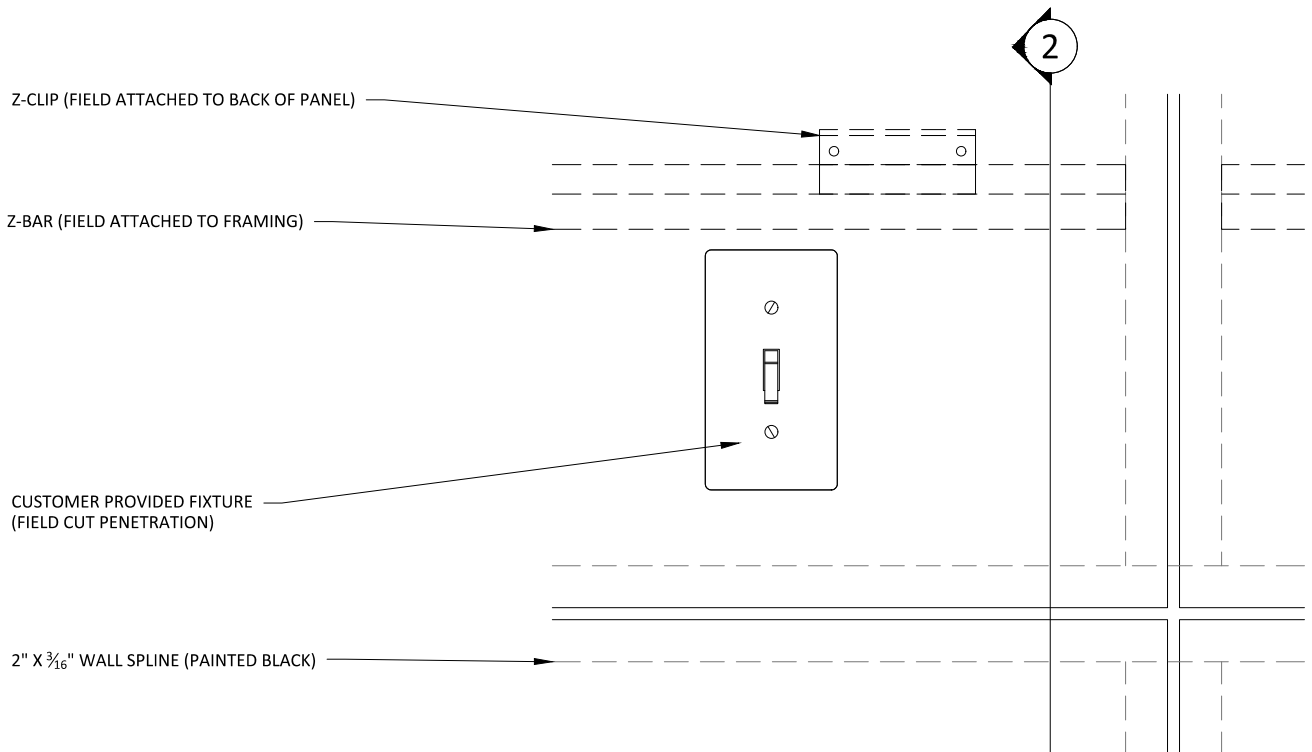
3" = 1'-0"



1 OUTLET ELEVATION
3" = 1'-0"

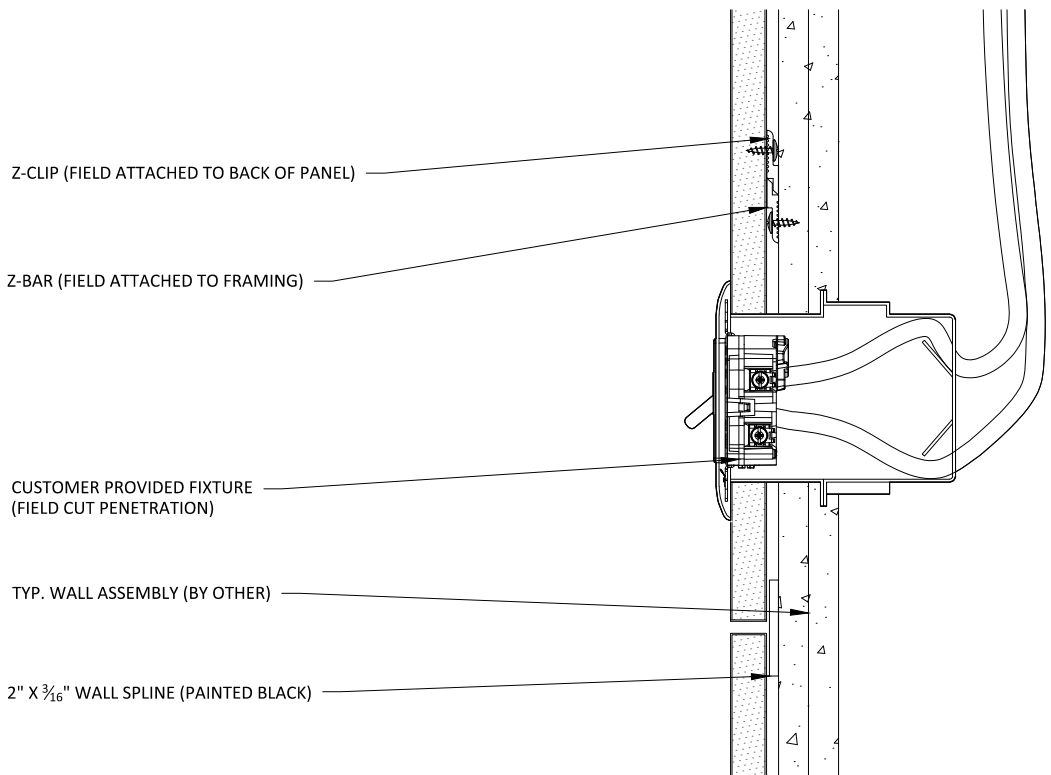


2 OUTLET SECTION
3" = 1'-0"



1 LIGHT SWITCH ELEVATION

3" = 1'-0"



2 LIGHT SWITCH SECTION

3" = 1'-0"