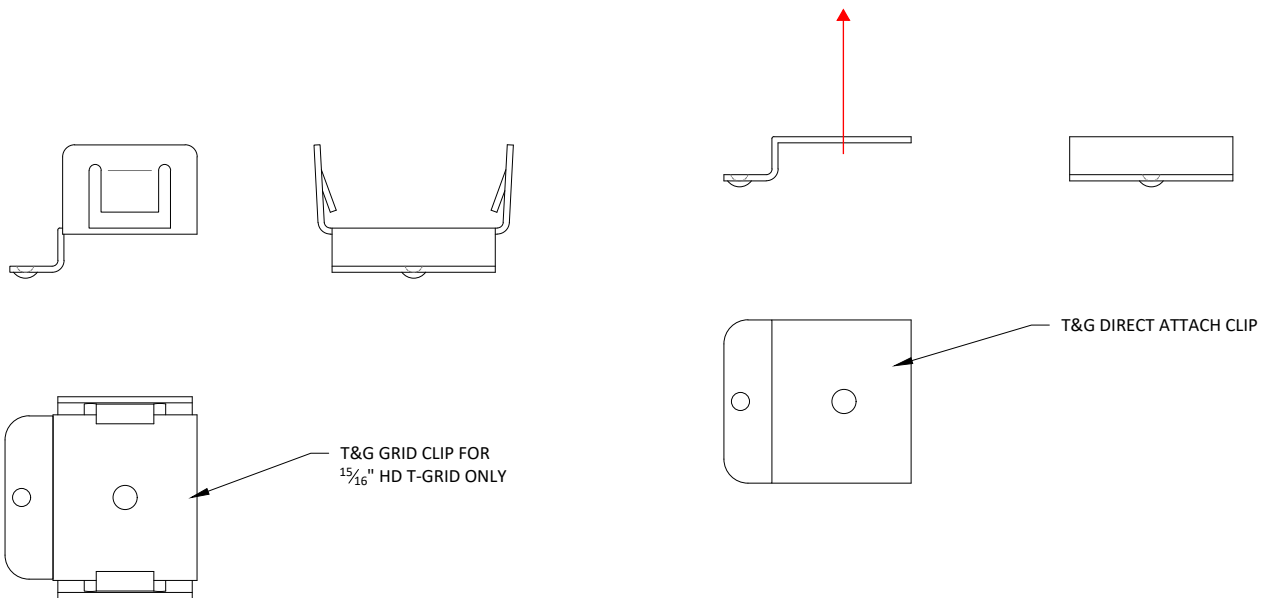
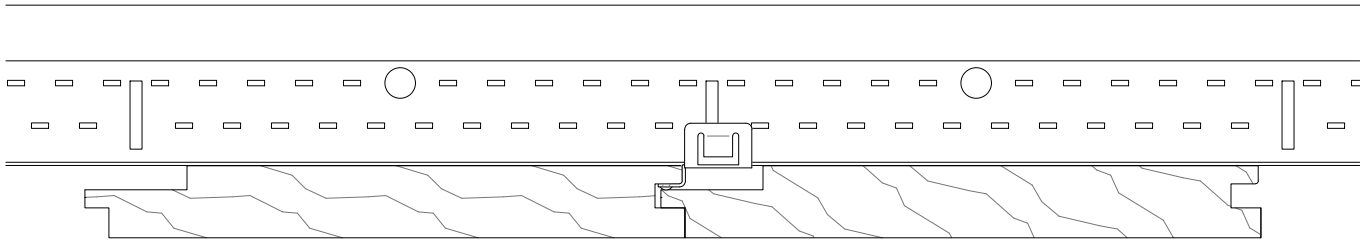


1 TYPICAL LINEAR SECTION DETAIL  
6" = 1'-0"

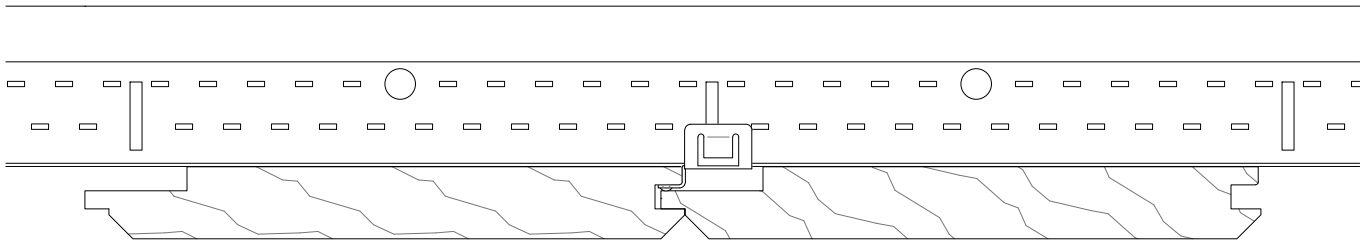


2 T&G GRID CLIP  
1' = 1'-0"

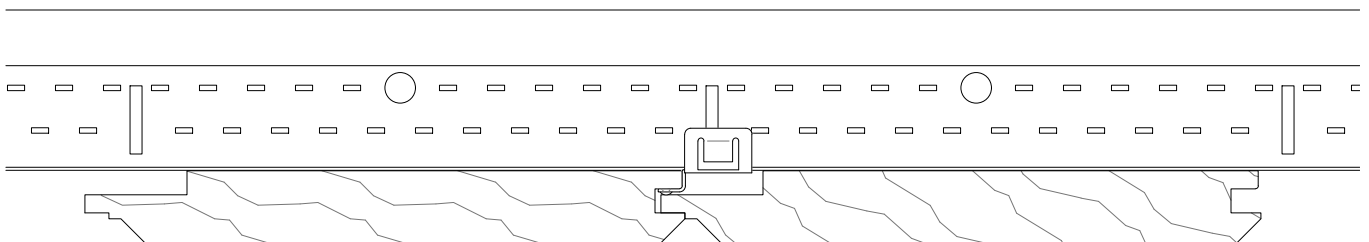
3 T&G DIRECT ATTACH CLIP  
1' = 1'-0"



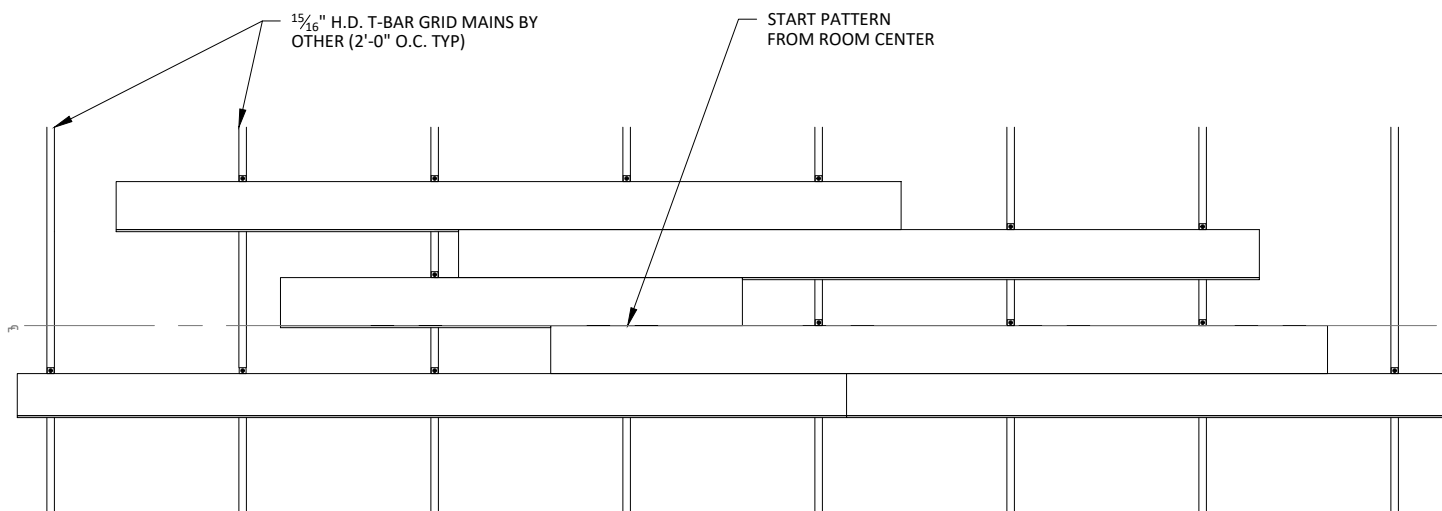
BUTT JOINT OPTION (AVAILABLE IN SOLID WOOD OR VENEER)  
STANDARD MODULE SIZES: 3", 4", AND 6"



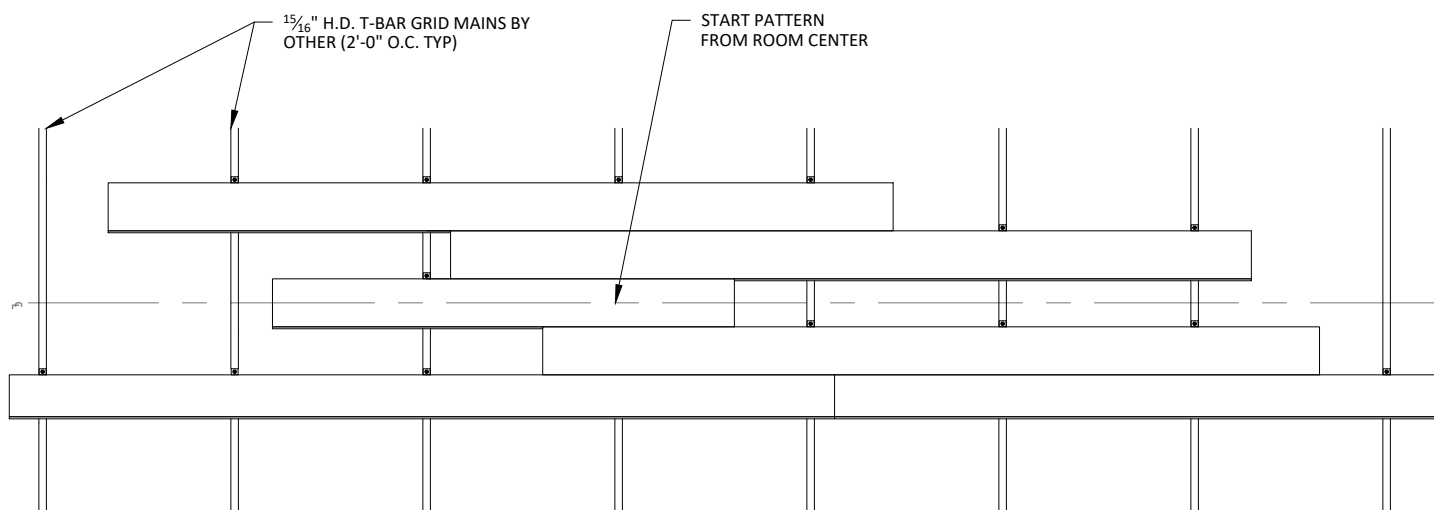
V-GROOVE JOINT OPTION (AVAILABLE IN SOLID WOOD ONLY) STANDARD  
MODULE SIZES: 3", 4", AND 6"



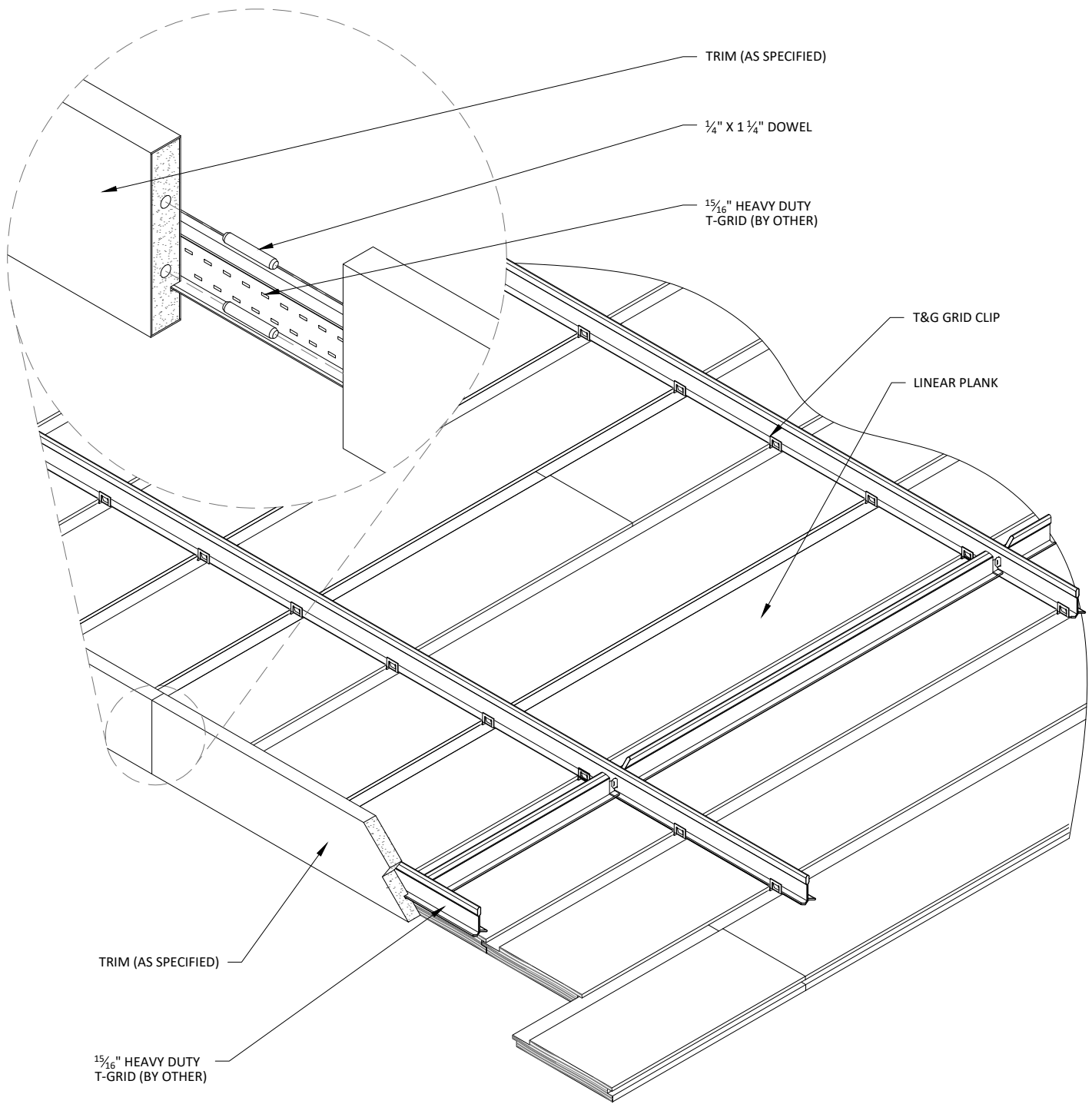
FLAT V-GROOVE JOINT OPTION (AVAILABLE IN SOLID WOOD ONLY)  
STANDARD MODULE SIZES: 3", 4", AND 6"



**1** CEILING PATTERN RCP (OPTION 1 - CENTERED ON REVEAL)  
1/2" = 1'-0"



**2** CEILING PATTERN RCP (OPTION 2 - CENTERED ON PLANK)  
1/2" = 1'-0"



**1** CEILING ISOMETRIC  
1 1/2" = 1'-0"

**LINEAR T&G CEILING SYSTEM - ISOMETRIC**

SCALE: AS NOTED

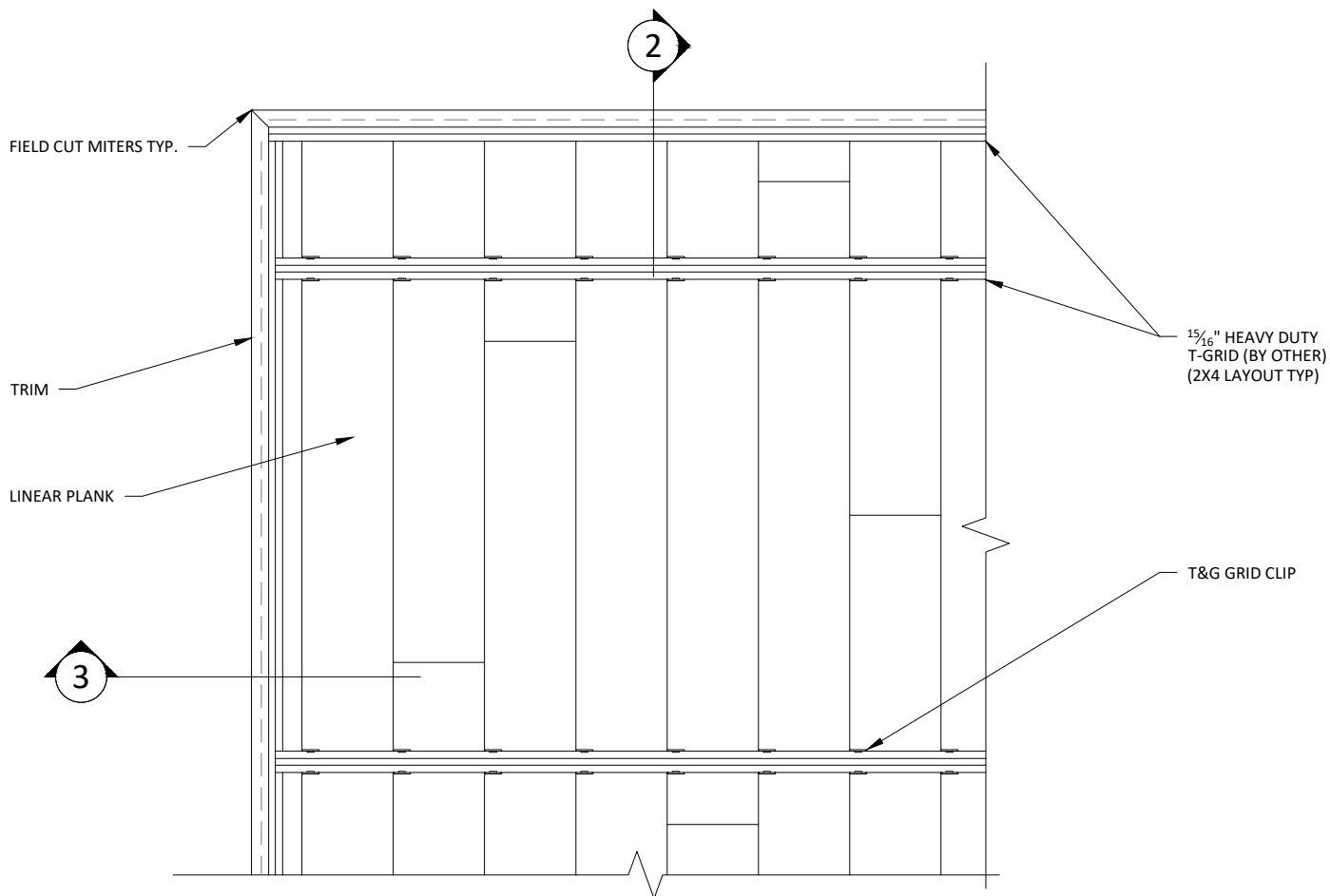
LAST REVISED: 4/14/2020

DO NOT SCALE DRAWING. FIGURED DIMENSIONS ARE TO BE FOLLOWED. READ THIS DRAWING IN CONNECTION WITH GENERAL ARCHITECTURAL PLANS, STRUCTURAL PLANS, AND OTHER RELATED DRAWINGS. THESE DRAWINGS REPRESENT ASI'S UNDERSTANDING AND INTERPRETATION OF THE ARCHITECTURAL DRAWINGS AND HOW ASI PRODUCTS RELATE TO THE PROJECT. COPYRIGHT ASI © 2020

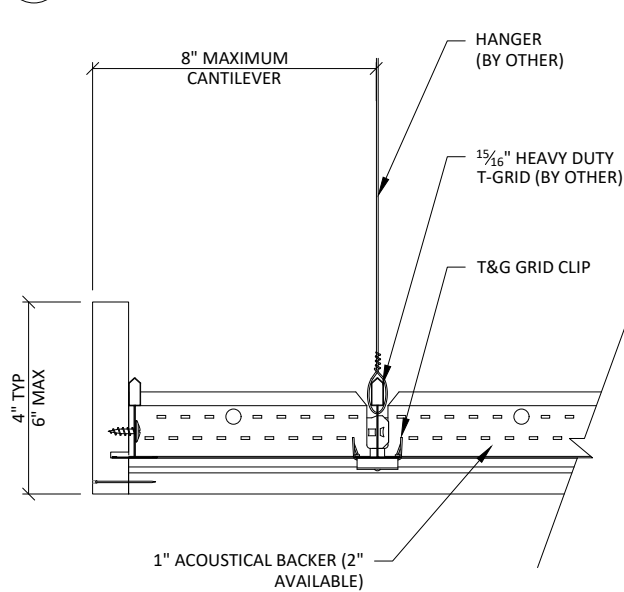
SHEET NUMBER

**4**

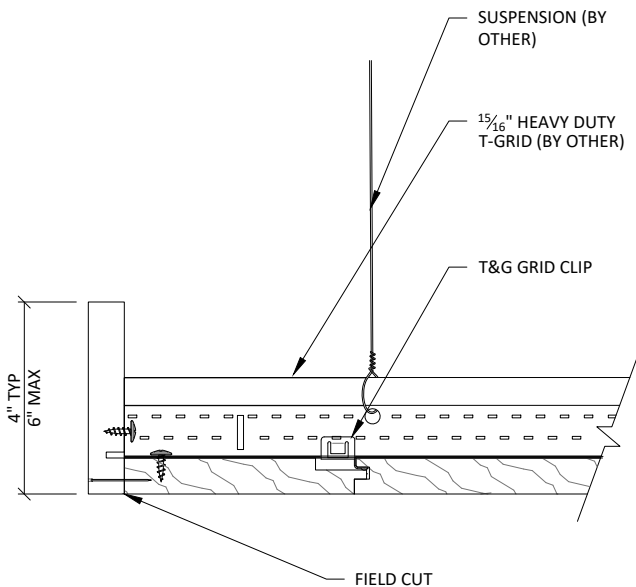
DRAWN BY: BMH



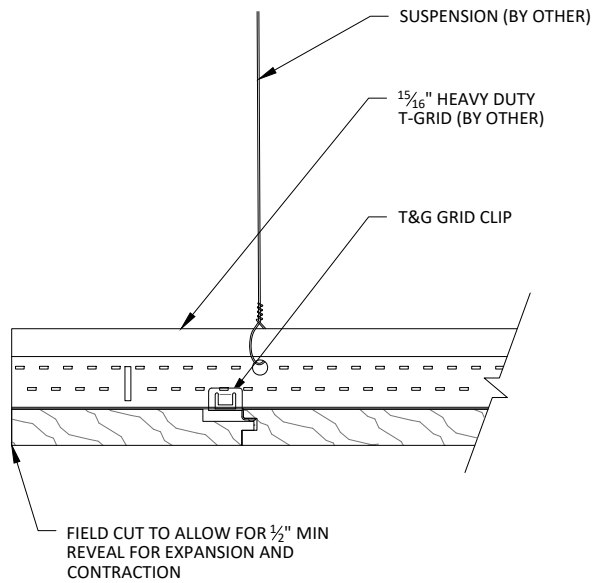
# 1 TRIM @ MITERED CORNER - PLAN 1 1/2" = 1'-0"



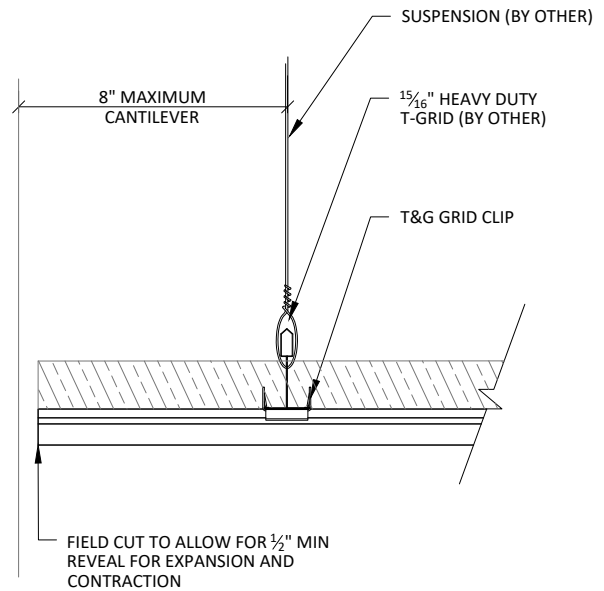
# 2 TRIM DETAIL 1 3" = 1'-0"



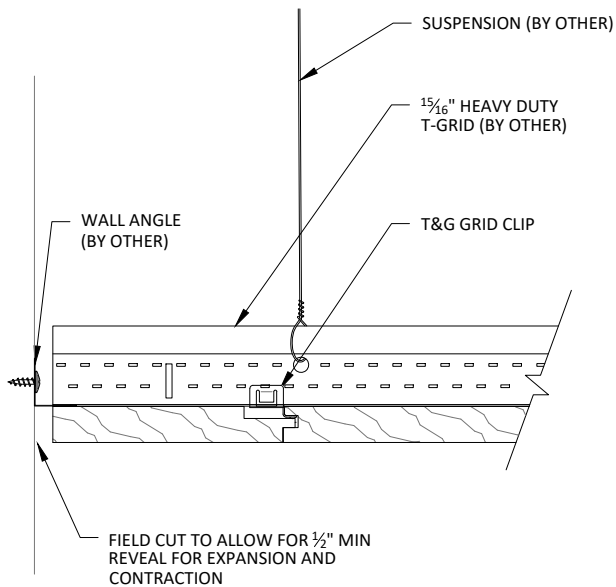
# 3 TRIM DETAIL 2 3" = 1'-0"



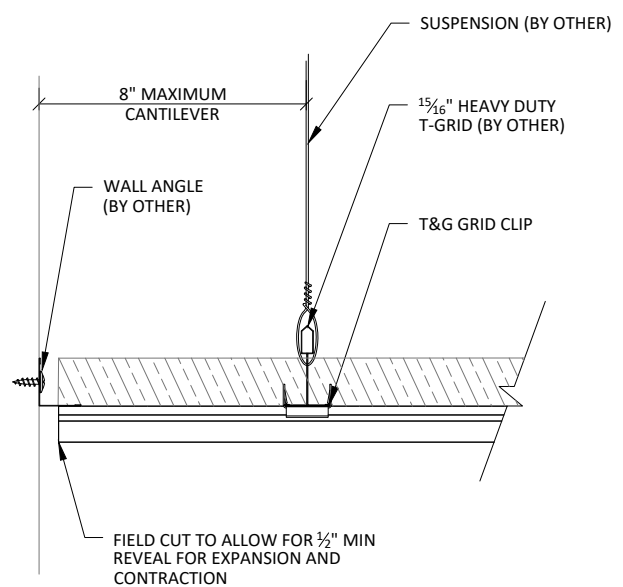
**1** EDGE DETAIL 1  
3" = 1'-0"



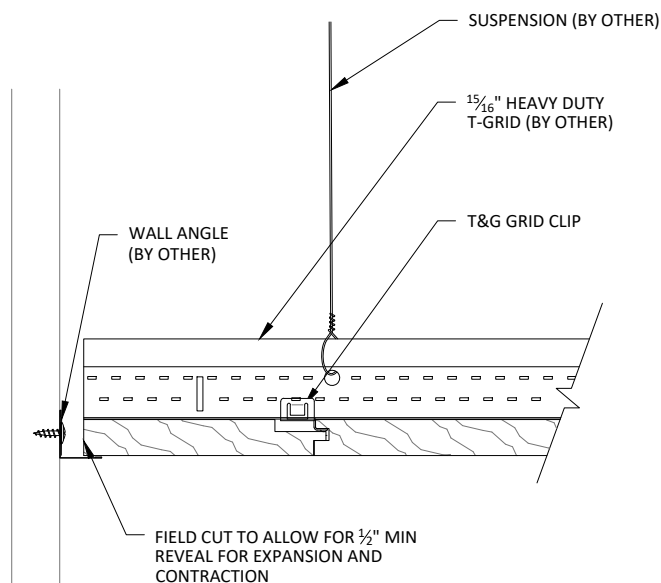
**2** EDGE DETAIL 2  
3" = 1'-0"



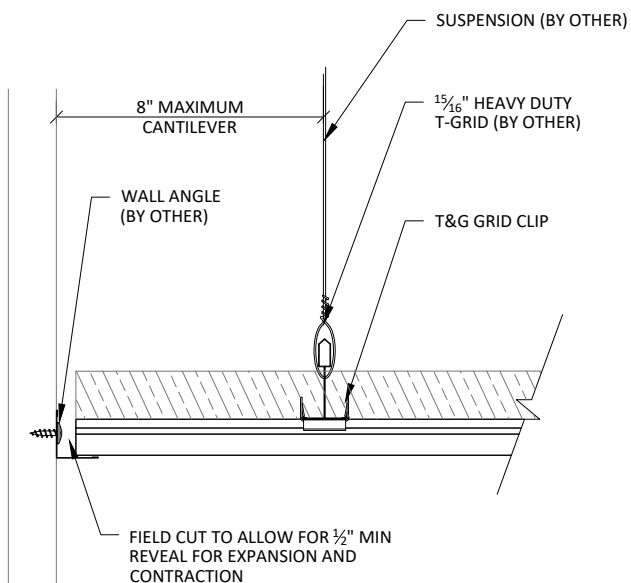
**3** EDGE DETAIL 3  
3" = 1'-0"



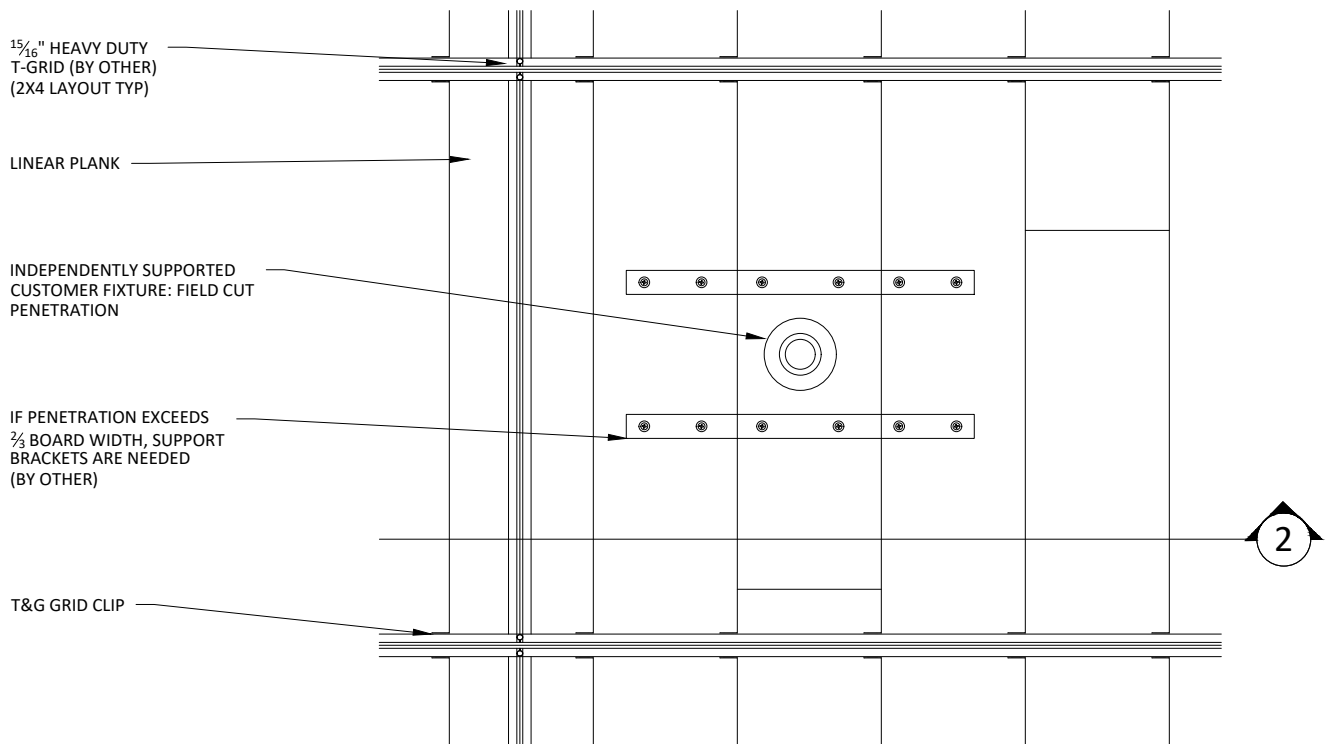
**4** EDGE DETAIL 4  
3" = 1'-0"



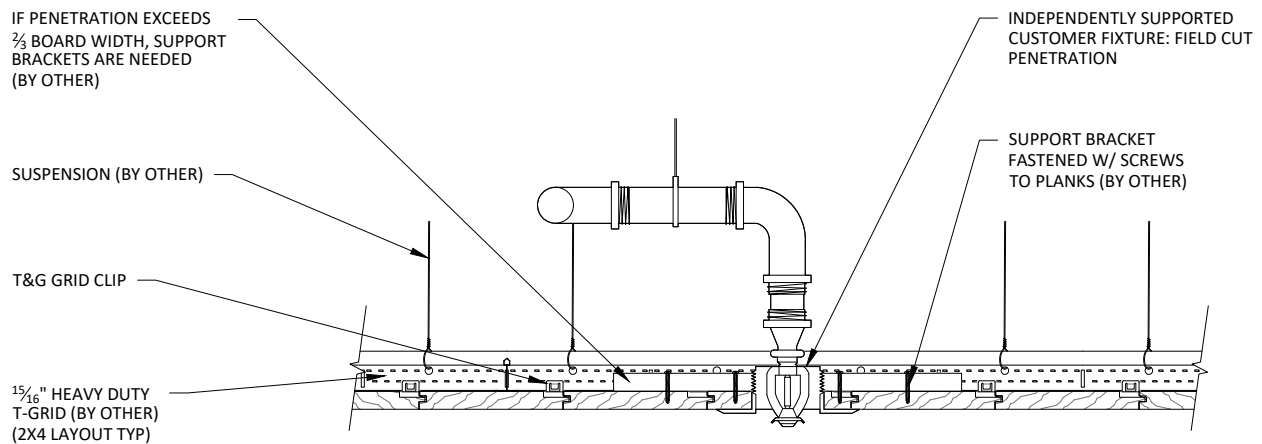
**1** EDGE DETAIL 5  
3" = 1'-0"



**2** EDGE DETAIL 6  
3" = 1'-0"



**1** SPRINKLER HEAD DETAIL - PLAN VIEW  
1 1/2" = 1'-0"



**2** SPRINKLER HEAD DETAIL - SECTION VIEW  
1 1/2" = 1'-0"



1 5/16" HEAVY DUTY  
T-GRID (BY OTHER)  
(2X4 LAYOUT TYP)

LINEAR PLANK

INDEPENDENTLY SUPPORTED  
CUSTOMER FIXTURE: FIELD CUT  
PENETRATION

IF PENETRATION EXCEEDS  
2/3 BOARD WIDTH, SUPPORT  
BRACKETS ARE NEEDED  
(BY OTHER)

T&G GRID CLIP

2

## 1 CAN LIGHT DETAIL - PLAN VIEW

1 1/2" = 1'-0"

IF PENETRATION EXCEEDS  
2/3 BOARD WIDTH, SUPPORT  
BRACKETS ARE NEEDED  
(BY OTHER)

SUSPENSION (BY OTHER)

T&G GRID CLIP

1 5/16" HEAVY DUTY  
T-GRID (BY OTHER)  
(2X4 LAYOUT TYP)

INDEPENDENTLY SUPPORTED  
CUSTOMER FIXTURE: FIELD CUT  
PENETRATION

SUPPORT BRACKET  
FASTENED W/ SCREWS  
TO PLANKS (BY OTHER)

## 2 CAN LIGHT DETAIL - SECTION VIEW

1 1/2" = 1'-0"

# LINEAR T&G CEILING SYSTEM - CAN LIGHT DETAIL

SHEET NUMBER

9

SCALE: AS NOTED

LAST REVISED: 4/14/2020

DRAWN BY: BMH

DO NOT SCALE DRAWING. FIGURED DIMENSIONS ARE TO BE FOLLOWED. READ THIS DRAWING IN CONNECTION WITH GENERAL ARCHITECTURAL PLANS, STRUCTURAL PLANS, AND OTHER RELATED DRAWINGS. THESE DRAWINGS REPRESENT ASI'S UNDERSTANDING AND INTERPRETATION OF THE ARCHITECTURAL DRAWINGS AND HOW ASI PRODUCTS RELATE TO THE PROJECT. COPYRIGHT ASI © 2020

1 5/16" HEAVY DUTY  
T-GRID (BY OTHER)  
(2X4 LAYOUT TYP)

LINEAR PLANK

INDEPENDENTLY SUPPORTED  
CUSTOMER FIXTURE: FIELD CUT  
PENETRATION

IF PENETRATION EXCEEDS  
2/3 BOARD WIDTH, SUPPORT  
BRACKETS ARE NEEDED  
(BY OTHER)

T&G GRID CLIP

2

1

## PENDANT LIGHT DETAIL - PLAN VIEW

1 1/2" = 1'-0"

IF PENETRATION EXCEEDS  
2/3 BOARD WIDTH, SUPPORT  
BRACKETS ARE NEEDED  
(BY OTHER)

SUSPENSION (BY OTHER)

T&G GRID CLIP

1 5/16" HEAVY DUTY  
T-GRID (BY OTHER)  
(2X4 LAYOUT TYP)

INDEPENDENTLY SUPPORTED  
CUSTOMER FIXTURE: FIELD CUT  
PENETRATION

SUPPORT BRACKET  
FASTENED W/ SCREWS  
TO PLANKS (BY OTHER)

2

## PENDANT LIGHT DETAIL - SECTION DETAIL

1 1/2" = 1'-0"

# LINEAR T&G CEILING SYSTEM - PENDANT LIGHT DETAIL

SHEET NUMBER

10

SCALE: AS NOTED

LAST REVISED: 4/14/2020

DRAWN BY: BMH

DO NOT SCALE DRAWING. FIGURED DIMENSIONS ARE TO BE FOLLOWED. READ THIS DRAWING IN CONNECTION WITH GENERAL ARCHITECTURAL PLANS, STRUCTURAL PLANS, AND OTHER RELATED DRAWINGS. THESE DRAWINGS REPRESENT ASI'S UNDERSTANDING AND INTERPRETATION OF THE ARCHITECTURAL DRAWINGS AND HOW ASI PRODUCTS RELATE TO THE PROJECT. COPYRIGHT ASI © 2020

15/16" HEAVY DUTY  
T-GRID (BY OTHER)  
(2X4 LAYOUT TYP)

LINEAR PLANK

INDEPENDENTLY SUPPORTED  
CUSTOMER FIXTURE: FIELD CUT  
PENETRATION

IF PENETRATION EXCEEDS  
2/3 BOARD WIDTH, SUPPORT  
BRACKETS ARE NEEDED  
(BY OTHER)

T&G GRID CLIP

2

1

## RECESSED SPEAKER DETAIL - PLAN VIEW

1 1/2" = 1'-0"

IF PENETRATION EXCEEDS  
2/3 BOARD WIDTH, SUPPORT  
BRACKETS ARE NEEDED  
(BY OTHER)

SUSPENSION (BY OTHER)

T&G GRID CLIP

15/16" HEAVY DUTY  
T-GRID (BY OTHER)  
(2X4 LAYOUT TYP)

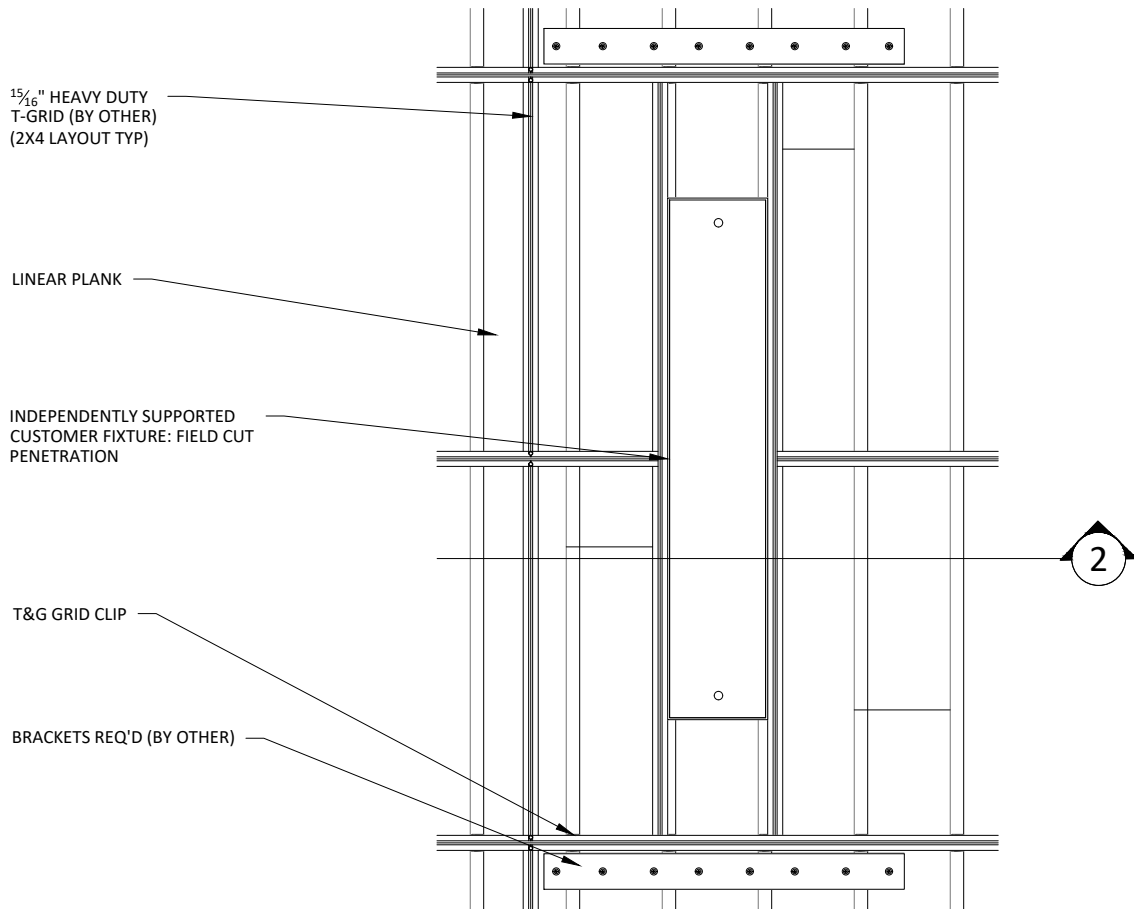
INDEPENDENTLY SUPPORTED  
CUSTOMER FIXTURE: FIELD CUT  
PENETRATION

SUPPORT BRACKET  
FASTENED W/ SCREWS  
TO PLANKS (BY OTHER)

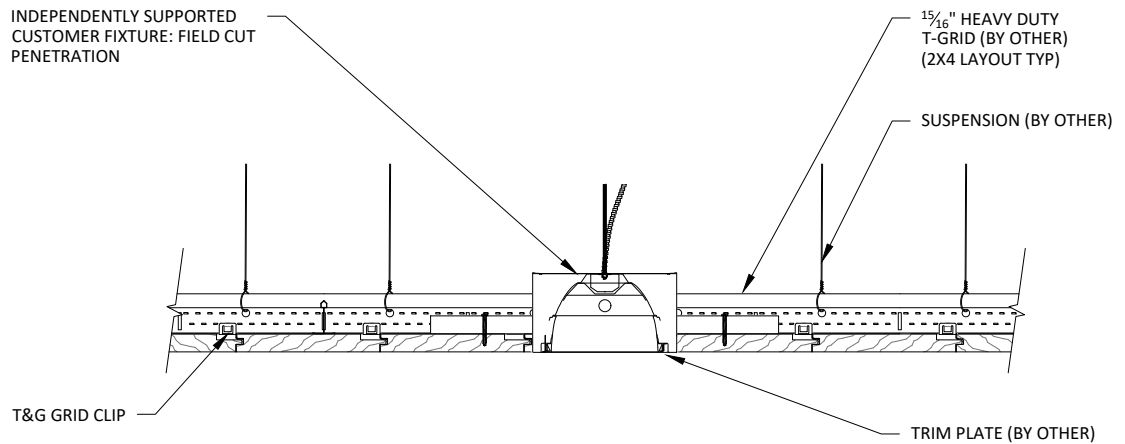
2

## RECESSED SPEAKER DETAIL - SECTION VIEW

1 1/2" = 1'-0"



**1** LINEAR LIGHT DETAIL - PLAN VIEW  
1" = 1'-0"



**2** LINEAR LIGHT DETAIL - SECTION VIEW  
1 1/2" = 1'-0"

$\frac{15}{16}$ " HEAVY DUTY  
T-GRID (BY OTHER)  
(2X4 LAYOUT TYP)

LINEAR PLANK

INDEPENDENTLY SUPPORTED  
CUSTOMER FIXTURE: FIELD CUT  
PENETRATION

IF PENETRATION EXCEEDS  
 $\frac{3}{4}$  BOARD WIDTH, SUPPORT  
BRACKETS ARE NEEDED  
(BY OTHER)

T&G GRID CLIP

2

1

## DIFFUSER DETAIL - PLAN VIEW

1 1/2" = 1'-0"

IF PENETRATION EXCEEDS  
 $\frac{3}{4}$  BOARD WIDTH, SUPPORT  
BRACKETS ARE NEEDED  
(BY OTHER)

SUSPENSION (BY OTHER)

T&G GRID CLIP

$\frac{15}{16}$ " HEAVY DUTY  
T-GRID (BY OTHER)  
(2X4 LAYOUT TYP)

INDEPENDENTLY SUPPORTED  
CUSTOMER FIXTURE: FIELD CUT  
PENETRATION

SUPPORT BRACKET  
FASTENED W/ SCREWS  
TO PLANKS (BY OTHER)

2

## DIFFUSER DETAIL - SECTION VIEW

1 1/2" = 1'-0"

# LINEAR T&G CEILING SYSTEM - DIFFUSER DETAIL

SHEET NUMBER

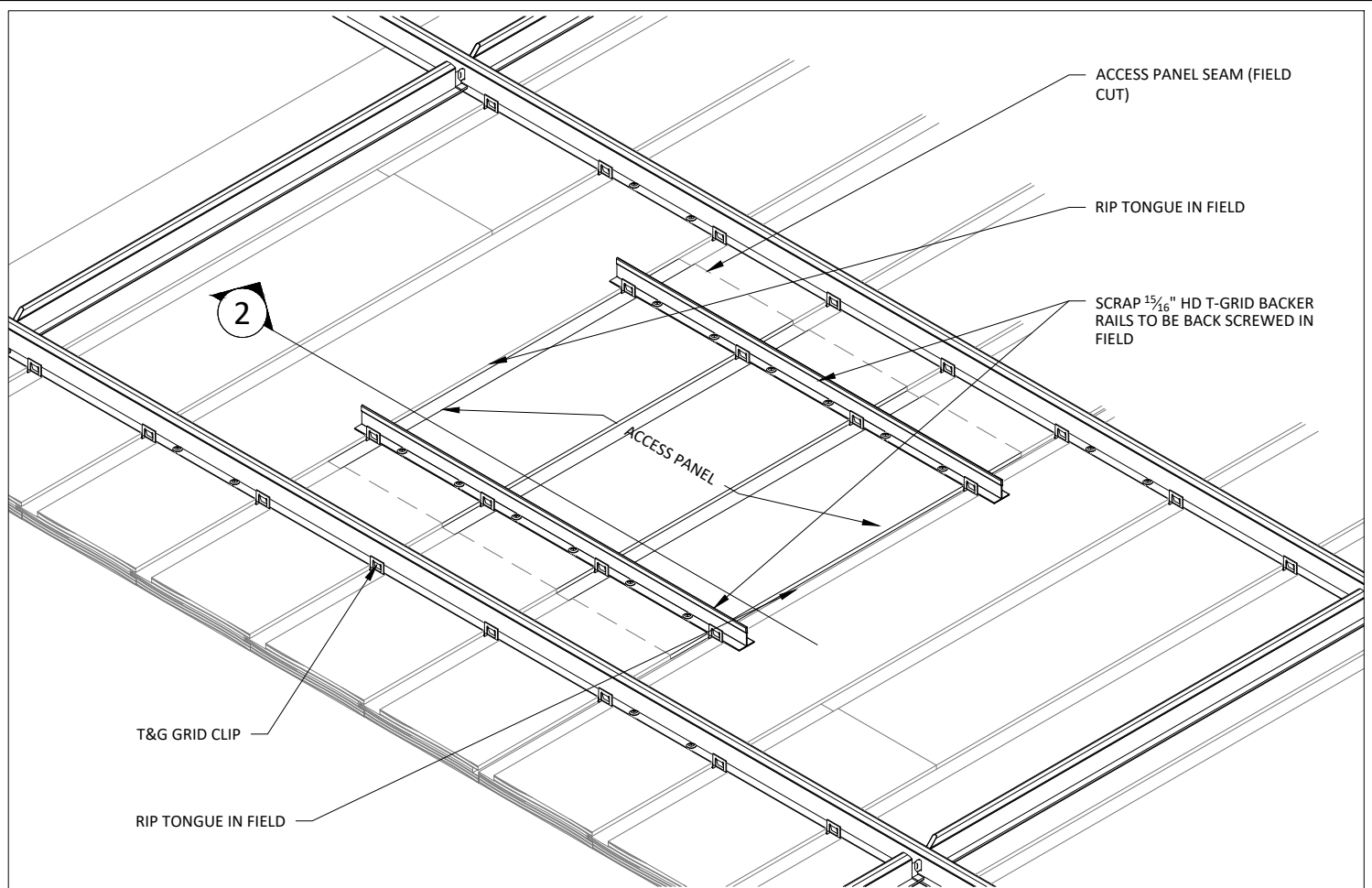
13

SCALE: AS NOTED

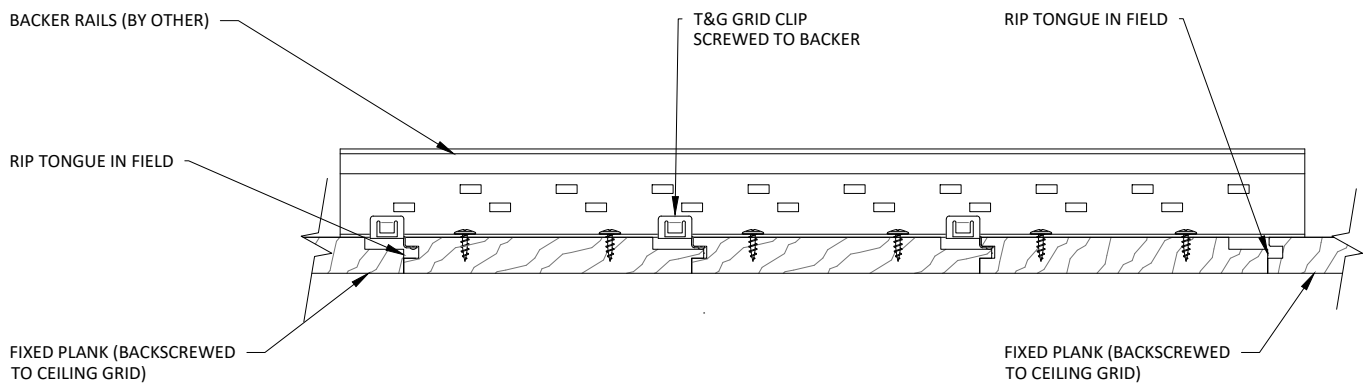
LAST REVISED: 4/14/2020

DRAWN BY: BMH

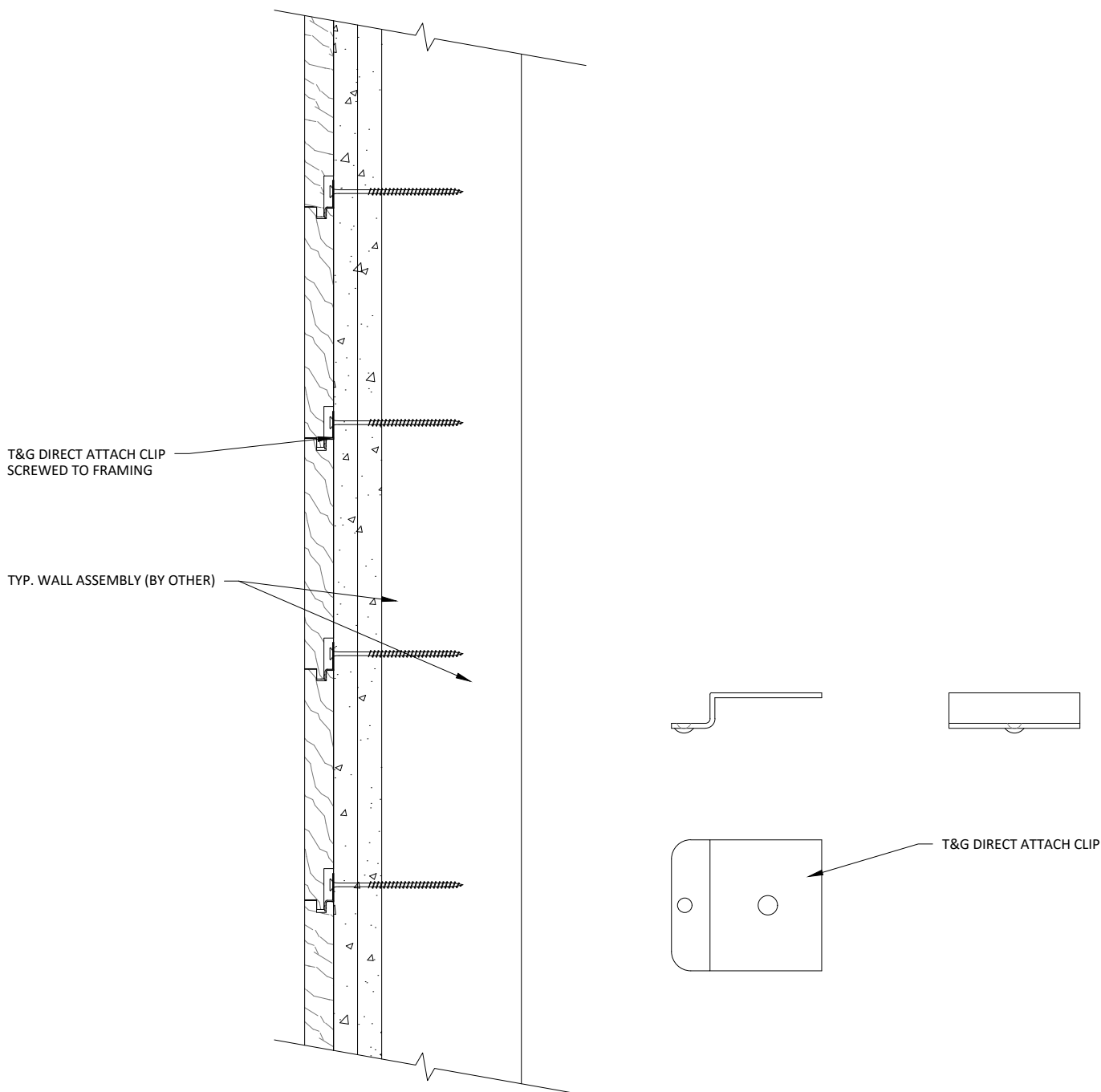
DO NOT SCALE DRAWING. FIGURED DIMENSIONS ARE TO BE FOLLOWED. READ THIS DRAWING IN CONNECTION WITH GENERAL ARCHITECTURAL PLANS, STRUCTURAL PLANS, AND OTHER RELATED DRAWINGS. THESE DRAWINGS REPRESENT ASI'S UNDERSTANDING AND INTERPRETATION OF THE ARCHITECTURAL DRAWINGS AND HOW ASI PRODUCTS RELATE TO THE PROJECT. COPYRIGHT ASI © 2020



1 ACCESS PANEL DETAIL  
1 1/2" = 1'-0"

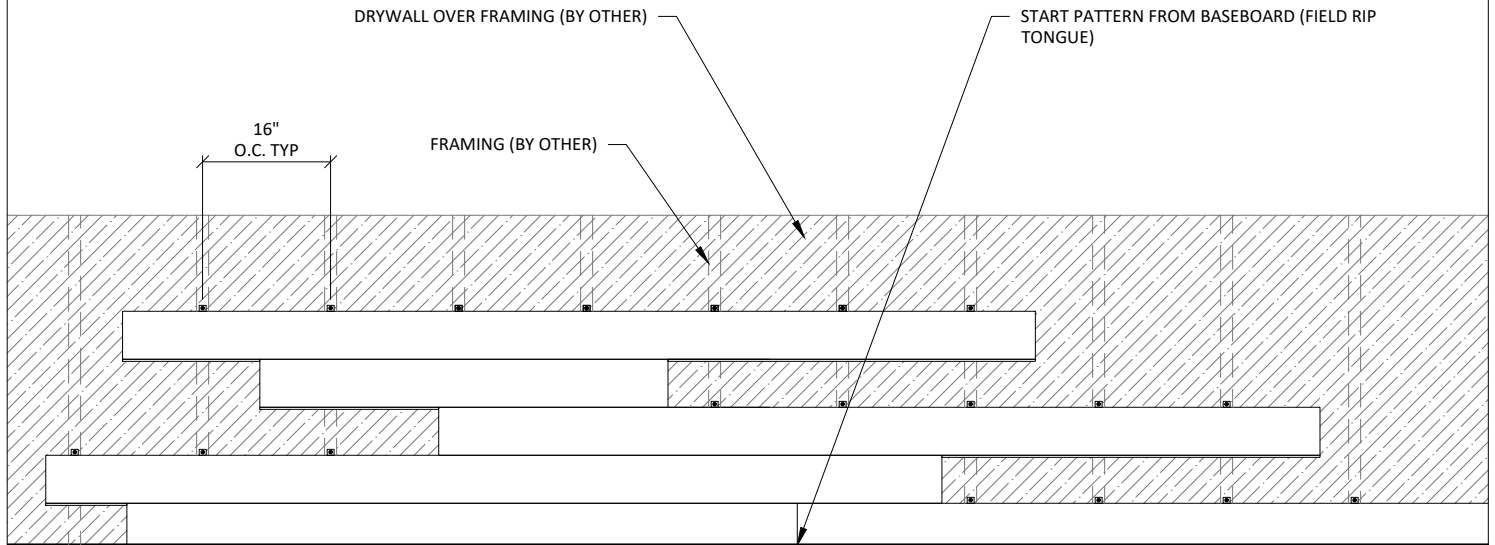


2 ACCESS PANEL SECTION  
3" = 1'-0"



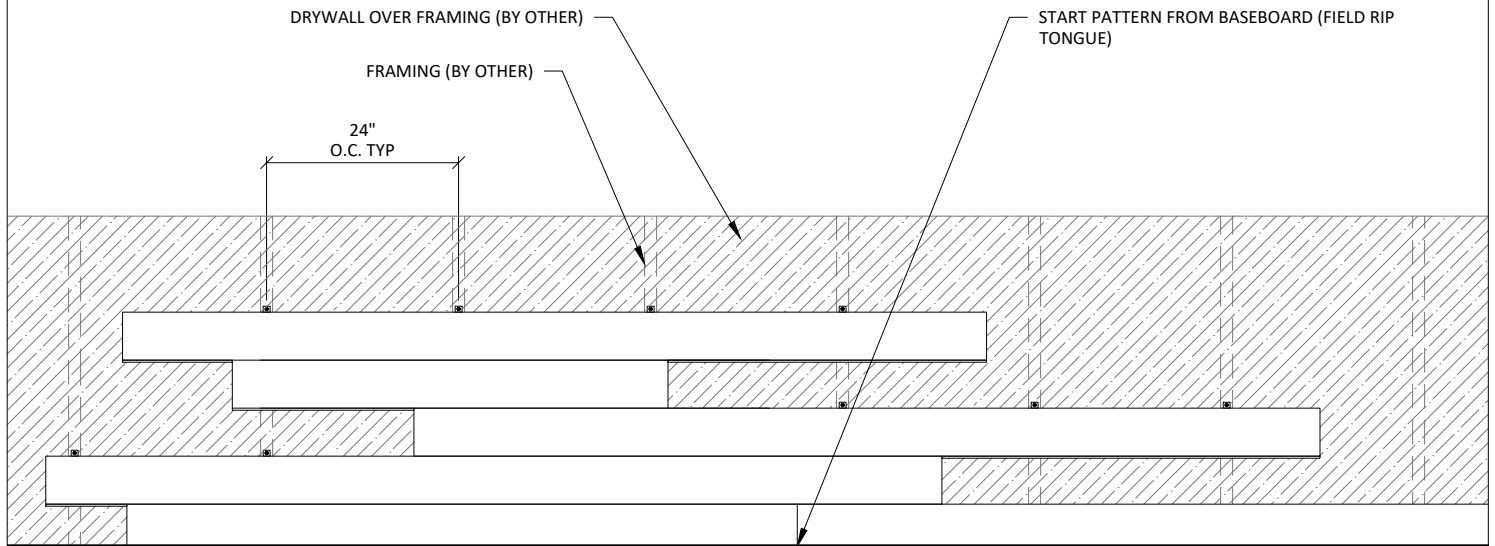
1 HORIZONTAL WALL SECTION  
3" = 1'-0"

2 T&G DIRECT ATTACH CLIP  
1' = 1'-0"



# 1 HORIZONTAL STAGGERED WALL PATTERN - 16 INCH SPACING

1/2" = 1'-0"



# 2 HORIZONTAL STAGGERED WALL PATTERN - 24 INCH SPACING

1/2" = 1'-0"



T&G DIRECT ATTACHMENT CLIP  
SCREWED TO FRAMING IN FIELD

TYP. WALL ASSEMBLY (BY OTHER)

TRIM TO COINCIDE W/ FURRING  
THICKNESS FASTENED W/ FINISH  
NAIL (OPTIONAL)

16 GA. FINISH  
NAIL (BY OTHER)

1

## HORIZONTAL WALL SYSTEM ISOMETRIC

1 1/2" = 1'-0"

## LINEAR T&G WALL SYSTEM - HORIZONTAL ISOMETRIC

SCALE: AS NOTED

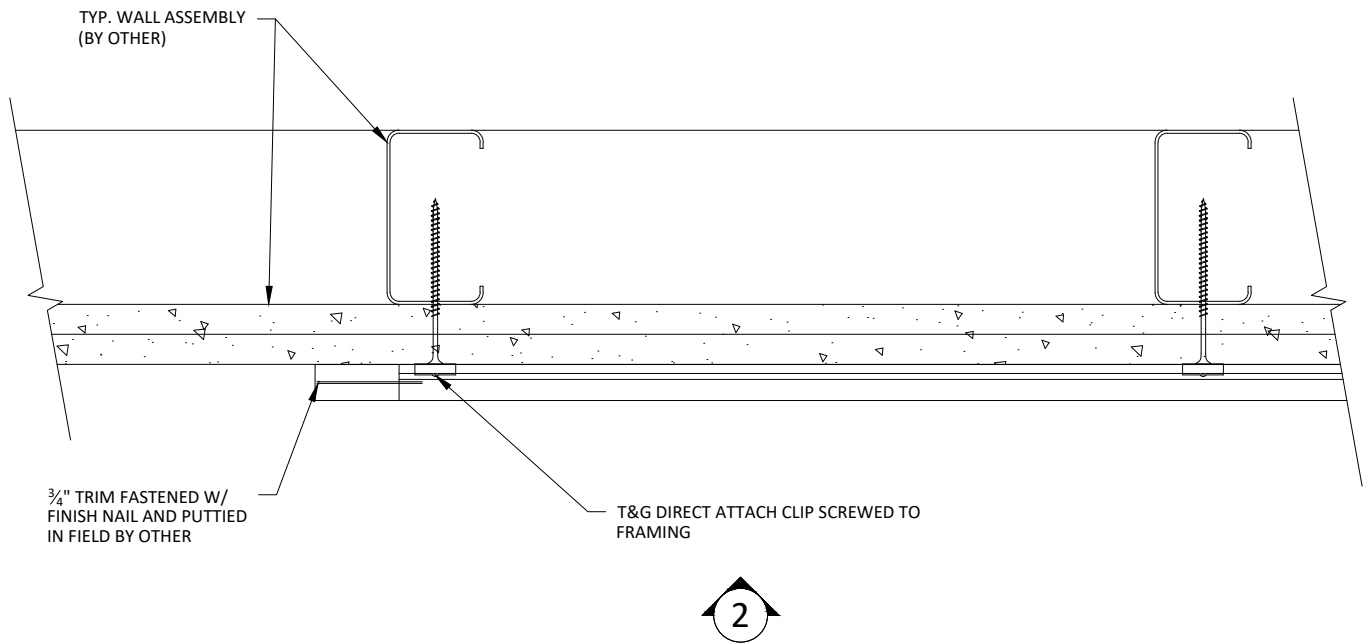
LAST REVISED: 4/14/2020

DO NOT SCALE DRAWING. FIGURED DIMENSIONS ARE TO BE FOLLOWED. READ THIS DRAWING IN CONNECTION WITH GENERAL ARCHITECTURAL PLANS, STRUCTURAL PLANS, AND OTHER RELATED DRAWINGS. THESE DRAWINGS REPRESENT ASI'S UNDERSTANDING AND INTERPRETATION OF THE ARCHITECTURAL DRAWINGS AND HOW ASI PRODUCTS RELATE TO THE PROJECT. COPYRIGHT ASI © 2020

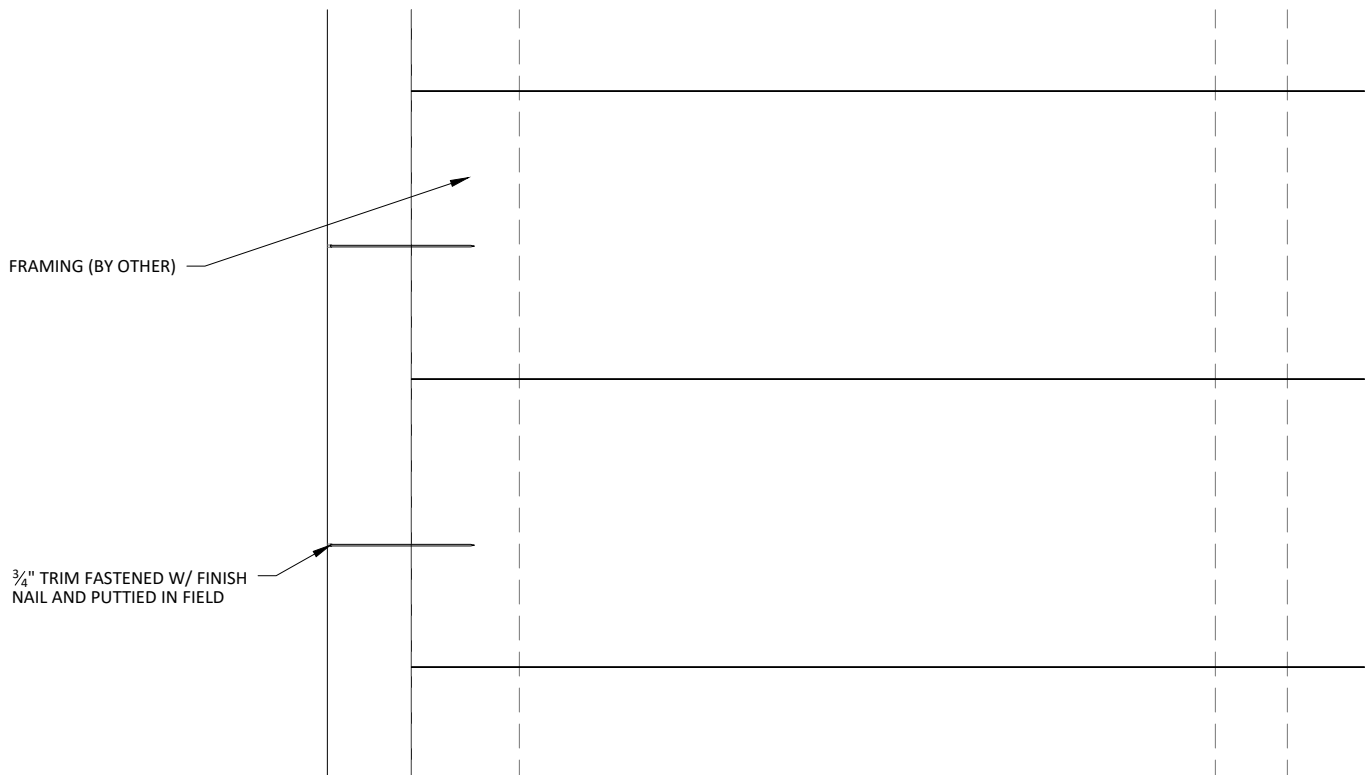
SHEET NUMBER

17

DRAWN BY: BMH



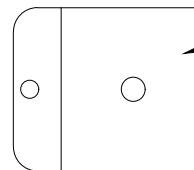
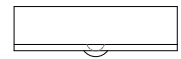
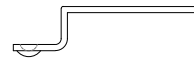
1 HORIZONTAL WALL PLAN @ TRIM  
3" = 1'-0"



2 HORIZONTAL WALL ELEVATION @ TRIM  
3" = 1'-0"

T&G DIRECT ATTACH CLIP  
SCREWED TO FRAMING

TYP. WALL SYSTEM (BY OTHER)



T&G DIRECT ATTACH CLIP

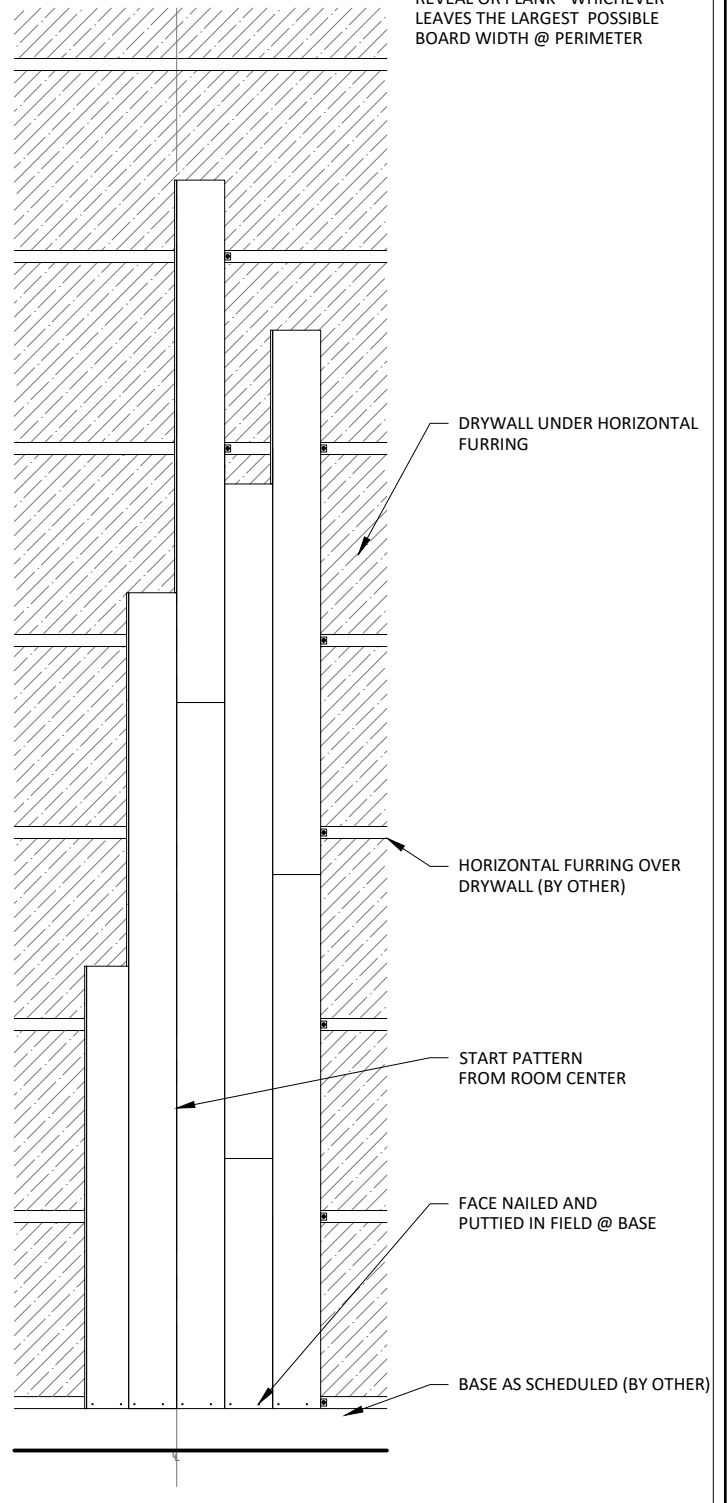
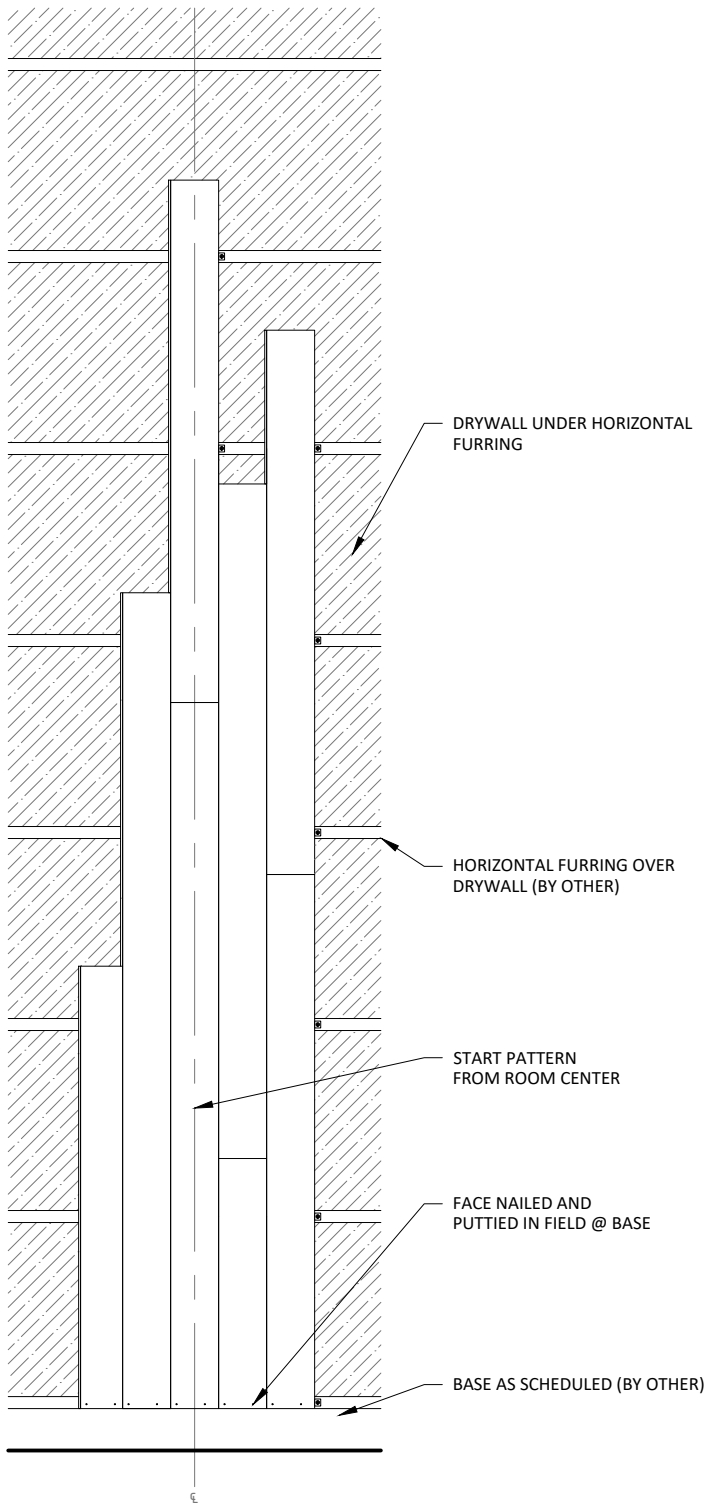
1 VERTICAL WALL SECTION

3" = 1'-0"

2 T&G DIRECT ATTACH CLIP

1' = 1'-0"

NOTE: START PATTERN O.C. WITH REVEAL OR PLANK - WHICHEVER LEAVES THE LARGEST POSSIBLE BOARD WIDTH @ PERIMETER



1 VERTICAL WALL PATTERN 1  
1/2" = 1'-0"

2 VERTICAL WALL PATTERN 2  
1/2" = 1'-0"

T&G DIRECT ATTACHMENT CLIP  
SCREWED TO FRAMING IN FIELD

TYP. WALL SYSTEM (BY OTHER)

HORIZONTAL FURRING OVER  
DRYWALL (BY OTHER)

16 GA. FINISH  
NAIL (BY OTHER)

TRIM TO COINCIDE W/  
FURRING THICKNESS  
FASTENED W/ FINISH  
NAIL (OPTIONAL)

1

VERTICAL WALL SYSTEM ISOMETRIC  
1 1/2" = 1'-0"

FURRING OVER DRYWALL (BY OTHER)

T&G DIRECT ATTACH CLIP SCREWED TO FRAMING

3/4" TRIM FASTENED W/  
FINISH NAIL AND PUTTIED  
IN FIELD BY OTHER

TYP. WALL SYSTEM  
(BY OTHER)

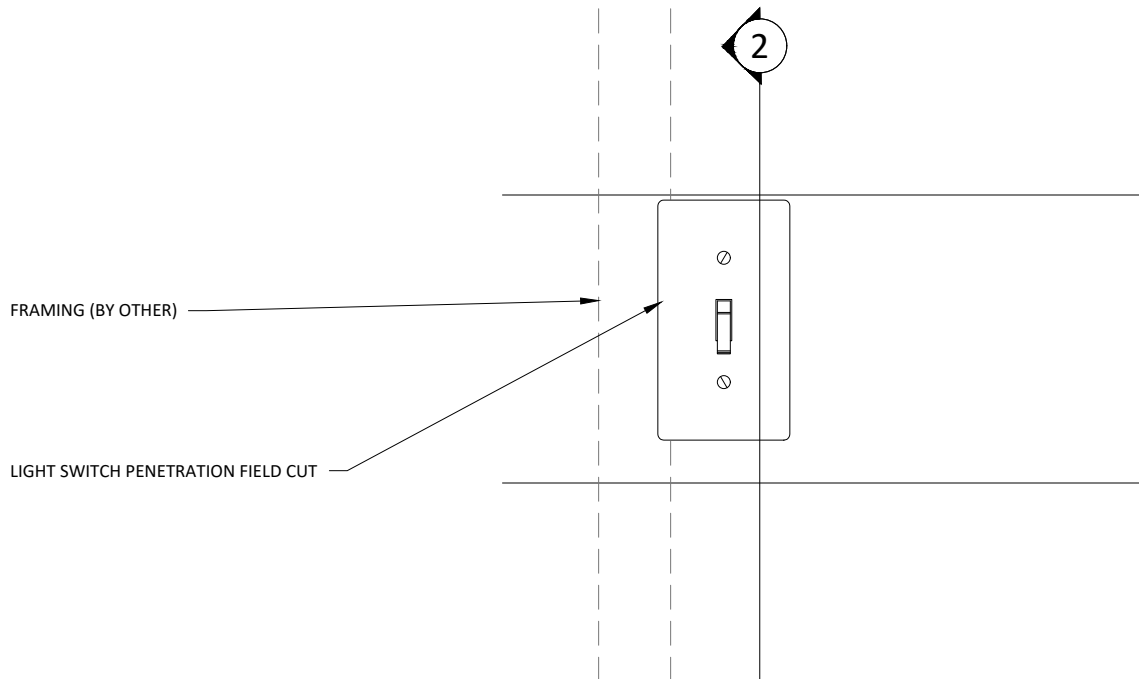
2

1 VERTICAL WALL PLAN @ TRIM  
3" = 1'-0"

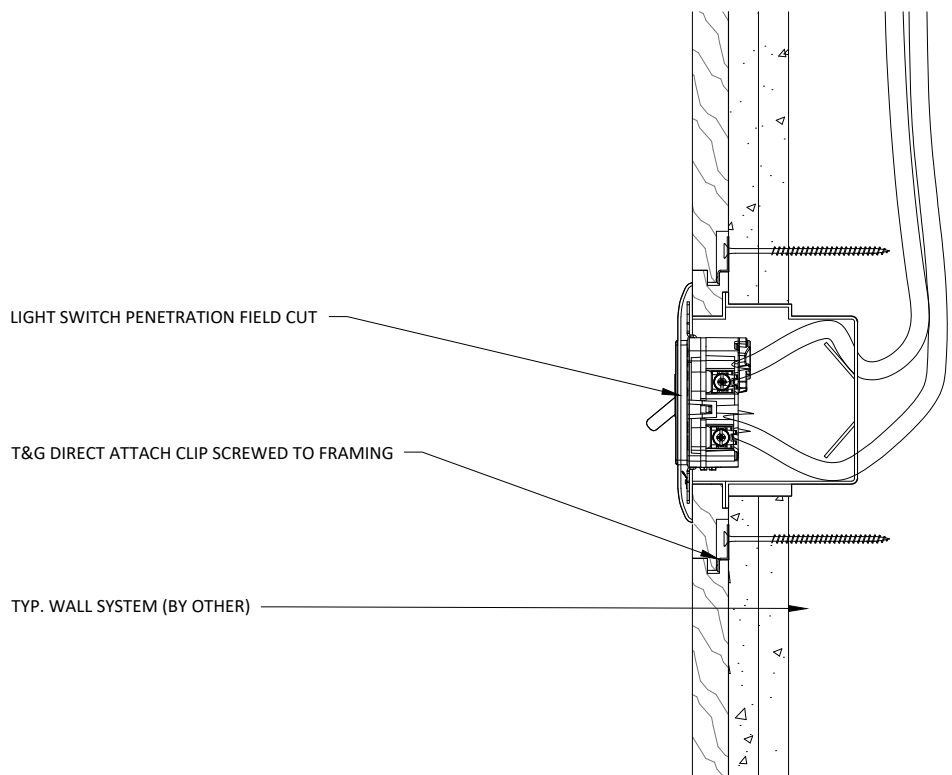
HORIZONTAL FURRING OVER  
DRYWALL (BY OTHER)

3/4" TRIM FASTENED W/  
FINISH NAIL AND PUTTIED  
IN FIELD BY OTHER

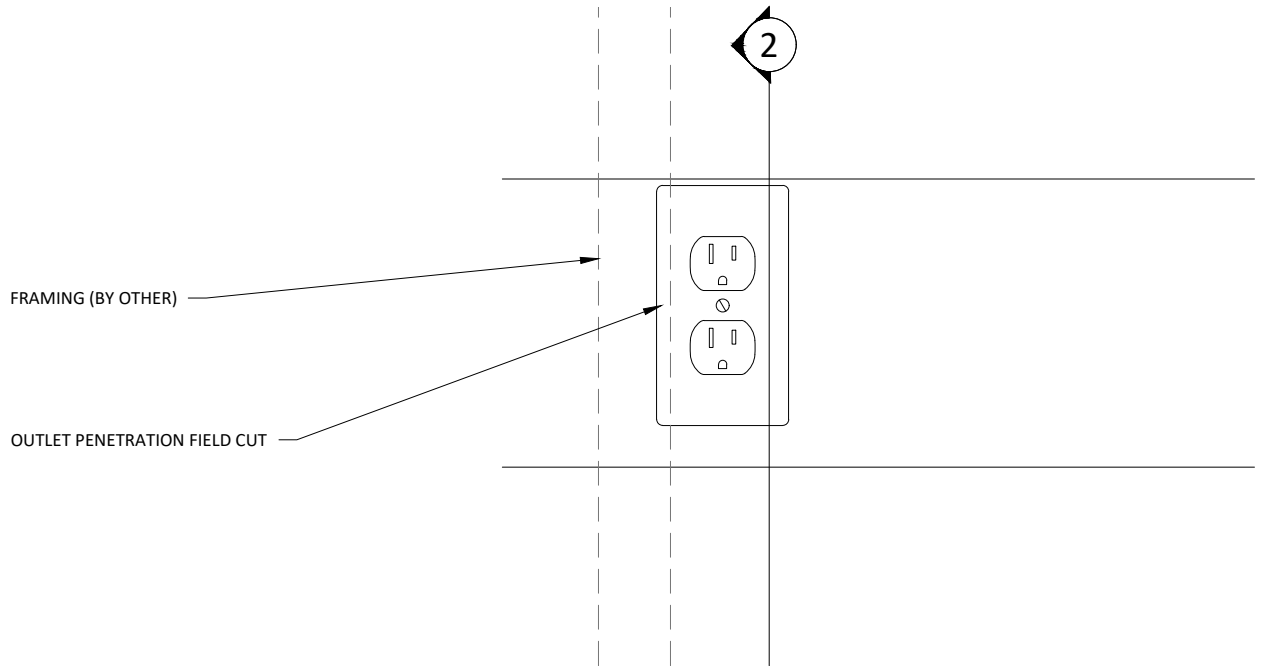
2 VERTICAL WALL ELEVATION @ TRIM  
3" = 1'-0"



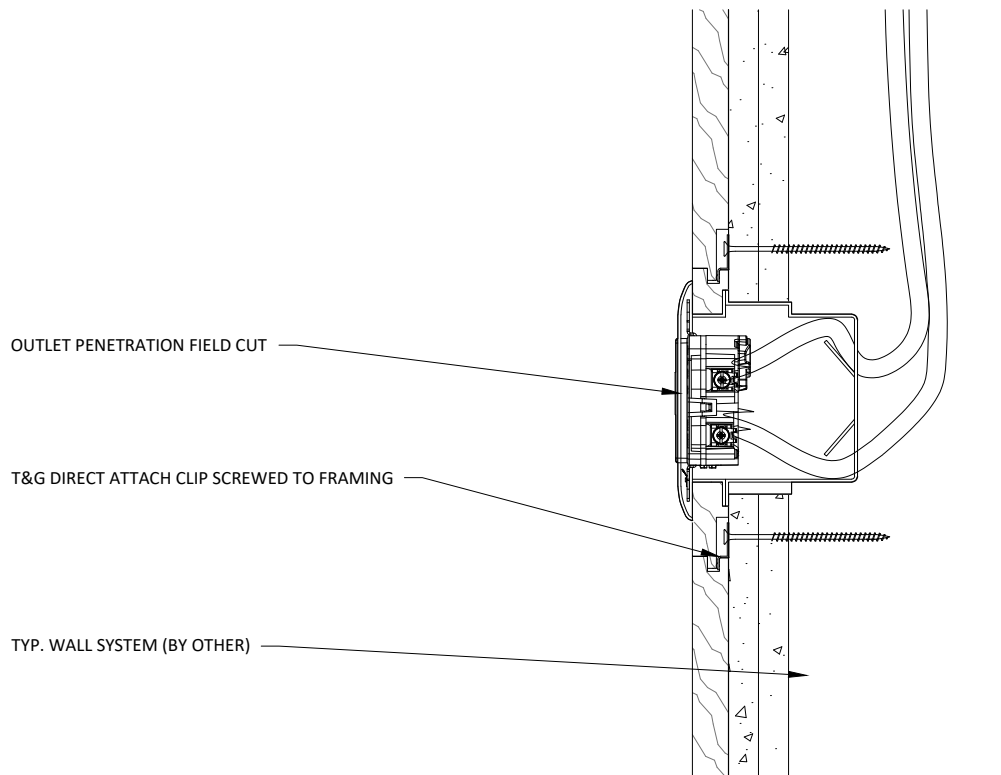
1 LIGHT SWITCH DETAIL - ELEVATION  
3" = 1'-0"



2 LIGHT SWITCH DETAIL - SECTION  
3" = 1'-0"



1 OUTLET DETAIL - ELEVATION  
3" = 1'-0"



2 OUTLET DETAIL - SECTION  
3" = 1'-0"



2

FRAMING (BY OTHER) TO MATCH  
ACOUSTICAL BACKER THICKNESS

FACE NAIL & PUTTY IN FIELD

BASE AS SCHEDULED (BY OTHER)

1

## BASEBOARD DETAIL - ELEVATION

3" = 1'-0"

T&G DIRECT ATTACH CLIP SCREWED TO FRAMING

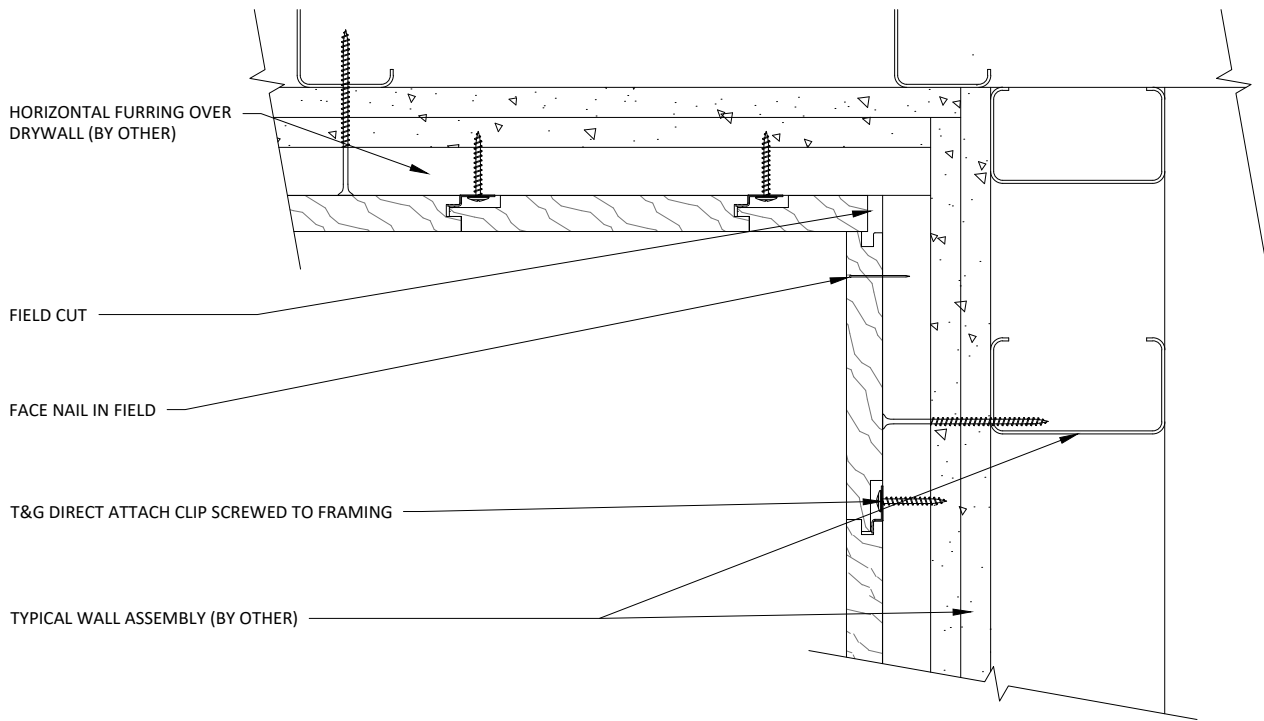
FACE NAIL & PUTTY IN FIELD

BASE AS SCHEDULED (BY OTHER)

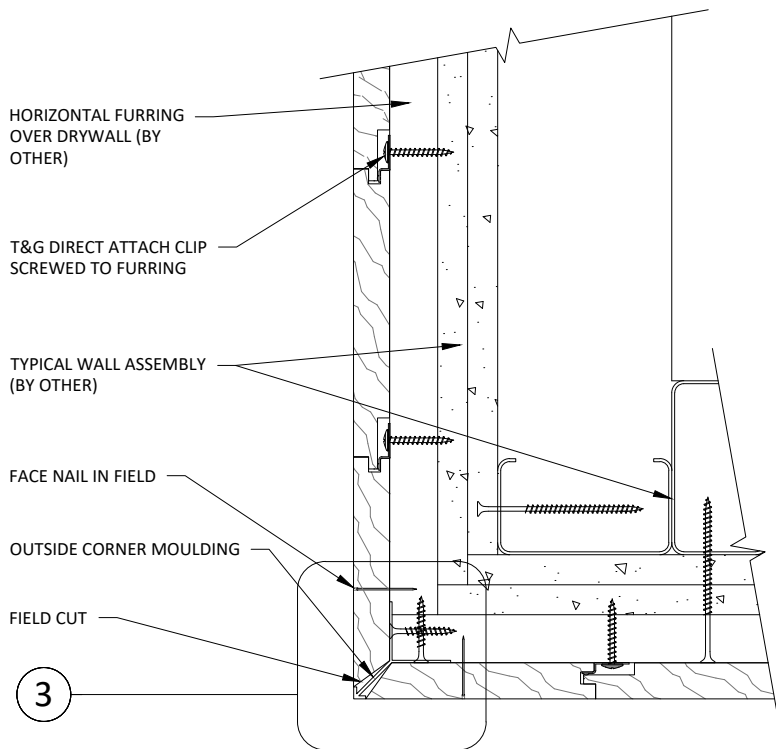
2

## BASEBOARD DETAIL - SECTION

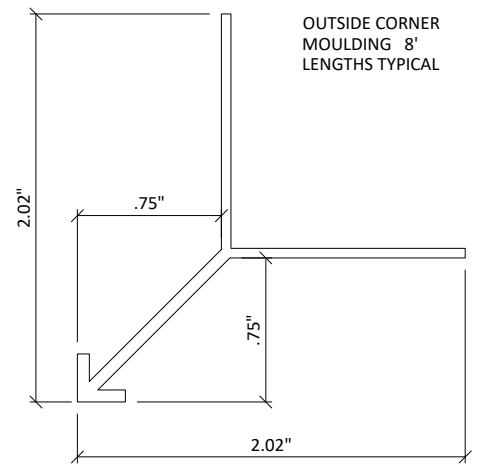
3" = 1'-0"



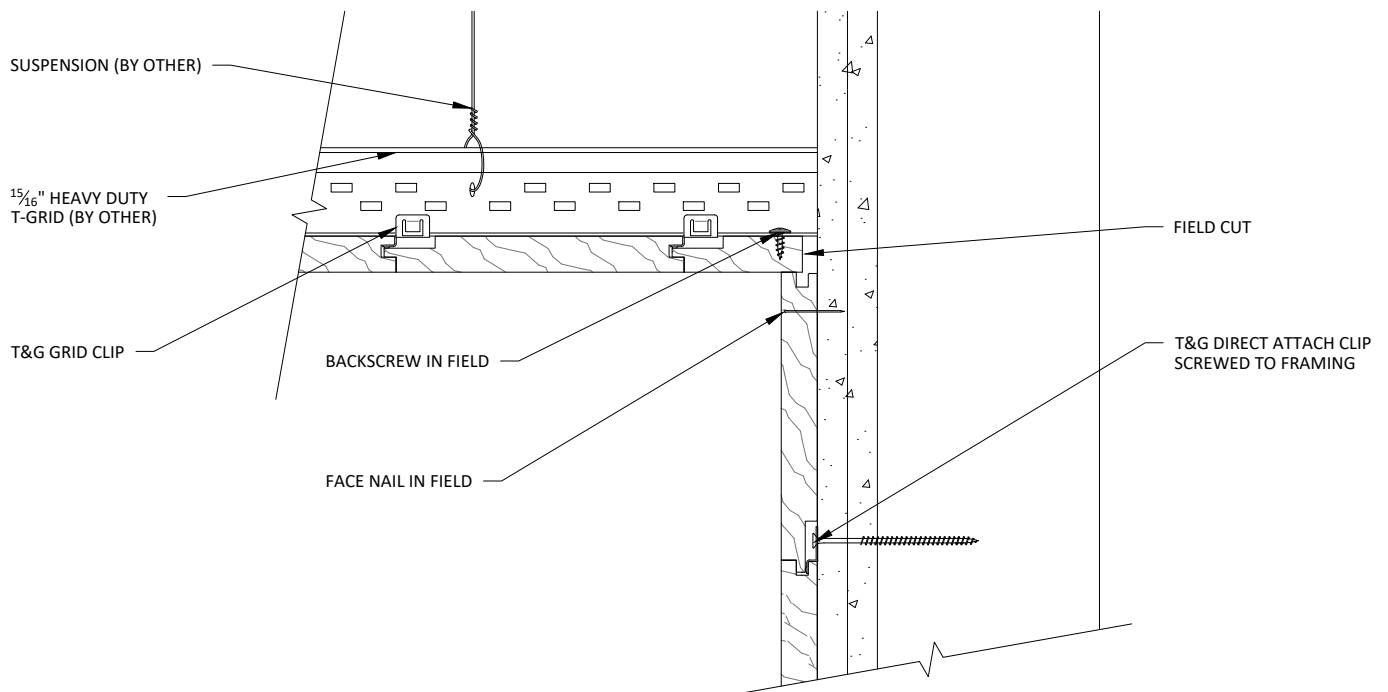
**1** VERTICAL PLANK INSIDE CORNER PLAN  
3" = 1'-0"



**2** VERTICAL PLANK OUTSIDE CORNER PLAN  
3" = 1'-0"



**3** SECTION (WDOCT)  
1' = 1'-0"



# 1 WALL-TO-CEILING TRANSITION (OPTION 1) 3" = 1'-0"

1 5/16" HEAVY DUTY  
T-GRID (BY OTHER)

EVERY 6TH PLANK TO BE  
BACKSCREWED IN FIELD

T&G GRID CLIP

FIELD CUT LAP JOINT

FACE NAIL IN FIELD

SUSPENSION (BY OTHER)

BACKSCREW IN FIELD

DRYWALL OVER FRAMING (BY OTHER)

T&G DIRECT ATTACH CLIP SCREWED  
TO FRAMING

1

## HORIZONTAL WALL-TO-VAULTED CEILING

3" = 1'-0"

1 5/16" HEAVY DUTY  
T-GRID (BY OTHER)

T&G GRID CLIP

FIELD CUT LAP JOINT

SUSPENSION (BY OTHER)

T&G DIRECT ATTACH CLIP SCREWED TO  
FRAMING

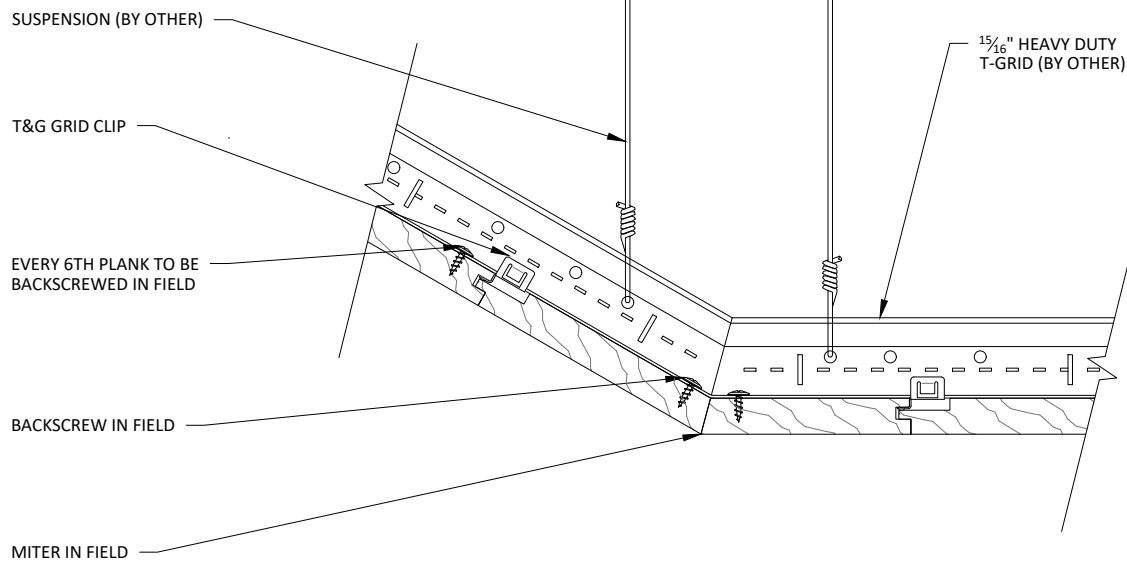
DRYWALL OVER FRAMING (BY OTHER)

HORIZONTAL FURRING OVER  
DRYWALL (BY OTHER)

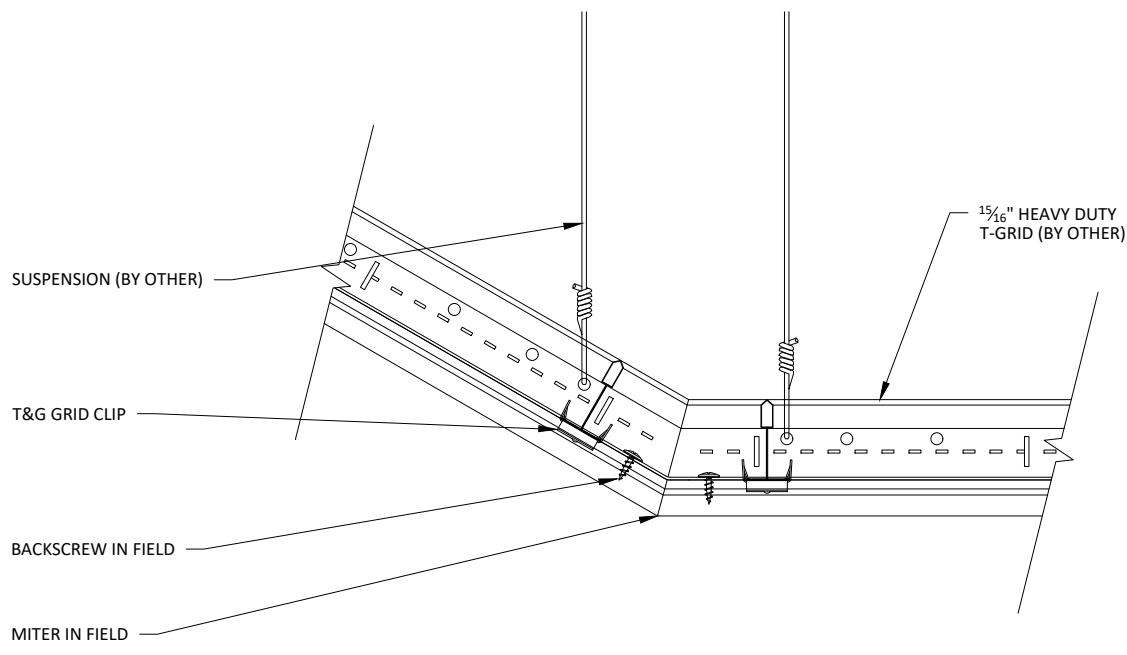
2

## VERTICAL WALL-TO-VAULTED CEILING

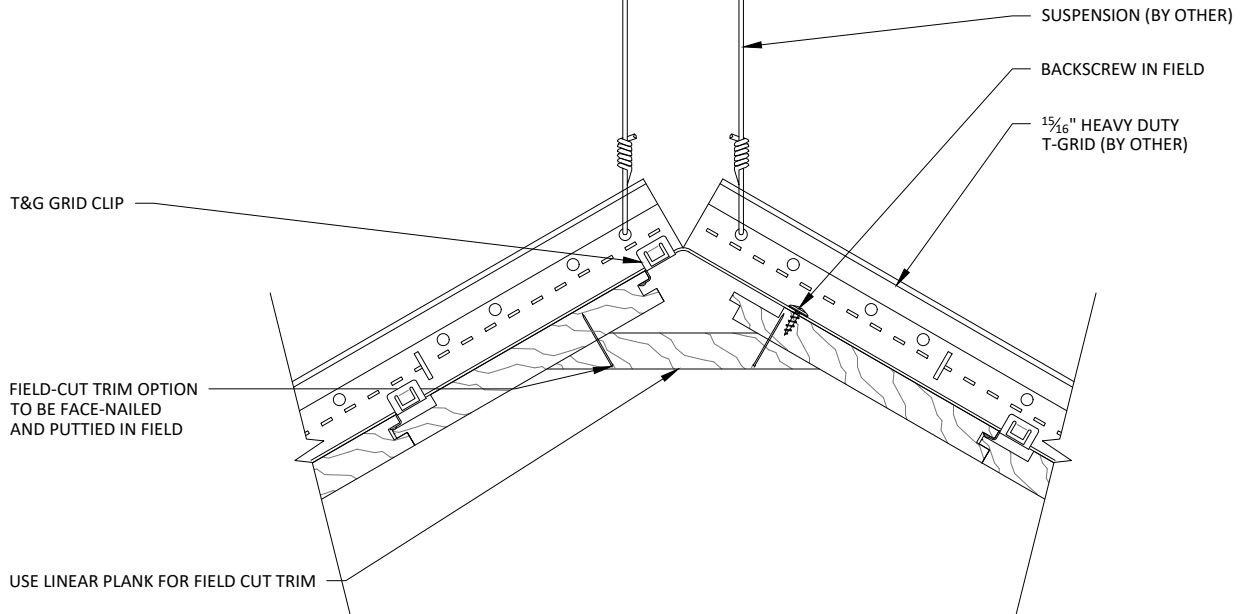
3" = 1'-0"



1 HORIZONTAL VAULTED CEILING RETURN  
3" = 1'-0"



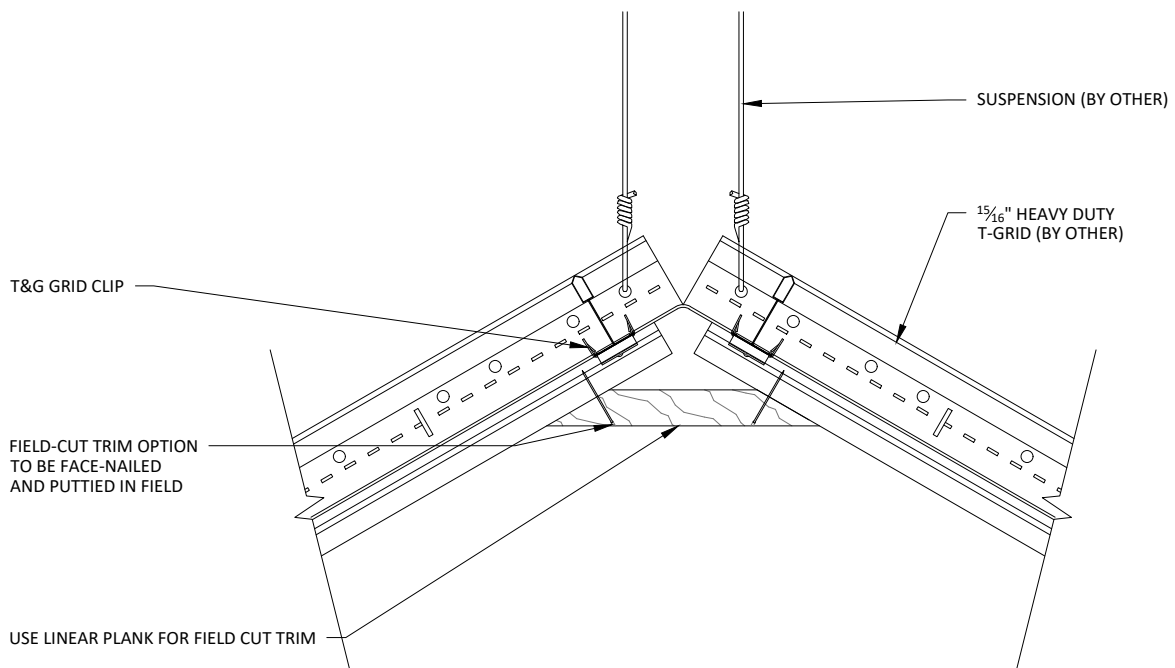
2 VERTICAL VAULTED CEILING RETURN  
3" = 1'-0"



1

## HORIZONTAL VAULTED CEILING PEAK

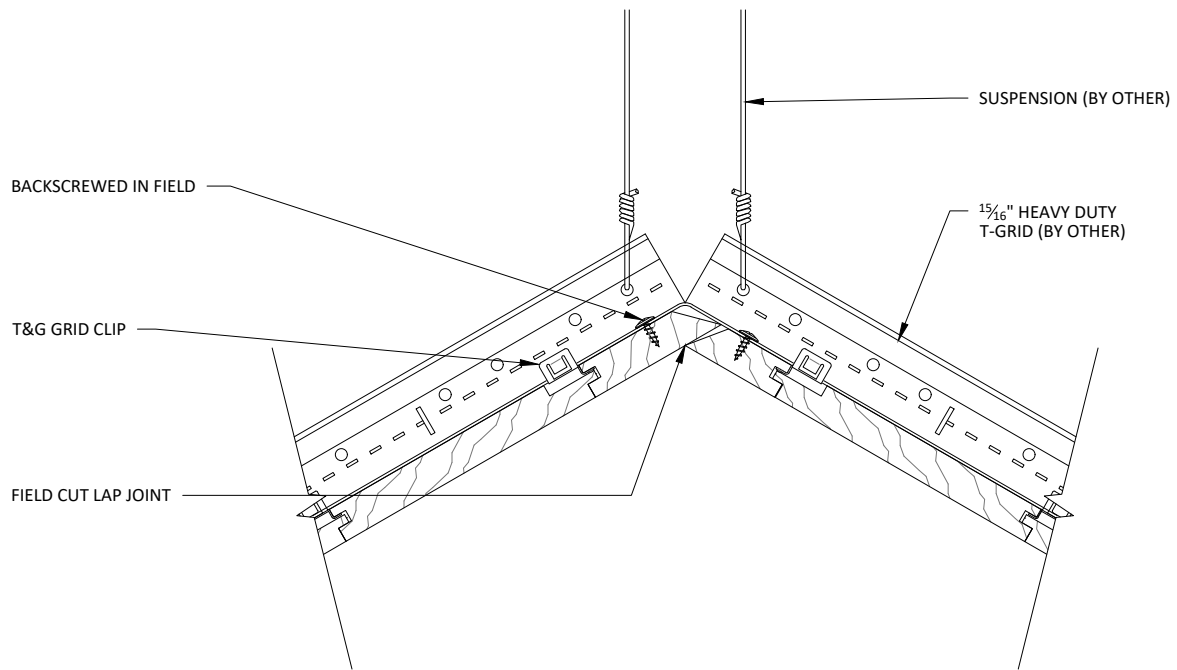
3" = 1'-0"



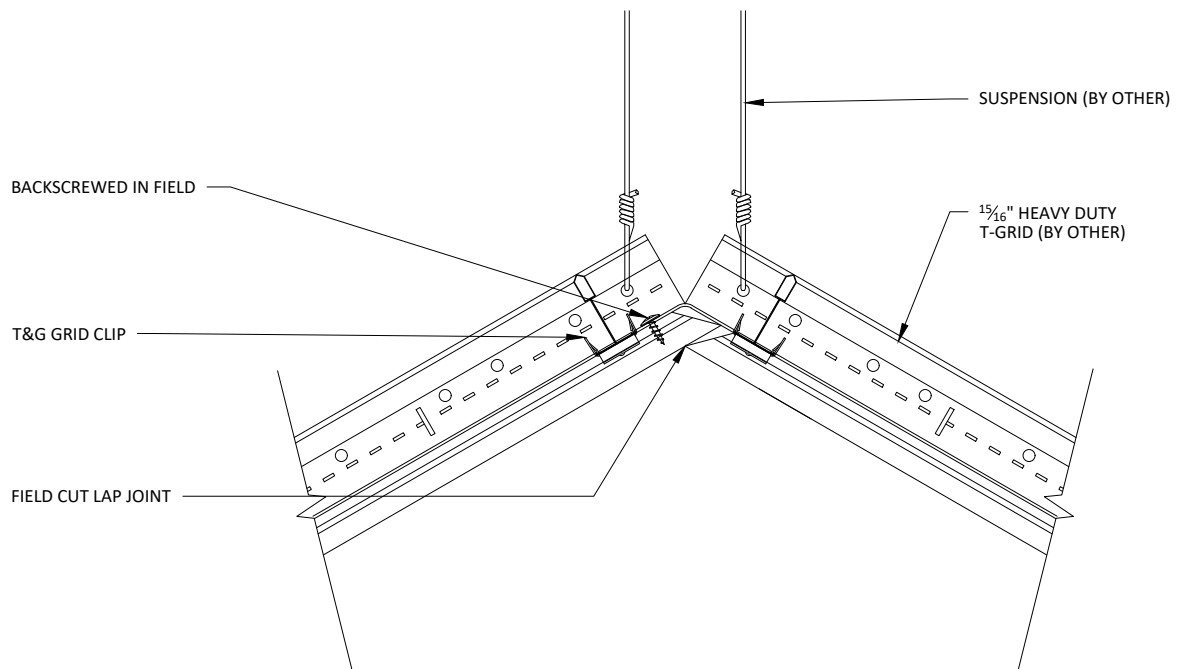
2

## VERTICAL VAULTED CEILING PEAK

3" = 1'-0"



**1 HORIZONTAL VAULTED CEILING PEAK - LAP JOINT**  
3" = 1'-0"



**2 VERTICAL VAULTED CEILING PEAK - LAP JOINT**  
3" = 1'-0"