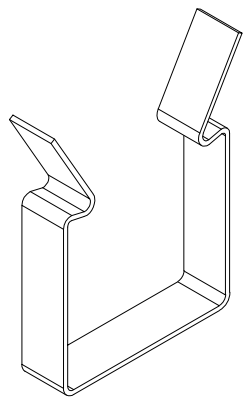
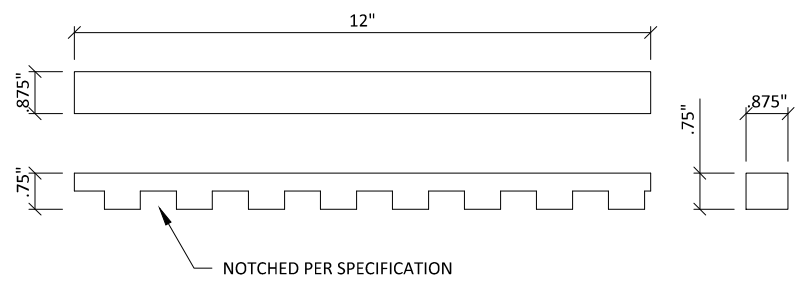


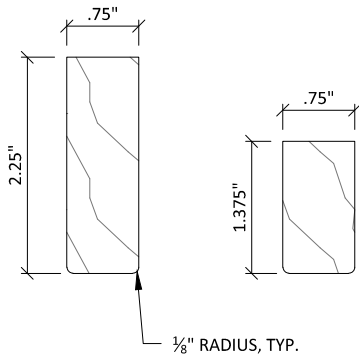
1 TYPICAL SECTION VIEW
3" = 1'-0"



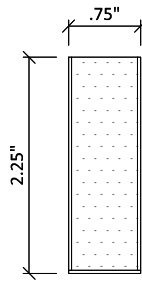
2 NOTCHED BACKER CLIP
1' = 1'-0"



3 NOTCHED BACKER
3" = 1'-0"



SOLID WOOD RAIL



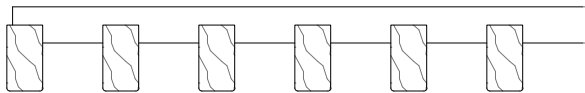
VENEERED RAIL

CUSTOM PROFILES AVAILABLE UPON REQUEST

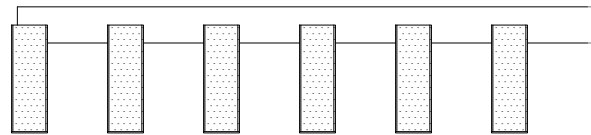
1

TYPICAL RAIL PROFILES

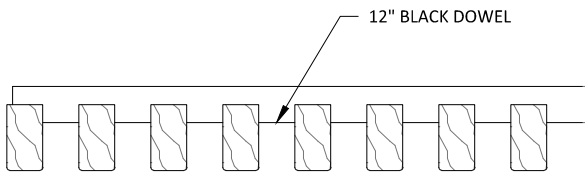
6" = 1'-0"



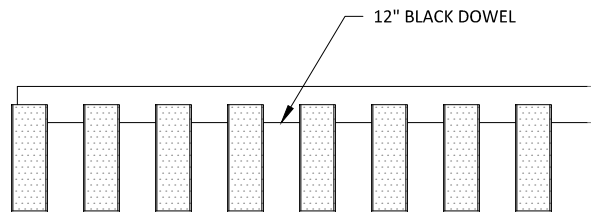
3/4" X 1 3/8" RAILS
6 RAIL/FT.
2" SPACING O.C.



3/4" X 2 1/4" RAILS
6 RAIL/FT.
2" SPACING O.C.



3/4" X 1 3/8" RAILS
8 RAIL/FT.
1 1/2" SPACING O.C.



3/4" X 2 1/4" RAILS
8 RAIL/FT.
1 1/2" SPACING O.C.

2

TYPICAL 12 INCH MODULES

3" = 1'-0"

GRILLE-NOTCHED SYSTEM - TYPICAL PROFILE OPTIONS

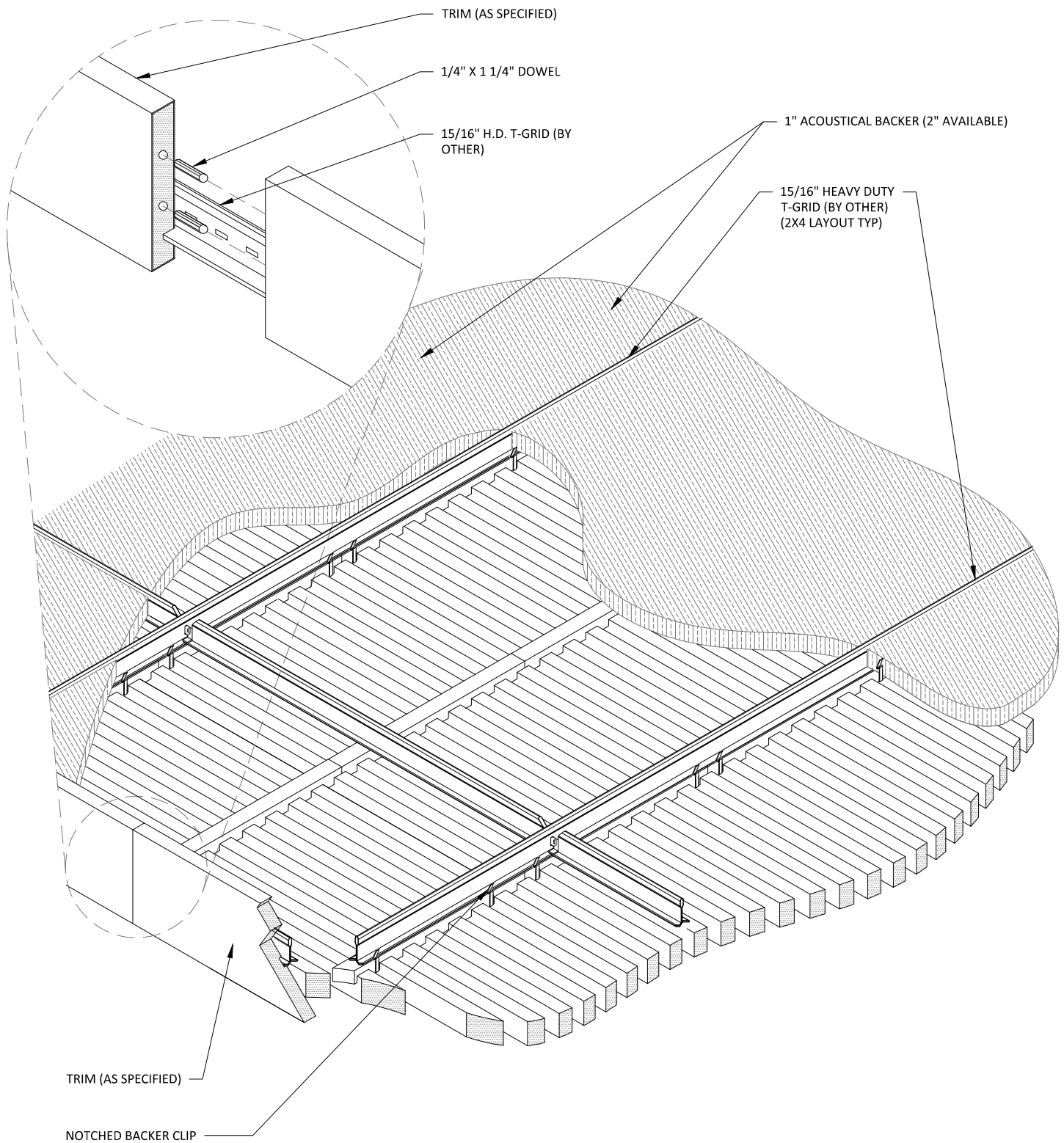
SCALE: AS NOTED

LAST REVISED: 6/29/2023

SHEET NUMBER

2

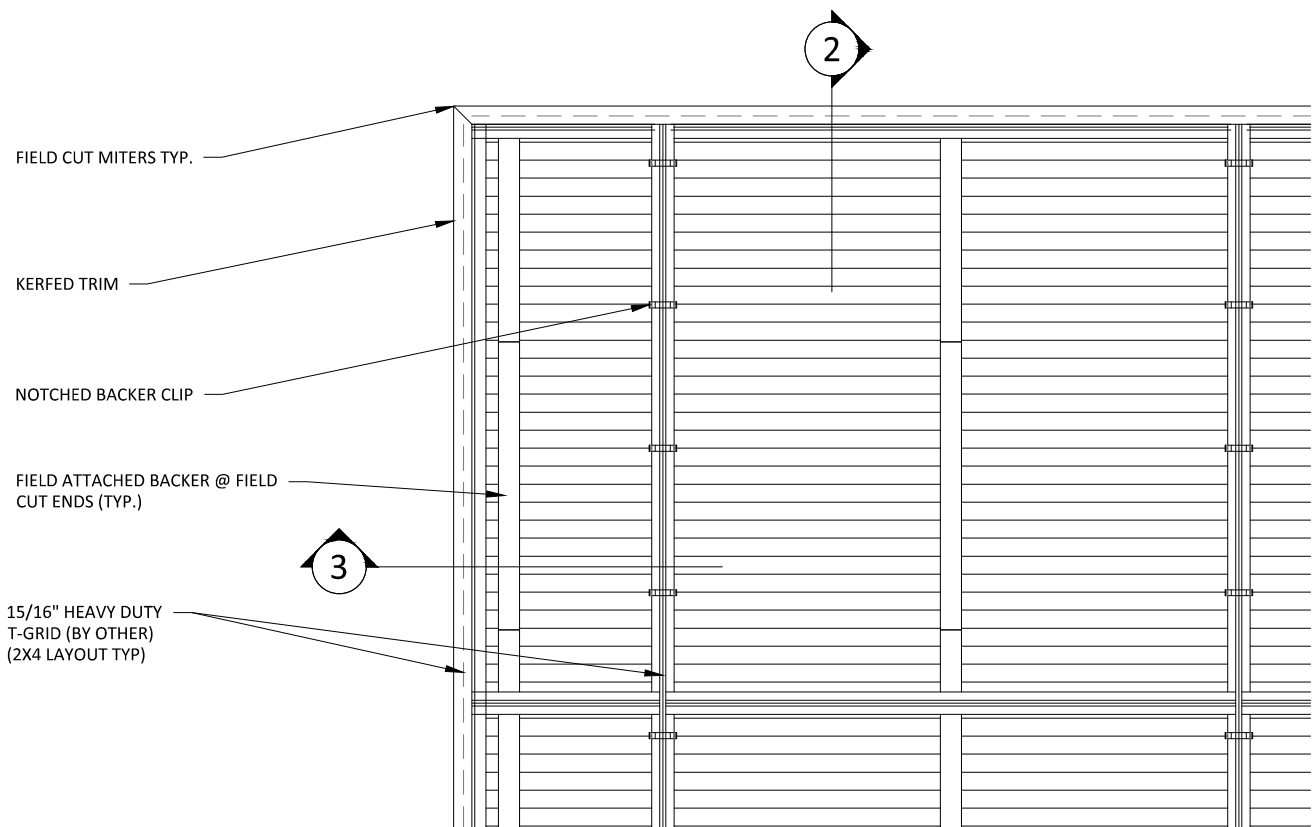
DRAWN BY: BH



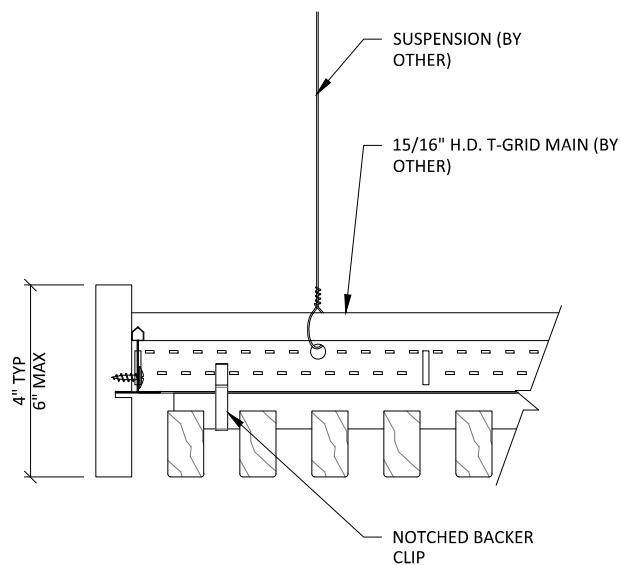
1

CEILING ISOMETRIC - TYP.

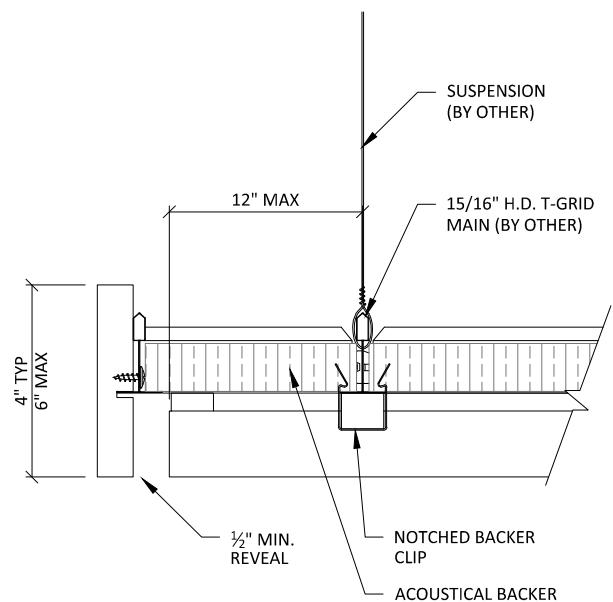
1 1/2" = 1'-0"



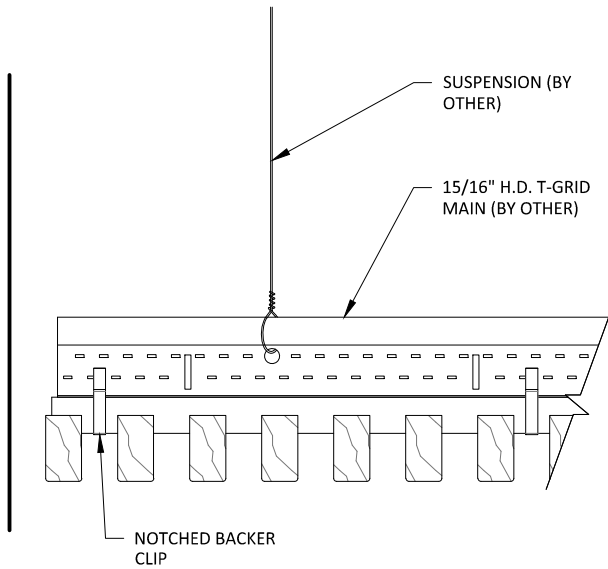
1 TRIM @ MITERED CORNER - PLAN
1 1/2" = 1'-0"



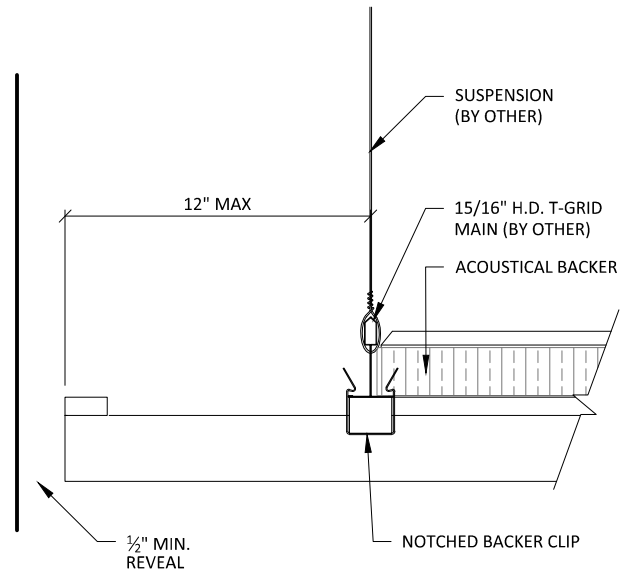
2 TRIM DETAIL 1
3" = 1'-0"



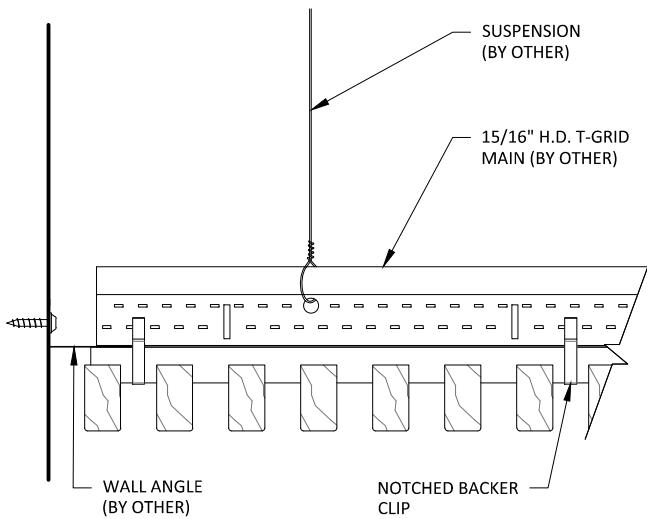
3 TRIM DETAIL 2
3" = 1'-0"



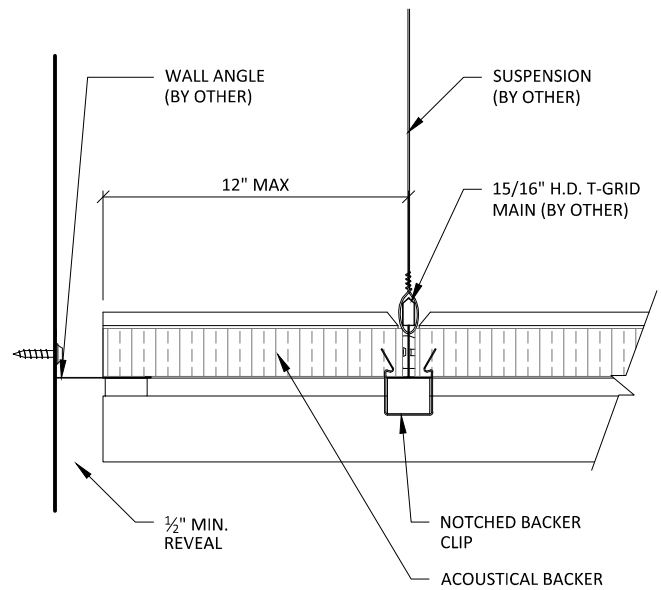
1 EDGE DETAIL 1



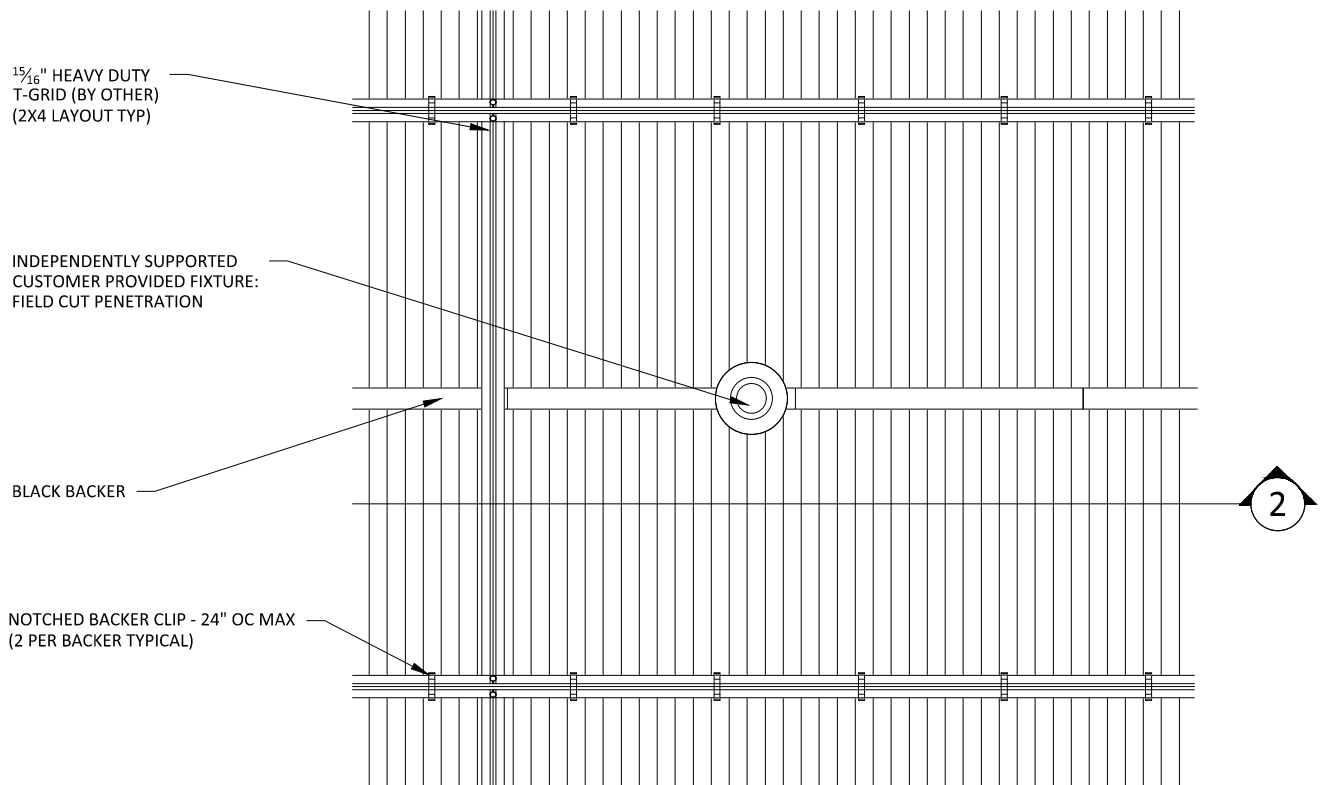
2 EDGE DETAIL 2



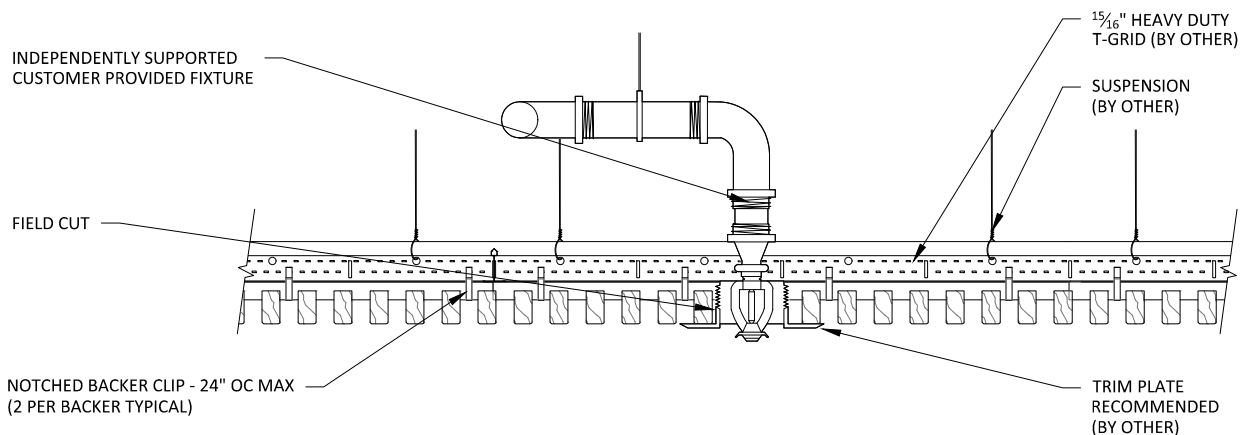
3 EDGE DETAIL 3



4 EDGE DETAIL 4



1 SPRINKLER HEAD DETAIL - PLAN VIEW
1 1/2" = 1'-0"



2 SPRINKLER HEAD DETAIL - SECTION VIEW
1 1/2" = 1'-0"

15/16" HEAVY DUTY
T-GRID (BY OTHER)
(2X4 LAYOUT TYP)

INDEPENDENTLY SUPPORTED
CUSTOMER PROVIDED FIXTURE:
FIELD CUT PENETRATION

BLACK BACKER

NOTCHED BACKER CLIP - 24" OC MAX
(2 PER BACKER TYPICAL)

2

1

CAN LIGHT DETAIL - PLAN VIEW

1 1/2" = 1'-0"

INDEPENDENTLY SUPPORTED
CUSTOMER PROVIDED FIXTURE

FIELD CUT

NOTCHED BACKER CLIP - 24" OC MAX
(2 PER BACKER TYPICAL)

15/16" HEAVY DUTY
T-GRID (BY OTHER)

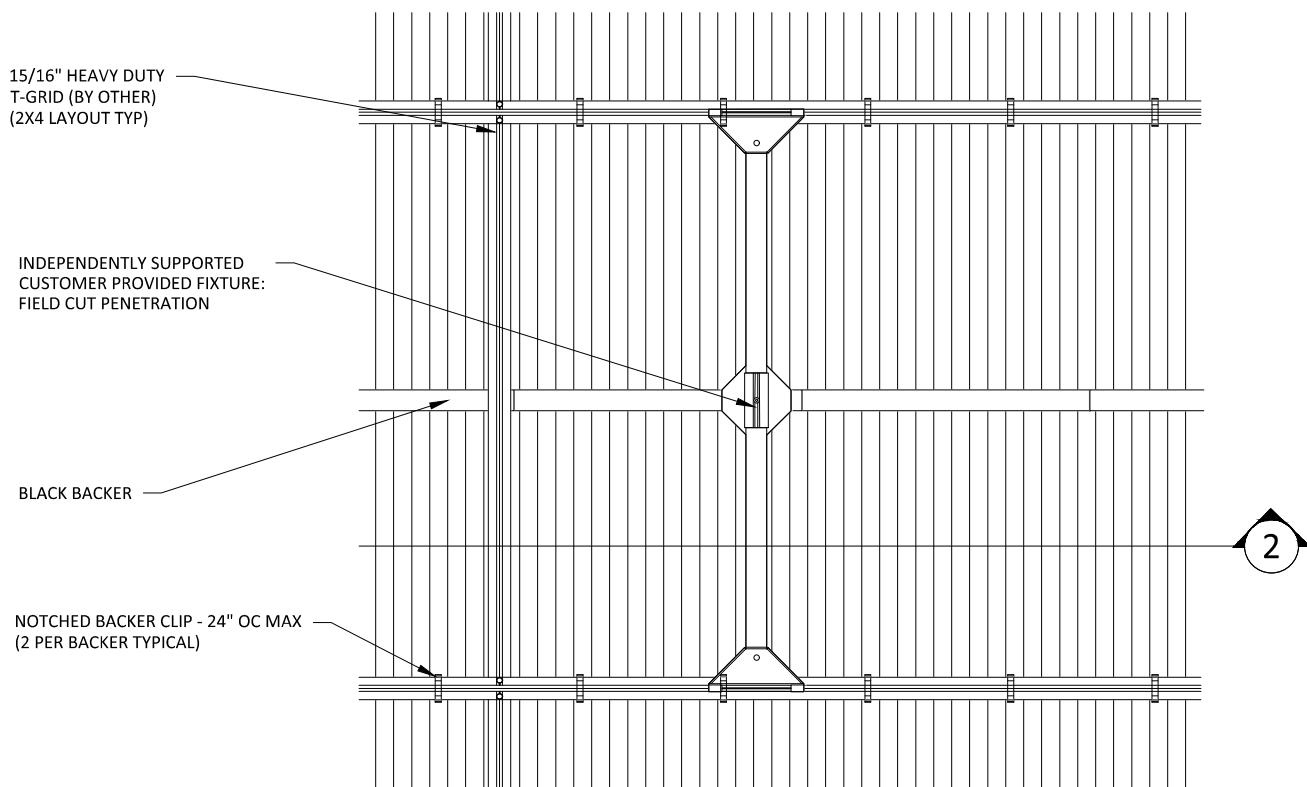
SUSPENSION
(BY OTHER)

TRIM PLATE
RECOMMENDED
(BY OTHER)

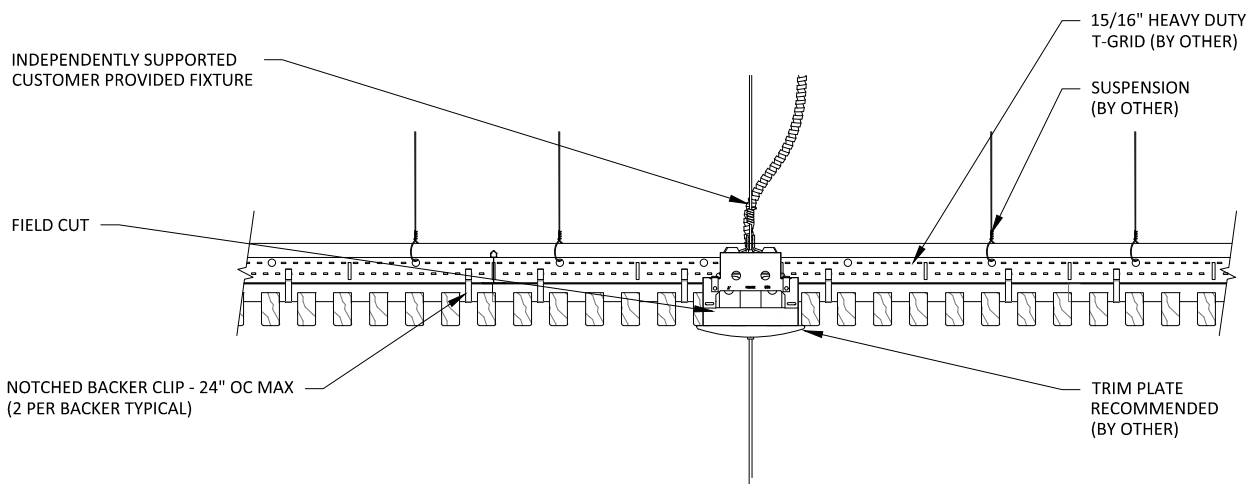
2

CAN LIGHT DETAIL - SECTION VIEW

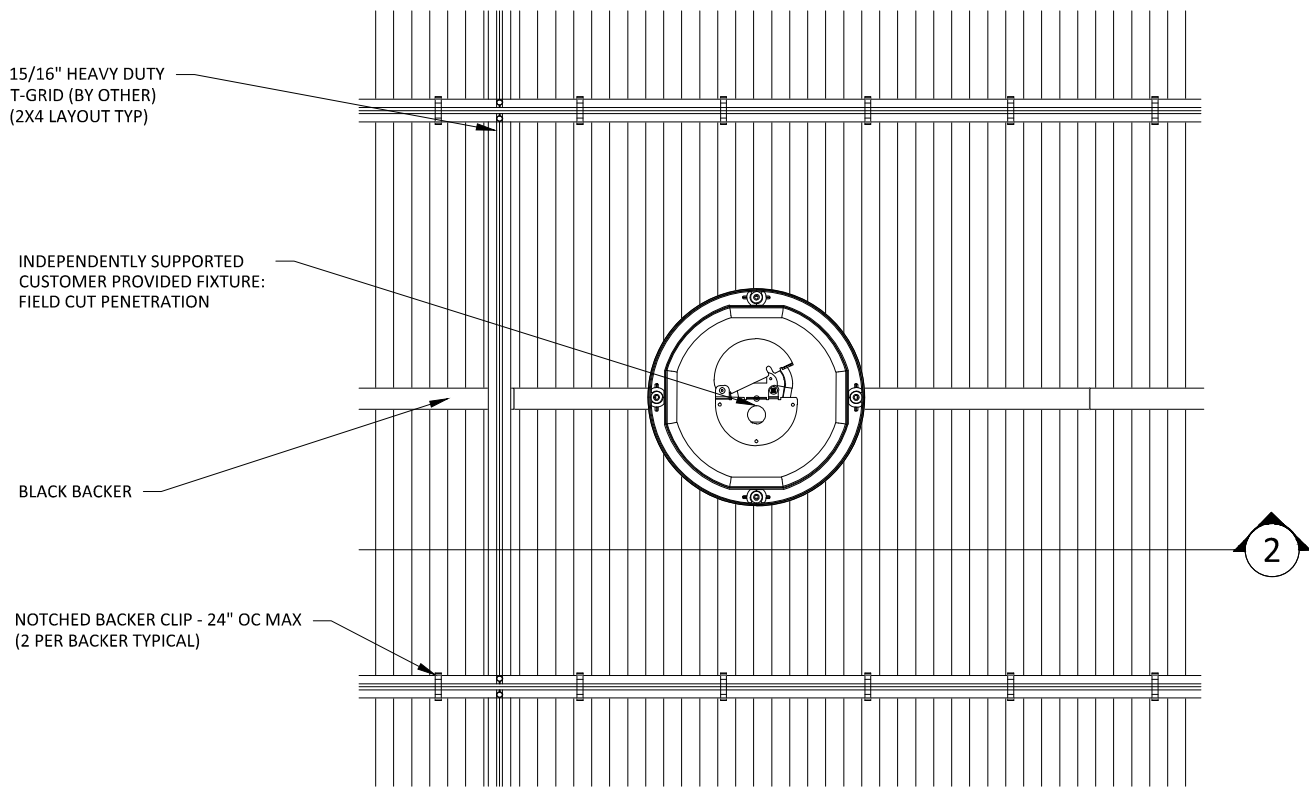
1 1/2" = 1'-0"



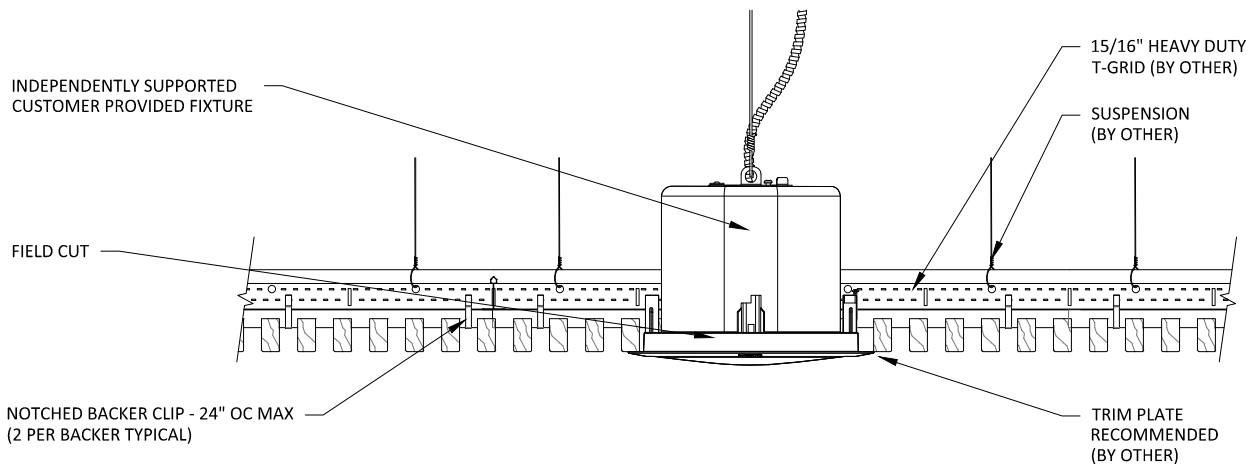
1 PENDANT LIGHT DETAIL - PLAN VIEW
1 1/2" = 1'-0"



2 PENDANT LIGHT DETAIL - SECTION VIEW
1 1/2" = 1'-0"



1 RECESSED SPEAKER DETAIL - PLAN VIEW
1 1/2" = 1'-0"



2 RECESSED SPEAKER DETAIL - SECTION VIEW
1 1/2" = 1'-0"

15/16" HEAVY DUTY
T-GRID (BY OTHER)
(2X4 LAYOUT TYP)

INDEPENDENTLY SUPPORTED
CUSTOMER PROVIDED FIXTURE:
FIELD CUT PENETRATION

BLACK BACKER

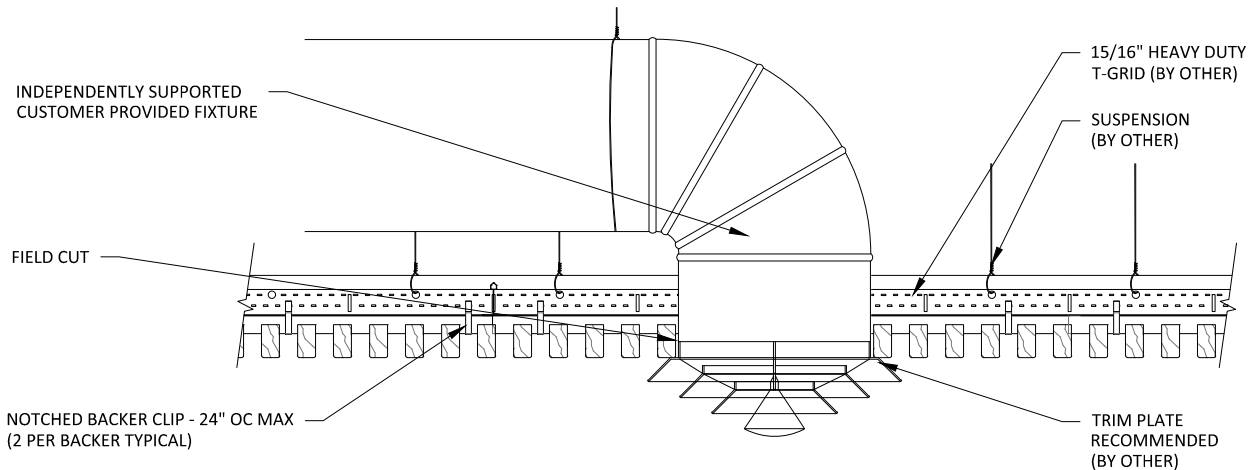
NOTCHED BACKER CLIP - 24" OC MAX
(2 PER BACKER TYPICAL)

2

1

DIFFUSER DETAIL - PLAN VIEW

1 1/2" = 1'-0"



2

DIFFUSER DETAIL - SECTION VIEW

1 1/2" = 1'-0"

GRILLE-NOTCHED (CEILING SYSTEM) - DIFFUSER DETAILS

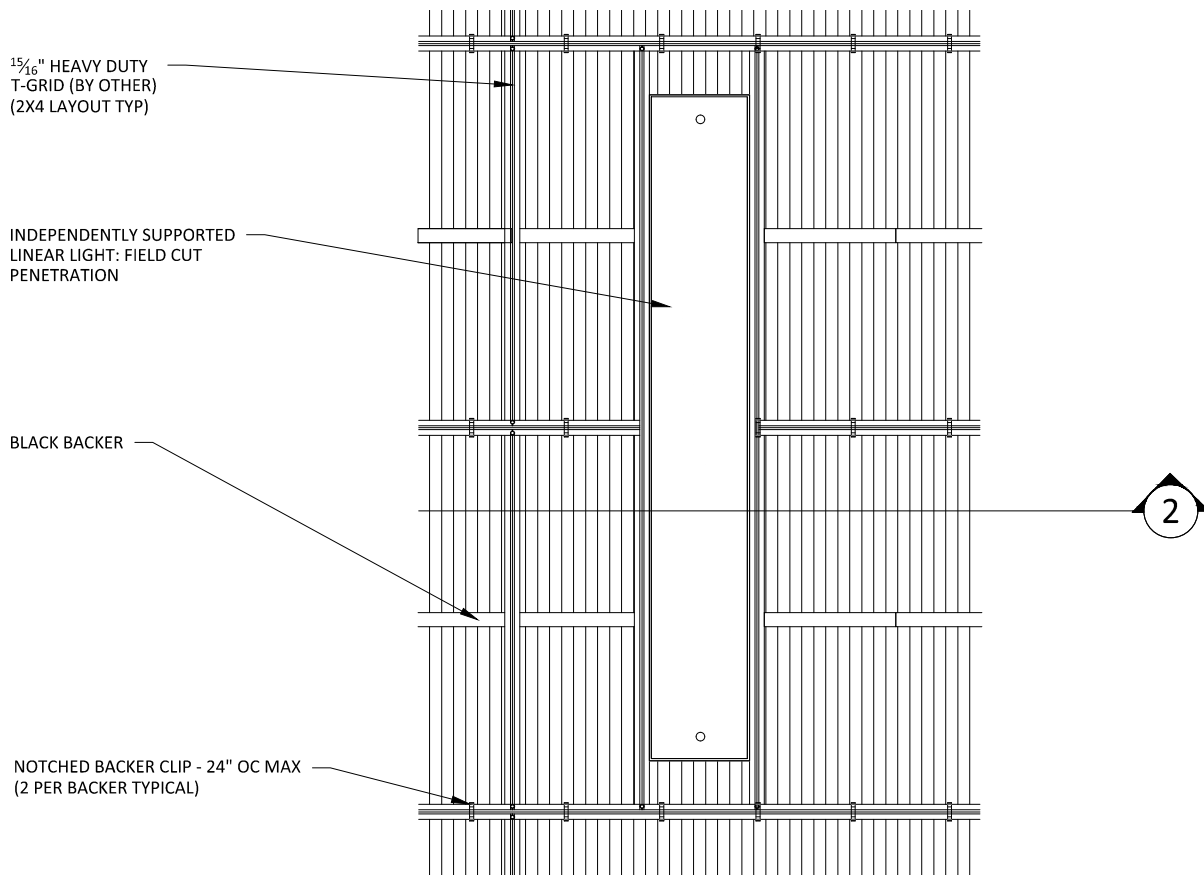
SCALE: AS NOTED

LAST REVISED: 6/29/2023

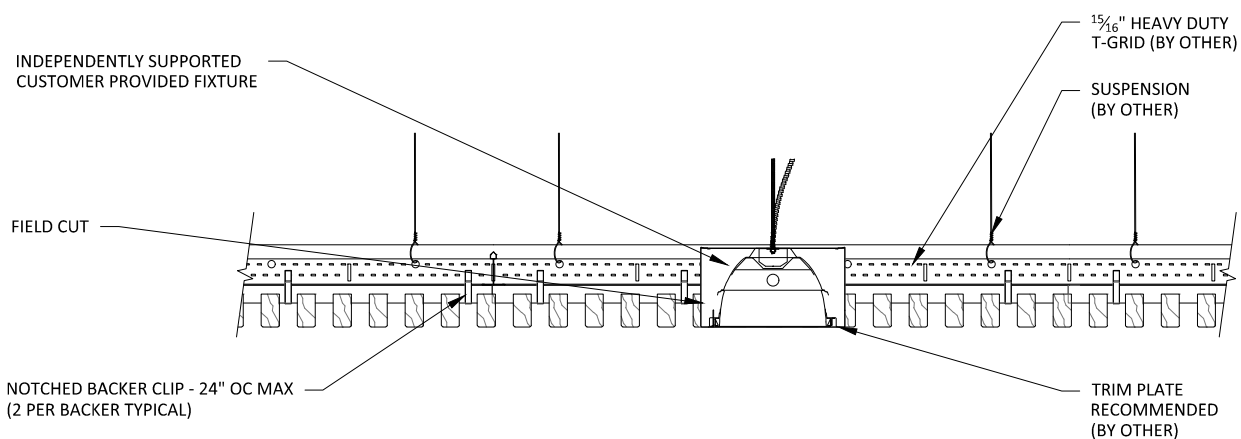
SHEET NUMBER

10

DRAWN BY: BH



1 LINEAR LIGHT DETAIL - PLAN VIEW
1" = 1'-0"



2 LINEAR LIGHT DETAIL - SECTION VIEW
1 1/2" = 1'-0"

1" ACOUSTICAL BACKER
(2" AVAILABLE)

TYP. WALL ASSEMBLY
(BY OTHER)

FURRING (BY OTHER) TO
MATCH ACOUSTICAL BACKER
THICKNESS

NOTCHED BACKER

2" SCREW (BY OTHER)

GRILLE RAIL

1/2" REVEAL FOR
EXPANSION &
CONTRACTION

16 GA. FINISH NAIL (BY OTHER)

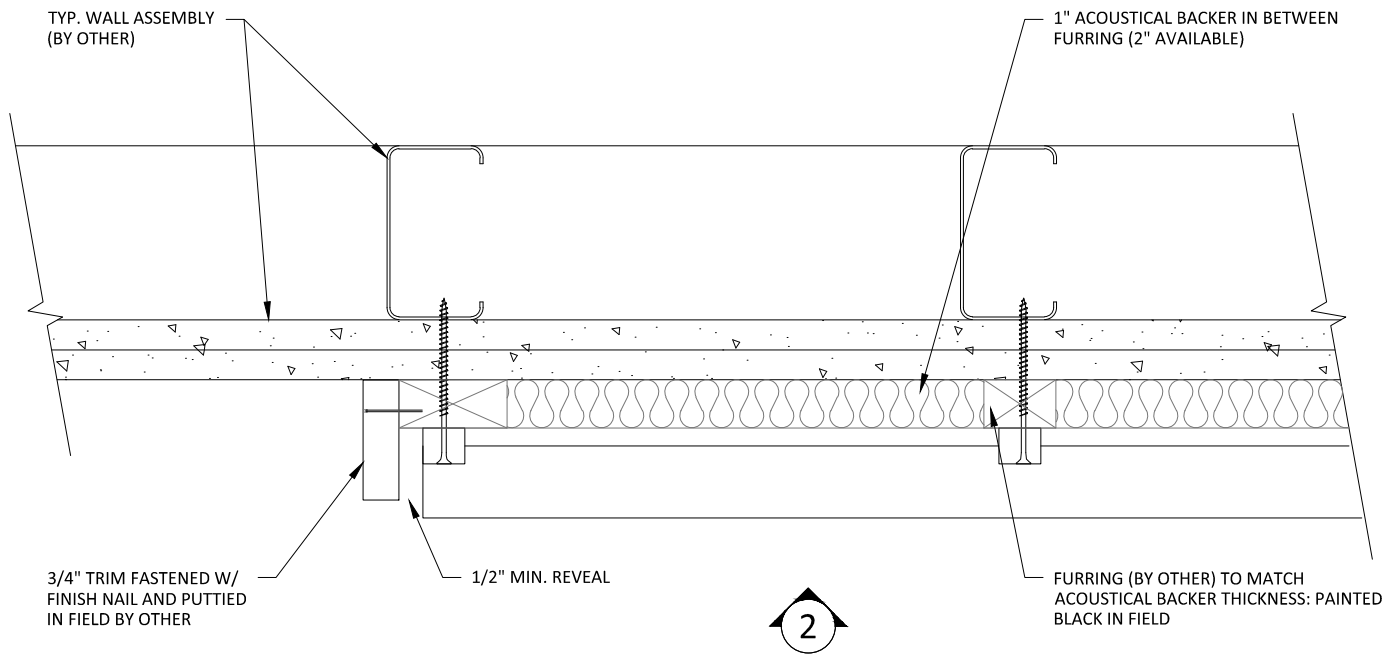
TRIM (OPTIONAL) TO COINCIDE
W/ FURRING THICKNESS; FACE
NAILED & PUTTIED IN FIELD

NOTE: 24" MAXIMUM SCREW/SUPPORT SPACING

1

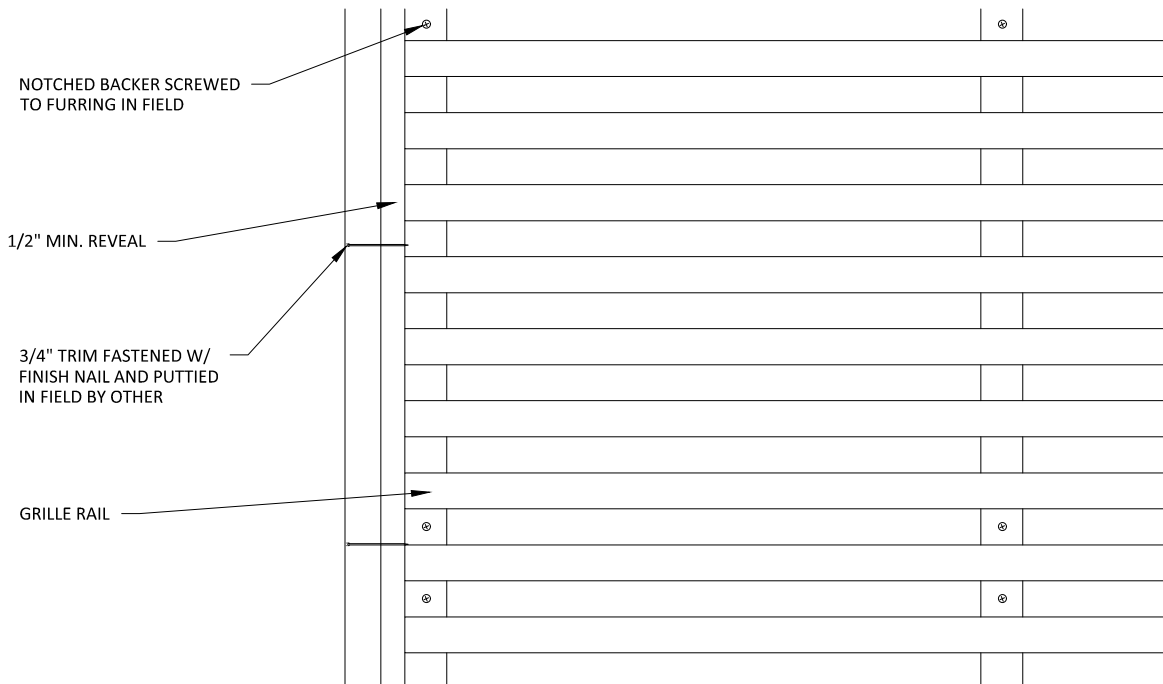
HORIZONTAL WALL ISOMETRIC - TYP.

1 1/2" = 1'-0"



1 HORIZONTAL WALL PLAN @ TRIM

3" = 1'-0"



2 HORIZONTAL WALL ELEVATION @ TRIM

3" = 1'-0"

FURRING (BY OTHER) TO MATCH
ACOUSTICAL BACKER THICKNESS

NOTCHED BACKER SCREWED
TO FURRING IN FIELD

BASE AS SCHEDULED (BY OTHER)

2

1 HORIZONTAL WALL ELEVATION @ BASEBOARD

3" = 1'-0"

1" ACOUSTICAL BACKER (2" AVAILABLE)

NOTCHED BACKER SCREWED
TO FURRING IN FIELD

TYP. WALL SYSTEM (BY OTHER)

BASE AS SCHEDULED (BY OTHER)

2 HORIZONTAL WALL SECTION @ BASEBOARD

3" = 1'-0"

GRILLE-NOTCHED (HORIZONTAL WALL SYSTEM) - BASEBOARD DETAILS

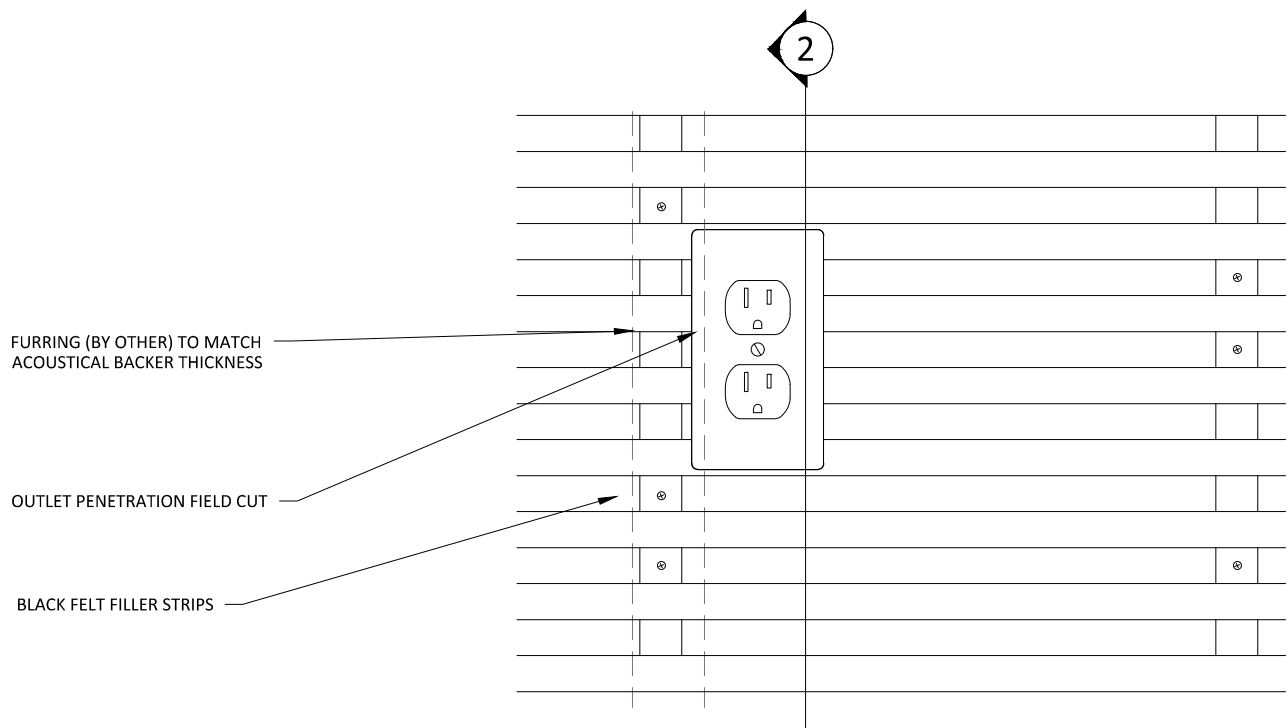
SCALE: AS NOTED

LAST REVISED: 6/29/2023

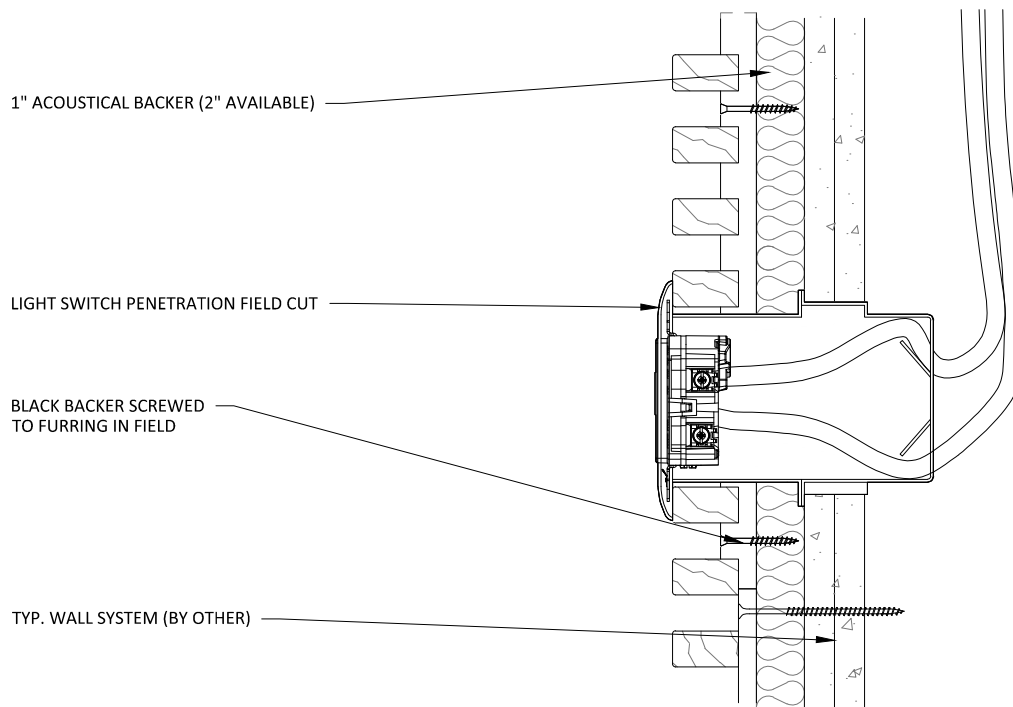
SHEET NUMBER

14

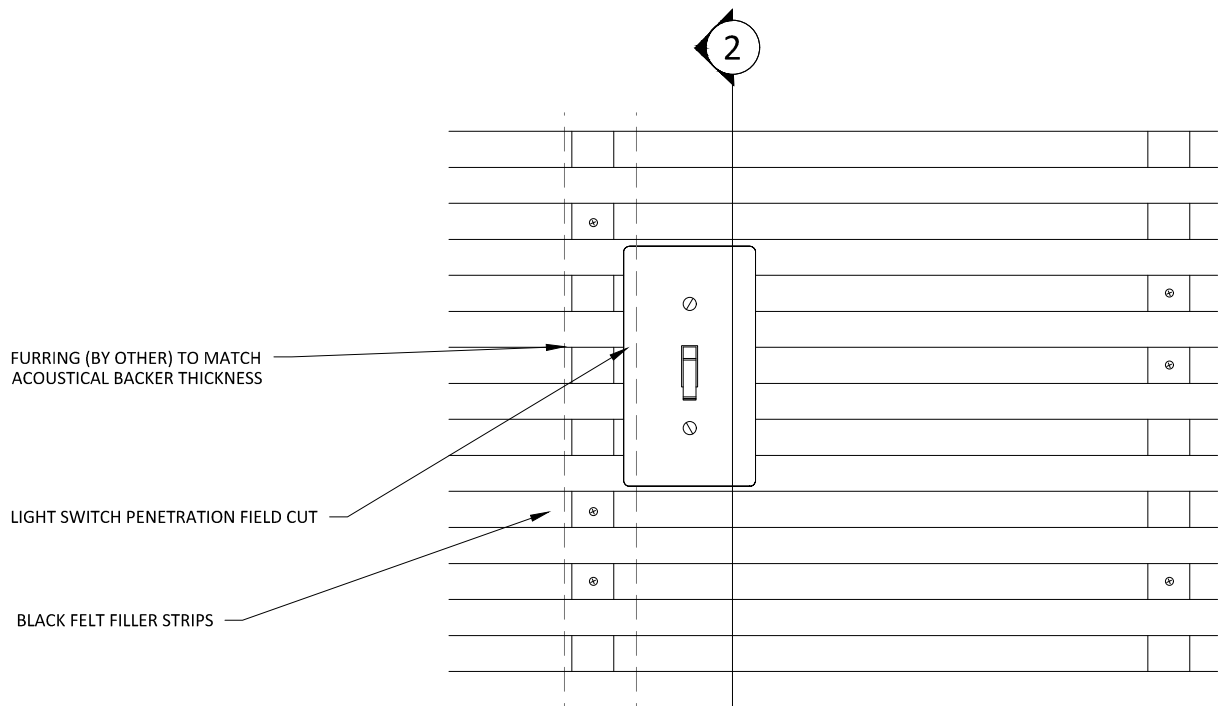
DRAWN BY: BH



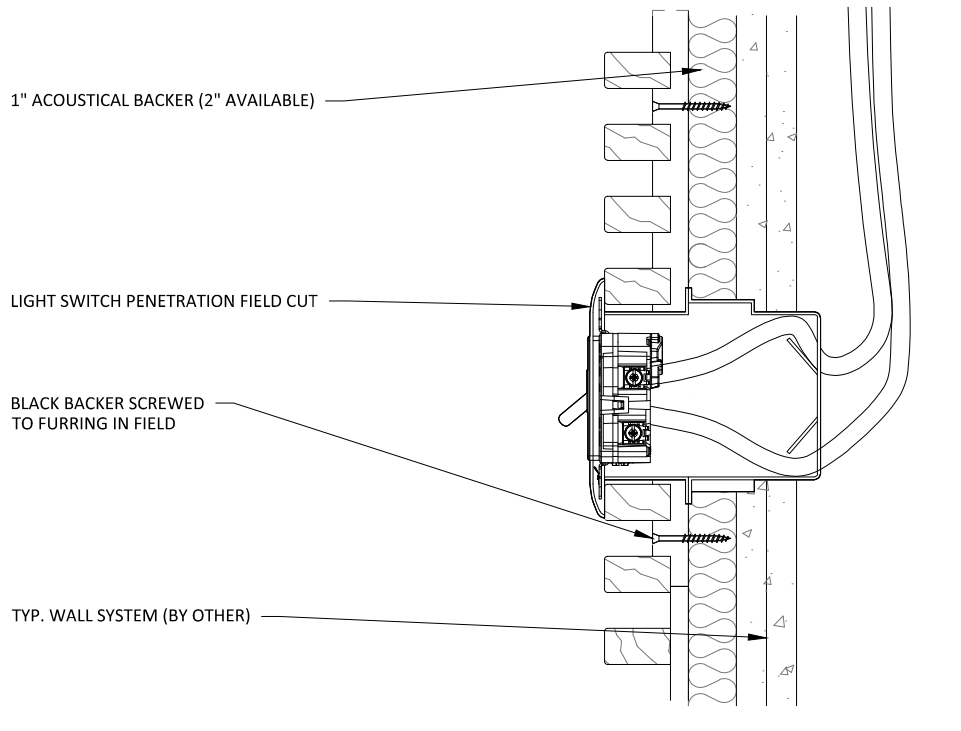
1 HORIZONTAL WALL ELEVATION @ OUTLET
3" = 1'-0"



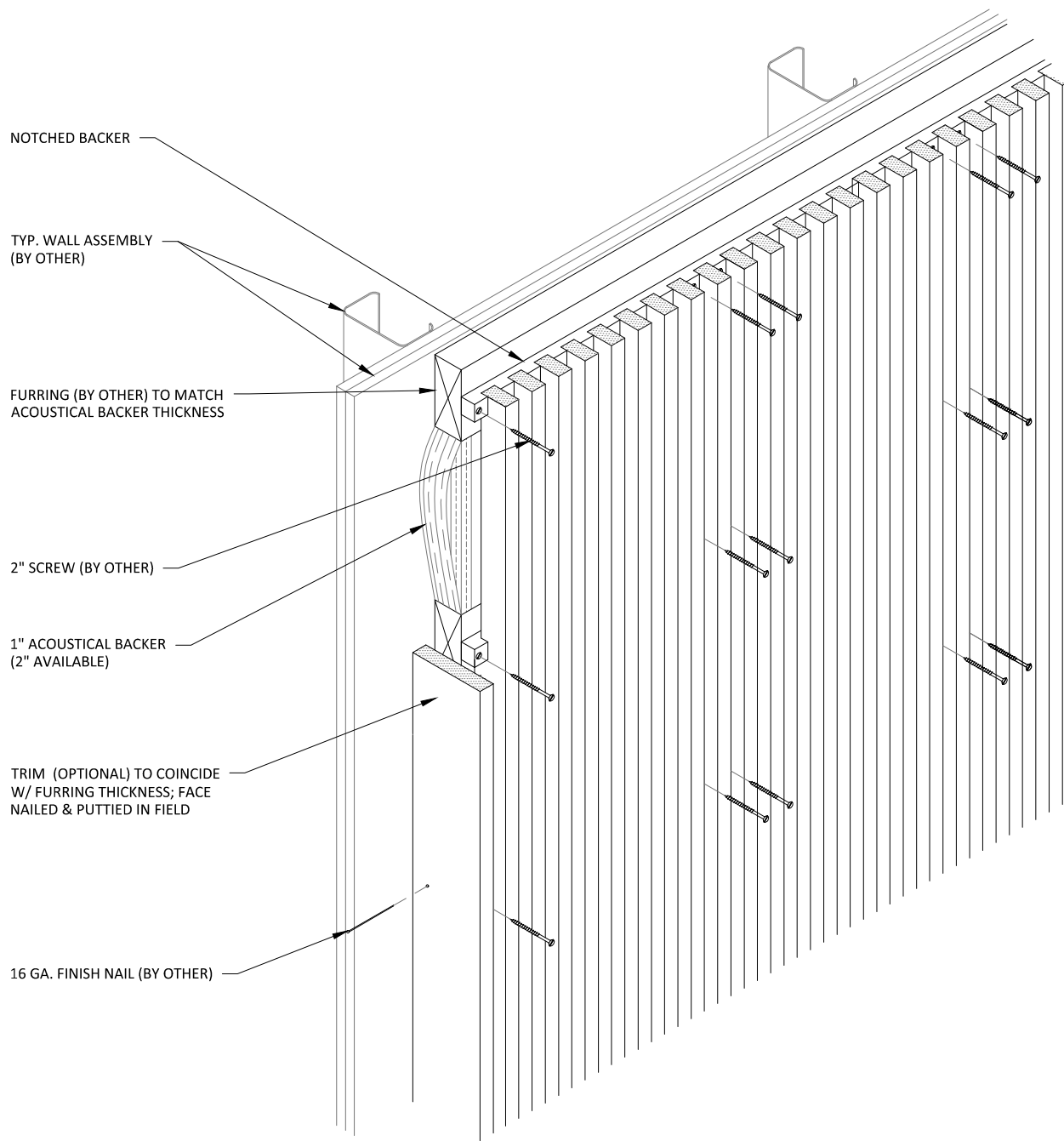
2 HORIZONTAL WALL SECTION @ OUTLET
3" = 1'-0"



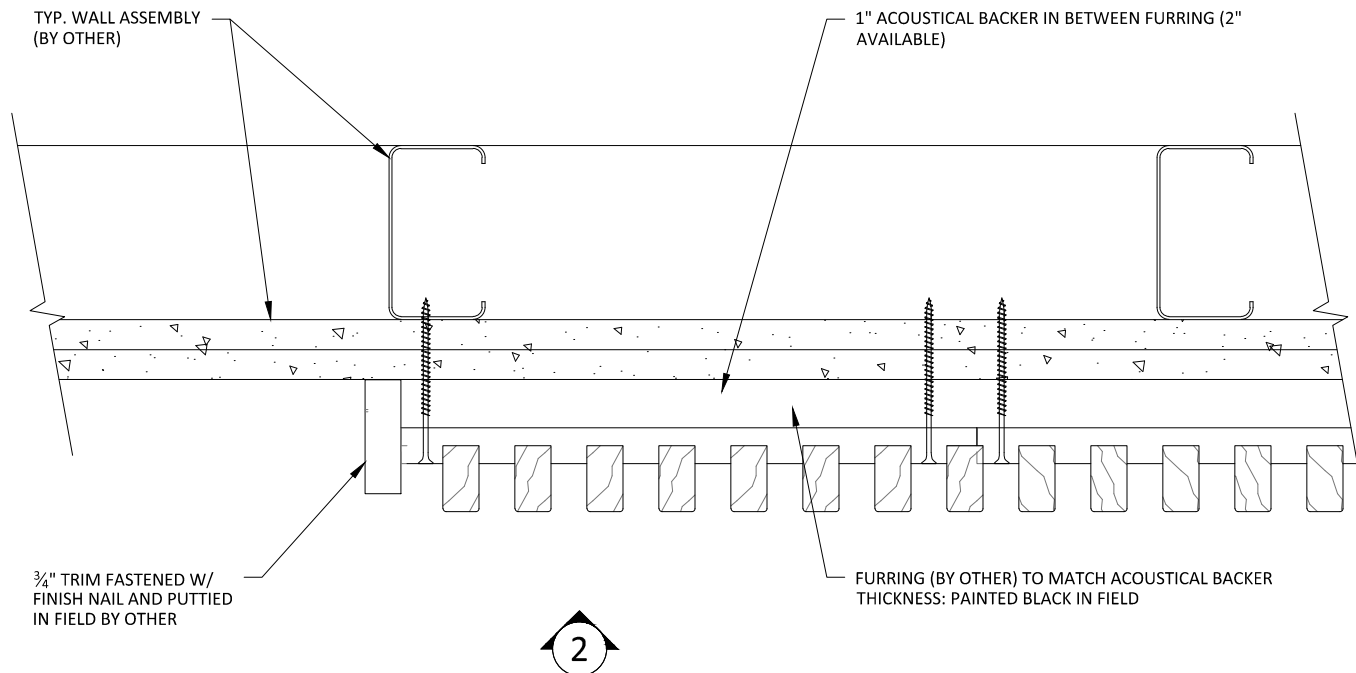
1 HORIZONTAL WALL ELEVATION @ LIGHT SWITCH
3" = 1'-0"



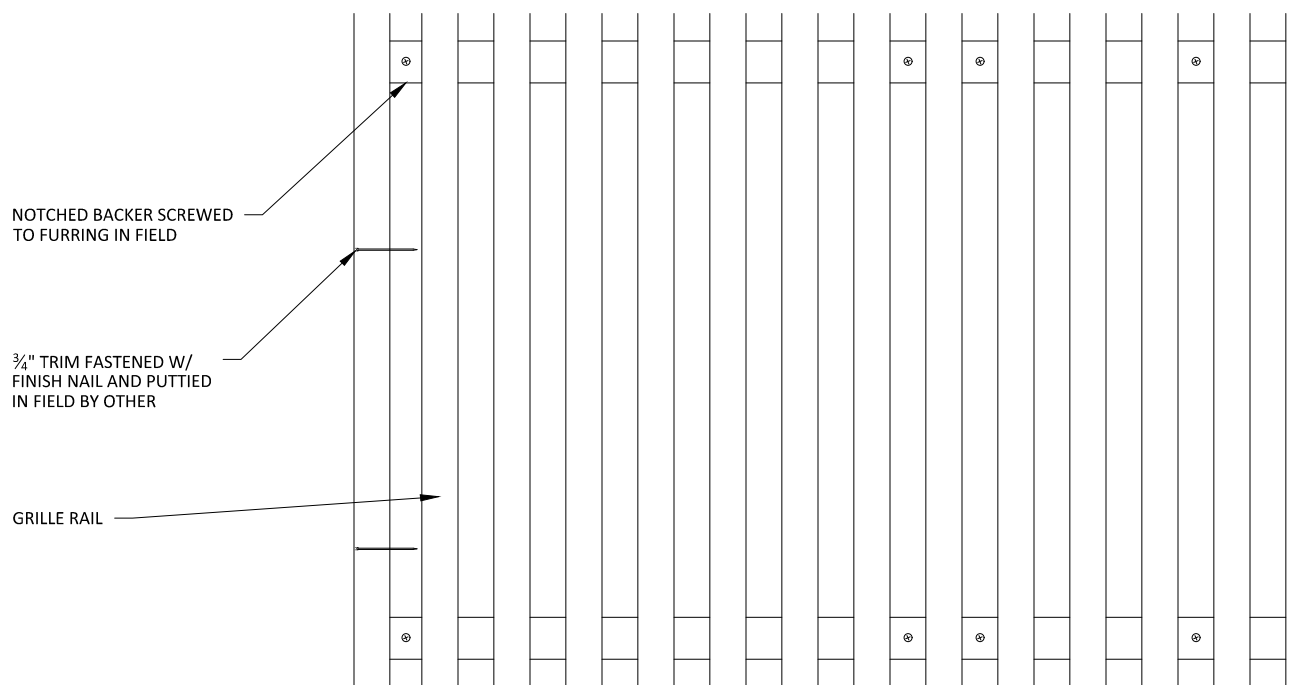
2 HORIZONTAL WALL SECTION @ LIGHT SWITCH
3" = 1'-0"



1 VERTICAL WALL ISOMETRIC - TYP.
 1 1/2" = 1'-0"



1 VERTICAL WALL PLAN @ TRIM
3" = 1'-0"



2 VERTICAL WALL ELEVATION @ TRIM
3" = 1'-0"

FURRING (BY OTHER) TO MATCH
ACOUSTICAL BACKER THICKNESS

NOTCHED BACKER SCREWED
TO FURRING IN FIELD

BASE AS SCHEDULED (BY OTHER)

2

1 VERTICAL WALL ELEVATION @ BASEBOARD

3" = 1'-0"

1" ACOUSTICAL BACKER (2" AVAILABLE)

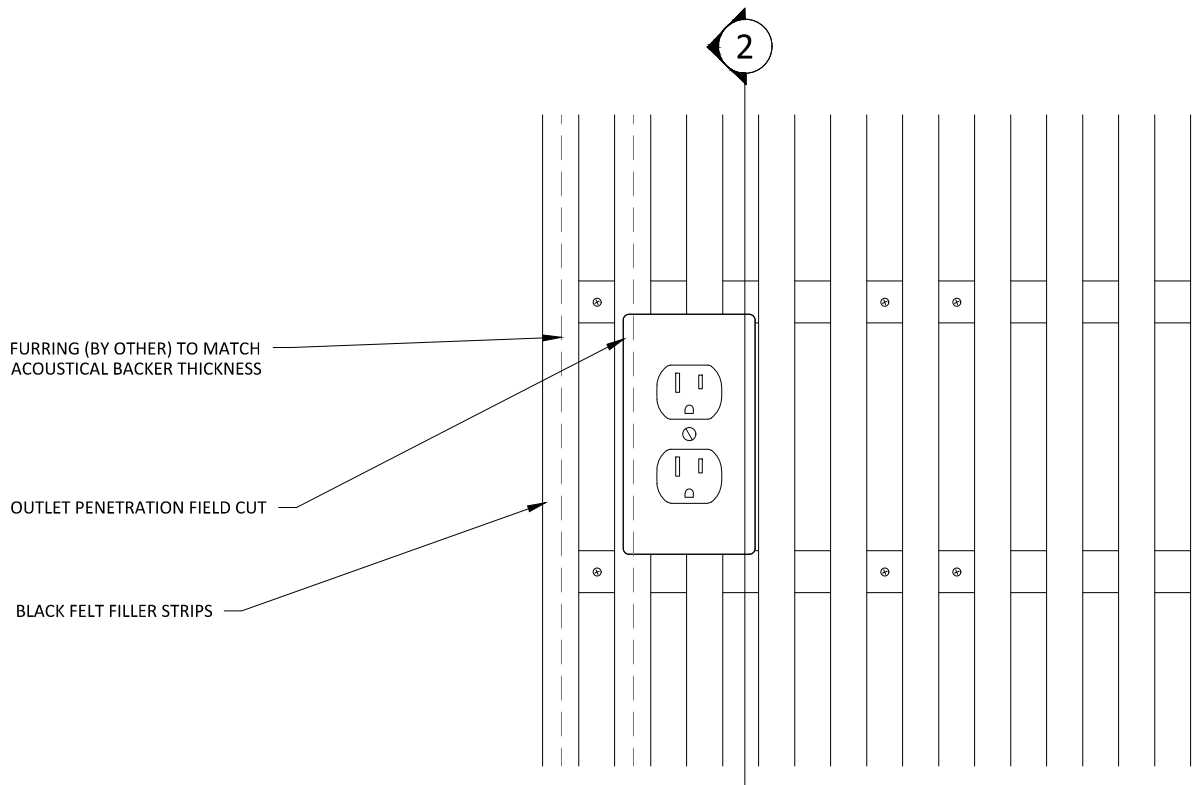
NOTCHED BACKER SCREWED
TO FURRING IN FIELD

TYP. WALL SYSTEM (BY OTHER)

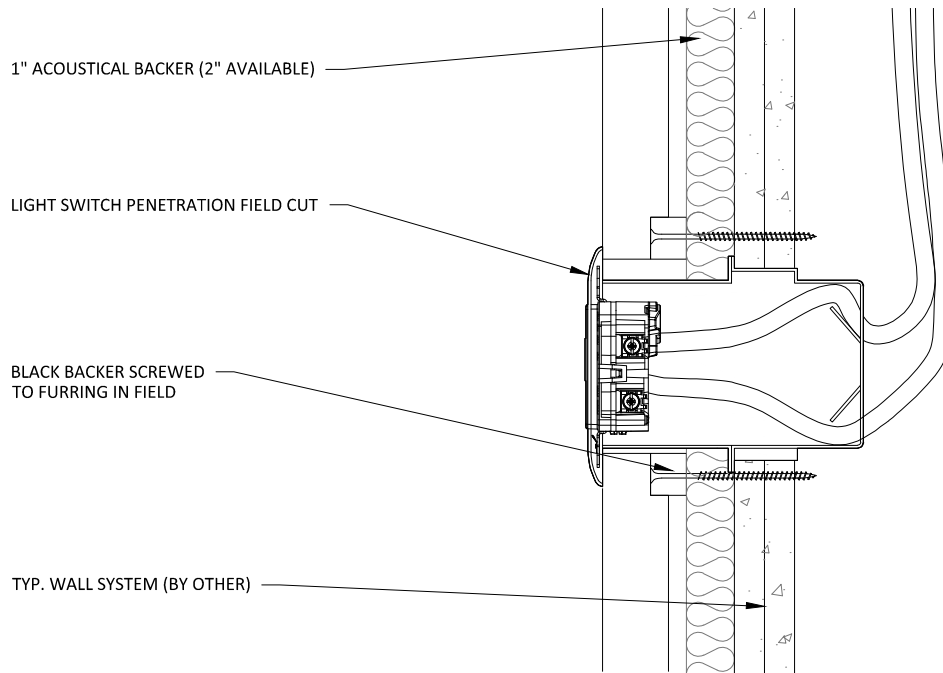
BASE AS SCHEDULED (BY OTHER)

2 VERTICAL WALL SECTION @ BASEBOARD

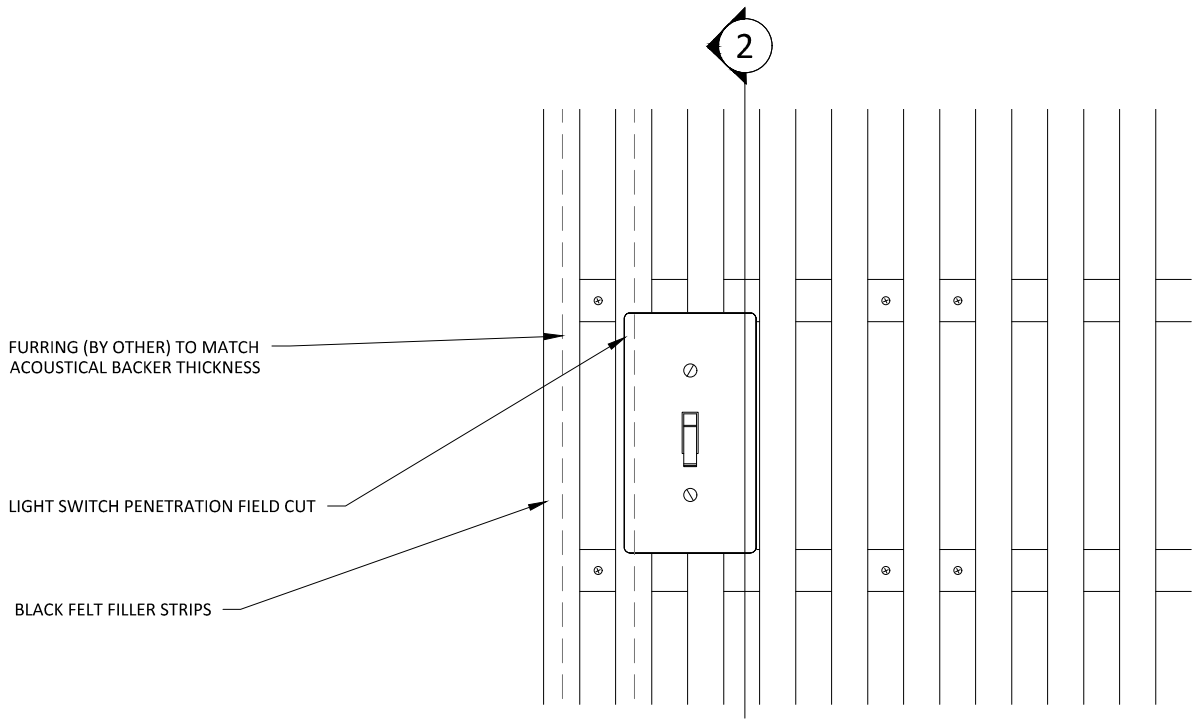
3" = 1'-0"



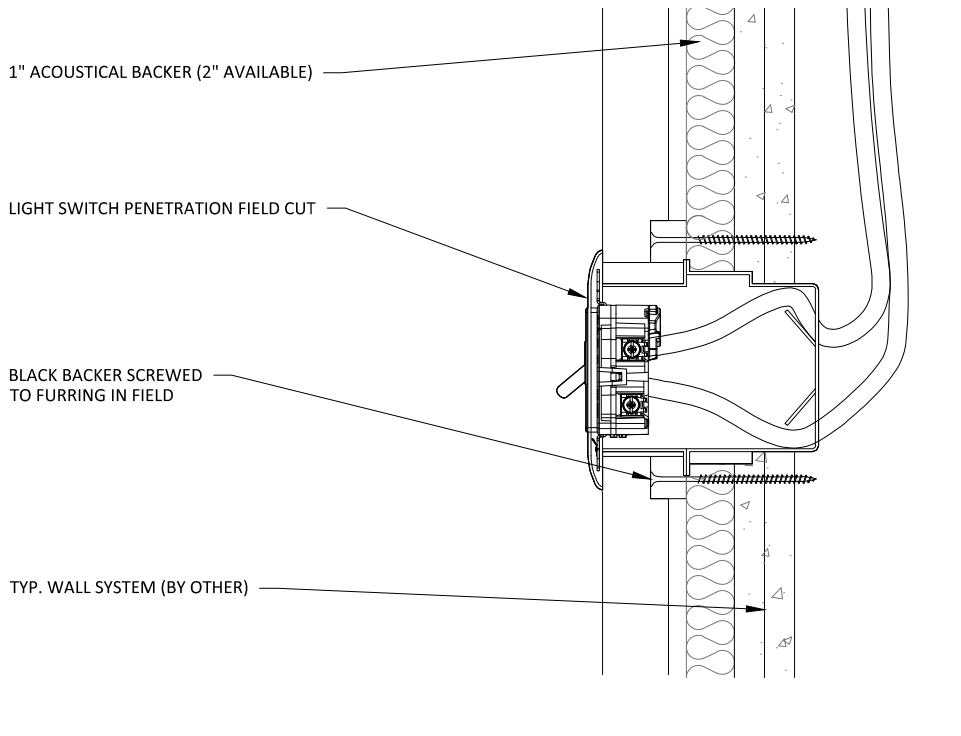
1 VERTICAL WALL ELEVATION @ OUTLET
3" = 1'-0"



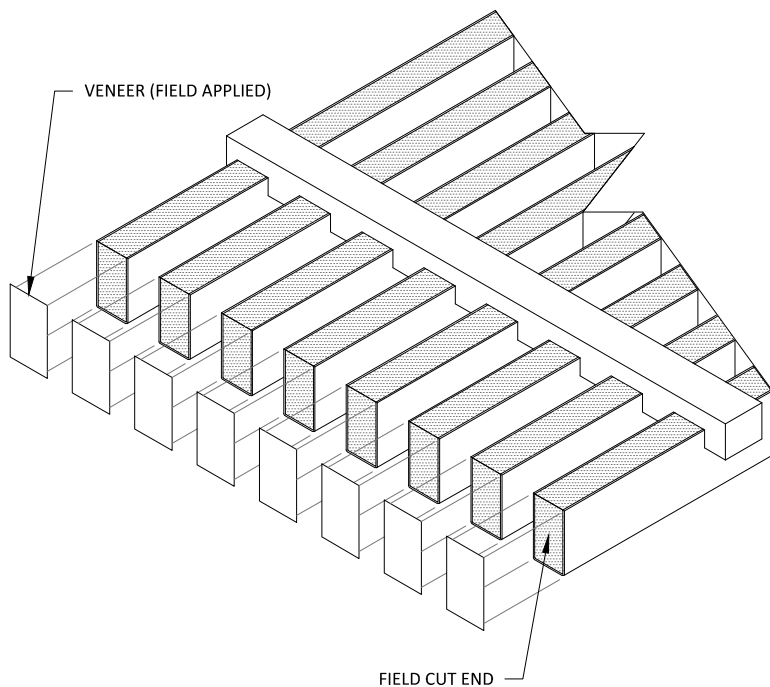
2 VERTICAL WALL SECTION @ OUTLET
3" = 1'-0"



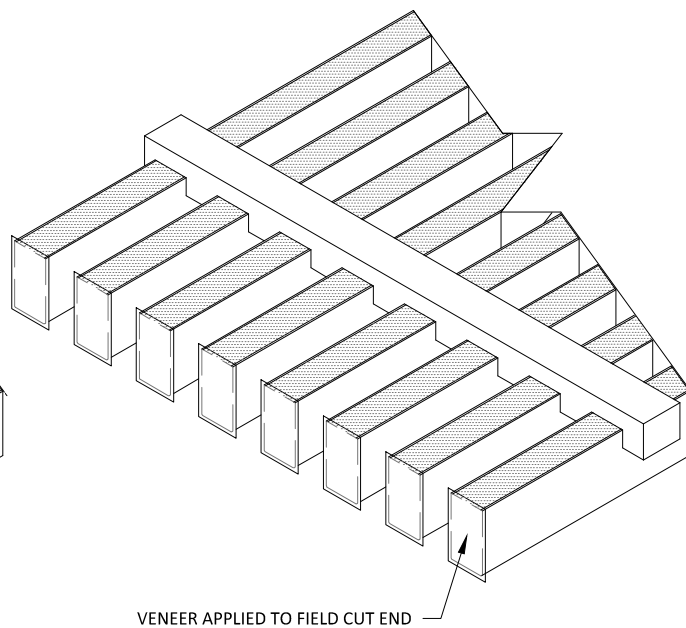
1 VERTICAL WALL ELEVATION @ LIGHT SWITCH
3" = 1'-0"



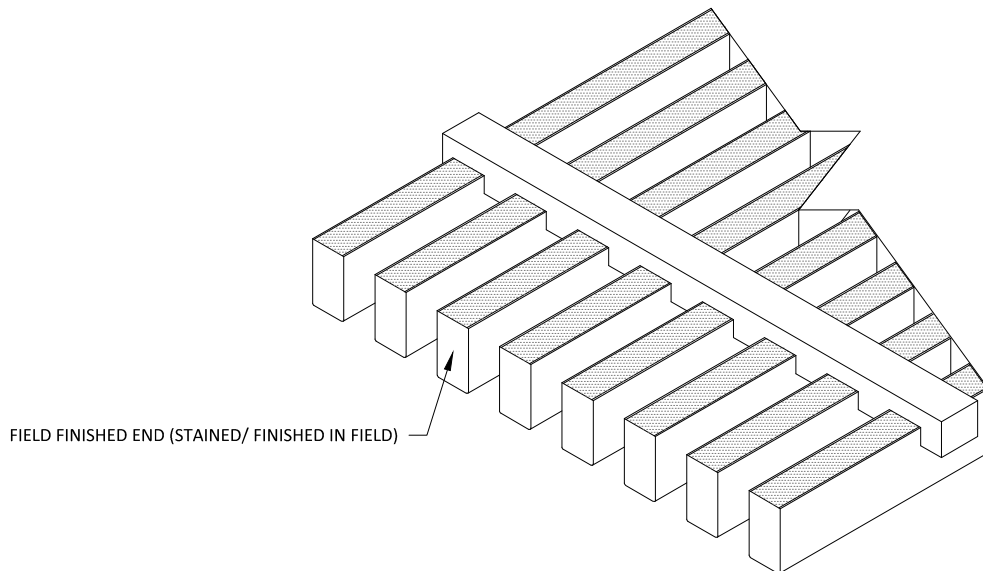
2 VERTICAL WALL SECTION @ LIGHT SWITCH
3" = 1'-0"



1 STEP 1
3" = 1'-0"

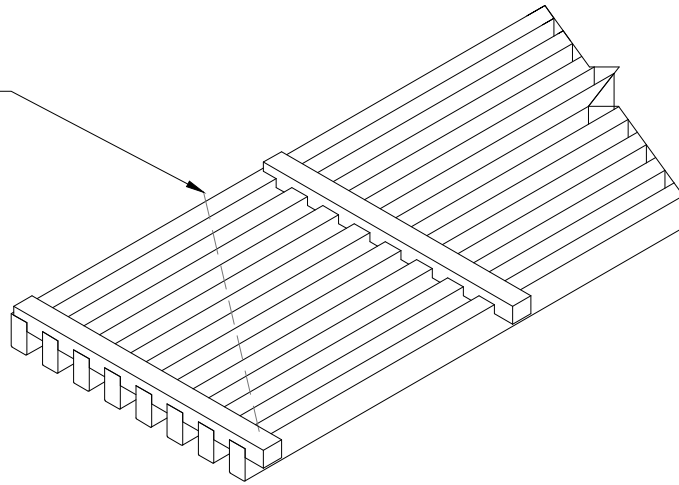


2 STEP 2
3" = 1'-0"



3 STEP 3
3" = 1'-0"

DESIRED FIELD CUT ANGLE

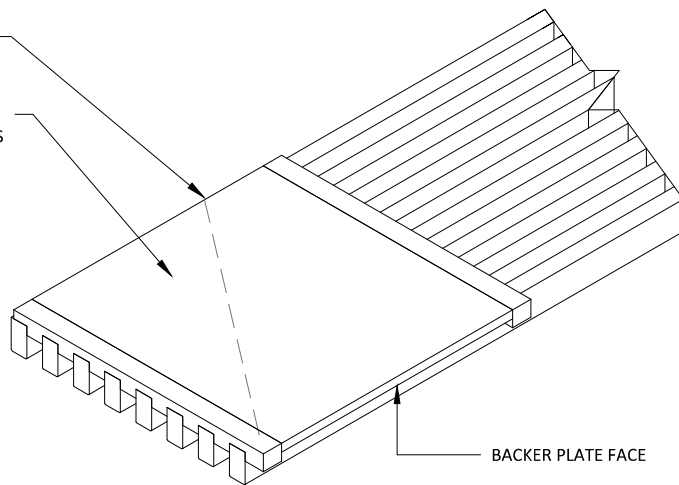


1 ANGLE-CUT STEP 1

1 1/2" = 1'-0"

DESIRED FIELD CUT ANGLE

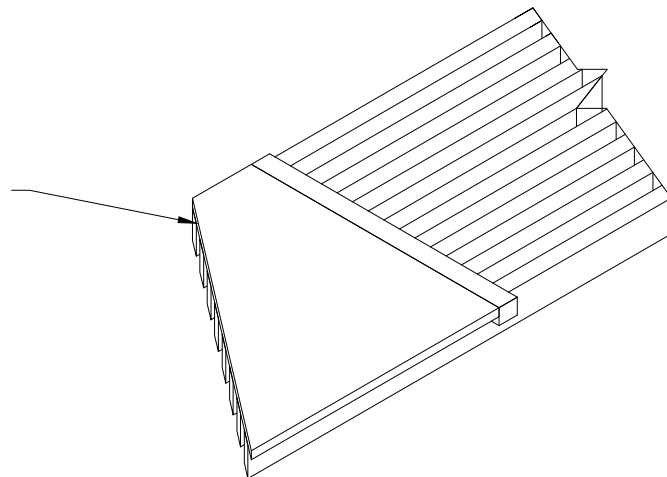
STAPLE 3/8" THICK PLYWOOD BACKER PLATE (BY OTHER) TO GRILLE RAILS. BACKER PLATE IS TO BE PAINTED BLACK ON FACE.



2 ANGLE-CUT STEP 2

1 1/2" = 1'-0"

ONCE BACKER PLATE IS FASTENED TO GRILLE PANEL, CUT DESIRED LINE AND FINISH ENDS AS SHOWN IN THE FIELD FINISHED END INSTRUCTIONS IN THIS STANDARD DETAIL SET



3 ANGLE-CUT STEP 3

1 1/2" = 1'-0"

GRILLE-NOTCHED SYSTEM - ANGLE CUT INSTRUCTIONS

SCALE: AS NOTED

LAST REVISED: 6/29/2023

SHEET NUMBER

23

DRAWN BY: BH