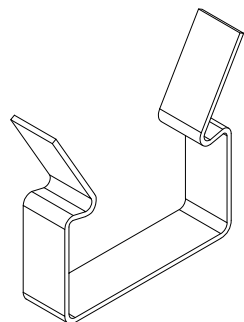
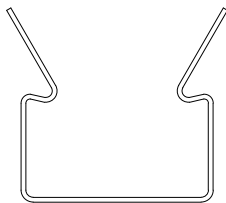


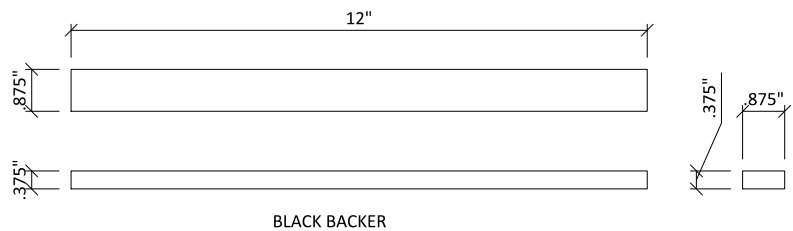
1 GRILLE-BACKERED SECTION DETAIL
3" = 1'-0"



ISOMETRIC



ELEVATION



BLACK BACKER

2 BACKER CLIP
1' = 1'-0"

3 12 INCH BACKER
3" = 1'-0"

**GRILLE-BACKERED (CEILING SYSTEM)
- SECTION DETAILS & HARDWARE**

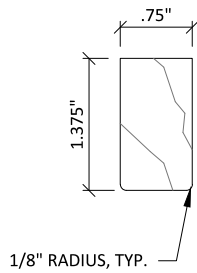
SCALE: AS NOTED

LAST REVISED: 6/29/2023

SHEET NUMBER

1

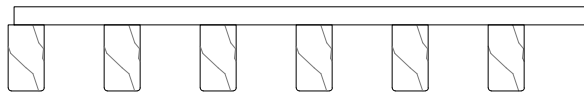
DRAWN BY: BMH



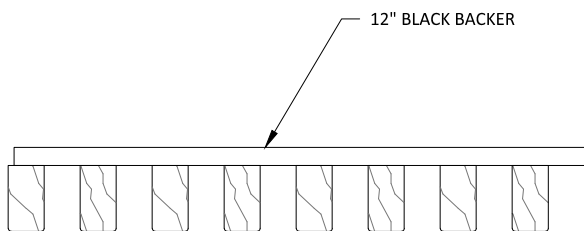
CUSTOM PROFILES AVAILABLE UPON REQUEST

1 TYPICAL RAIL PROFILES

6" = 1'-0"



3/4" X 1 3/8" RAILS
6 RAIL/FT.
2" SPACING O.C.



3/4" X 1 3/8" RAILS
8 RAIL/FT.
1 1/2" SPACING O.C.

2 TYPICAL 12 INCH GRILLE MODULES

3" = 1'-0"

GRILLE-BACKERED SYSTEM - TYPICAL HARDWOOD PROFILE OPTIONS

SCALE: AS NOTED

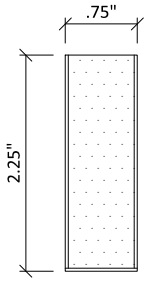
LAST REVISED: 6/29/2023

SHEET NUMBER

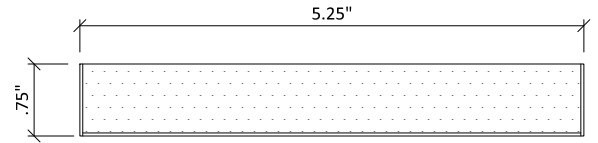
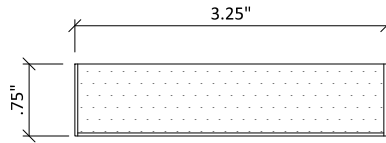
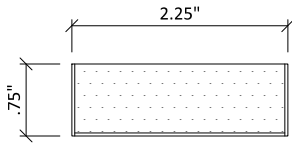
2

DRAWN BY: BMH

CUSTOM PROFILES AVAILABLE
UPON REQUEST

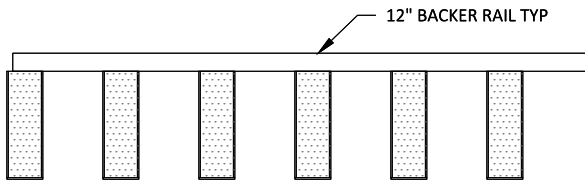


STANDARD RAIL SIZE OPTIONS					
WIDTH	3/4	3/4	2 1/4	3 1/4	5 1/4
HEIGHT	2 1/4	1 3/8	3/4	3/4	3/4

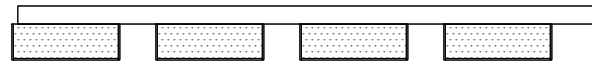


1 TYPICAL VENEERED PROFILES

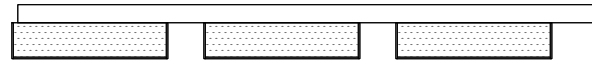
6" = 1'-0"



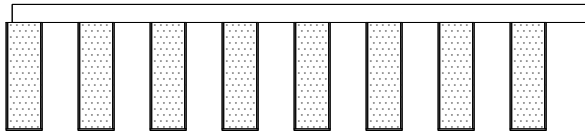
3/4" X 2 1/4" RAILS
6 RAIL/FT.
2" SPACING O.C.



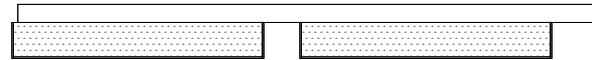
2 1/4" X 3/4" RAILS
4 RAIL/FT.
3" SPACING O.C.



3 1/4" X 3/4" RAILS
3 RAIL/FT.
4" SPACING O.C.



3/4" X 2 1/4" RAILS
8 RAIL/FT.
1 1/2" SPACING O.C.



5 1/4" X 3/4" RAILS
2 RAIL/FT.
6" SPACING O.C.

2 TYPICAL 12 INCH VENEERED MODULES

3" = 1'-0"

GRILLE-BACKERED SYSTEM - TYPICAL VENEERED PROFILE OPTIONS

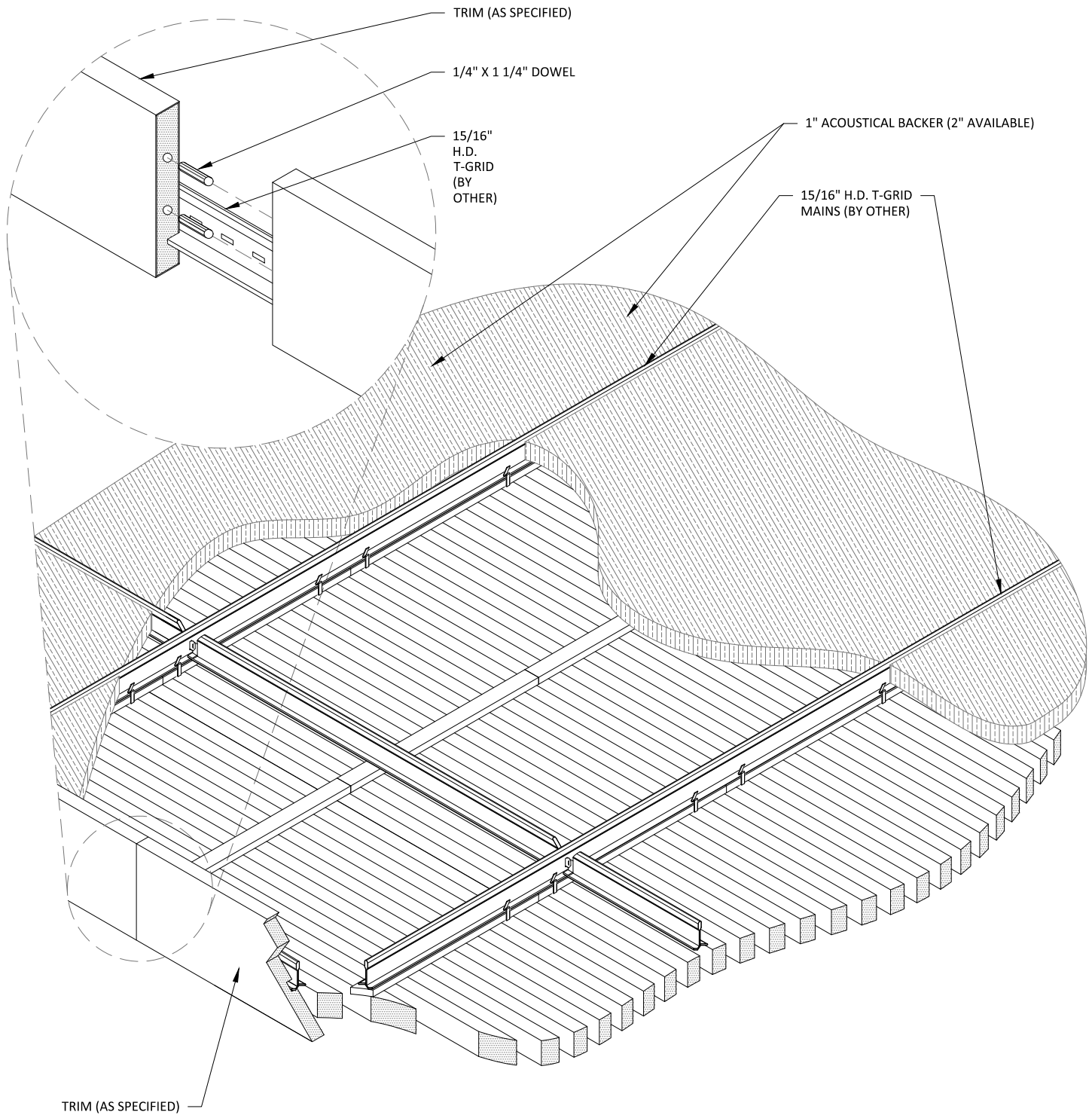
SCALE: AS NOTED

LAST REVISED: 6/29/2023

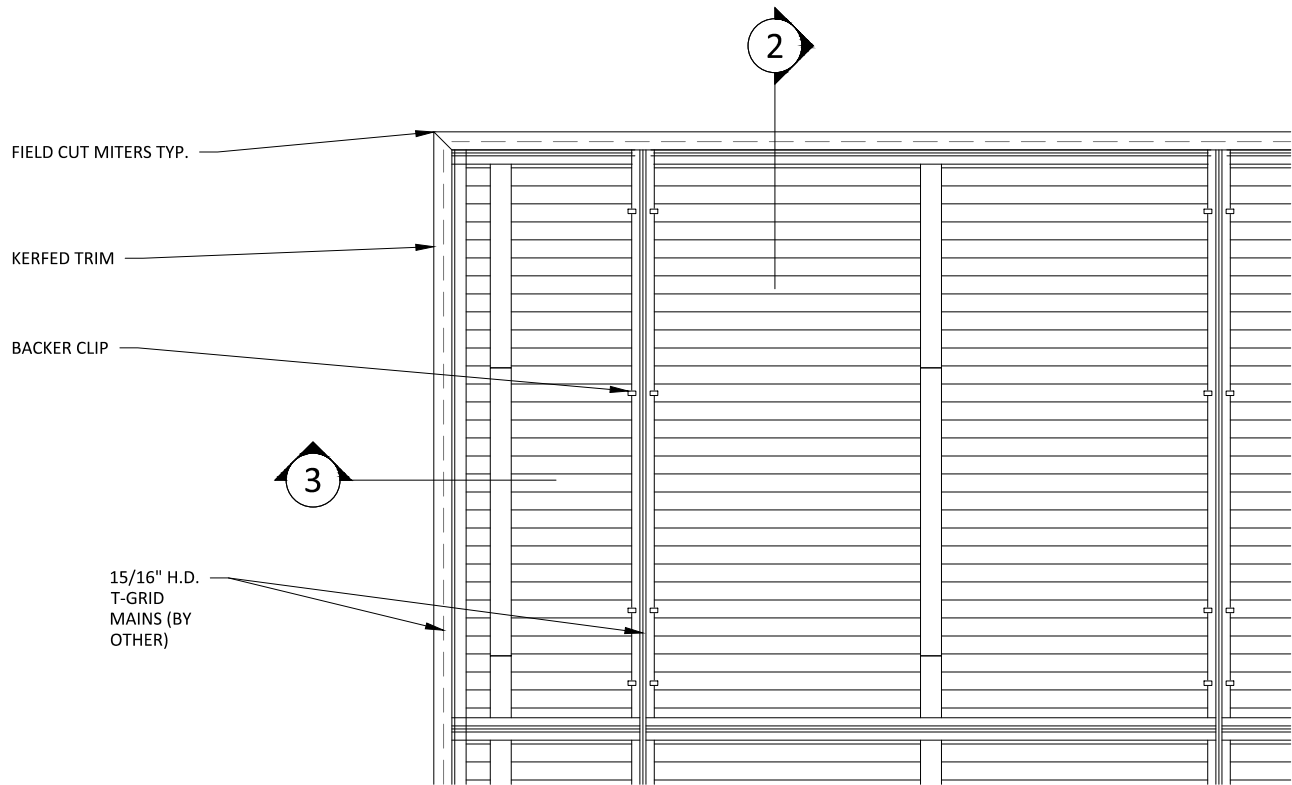
SHEET NUMBER

3

DRAWN BY: BMH

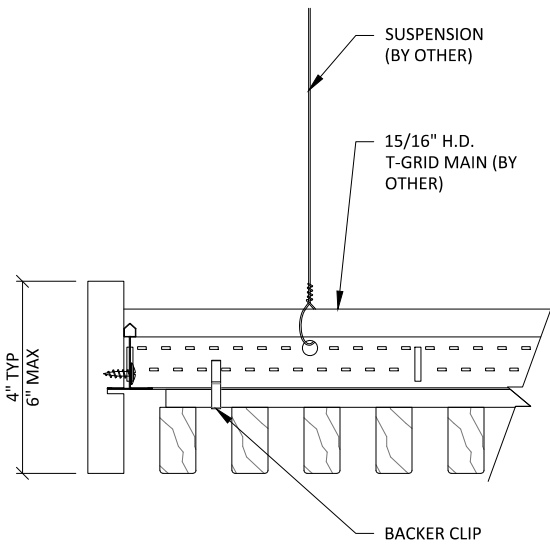


1 CEILING ISOMETRIC - TYP.
1 1/2" = 1'-0"

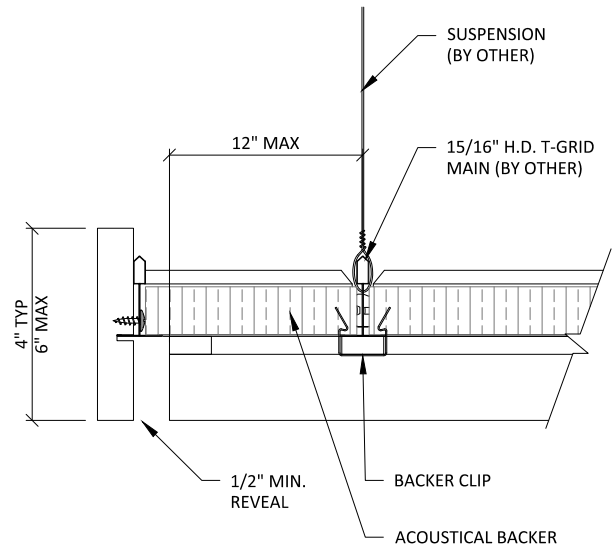


1 TRIM @ MITERED CORNER - PLAN
1 1/2" = 1'-0"

** ALL FIELD CUTS TO ALLOW FOR 1/4" MIN REVEAL FOR EXPANSION & CONTRACTION

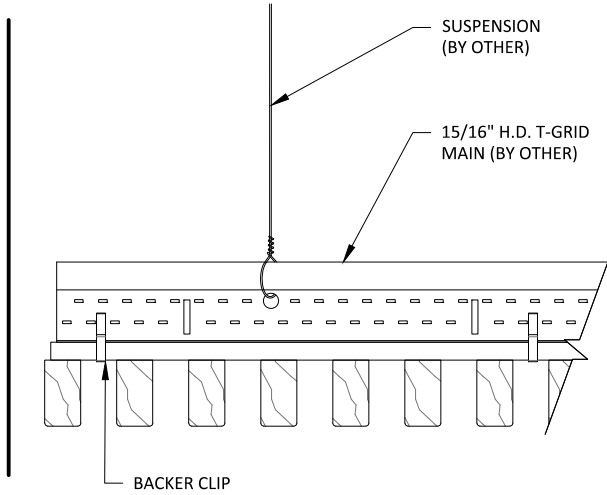


2 TRIM DETAIL 1
3" = 1'-0"

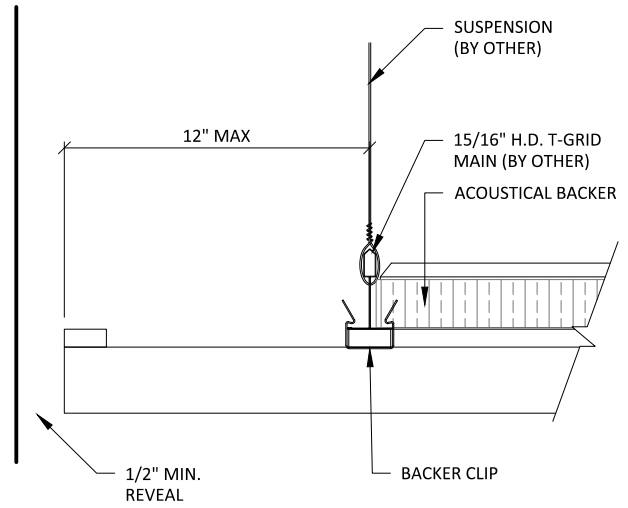


3 TRIM DETAIL 2
3" = 1'-0"

** ALL FIELD CUTS TO ALLOW FOR 1/4" MIN REVEAL FOR EXPANSION & CONTRACTION

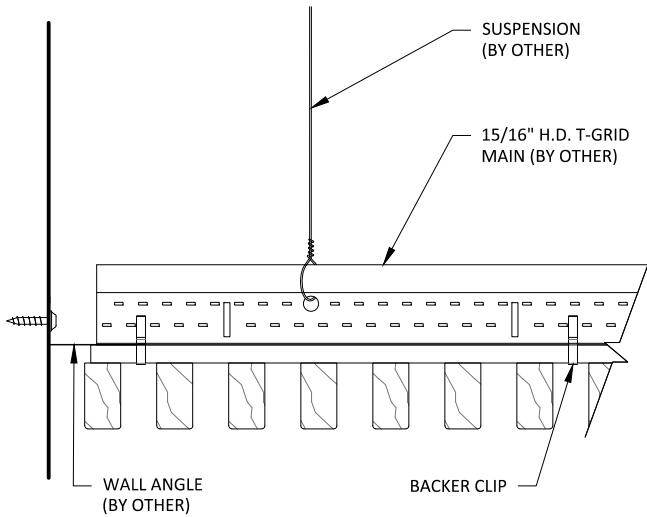


1 EDGE DETAIL 1
3" = 1'-0"

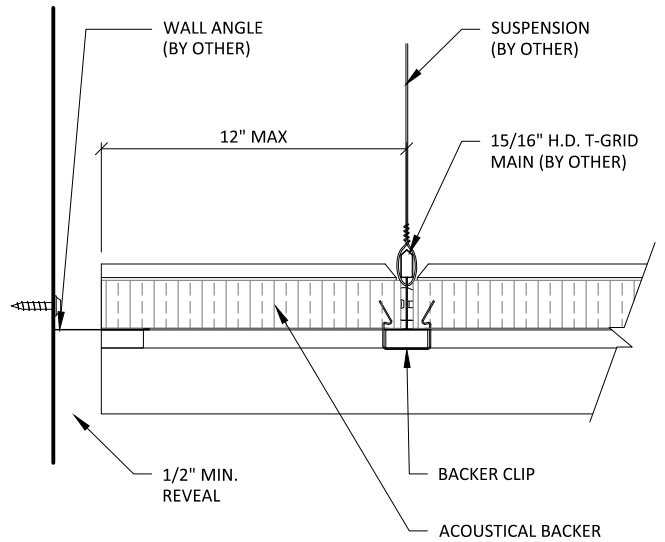


2 EDGE DETAIL 2
3" = 1'-0"

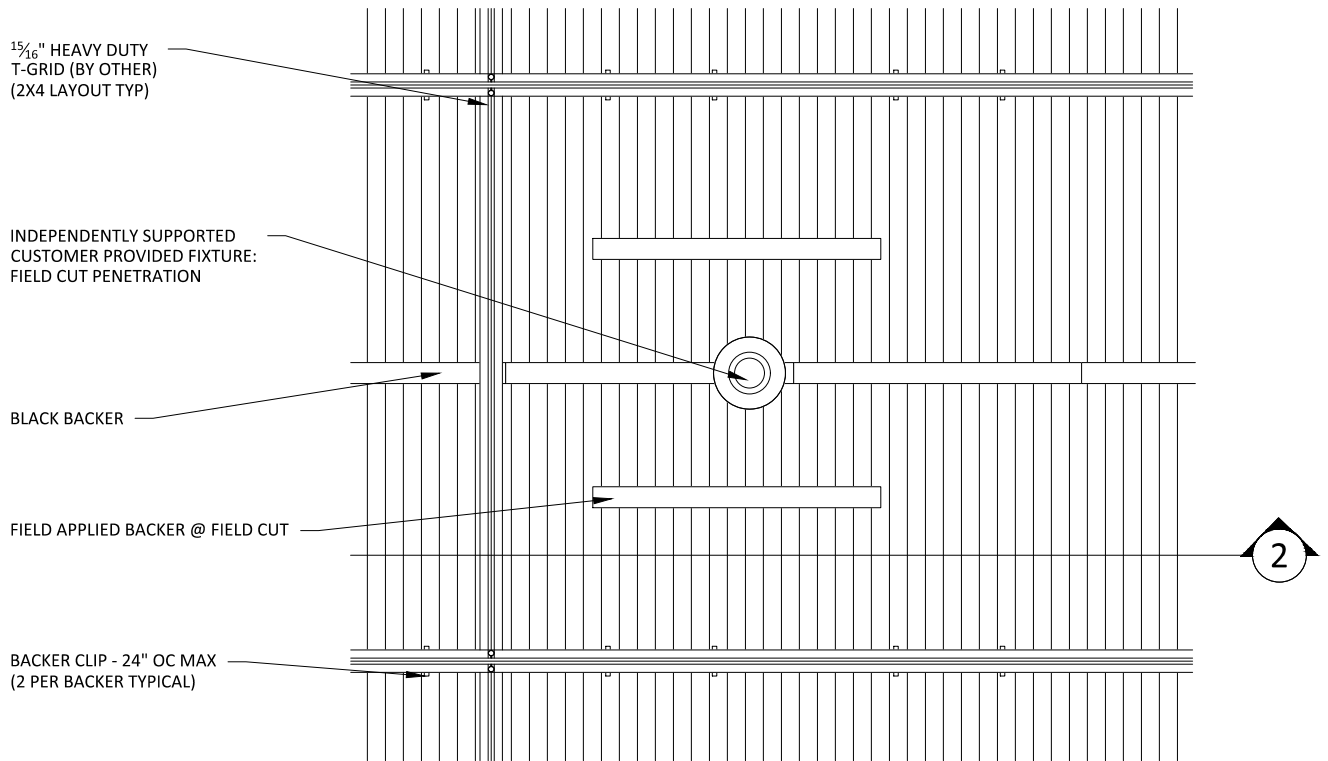
** ALL FIELD CUTS TO ALLOW FOR 1/4" MIN REVEAL FOR EXPANSION & CONTRACTION



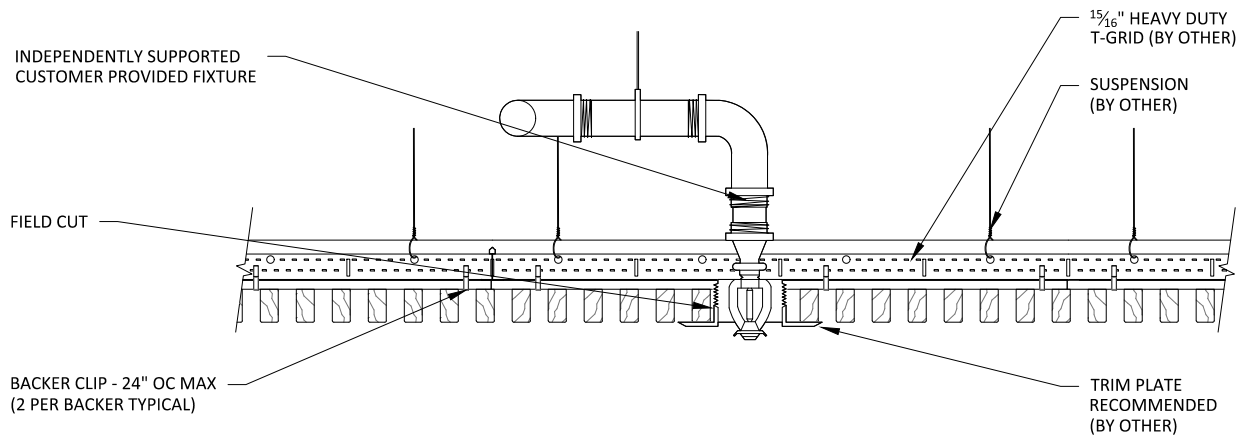
3 EDGE DETAIL 3
3" = 1'-0"



4 EDGE DETAIL 4
3" = 1'-0"



1 SPRINKLER HEAD DETAIL - PLAN VIEW
1 1/2" = 1'-0"



2 SPRINKLER HEAD DETAIL - SECTION VIEW
1 1/2" = 1'-0"

15/16" HEAVY DUTY
T-GRID (BY OTHER)
(2X4 LAYOUT TYP)

INDEPENDENTLY SUPPORTED
CUSTOMER PROVIDED FIXTURE:
FIELD CUT PENETRATION

BLACK BACKER

FIELD APPLIED BACKER @ FIELD CUT

BACKER CLIP - 24" OC MAX
(2 PER BACKER TYPICAL)

2

1 CAN LIGHT DETAIL - PLAN VIEW

1 1/2" = 1'-0"

INDEPENDENTLY SUPPORTED
CUSTOMER PROVIDED FIXTURE

FIELD CUT

BACKER CLIP - 24" OC MAX
(2 PER BACKER TYPICAL)

15/16" HEAVY DUTY
T-GRID (BY OTHER)

SUSPENSION
(BY OTHER)

TRIM PLATE
RECOMMENDED
(BY OTHER)

2 CAN LIGHT DETAIL - SECTION VIEW

1 1/2" = 1'-0"

15/16" HEAVY DUTY
T-GRID (BY OTHER)
(2X4 LAYOUT TYP)

INDEPENDENTLY SUPPORTED
CUSTOMER PROVIDED FIXTURE:
FIELD CUT PENETRATION

BLACK BACKER

FIELD APPLIED BACKER @ FIELD CUT

BACKER CLIP - 24" OC MAX
(2 PER BACKER TYPICAL)

BLA
TO I

FURRI
ACOUST

LIGHT SWIT

1" ACOUST

LIGHT SWIT

BLA
TO I
2

TYP. W

1 PENDANT LIGHT DETAIL - PLAN VIEW
1 1/2" = 1'-0"

INDEPENDENTLY SUPPORTED
CUSTOMER PROVIDED FIXTURE

FIELD CUT

BACKER CLIP - 24" OC MAX
(2 PER BACKER TYPICAL)

15/16" HEAVY DUTY
T-GRID (BY OTHER)

SUSPENSION
(BY OTHER)

TRIM PLATE
RECOMMENDED
(BY OTHER)

1/

TYI

BL
TO

1/2"

2 PENDANT LIGHT DETAIL - SECTION VIEW
1 1/2" = 1'-0"

GRILLE-BACKERED (CEILING SYSTEM) - PENDANT LIGHT DETAILS

SCALE: AS NOTED

LAST REVISED: 6/29/2023

SHEET NUMBER

9

DRAWN BY: BMH

15/16" HEAVY DUTY
T-GRID (BY OTHER)
(2X4 LAYOUT TYP)

INDEPENDENTLY SUPPORTED
CUSTOMER PROVIDED FIXTURE:
FIELD CUT PENETRATION

BLACK BACKER

FIELD APPLIED BACKER @ FIELD CUT

BACKER CLIP - 24" OC MAX
(2 PER BACKER TYPICAL)

2

1

RECESSED SPEAKER DETAIL - PLAN VIEW

1 1/2" = 1'-0"

INDEPENDENTLY SUPPORTED
CUSTOMER PROVIDED FIXTURE

FIELD CUT

BACKER CLIP - 24" OC MAX
(2 PER BACKER TYPICAL)

15/16" HEAVY DUTY
T-GRID (BY OTHER)

SUSPENSION
(BY OTHER)

TRIM PLATE
RECOMMENDED
(BY OTHER)

2

RECESSED SPEAKER DETAIL - SECTION VIEW

1 1/2" = 1'-0"

GRILLE-BACKERED (CEILING SYSTEM) - RECESSED SPEAKER DETAILS

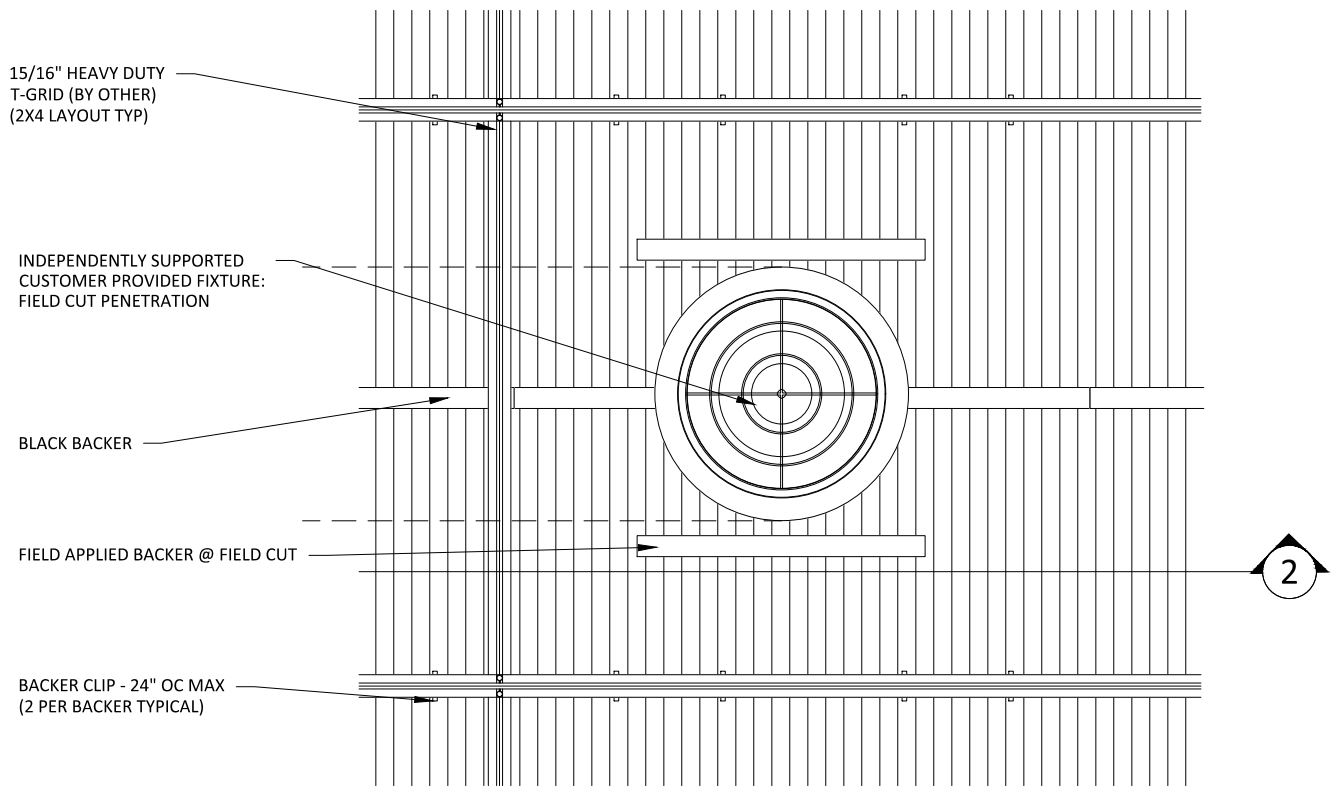
SCALE: AS NOTED

LAST REVISED: 6/29/2023

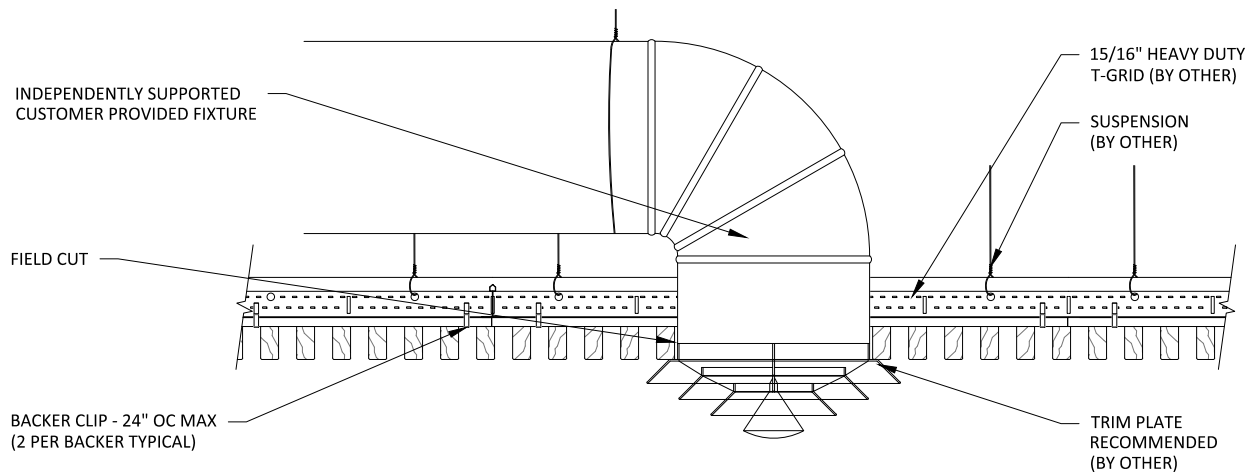
SHEET NUMBER

10

DRAWN BY: BMH



1 DIFFUSER DETAIL - PLAN VIEW
1 1/2" = 1'-0"



2 DIFFUSER DETAIL - SECTION VIEW
1 1/2" = 1'-0"

15/16" HEAVY DUTY
T-GRID (BY OTHER)
(2x4 LAYOUT TYP)

INDEPENDENTLY SUPPORTED
LINEAR LIGHT: FIELD CUT
PENETRATION

STUB-IN GRID AS NECESSARY

BLACK BACKER

BACKER CLIP - 24" OC MAX
(2 PER BACKER TYPICAL)

2

1

LINEAR LIGHT DETAIL - PLAN VIEW

1" = 1'-0"

INDEPENDENTLY SUPPORTED
CUSTOMER PROVIDED FIXTURE

FIELD CUT

BACKER CLIP - 24" OC MAX
(2 PER BACKER TYPICAL)

15/16" HEAVY DUTY
T-GRID (BY OTHER)

SUSPENSION
(BY OTHER)

TRIM PLATE
RECOMMENDED
(BY OTHER)

2

LINEAR LIGHT DETAIL - SECTION VIEW

1 1/2" = 1'-0"

GRILLE-BACKERED (CEILING SYSTEM) - LINEAR LIGHT DETAILS

SCALE: AS NOTED

LAST REVISED: 6/29/2023

SHEET NUMBER

12

DRAWN BY: BMH

1" ACOUSTICAL BACKER
(2" AVAILABLE)

TYP. WALL ASSEMBLY
(BY OTHER)

FURRING (BY OTHER) TO MATCH
ACOUSTICAL BACKER THICKNESS

BLACK BACKER

2" SCREW (BY OTHER)

GRILLE RAIL

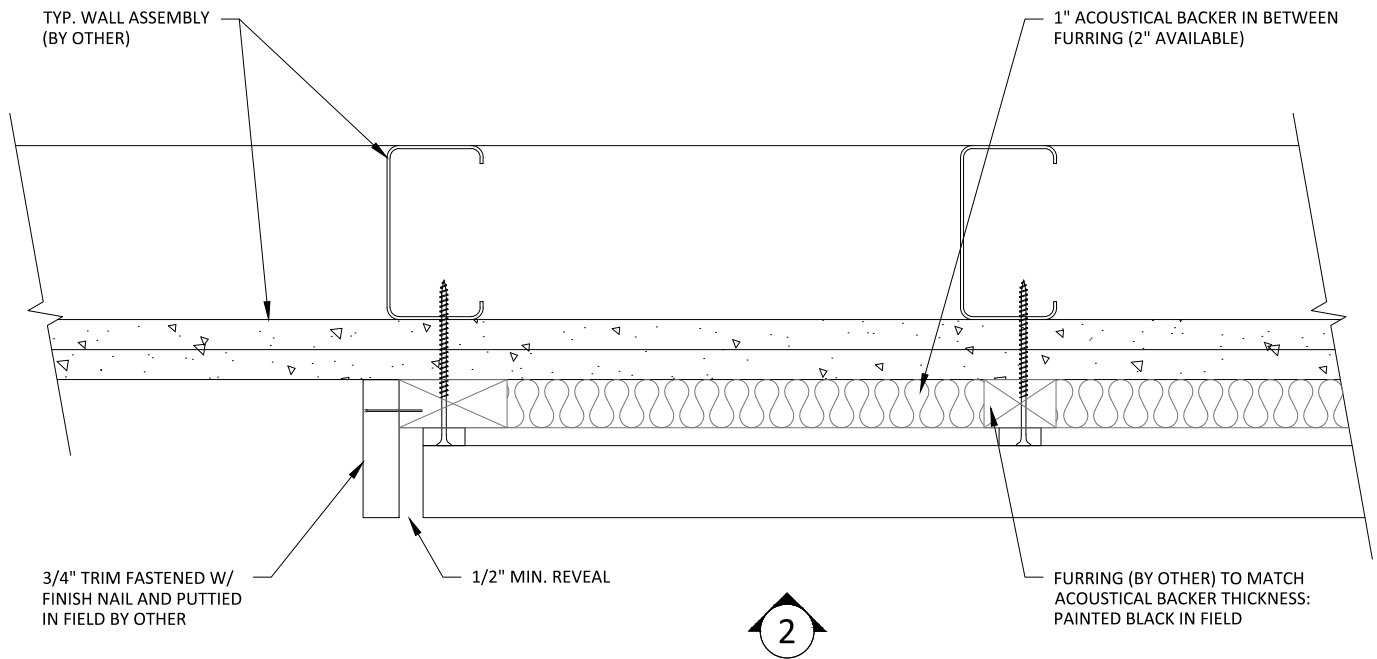
1/2" REVEAL
FOR
EXPANSION &
CONTRACTION

16 GA. FINISH NAIL (BY OTHER)

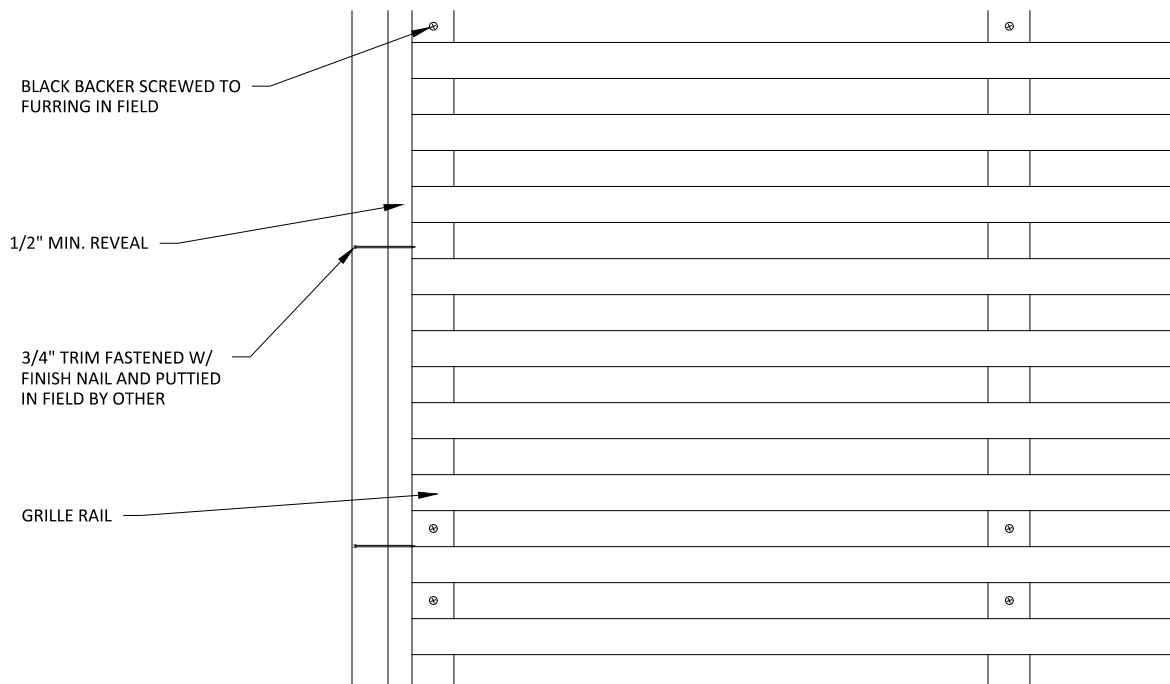
TRIM (OPTIONAL) TO COINCIDE
W/ FURRING THICKNESS; FACE
NAILED & PUTTIED IN FIELD

NOTE: 24" MAXIMUM SCREW/SUPPORT SPACING

1 HORIZONTAL WALL ISOMETRIC - TYP.
1 1/2" = 1'-0"



1 HORIZONTAL WALL PLAN @ TRIM
3" = 1'-0"



2 HORIZONTAL WALL ELEVATION @ TRIM
3" = 1'-0"

FURRING (BY OTHER) TO MATCH
ACOUSTICAL BACKER THICKNESS

BLACK BACKER SCREWED
TO FURRING IN FIELD

BASE AS SCHEDULED (BY OTHER)

2

1 HORIZONTAL WALL ELEVATION @ BASEBOARD

3" = 1'-0"

1" ACOUSTICAL BACKER (2" AVAILABLE)

BLACK BACKER SCREWED
TO FURRING IN FIELD

TYP. WALL SYSTEM (BY OTHER)

BASE AS SCHEDULED (BY OTHER)

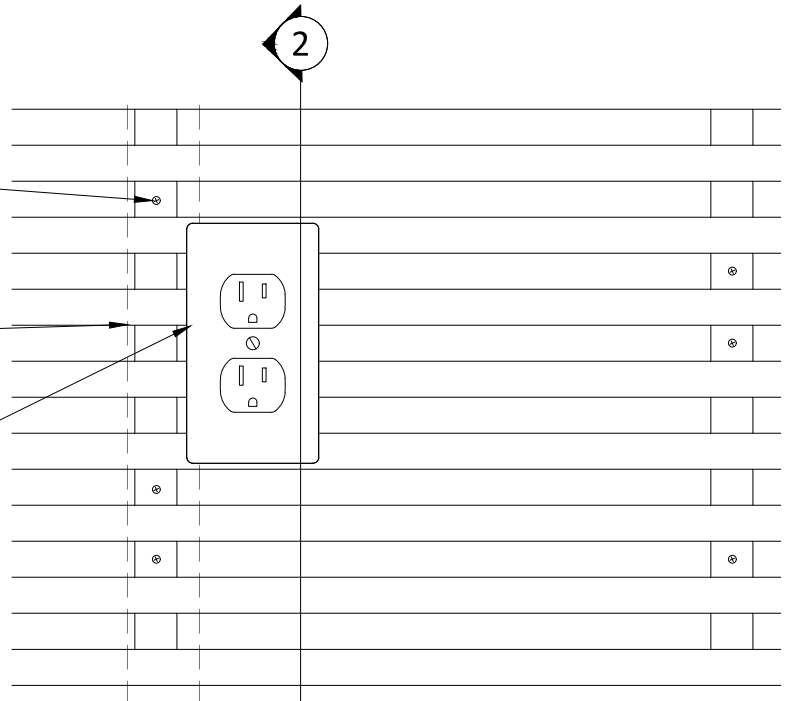
2 HORIZONTAL WALL SECTION @ BASEBOARD

3" = 1'-0"

BLACK BACKER SCREWED
TO FURRING IN FIELD

FURRING (BY OTHER) TO MATCH
ACOUSTICAL BACKER THICKNESS

LIGHT SWITCH PENETRATION FIELD CUT



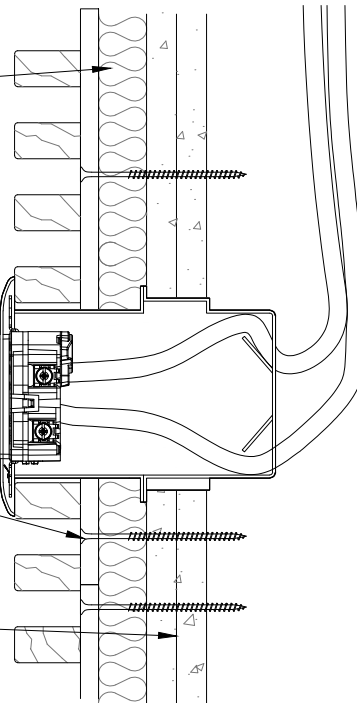
1 HORIZONTAL WALL ELEVATION @ OUTLET 3" = 1'-0"

1" ACOUSTICAL BACKER (2" AVAILABLE)

LIGHT SWITCH PENETRATION FIELD CUT

BLACK BACKER SCREWED
TO FURRING IN FIELD

TYP. WALL SYSTEM (BY OTHER)

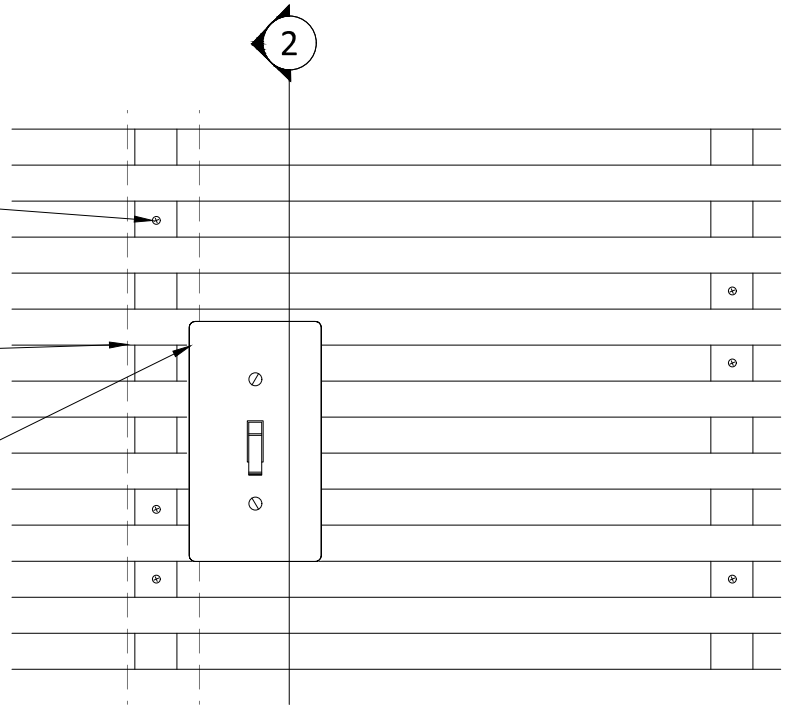


2 HORIZONTAL WALL SECTION @ OUTLET 3" = 1'-0"

BLACK BACKER SCREWED
TO FURRING IN FIELD

FURRING (BY OTHER) TO MATCH
ACOUSTICAL BACKER THICKNESS

LIGHT SWITCH PENETRATION FIELD CUT



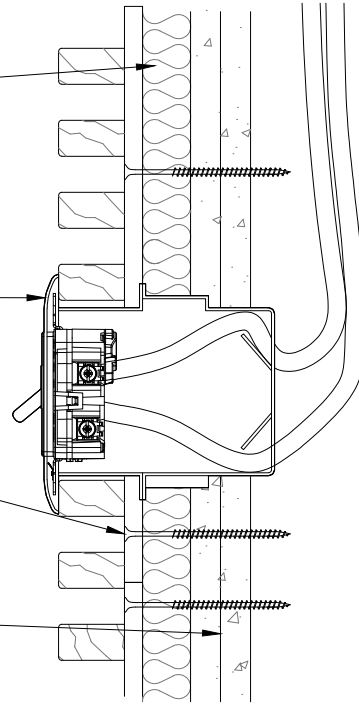
1 HORIZONTAL WALL ELEVATION @ LIGHT SWITCH
3" = 1'-0"

1" ACOUSTICAL BACKER (2" AVAILABLE)

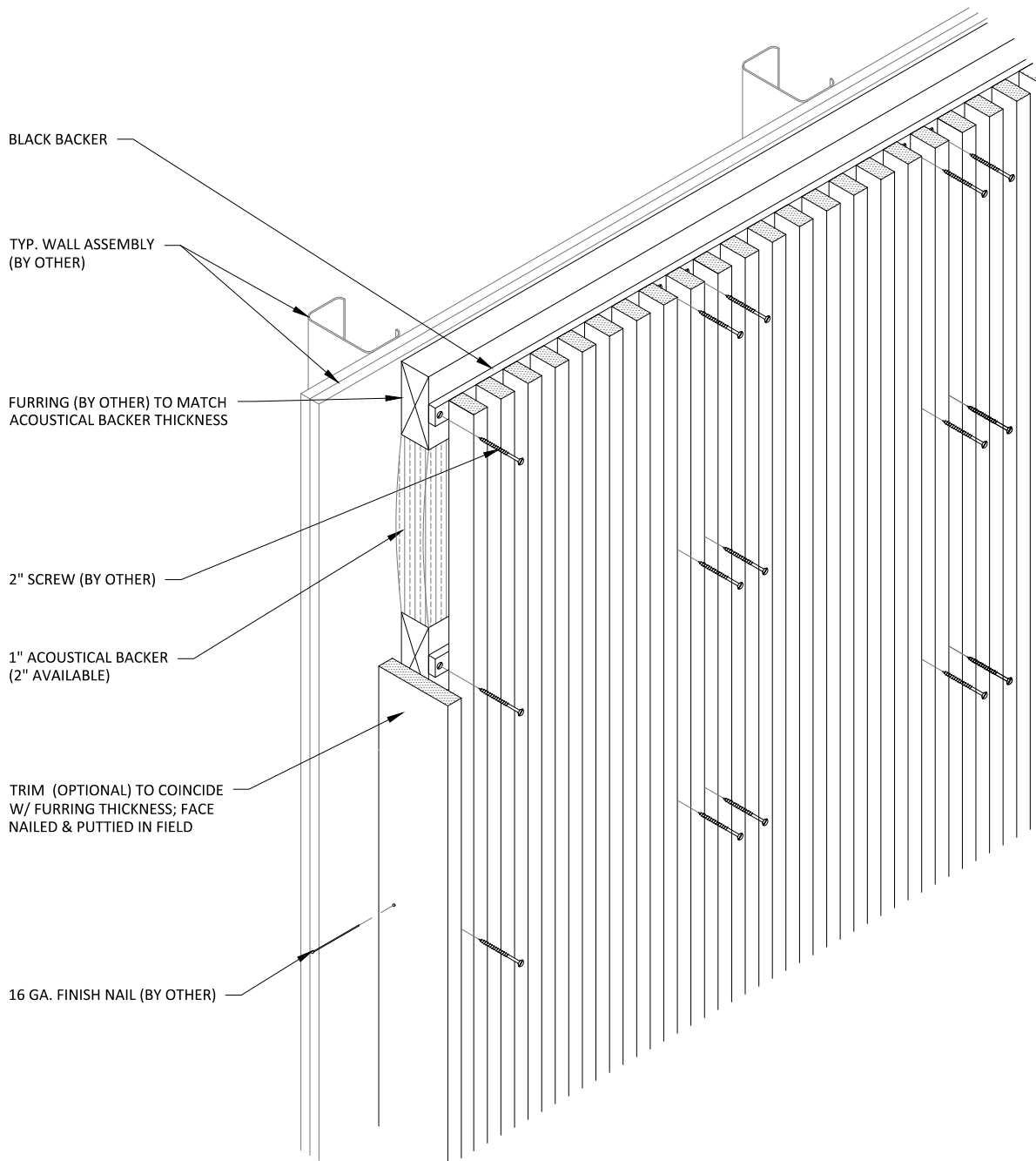
LIGHT SWITCH PENETRATION FIELD CUT

BLACK BACKER SCREWED
TO FURRING IN FIELD

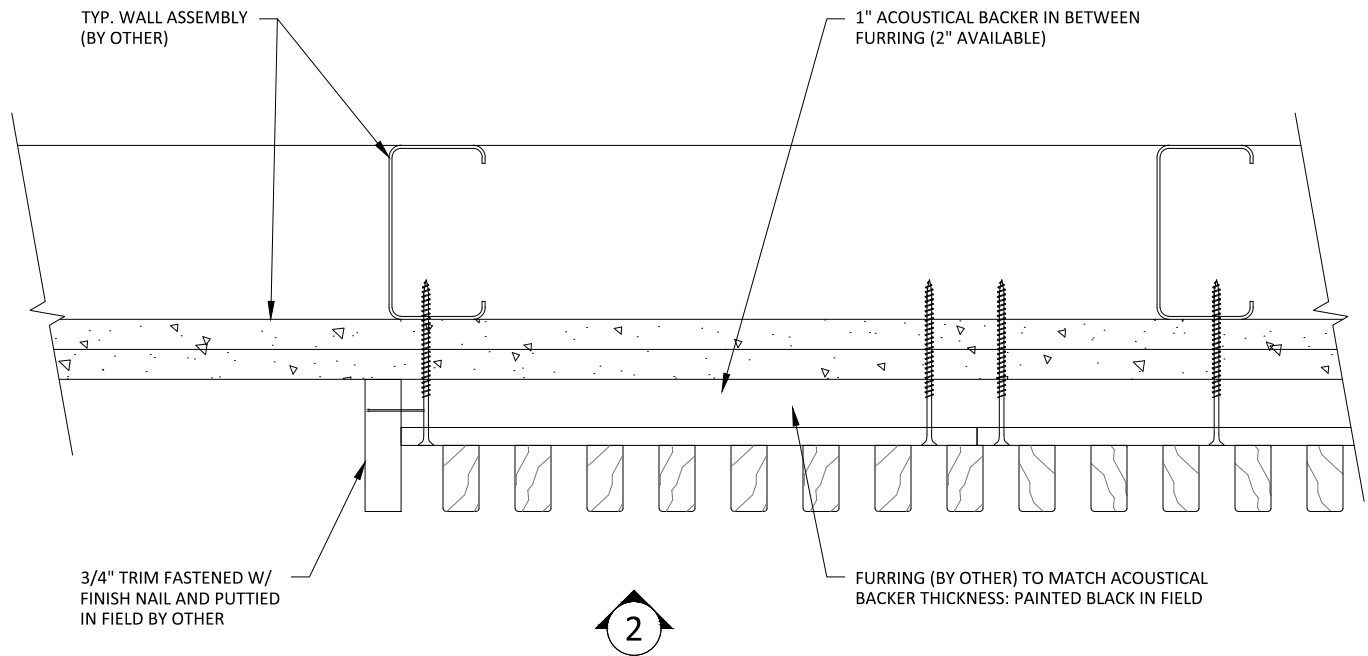
TYP. WALL SYSTEM (BY OTHER)



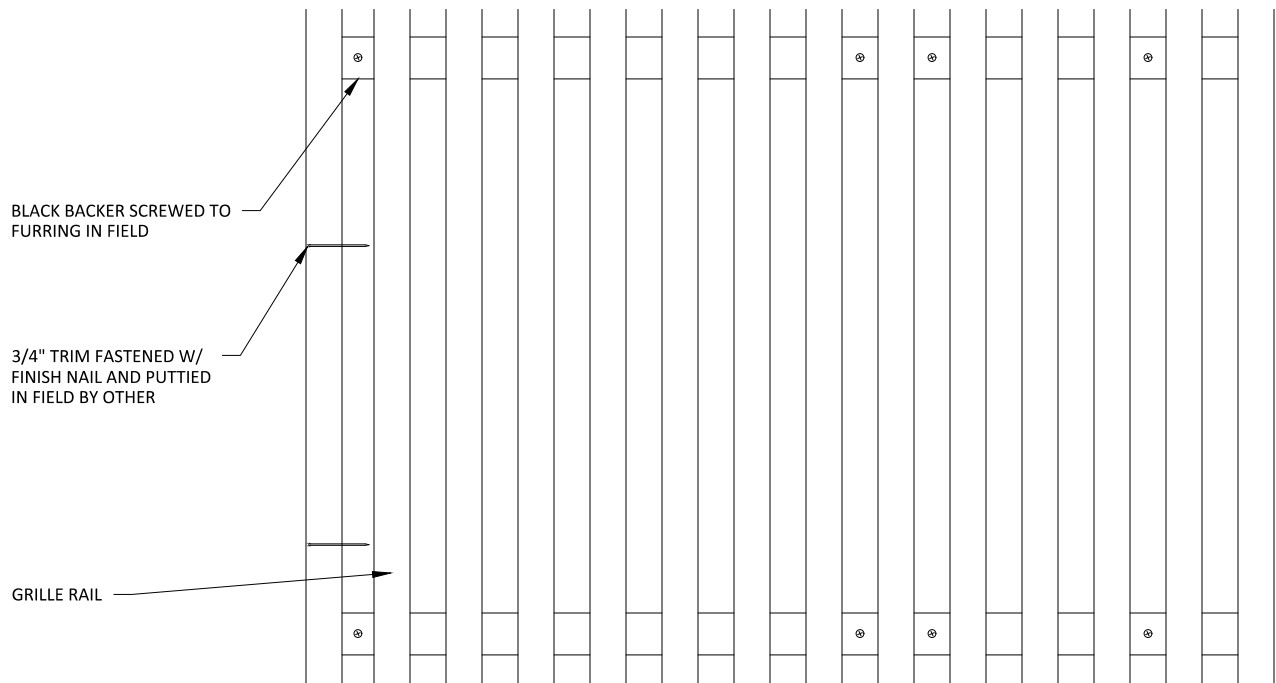
2 HORIZONTAL WALL SECTION @ LIGHT SWITCH
3" = 1'-0"



1 VERTICAL WALL ISOMETRIC - TYP.
1 1/2" = 1'-0"



1 VERTICAL WALL PLAN @ TRIM
3" = 1'-0"



2 VERTICAL WALL ELEVATION @ TRIM
3" = 1'-0"

FURRING (BY OTHER) TO MATCH
ACOUSTICAL BACKER THICKNESS

BLACK BACKER SCREWED
TO FURRING IN FIELD

BASE AS SCHEDULED (BY OTHER)

2

1 VERTICAL WALL ELEVATION @ BASEBOARD

3" = 1'-0"

1" ACOUSTICAL BACKER (2" AVAILABLE)

BLACK BACKER SCREWED
TO FURRING IN FIELD

TYP. WALL SYSTEM (BY OTHER)

BASE AS SCHEDULED (BY OTHER)

2 VERTICAL WALL SECTION @ BASEBOARD

3" = 1'-0"

GRILLE-BACKERED (VERTICAL WALL SYSTEM) - BASEBOARD DETAILS

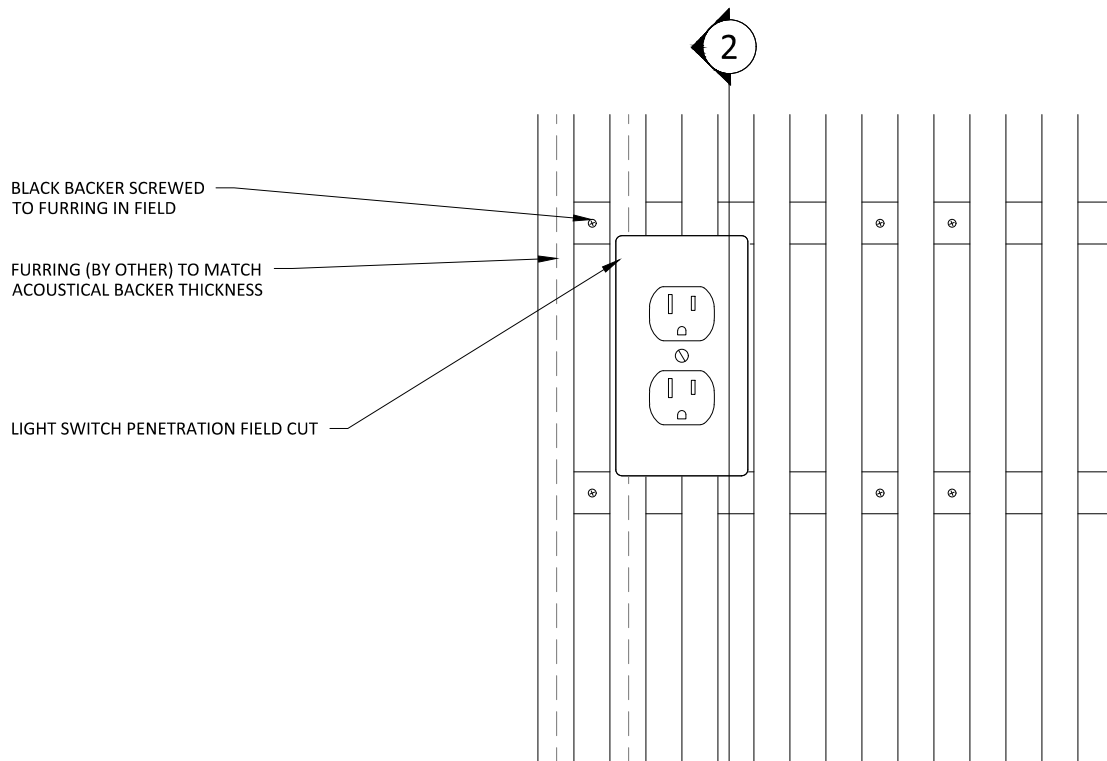
SCALE: AS NOTED

LAST REVISED: 6/29/2023

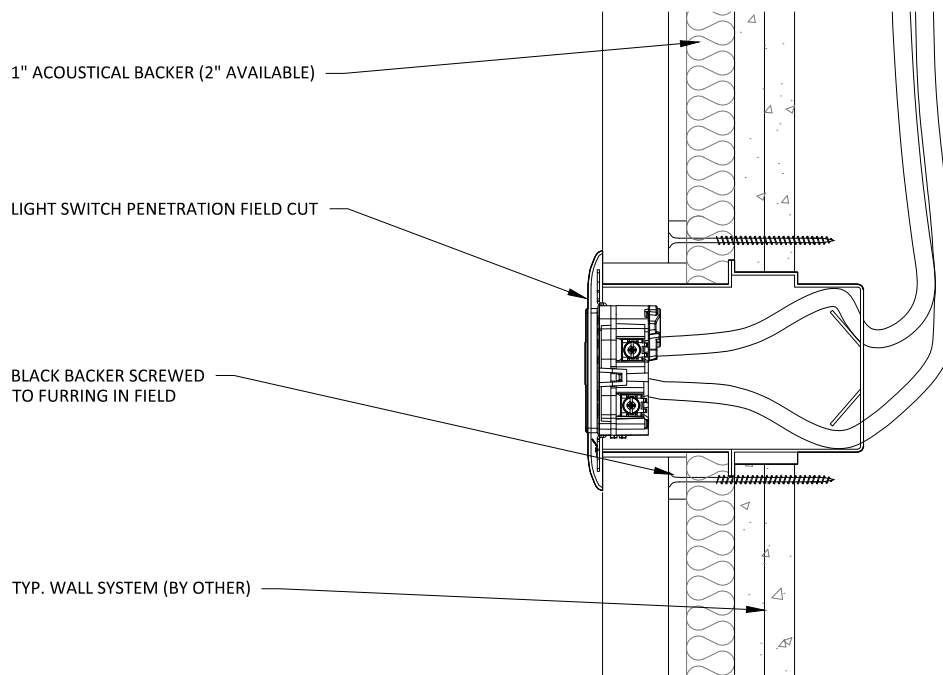
SHEET NUMBER

20

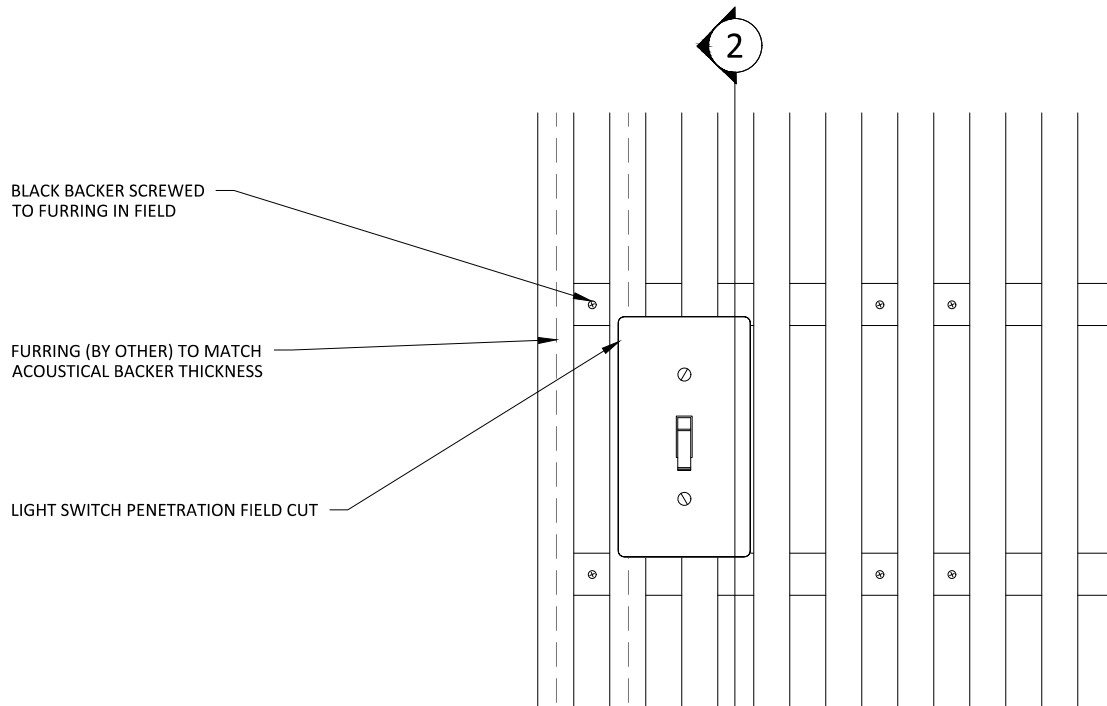
DRAWN BY: BMH



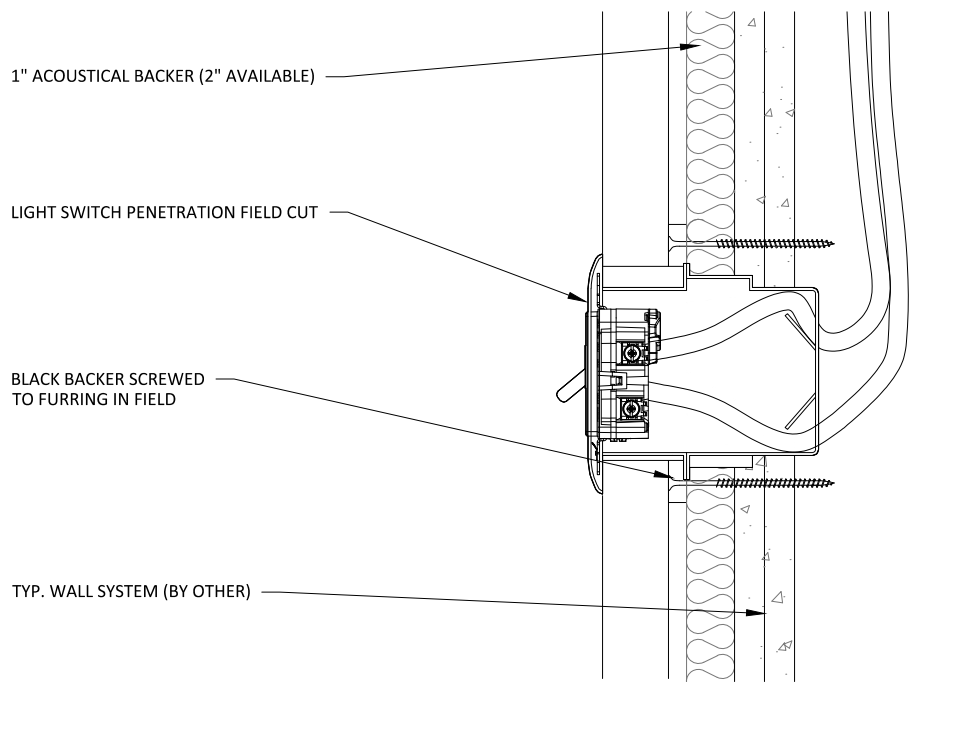
1 VERTICAL WALL ELEVATION @ OUTLET
3" = 1'-0"



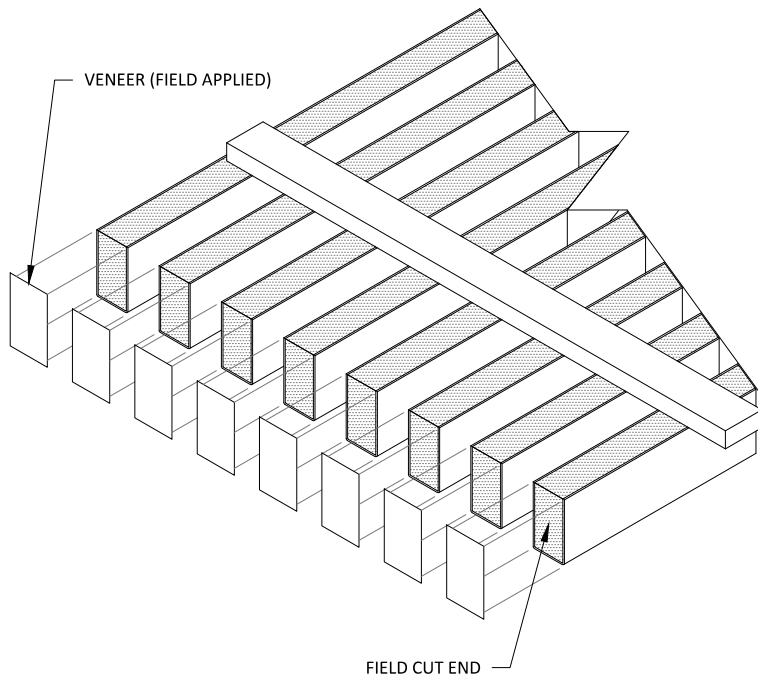
2 VERTICAL WALL SECTION @ OUTLET
3" = 1'-0"



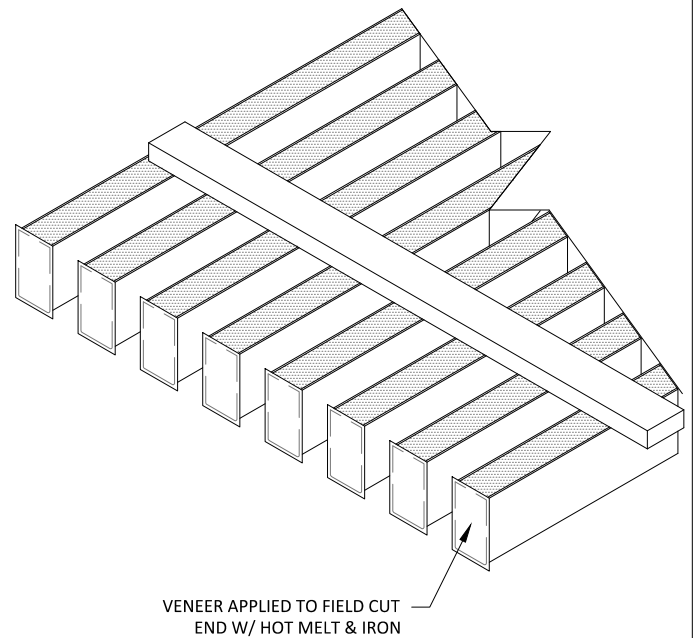
1 VERTICAL WALL ELEVATION @ LIGHT SWITCH
3" = 1'-0"



2 VERTICAL WALL SECTION @ LIGHT SWITCH
3" = 1'-0"

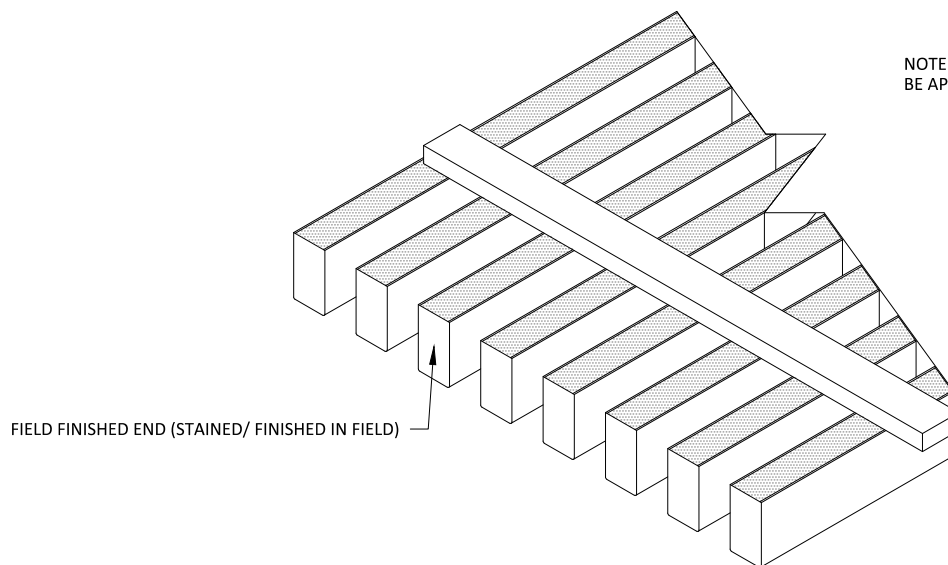


1 STEP 1
3" = 1'-0"



2 STEP 2
3" = 1'-0"

NOTE: FOR SOLID WOOD RAILS, NO VENEER NEEDS TO BE APPLIED - INSTEAD, REFINISH THE CUT END IN FIELD



3 STEP 3
3" = 1'-0"

GRILLE-BACKERED SYSTEM - FIELD FINISHED END INSTRUCTIONS

SCALE: AS NOTED

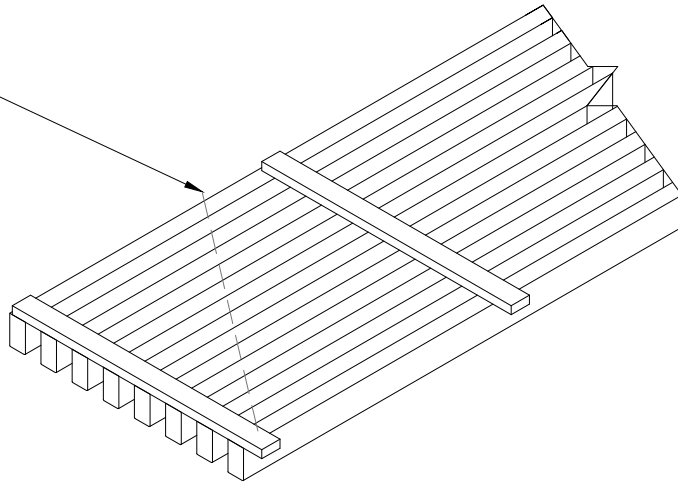
LAST REVISED: 6/29/2023

SHEET NUMBER

23

DRAWN BY: BMH

DESIRED FIELD CUT ANGLE

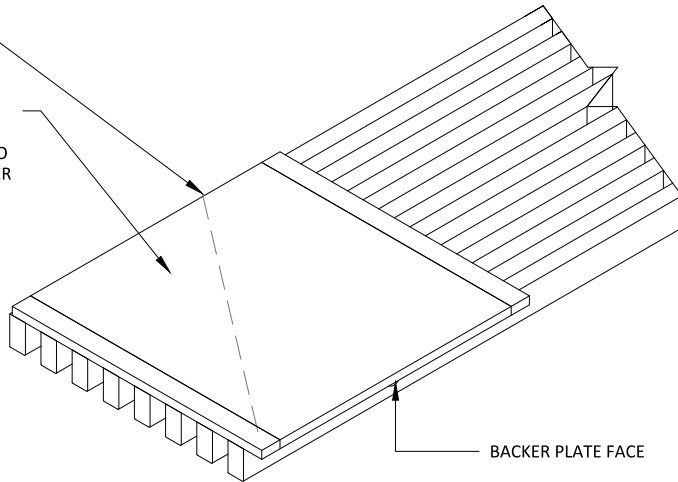


1 ANGLE-CUTTING STEP 1

1 1/2" = 1'-0"

DESIRED FIELD CUT ANGLE

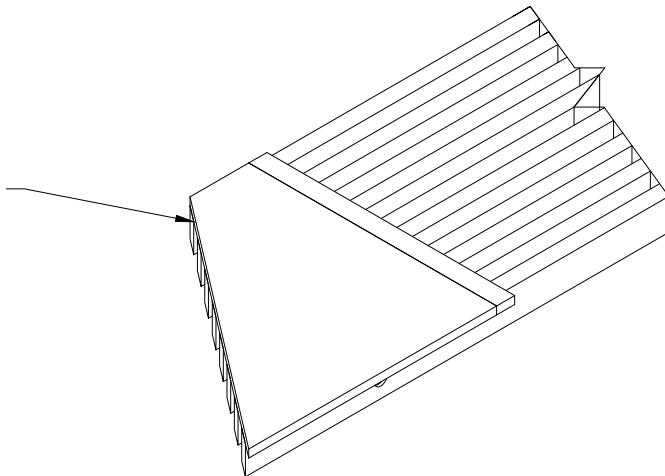
STAPLE 3/8" THICK
PLYWOOD BACKER
PLATE (BY OTHER) TO
GRILLE RAILS. BACKER
PLATE IS TO BE
PAINTED BLACK ON
FACE.



2 ANGLE-CUTTING STEP 2

1 1/2" = 1'-0"

ONCE BACKER PLATE IS FASTENED TO GRILLE
PANEL, CUT DESIRED LINE AND FINISH ENDS
AS SHOWN IN THE FIELD FINISHED END
INSTRUCTIONS IN THIS STANDARD DETAIL SET



3 ANGLE-CUTTING STEP 3

1 1/2" = 1'-0"