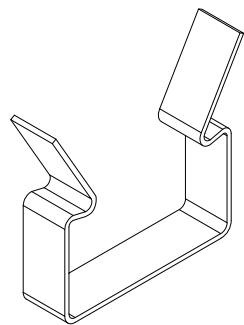


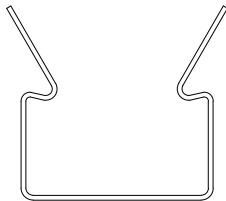
1

GRILLE-BACKERED SECTION DETAIL

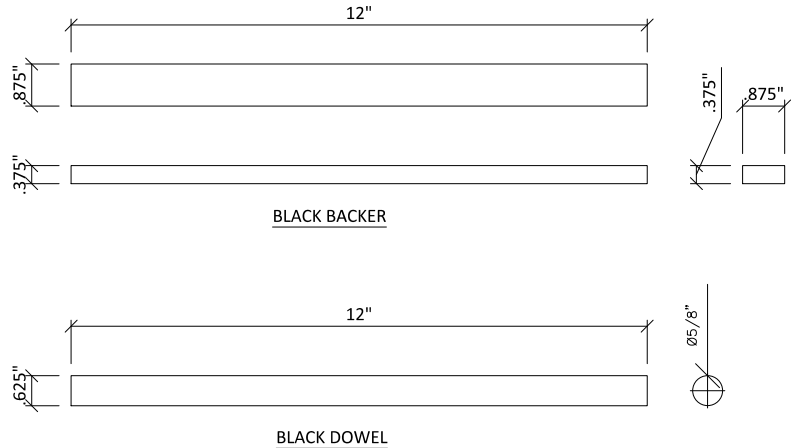
3" = 1'-0"



ISOMETRIC



ELEVATION



2

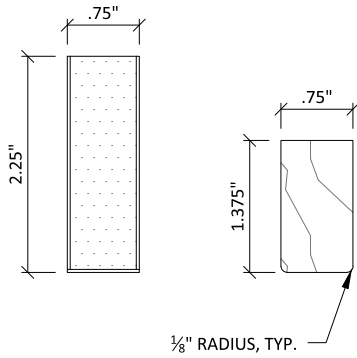
BACKER CLIP

1' = 1'-0"

3

BACKER & DOWEL DETAILS

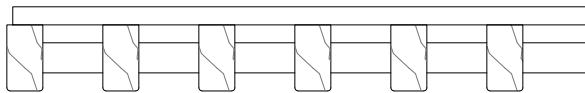
3" = 1'-0"



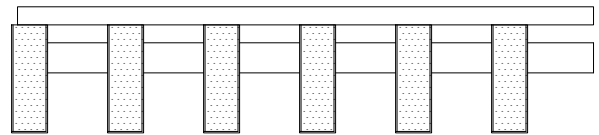
CUSTOM PROFILES AVAILABLE UPON REQUEST

1 TYPICAL RAIL PROFILES

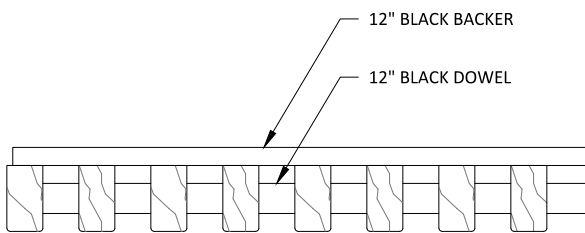
6" = 1'-0"



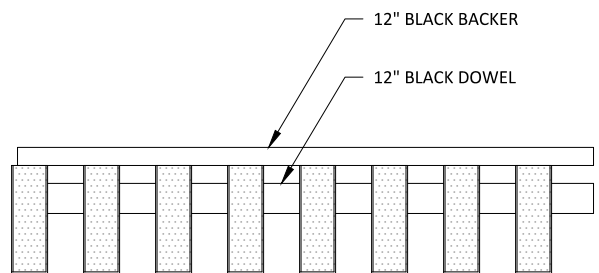
3/4" X 1 3/8" RAILS
6 RAIL/FT.
2" SPACING O.C.



3/4" X 2 1/4" RAILS
6 RAIL/FT.
2" SPACING O.C.



3/4" X 1 3/8" RAILS
8 RAIL/FT.
1 1/2" SPACING O.C.



3/4" X 2 1/4" RAILS
8 RAIL/FT.
1 1/2" SPACING O.C.

2 TYPICAL 12 INCH GRILLE MODULES

3" = 1'-0"

GRILLE-B&D SYSTEM - TYPICAL PROFILE OPTIONS

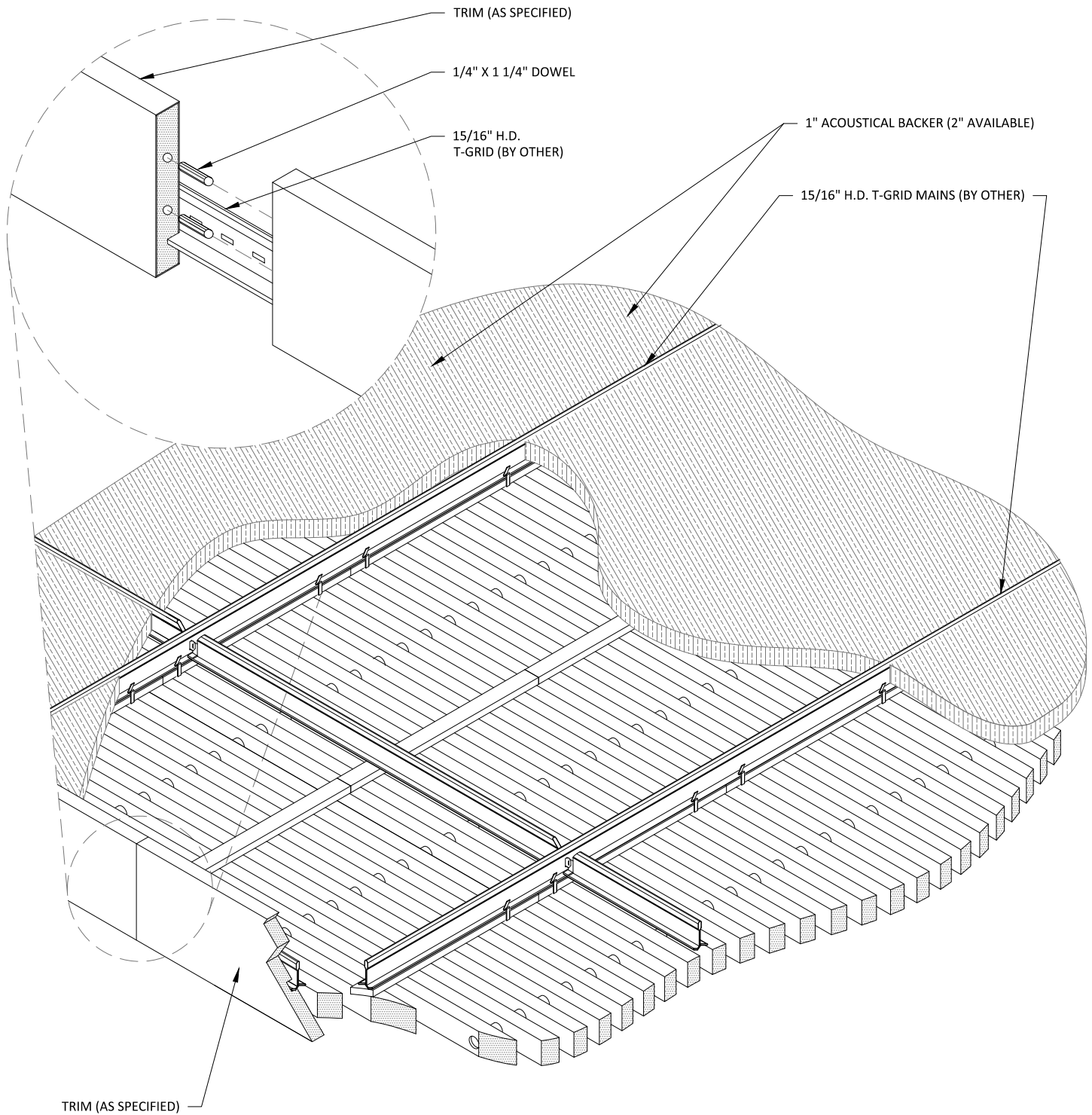
SCALE: AS NOTED

LAST REVISED: 6/29/2023

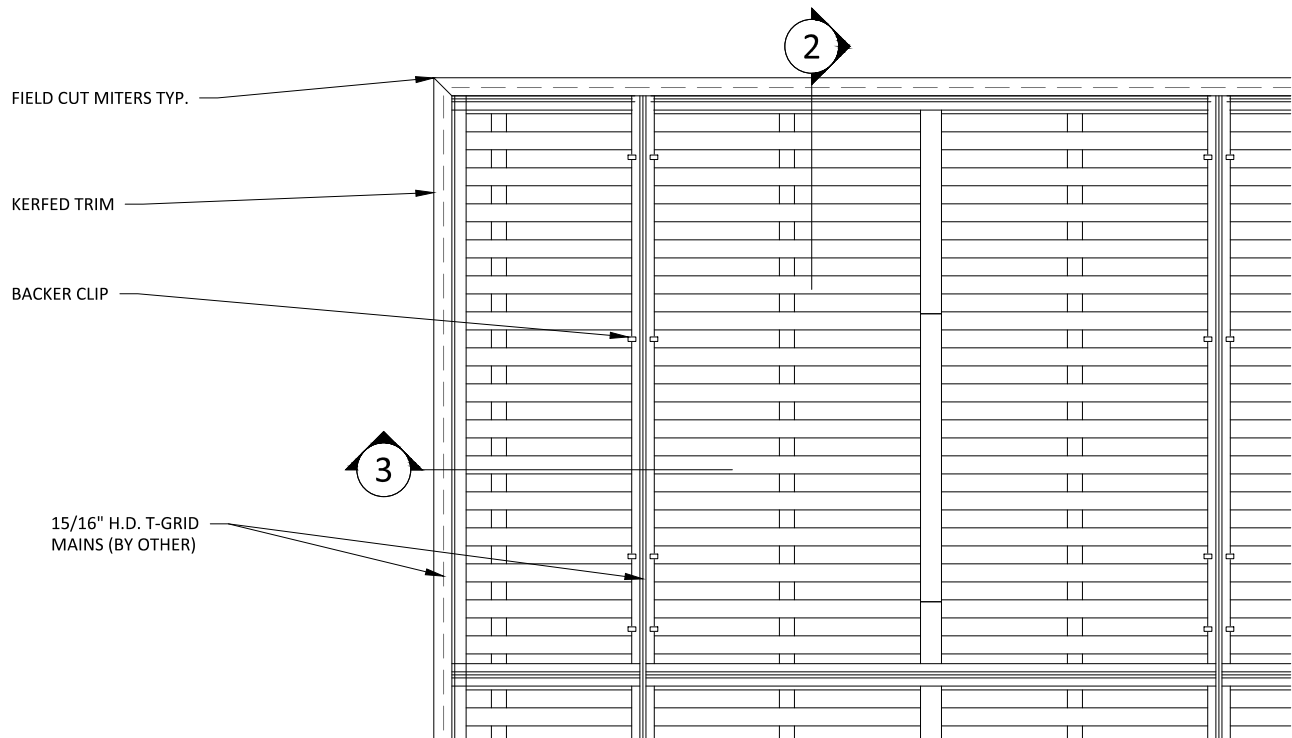
SHEET NUMBER

2

DRAWN BY: BH

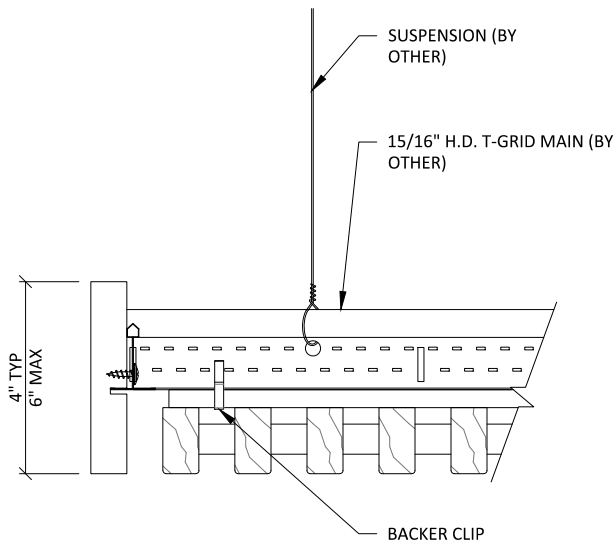


1 CEILING ISOMETRIC - TYP.
1 1/2" = 1'-0"

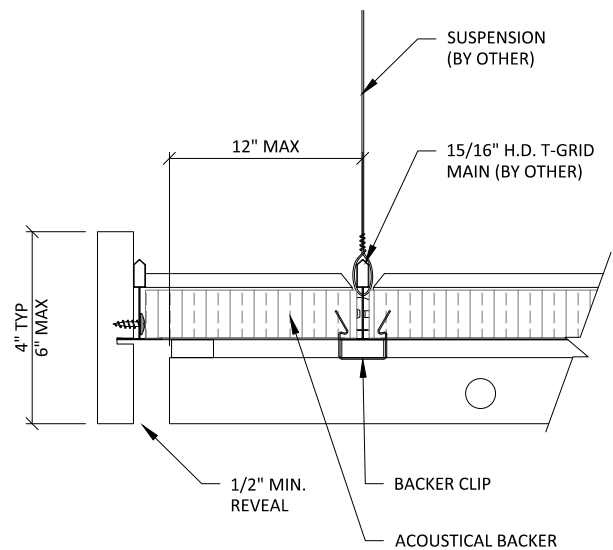


1 TRIM @ MITERED CORNER - PLAN
1 1/2" = 1'-0"

** ALL FIELD CUTS TO ALLOW FOR 1/4" MIN REVEAL FOR EXPANSION & CONTRACTION

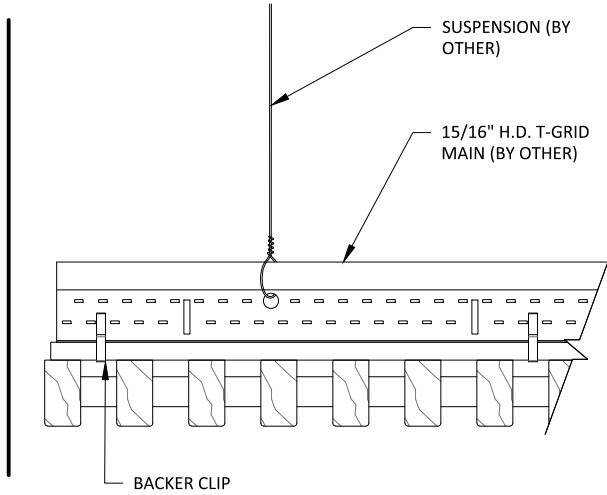


2 TRIM DETAIL 1
3" = 1'-0"

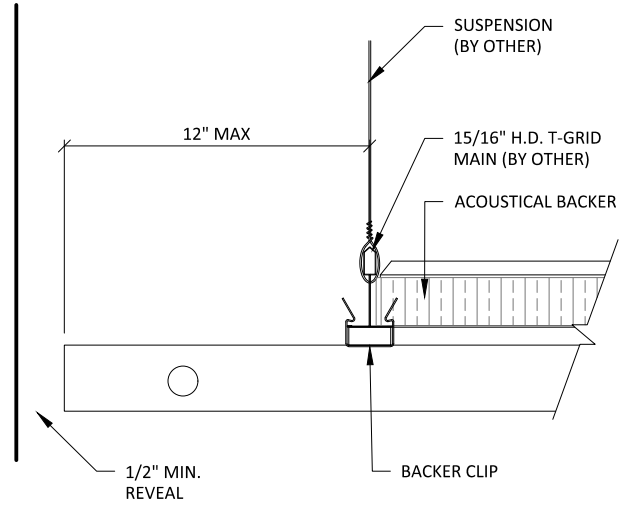


3 TRIM DETAIL 2
3" = 1'-0"

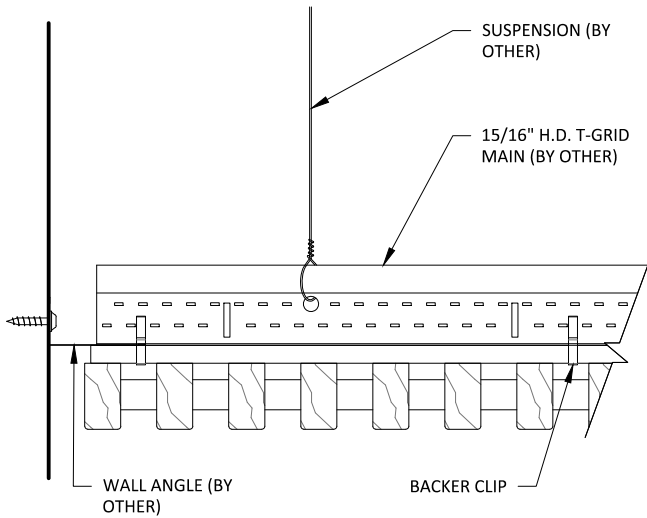
** ALL FIELD CUTS TO ALLOW FOR 1/4" MIN REVEAL FOR EXPANSION & CONTRACTION



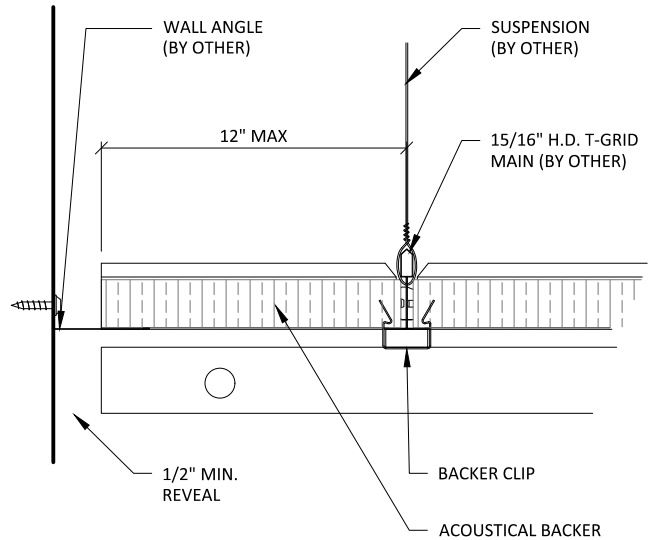
1 EDGE DETAIL 1
3" = 1'-0"



2 EDGE DETAIL 2
3" = 1'-0"



3 EDGE DETAIL 3
3" = 1'-0"



4 EDGE DETAIL 4
3" = 1'-0"

15/16" HEAVY DUTY
T-GRID (BY OTHER)
(2X4 LAYOUT TYP)

INDEPENDENTLY SUPPORTED
CUSTOMER PROVIDED FIXTURE:
FIELD CUT PENETRATION

BLACK BACKER

BLACK DOWEL

BACKER CLIP - 24" OC MAX
(2 PER BACKER TYPICAL)

2

1 SPRINKLER HEAD DETAIL - PLAN VIEW

1 1/2" = 1'-0"

INDEPENDENTLY SUPPORTED
CUSTOMER PROVIDED FIXTURE

15/16" HEAVY DUTY
T-GRID (BY OTHER)

SUSPENSION
(BY OTHER)

BACKER CLIP

FIELD CUT

TRIM PLATE
RECOMMENDED
(BY OTHER)

2 SPRINKLER HEAD DETAIL - SECTION VIEW

1 1/2" = 1'-0"



123 Columbia Court North, Chaska,
Minnesota 55318 P. 800.527.6253

GRILLE-B&D (CEILING SYSTEM) - SPRINKLER HEAD DETAILS

SCALE: AS NOTED

LAST REVISED: 6/29/2023

DO NOT SCALE DRAWING. FIGURED DIMENSIONS ARE TO BE FOLLOWED. READ THIS DRAWING IN CONNECTION WITH GENERAL ARCHITECTURAL PLANS, STRUCTURAL PLANS, AND OTHER RELATED DRAWINGS. THESE DRAWINGS REPRESENT ASI'S UNDERSTANDING AND INTERPRETATION OF THE ARCHITECTURAL DRAWINGS AND HOW ASI PRODUCTS RELATE TO THE PROJECT. COPYRIGHT ASI © 2023

SHEET NUMBER

6

DRAWN BY: BH

15/16" HEAVY DUTY
T-GRID (BY OTHER)
(2X4 LAYOUT TYP)

INDEPENDENTLY SUPPORTED
CUSTOMER PROVIDED FIXTURE:
FIELD CUT PENETRATION

BLACK BACKER

BLACK DOWEL

BACKER CLIP - 24" OC MAX
(2 PER BACKER TYPICAL)

2

1

CAN LIGHT DETAIL - PLAN VIEW

1 1/2" = 1'-0"

INDEPENDENTLY SUPPORTED
CUSTOMER PROVIDED FIXTURE

15/16" HEAVY DUTY
T-GRID (BY OTHER)

SUSPENSION
(BY OTHER)

BACKER CLIP

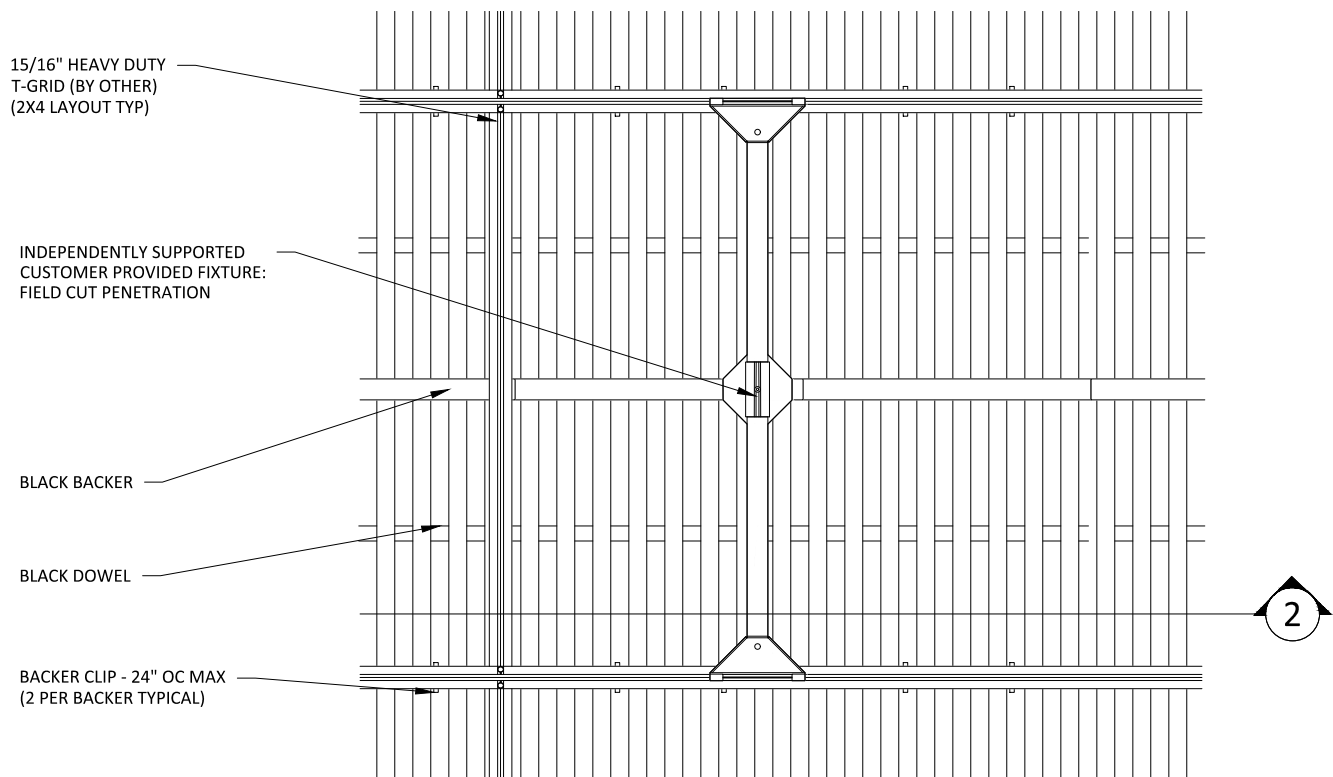
FIELD CUT

TRIM PLATE
RECOMMENDED
(BY OTHER)

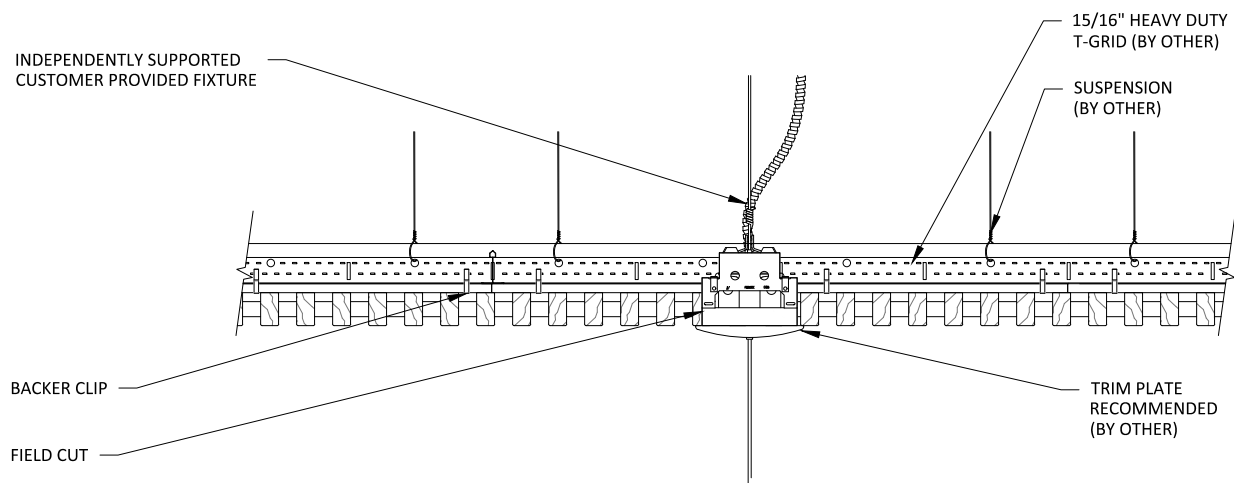
2

CAN LIGHT DETAIL - SECTION VIEW

1 1/2" = 1'-0"



1 PENDANT LIGHT DETAIL - PLAN VIEW
1 1/2" = 1'-0"



2 PENDANT LIGHT DETAIL - SECTION VIEW
1 1/2" = 1'-0"

15/16" HEAVY DUTY
T-GRID (BY OTHER)
(2X4 LAYOUT TYP)

INDEPENDENTLY SUPPORTED
CUSTOMER PROVIDED FIXTURE:
FIELD CUT PENETRATION

BLACK BACKER

BLACK DOWEL

BACKER CLIP - 24" OC MAX
(2 PER BACKER TYPICAL)

2

1

RECESSED SPEAKER DETAIL - PLAN VIEW

1 1/2" = 1'-0"

INDEPENDENTLY SUPPORTED
CUSTOMER PROVIDED FIXTURE

15/16" HEAVY DUTY
T-GRID (BY OTHER)

SUSPENSION
(BY OTHER)

BACKER CLIP

FIELD CUT

TRIM PLATE
RECOMMENDED
(BY OTHER)

2

RECESSED SPEAKER DETAIL - SECTION VIEW

1 1/2" = 1'-0"

15/16" HEAVY DUTY
T-GRID (BY OTHER)
(2X4 LAYOUT TYP)

INDEPENDENTLY SUPPORTED
CUSTOMER PROVIDED FIXTURE:
FIELD CUT PENETRATION

BLACK BACKER

BLACK DOWEL

BACKER CLIP - 24" OC MAX
(2 PER BACKER TYPICAL)

2

1 DIFFUSER DETAIL - PLAN VIEW

1 1/2" = 1'-0"

INDEPENDENTLY SUPPORTED
CUSTOMER PROVIDED FIXTURE

15/16" HEAVY DUTY
T-GRID (BY OTHER)

SUSPENSION
(BY OTHER)

BACKER CLIP

FIELD CUT

TRIM PLATE
RECOMMENDED
(BY OTHER)

2 DIFFUSER DETAIL - SECTION VIEW

1 1/2" = 1'-0"

15/16" HEAVY DUTY
T-GRID (BY OTHER)
(2X4 LAYOUT TYP)

INDEPENDENTLY SUPPORTED
LINEAR LIGHT: FIELD CUT
PENETRATION

BLACK BACKER

BLACK DOWEL

BACKER CLIP - 24" OC MAX
(2 PER BACKER TYPICAL)

2

1

LINEAR LIGHT DETAIL - PLAN VIEW

1" = 1'-0"

INDEPENDENTLY SUPPORTED
CUSTOMER PROVIDED FIXTURE

15/16" HEAVY DUTY
T-GRID (BY OTHER)

SUSPENSION
(BY OTHER)

BACKER CLIP

TRIM PLATE
RECOMMENDED
(BY OTHER)

FIELD CUT

2

LINEAR LIGHT DETAIL - SECTION VIEW

1 1/2" = 1'-0"

GRILLE-B&D (CEILING SYSTEM) - LINEAR LIGHT DETAILS

SHEET NUMBER

11

SCALE: AS NOTED

LAST REVISED: 6/29/2023

DRAWN BY: BH

1" ACOUSTICAL BACKER
(2" AVAILABLE)

TYP. WALL ASSEMBLY
(BY OTHER)

FURRING (BY OTHER) TO MATCH
ACOUSTICAL BACKER THICKNESS

BLACK BACKER

2" SCREW (BY OTHER)

GRILLE RAIL

1/2" REVEAL FOR
EXPANSION &
CONTRACTION

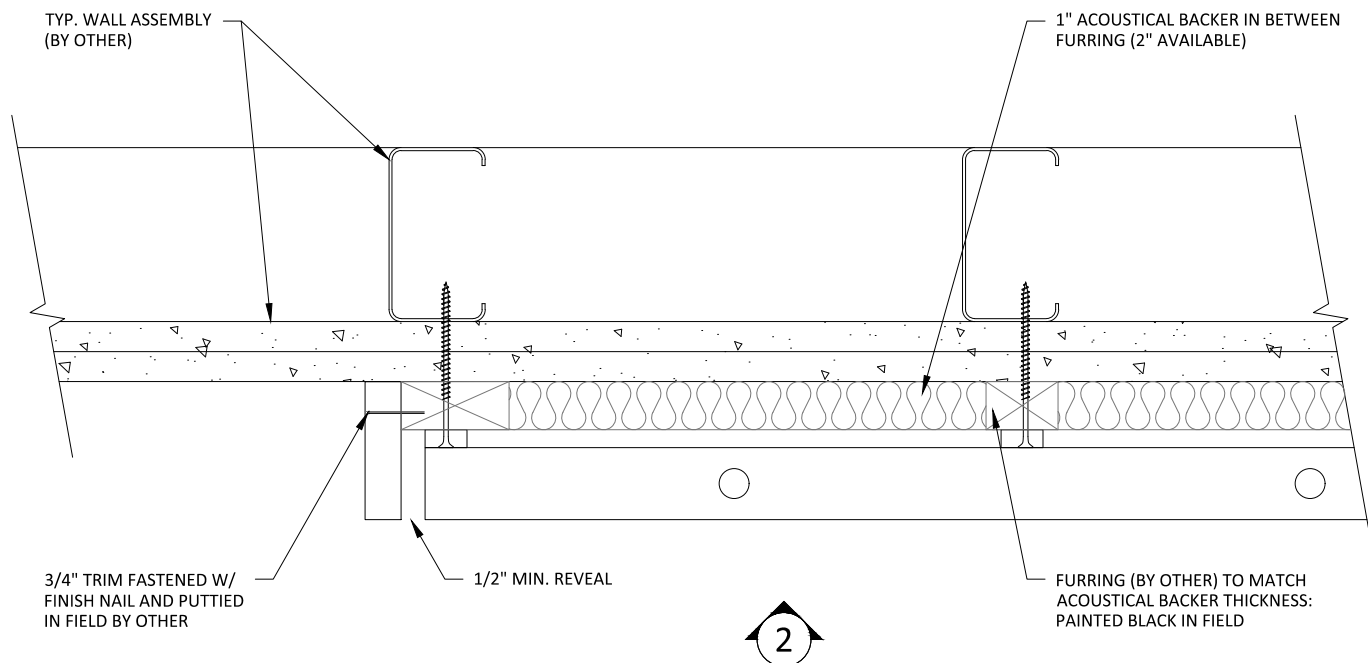
16 GA. FINISH NAIL (BY OTHER)

TRIM (OPTIONAL) TO COINCIDE
W/ FURRING THICKNESS; FACE
NAILED & PUTTIED IN FIELD

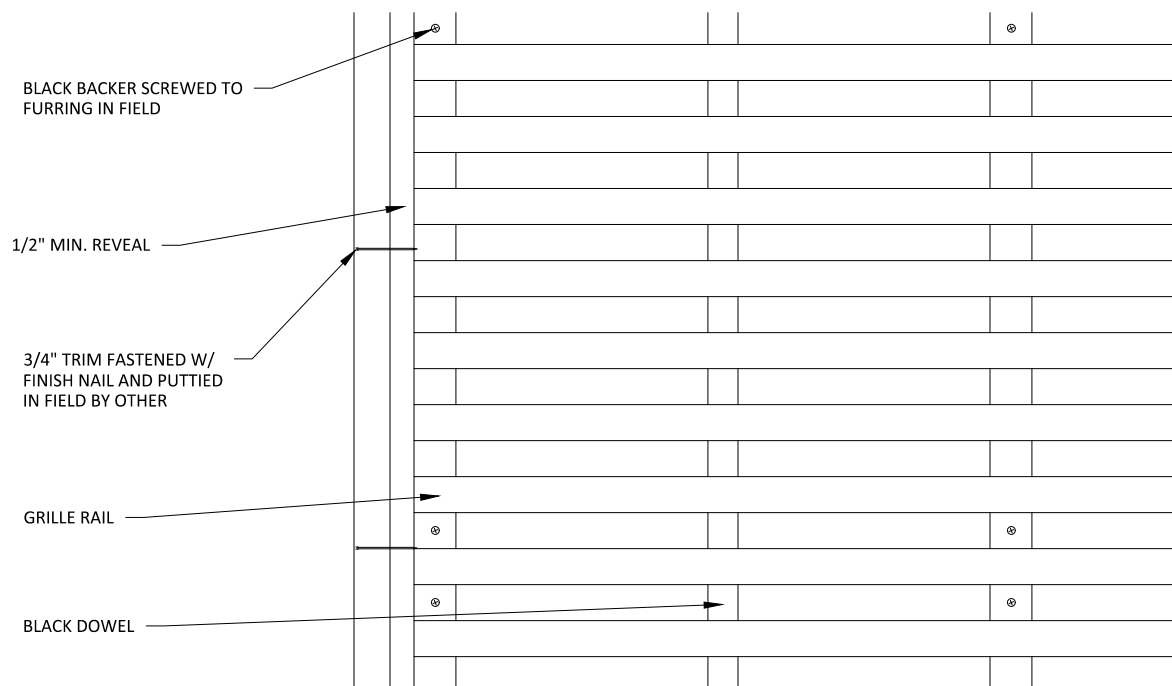
BLACK DOWEL

NOTE: 24" MAXIMUM SCREW/SUPPORT SPACING

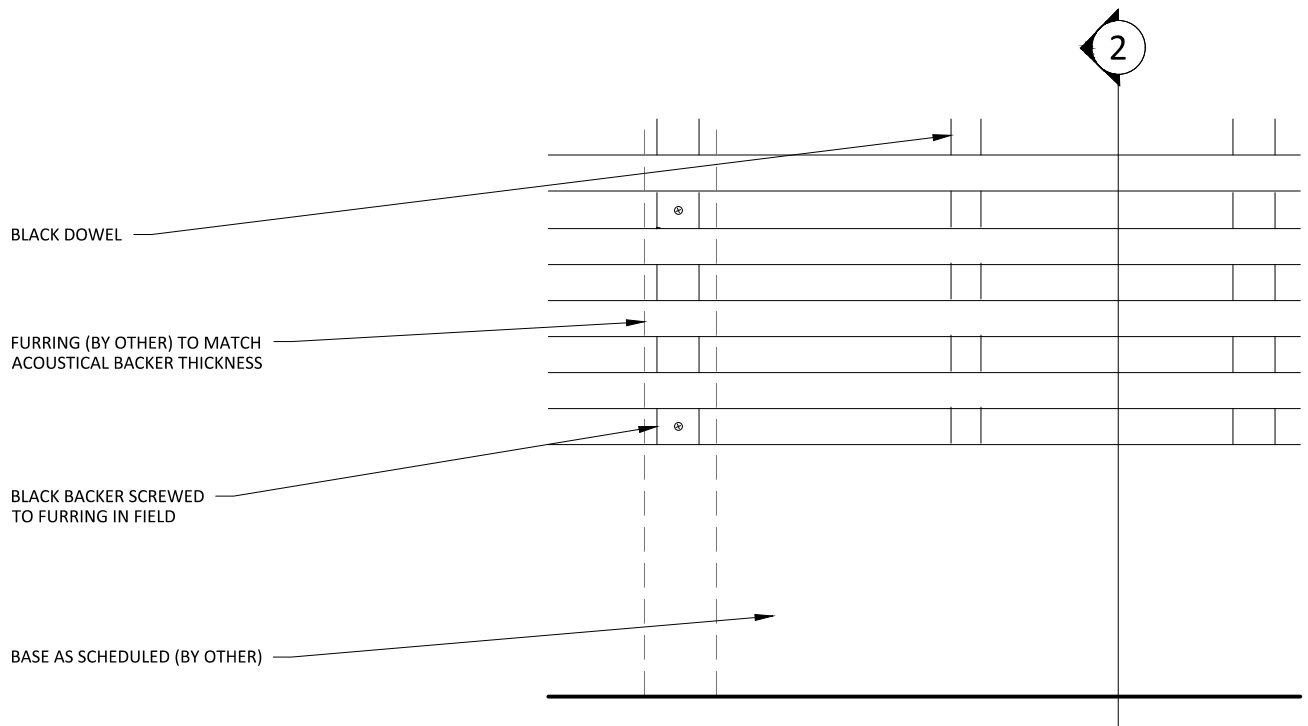
1 HORIZONTAL WALL ISOMETRIC - TYP.
1 1/2" = 1'-0"



1 HORIZONTAL WALL PLAN @ TRIM
3" = 1'-0"

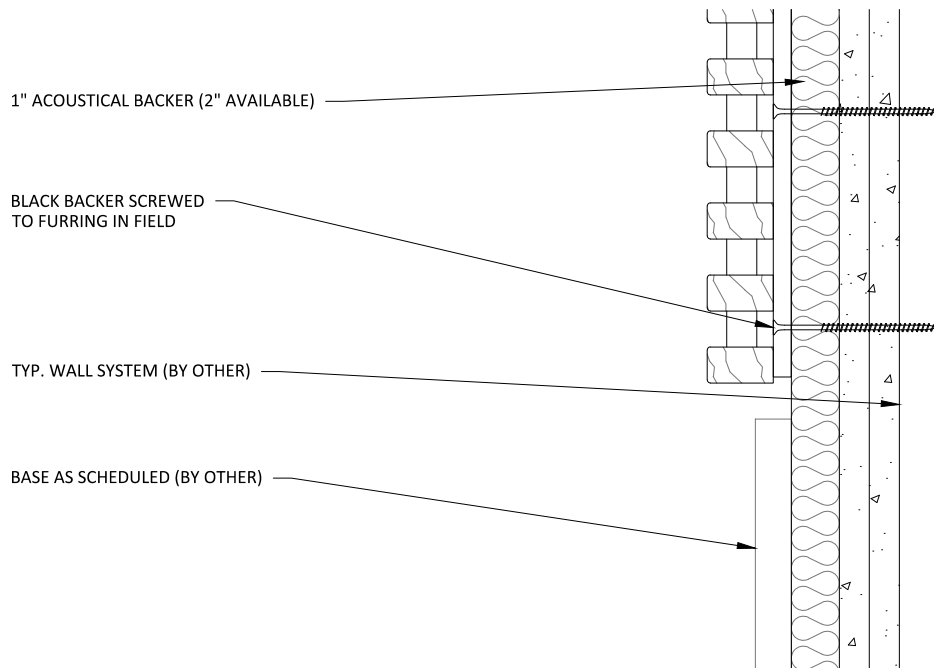


2 HORIZONTAL WALL ELEVATION @ TRIM
3" = 1'-0"



1 HORIZONTAL WALL ELEVATION @ BASEBOARD

3" = 1'-0"



2 HORIZONTAL WALL SECTION @ BASEBOARD

3" = 1'-0"

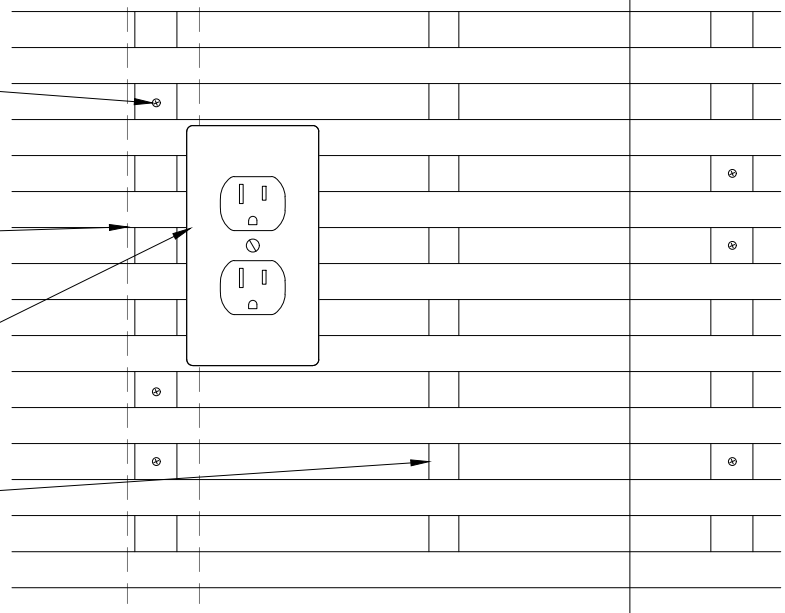
2

BLACK BACKER SCREWED TO FURRING IN FIELD

FURRING (BY OTHER) TO MATCH ACOUSTICAL BACKER THICKNESS

LIGHT SWITCH PENETRATION FIELD CUT

BLACK DOWEL



1 HORIZONTAL WALL ELEVATION @ OUTLET
3" = 1'-0"

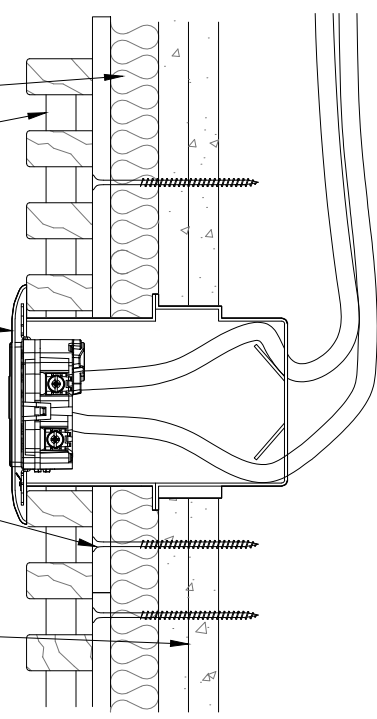
1" ACOUSTICAL BACKER (2" AVAILABLE)

BLACK DOWEL

LIGHT SWITCH PENETRATION FIELD CUT

BLACK BACKER SCREWED TO FURRING IN FIELD

TYP. WALL SYSTEM (BY OTHER)



2 HORIZONTAL WALL SECTION @ OUTLET
3" = 1'-0"

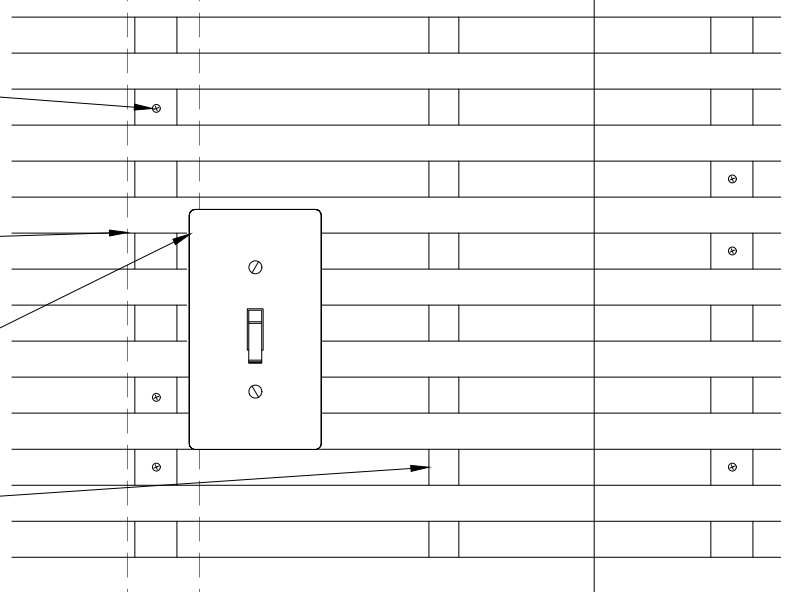
2

BLACK BACKER SCREWED
TO FURRING IN FIELD

FURRING (BY OTHER) TO MATCH
ACOUSTICAL BACKER THICKNESS

LIGHT SWITCH PENETRATION FIELD CUT

BLACK DOWEL



1 HORIZONTAL WALL ELEVATION @ LIGHT SWITCH
3" = 1'-0"

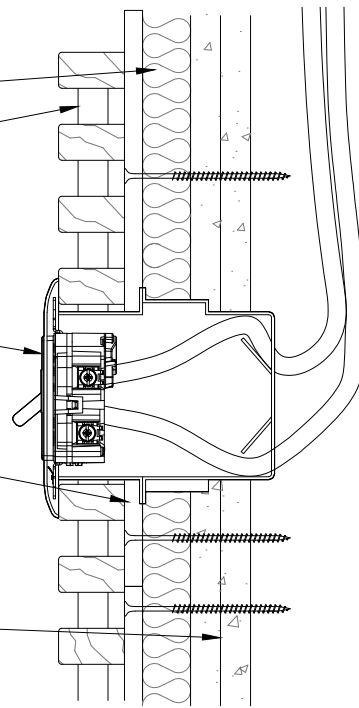
1" ACOUSTICAL BACKER (2" AVAILABLE)

BLACK DOWEL

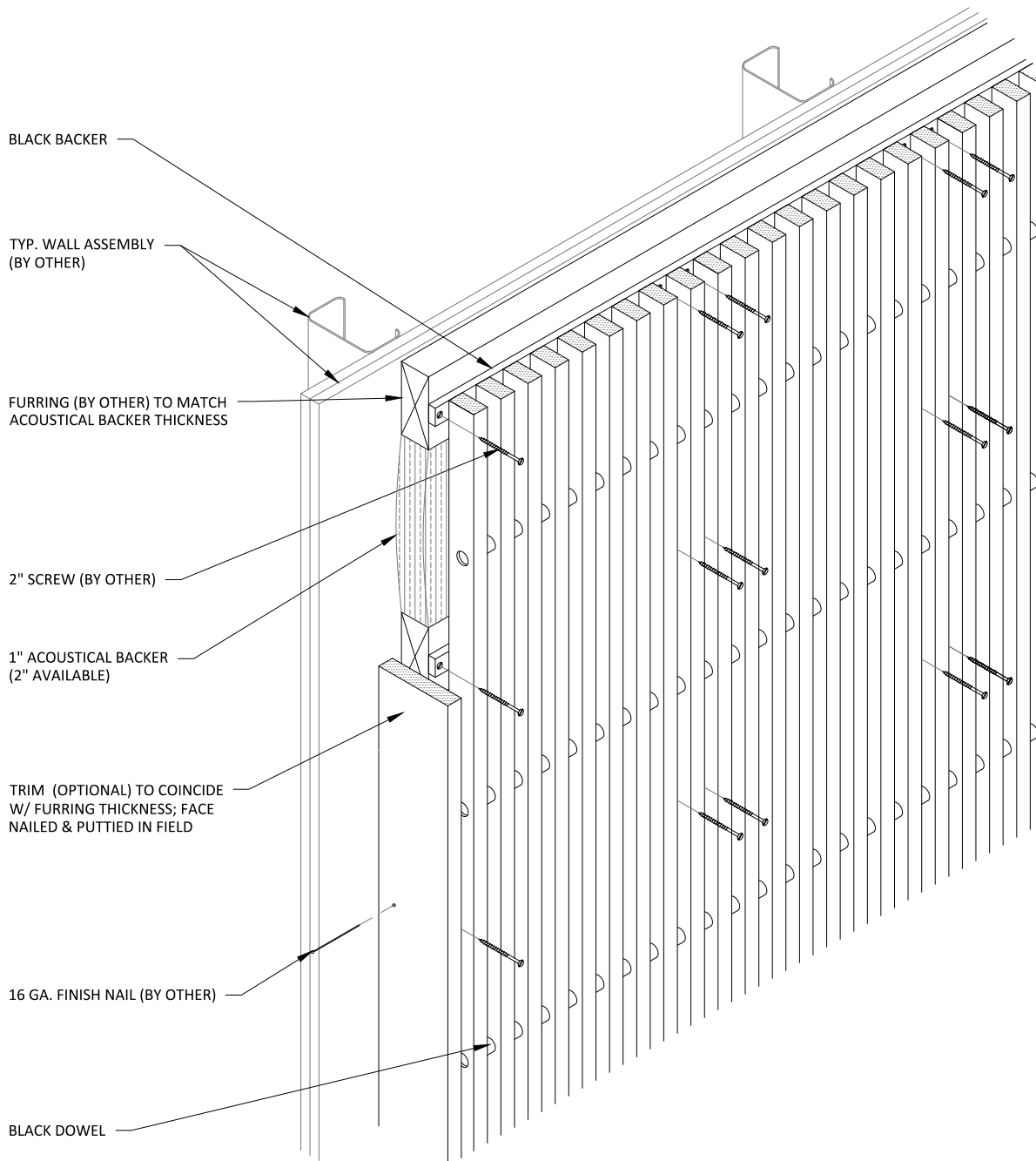
LIGHT SWITCH PENETRATION FIELD CUT

BLACK BACKER SCREWED
TO FURRING IN FIELD

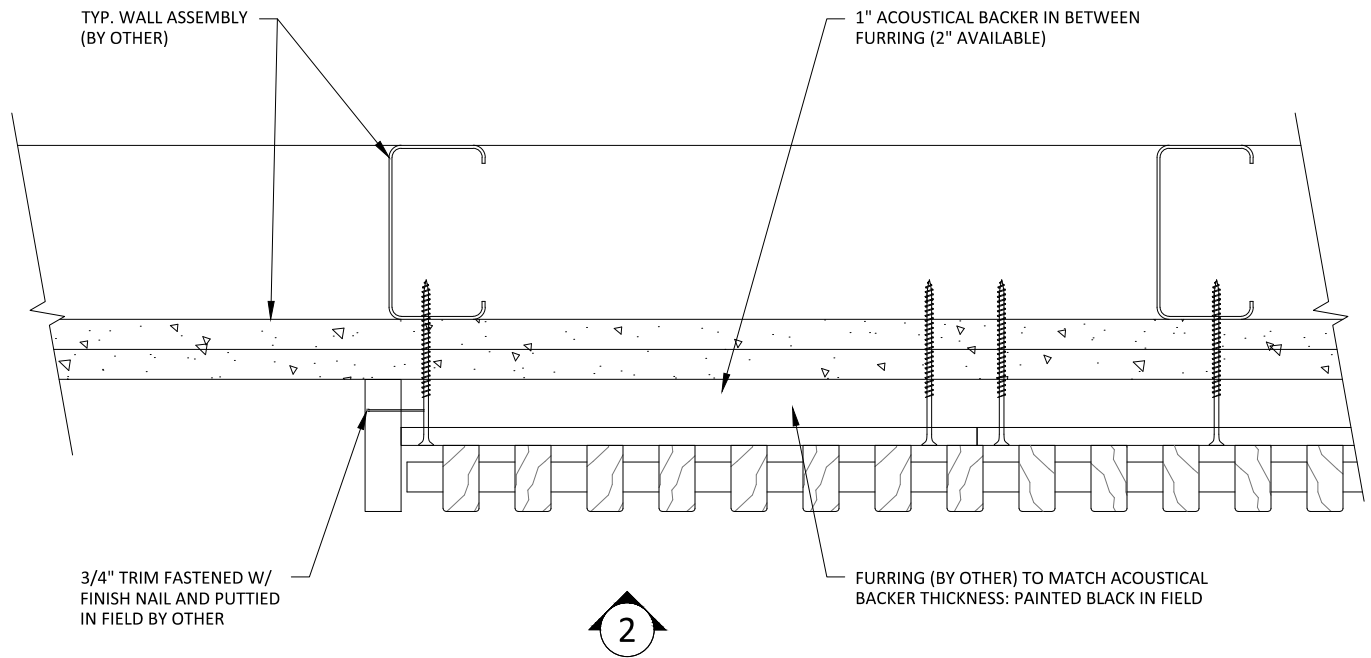
TYP. WALL SYSTEM (BY OTHER)



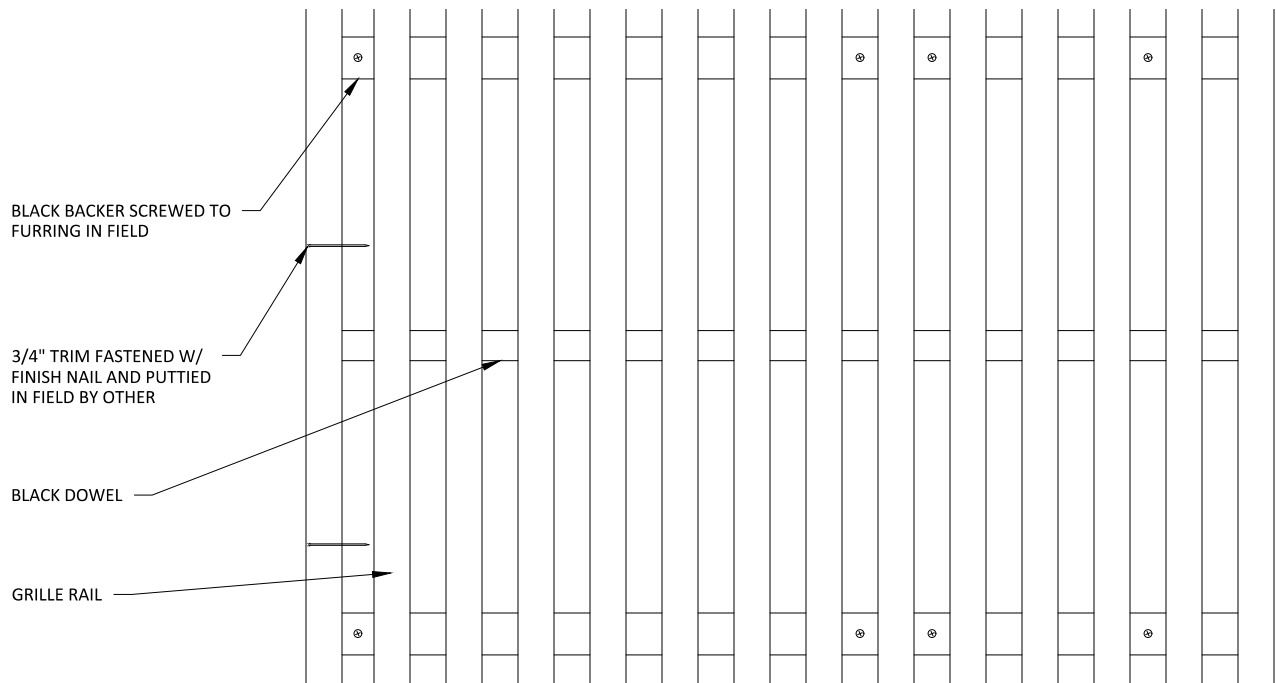
2 HORIZONTAL WALL SECTION @ LIGHT SWITCH
3" = 1'-0"



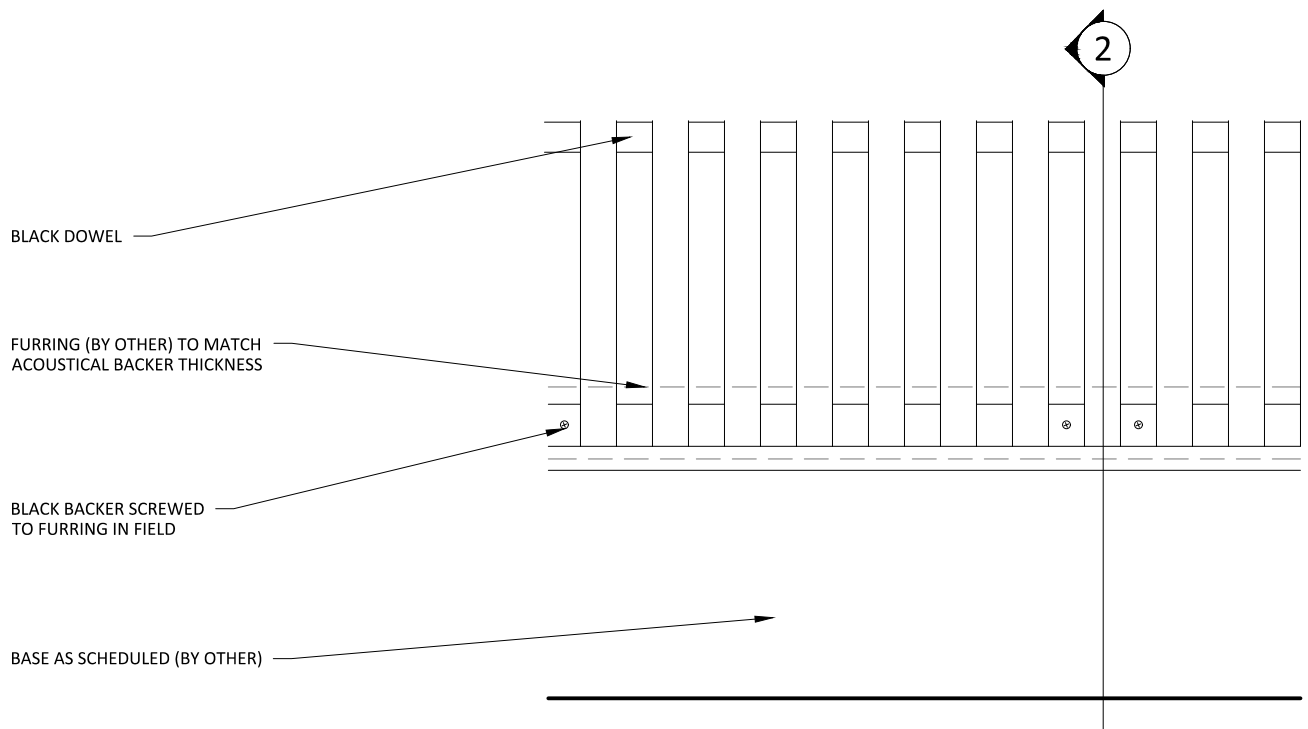
1 VERTICAL WALL ISOMETRIC - TYP.
1 1/2" = 1'-0"



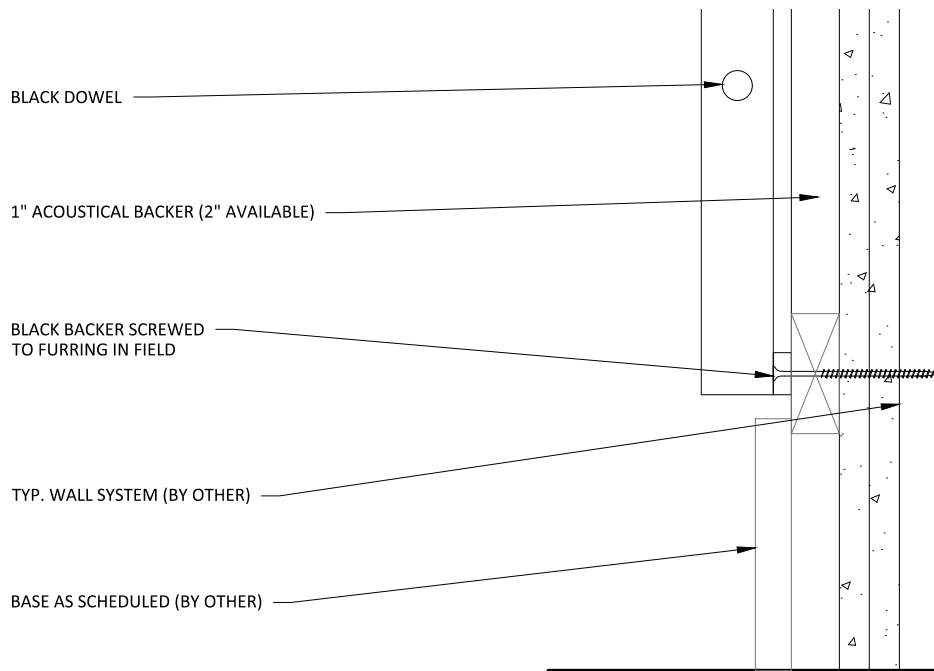
1 VERTICAL WALL PLAN @ TRIM
3" = 1'-0"



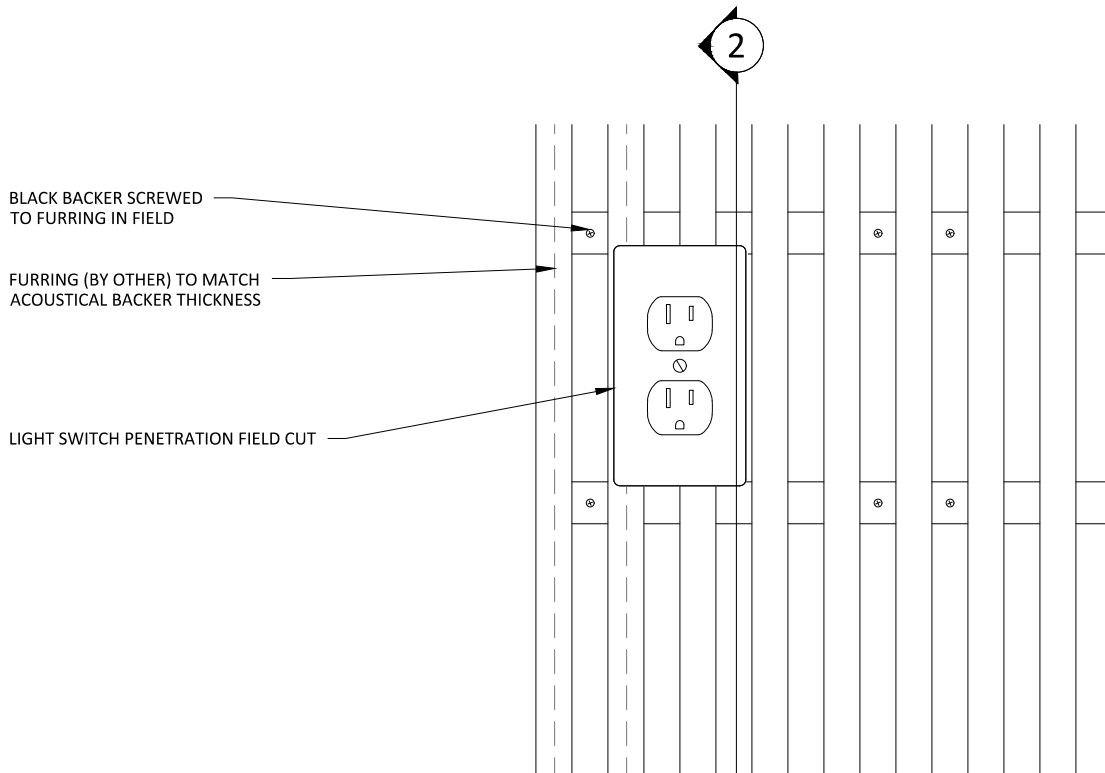
2 VERTICAL WALL ELEVATION @ TRIM
3" = 1'-0"



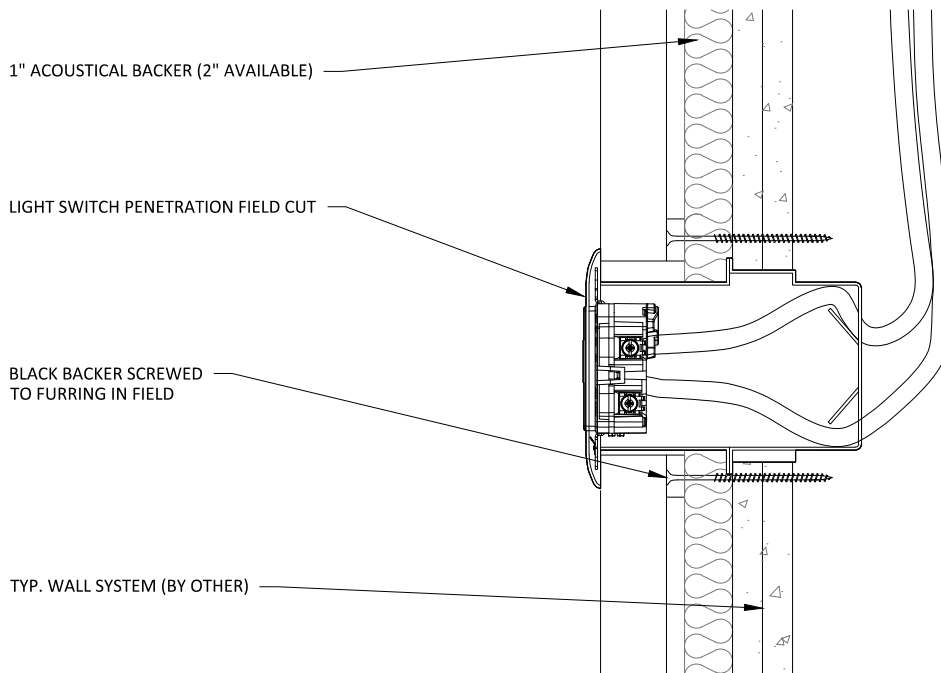
1 VERTICAL WALL PLAN @ TRIM
3" = 1'-0"



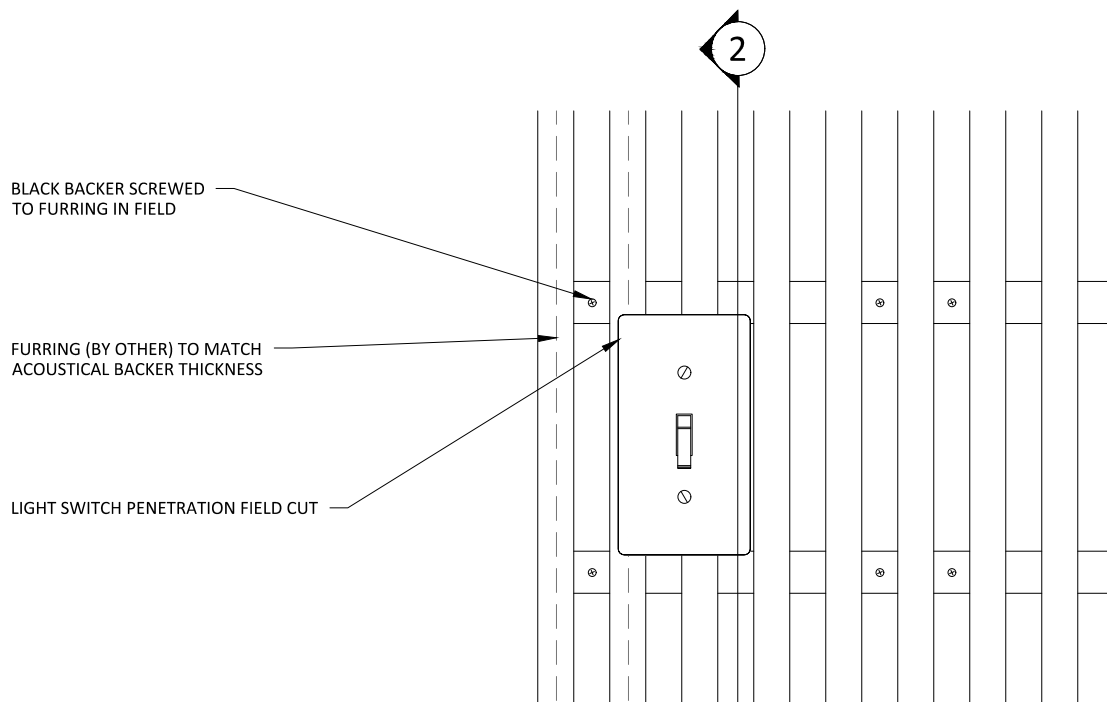
2 VERTICAL WALL ELEVATION @ TRIM
3" = 1'-0"



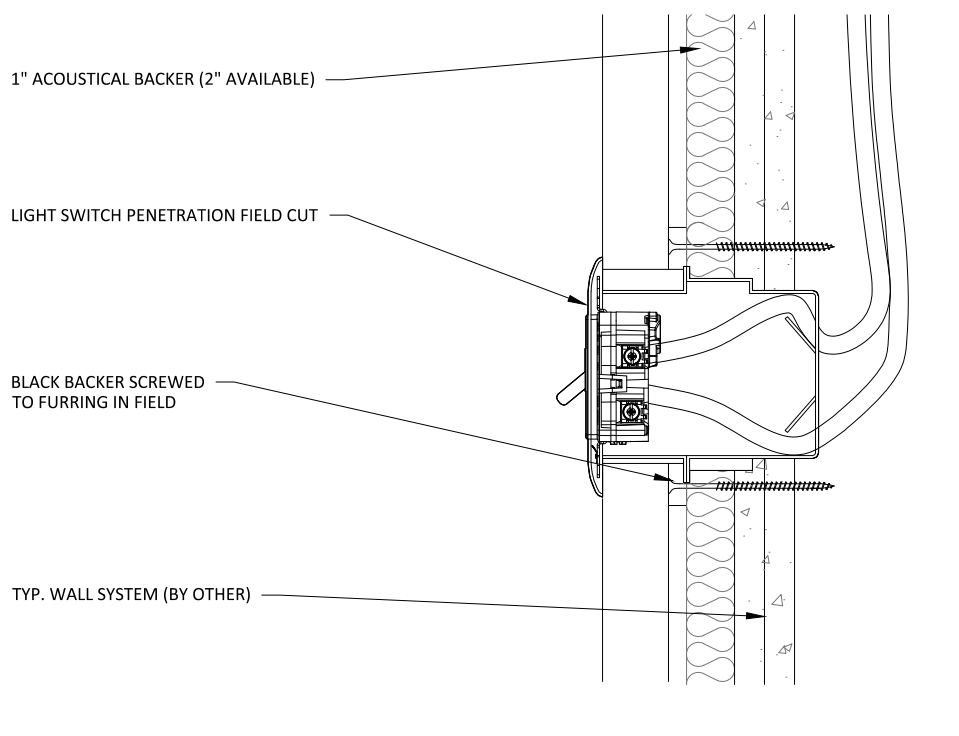
1 VERTICAL WALL ELEVATION @ OUTLET
3" = 1'-0"



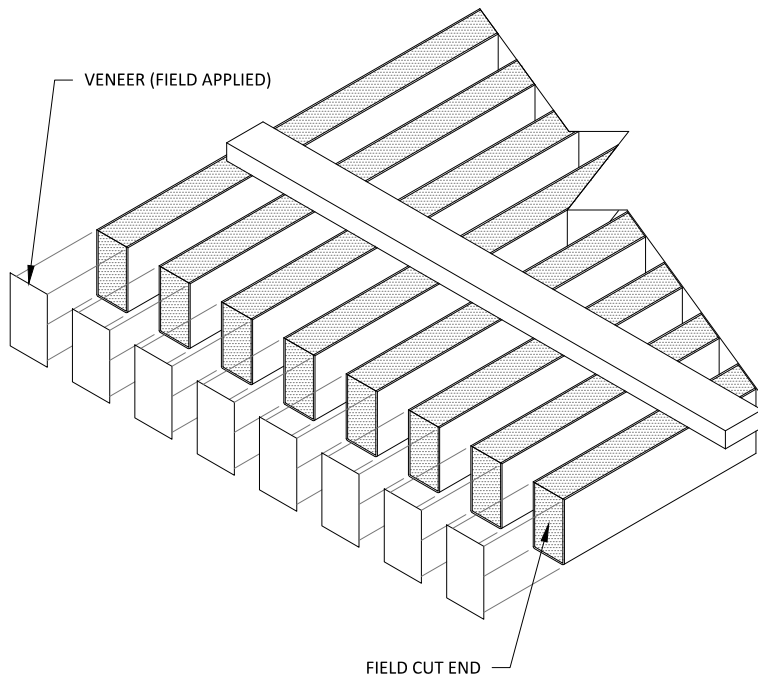
2 VERTICAL WALL SECTION @ OUTLET
3" = 1'-0"



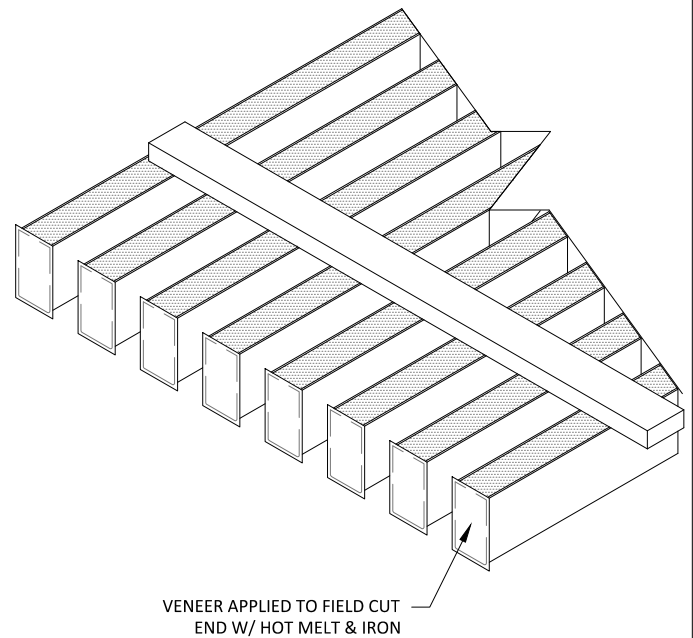
1 VERTICAL WALL ELEVATION @ LIGHT SWITCH
3" = 1'-0"



2 VERTICAL WALL SECTION @ LIGHT SWITCH
3" = 1'-0"

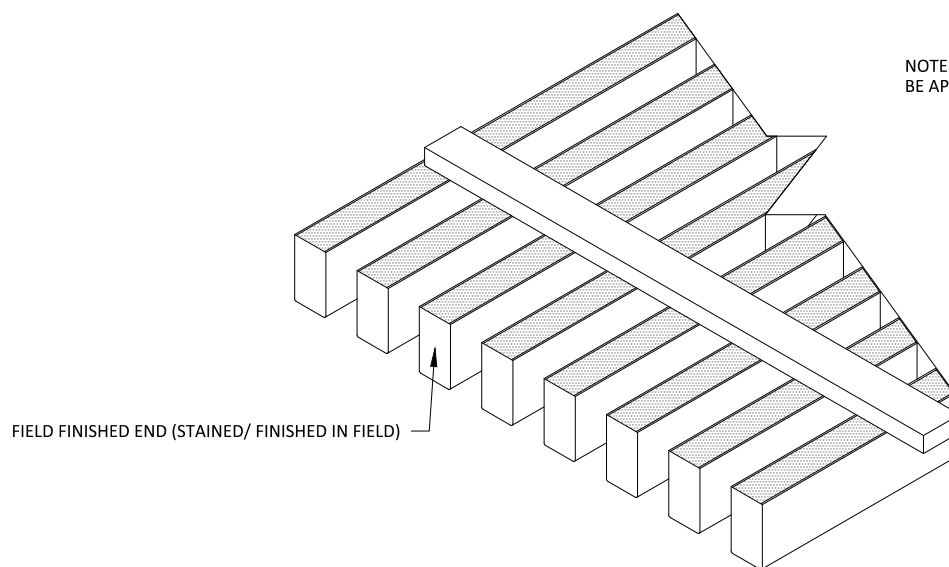


1 STEP 1
3" = 1'-0"



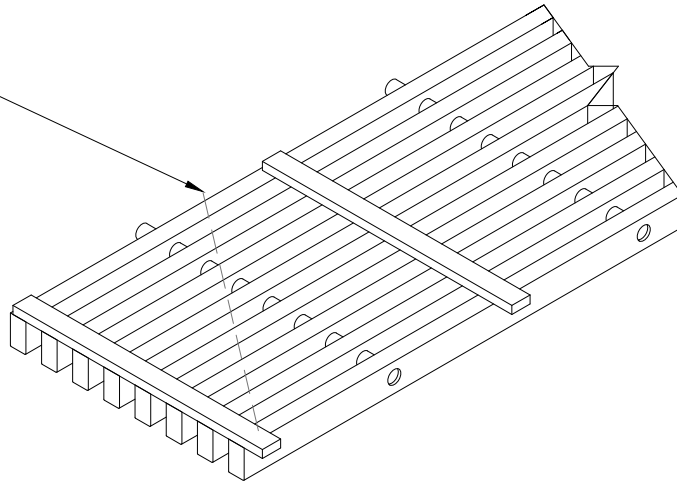
2 STEP 2
3" = 1'-0"

NOTE: FOR SOLID WOOD RAILS, NO VENEER NEEDS TO BE APPLIED - INSTEAD, REFINISH THE CUT END IN FIELD



3 STEP 3
3" = 1'-0"

DESIRED FIELD CUT ANGLE

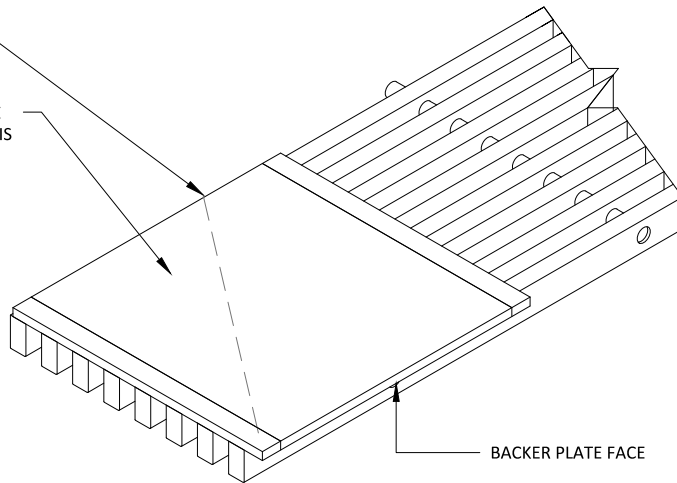


1 ANGLE-CUT STEP 1

1 1/2" = 1'-0"

DESIRED FIELD CUT ANGLE

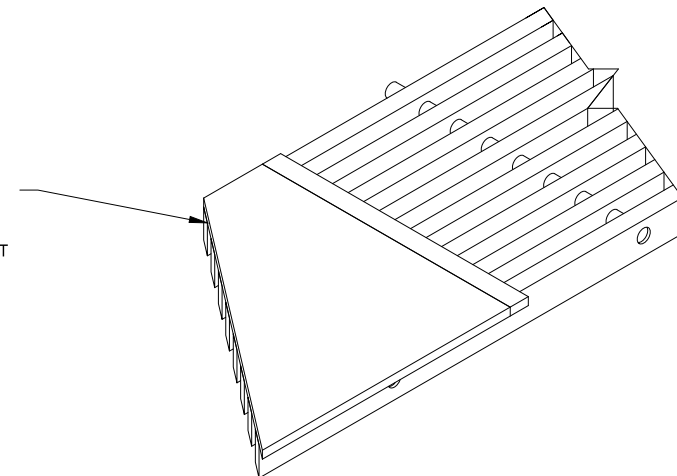
STAPLE 3/8" THICK PLYWOOD BACKER PLATE (BY OTHER) TO GRILLE RAILS. BACKER PLATE IS TO BE PAINTED BLACK ON FACE.



2 ANGLE-CUT STEP 2

1 1/2" = 1'-0"

ONCE BACKER PLATE IS FASTENED TO GRILLE PANEL, CUT DESIRED LINE AND FINISH ENDS AS SHOWN IN THE FIELD FINISHED END INSTRUCTIONS IN THIS STANDARD DETAIL SET



3 ANGLE-CUT STEP 3

1 1/2" = 1'-0"