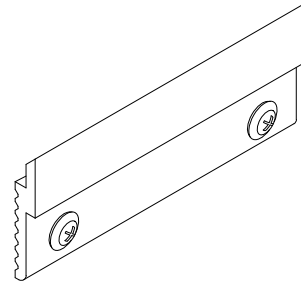
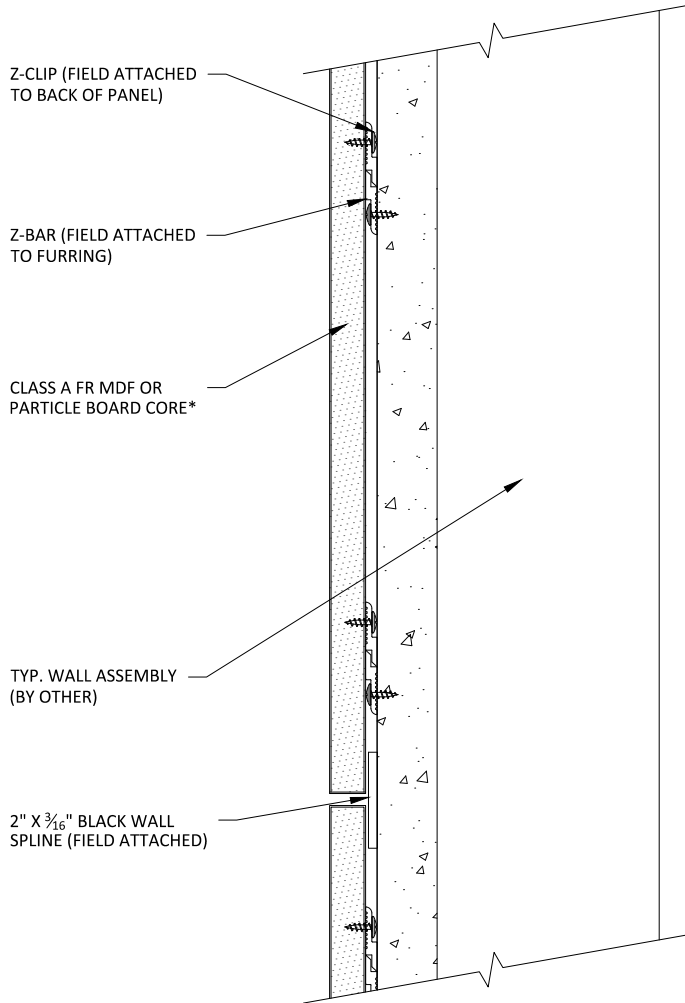


* PANELS MAY BE PERFORATED (AS SPECIFIED) IN WHICH CASE, ACOUSTICAL BACKER IS RECOMMENDED (1" OR 2" OPTIONS)

** 1" ACOUSTICAL BACKER RECOMMENDED FOR USE WITH PERFORATED PANELS (2" AVAILABLE)



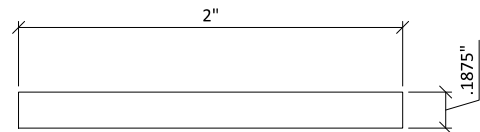
2 Z-CLIP DETAIL
6" = 1'-0"



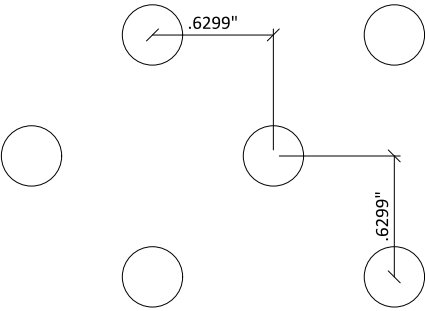
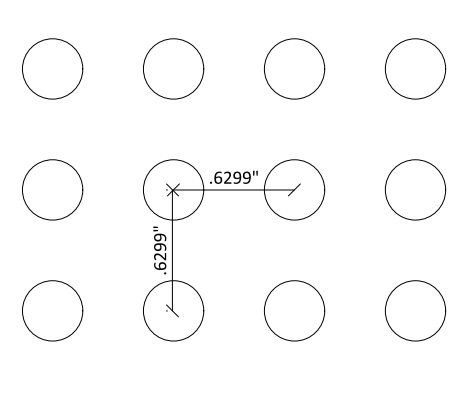
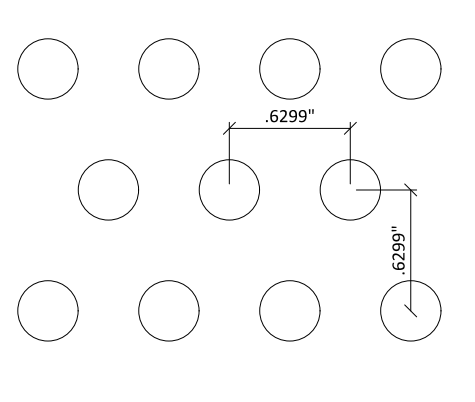
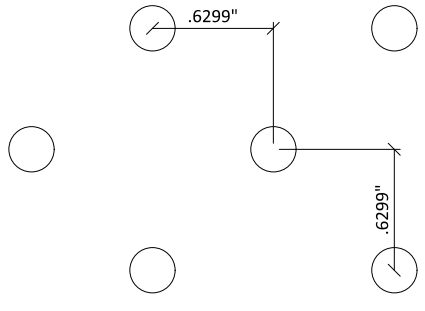
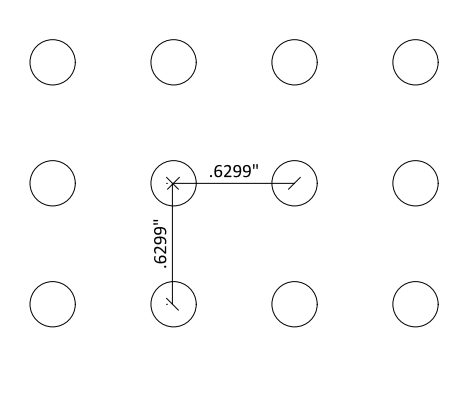
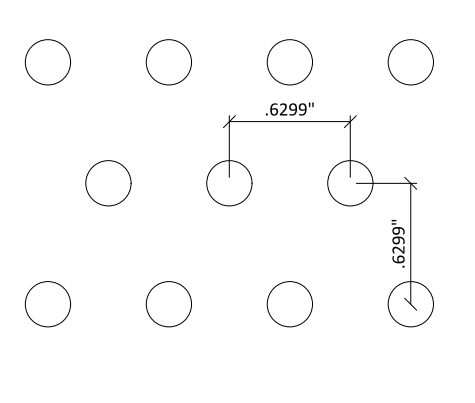
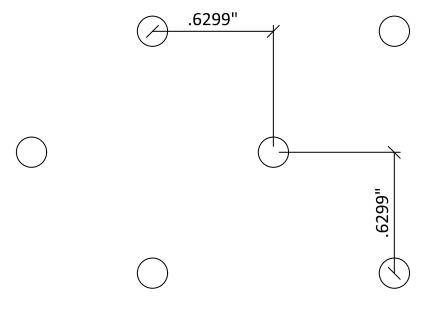
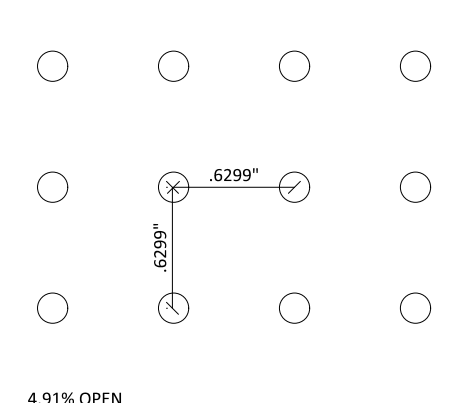
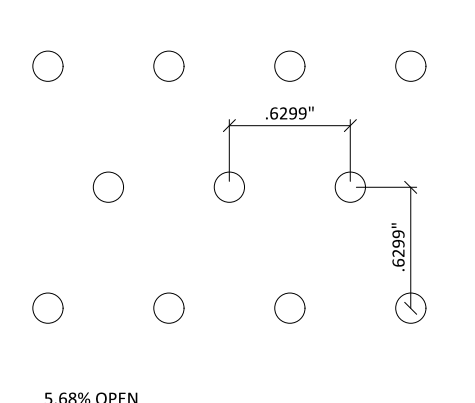
1 TYPICAL SECTION
3" = 1'-0"



3 Z-BAR & Z-CLIP PROFILE
1' = 1'-0"



4 WALL SPLINE PROFILE
1' = 1'-0"

 <p>9.81% OPEN</p>	 <p>19.63% OPEN</p>	 <p>22.72% OPEN</p>
DIAMOND: 8MM DIA./16MM SPACING	SQUARE: 8MM DIA./16MM SPACING	STAGGERED: 8MM DIA./16MM SPACING
 <p>5.52% OPEN</p>	 <p>11.04% OPEN</p>	 <p>12.78% OPEN</p>
DIAMOND: 6MM DIA./16MM SPACING	SQUARE: 6MM DIA./16MM SPACING	STAGGERED: 6MM DIA./16MM SPACING
 <p>2.45% OPEN</p>	 <p>4.91% OPEN</p>	 <p>5.68% OPEN</p>
DIAMOND: 4MM DIA./16MM SPACING	SQUARE: 4MM DIA./16MM SPACING	STAGGERED: 4MM DIA./16MM SPACING

<p>2.45% OPEN</p>	<p>4.91% OPEN</p>	<p>5.68% OPEN</p>
DIAMOND: 8MM DIA./32MM SPACING	SQUARE: 8MM DIA./32MM SPACING	STAGGERED: 8MM DIA./32MM SPACING
<p>1.38% OPEN</p>	<p>2.76% OPEN</p>	<p>3.2% OPEN</p>
DIAMOND: 6MM DIA./32MM SPACING	SQUARE: 6MM DIA./32MM SPACING	STAGGERED: 6MM DIA./32MM SPACING
<p>0.61% OPEN</p>	<p>1.23% OPEN</p>	<p>1.42% OPEN</p>
DIAMOND: 4MM DIA./32MM SPACING	SQUARE: 4MM DIA./32MM SPACING	STAGGERED: 4MM DIA./32MM SPACING

2" X $\frac{3}{16}$ " WALL SPLINE (PAINTED BLACK)

TYP. WALL ASSEMBLY (BY OTHER)

FURRING (BY OTHER) TO MATCH
ACOUSTICAL BACKER THICKNESS

ACOUSTICAL BACKER*

Z-BAR (FIELD ATTACHED TO FURRING)

TRIM (OPTIONAL) TO COINCIDE
W/ FURRING THICKNESS; FACE
NAILED & PUTTIED IN FIELD

16 GA. FINISH NAIL (BY OTHER)

* 1" ACOUSTICAL BACKER RECOMMENDED
FOR USE WITH PERFORATED PANELS (2"
AVAILABLE)

1 WALL SYSTEM ISOMETRIC
1 1/2" = 1'-0"

FUSION (WALL SYSTEM) - ISOMETRIC

SCALE: AS NOTED

LAST REVISED: 5/19/2020

DO NOT SCALE DRAWING. FIGURED DIMENSIONS ARE TO BE FOLLOWED. READ THIS DRAWING IN CONNECTION WITH GENERAL ARCHITECTURAL PLANS, STRUCTURAL PLANS, AND OTHER RELATED DRAWINGS. THESE DRAWINGS REPRESENT ASI'S UNDERSTANDING AND INTERPRETATION OF THE ARCHITECTURAL DRAWINGS AND HOW ASI PRODUCTS RELATE TO THE PROJECT. COPYRIGHT ASI © 2020

SHEET NUMBER

4

DRAWN BY: BH

TYP. WALL ASSEMBLY (BY OTHER)

FURRING (BY OTHER)
TO MATCH ACOUSTICAL
BACKER THICKNESS

TRIM (OPTIONAL) TO COINCIDE
W/ FURRING THICKNESS; FACE
NAILED & PUTTIED IN FIELD

2" X $\frac{3}{16}$ " WALL SPLINE
(PAINTED BLACK)

Z-CLIP (FIELD ATTACHED
TO PANEL)

Z-BAR (FIELD
ATTACHED TO
FURRING)

2

1 TRIM CONDITION PLAN

3" = 1'-0"

Z-CLIP (FIELD ATTACHED TO PANEL)

Z-BAR (FIELD ATTACHED TO FURRING)

FURRING (BY OTHER) TO MATCH
ACOUSTICAL BACKER THICKNESS

2" X $\frac{3}{16}$ " WALL SPLINE (PAINTED BLACK)

$\frac{3}{4}$ " TRIM FASTENED W/
FINISH NAIL AND PUTTIED
IN FIELD BY OTHER

2 TRIM CONDITION ELEVATION

3" = 1'-0"

** 1" ACOUSTICAL BACKER
RECOMMENDED FOR USE
WITH PERFORATED PANELS
(2" AVAILABLE)

Z-BAR (FIELD ATTACHED TO FURRING)

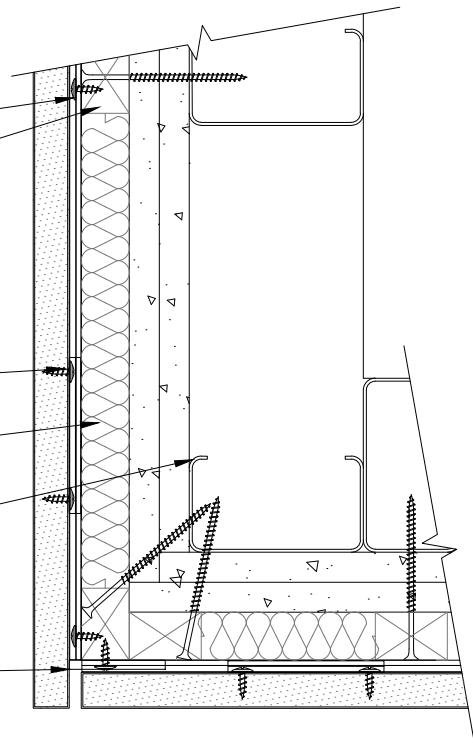
FURRING (BY OTHER) TO MATCH
ACOUSTICAL BACKER THICKNESS

Z-CLIP (FIELD ATTACHED TO PANEL)

ACOUSTICAL BACKER**

TYP. WALL ASSEMBLY (BY OTHER)

2" X 3/16" WALL SPLINE (PAINTED BLACK)



1 OUTSIDE CORNER DETAIL

3" = 1'-0"

** 1" ACOUSTICAL BACKER
RECOMMENDED FOR USE
WITH PERFORATED PANELS
(2" AVAILABLE)

FURRING (BY OTHER) TO MATCH
ACOUSTICAL BACKER THICKNESS

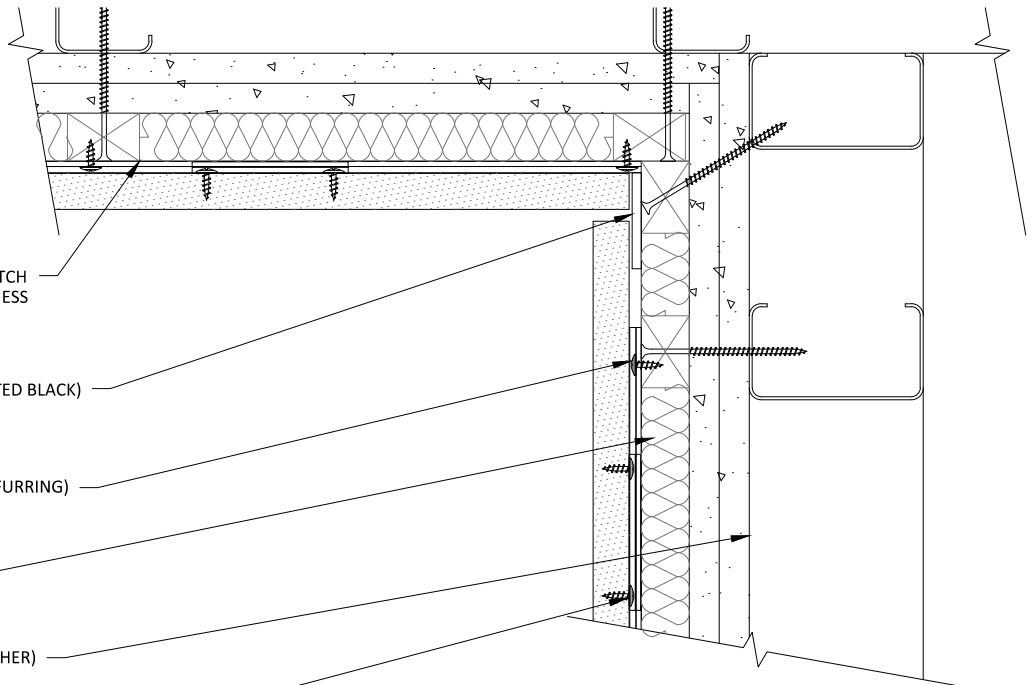
2" X 3/16" WALL SPLINE (PAINTED BLACK)

Z-BAR (FIELD ATTACHED TO FURRING)

ACOUSTICAL BACKER**

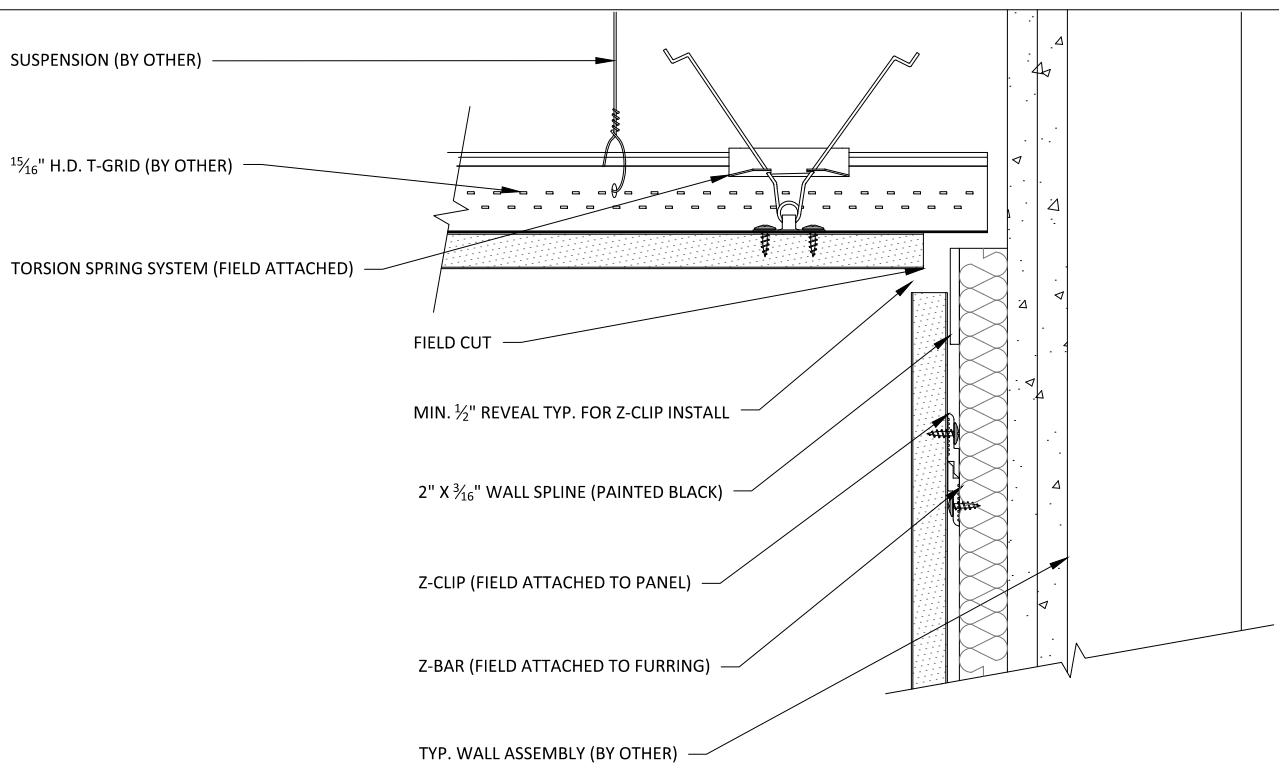
TYP. WALL ASSEMBLY (BY OTHER)

Z-CLIP (FIELD ATTACHED TO PANEL)



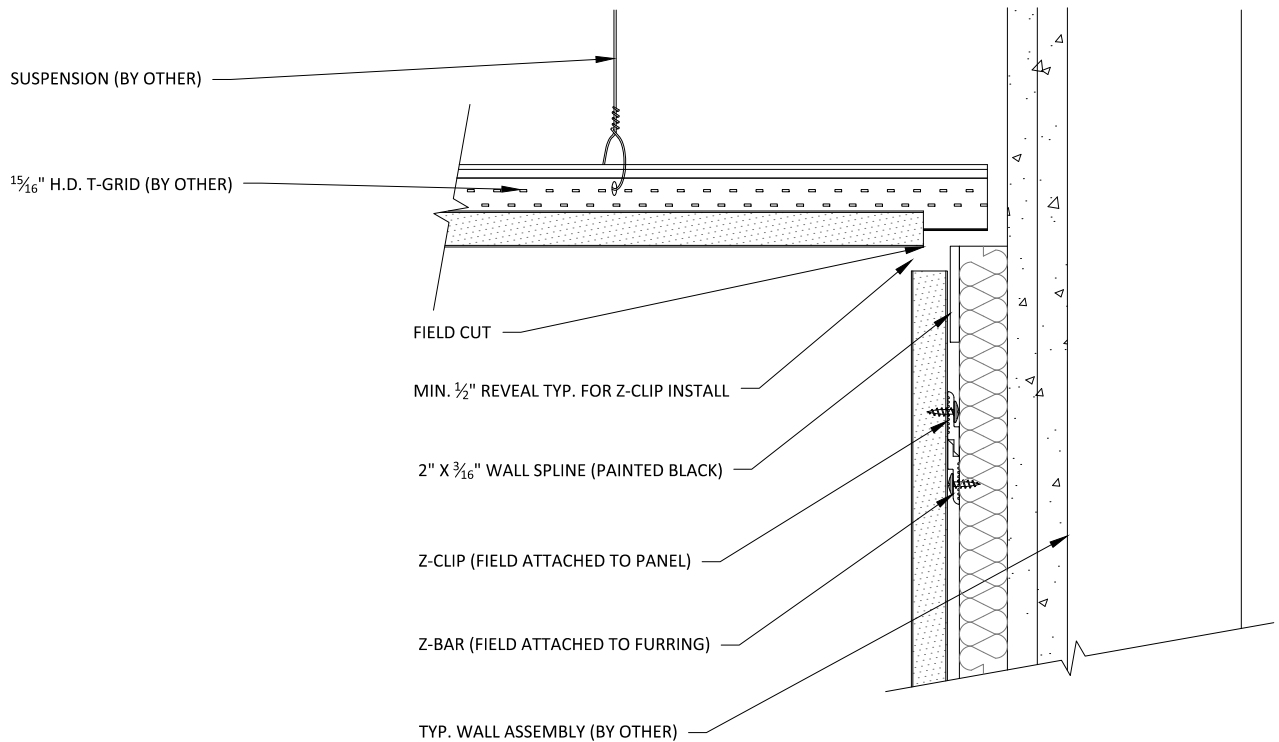
2 INSIDE CORNER DETAIL

3" = 1'-0"



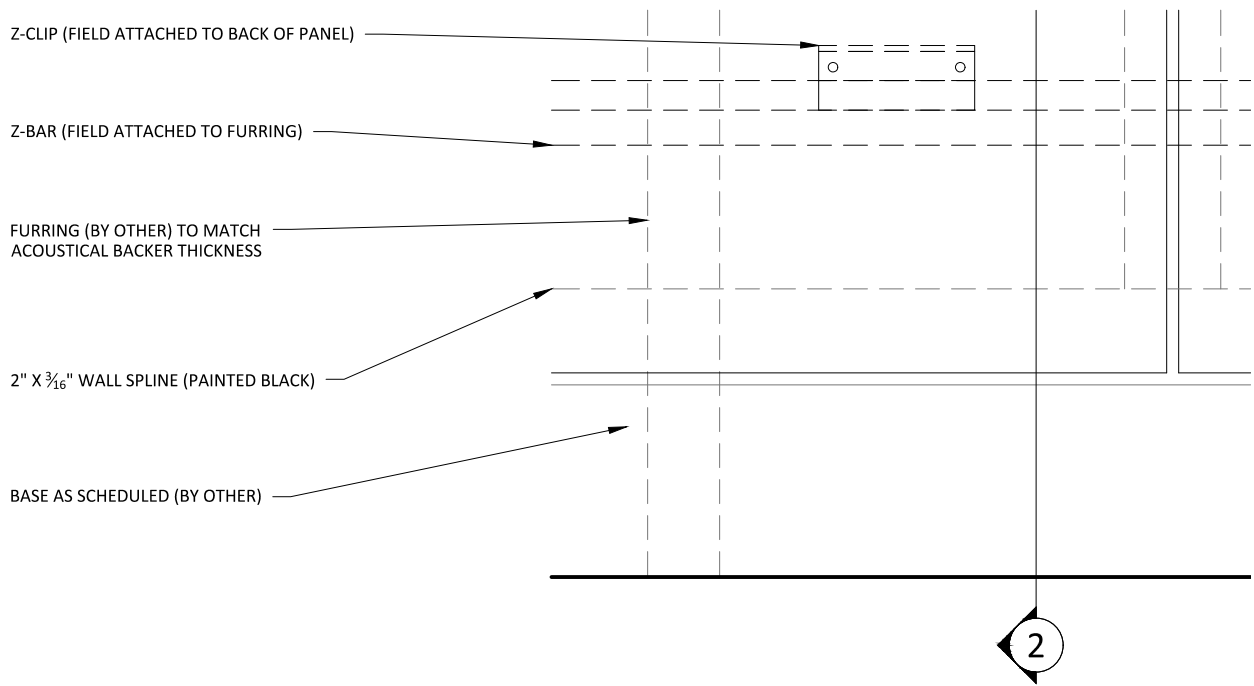
1 WALL-TO-TORSION SPRING CEILING DETAIL

3" = 1'-0"



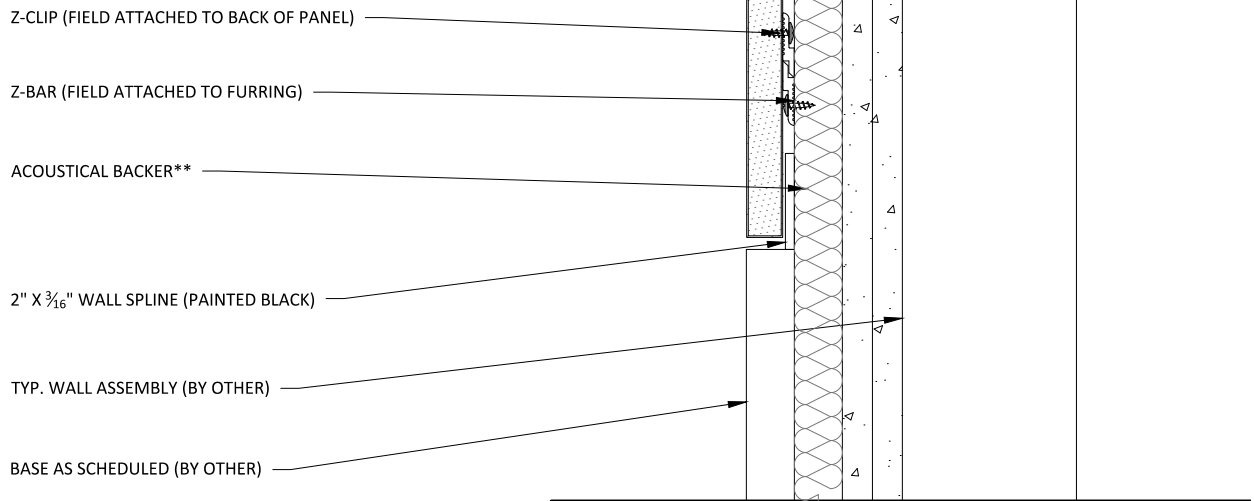
2 WALL-TO-SPLINED (OR RABBETED) PANEL CEILING DETAIL

3" = 1'-0"



1 BASEBOARD DETAIL ELEVATION 3" = 1'-0"

** 1" ACOUSTICAL BACKER RECOMMENDED FOR USE WITH PERFORATED PANELS (2" AVAILABLE)



2 BASEBOARD DETAIL SECTION 3" = 1'-0"

Z-CLIP (FIELD ATTACHED TO BACK OF PANEL)

Z-BAR (FIELD ATTACHED TO FURRING)

FURRING (BY OTHER) TO MATCH
ACOUSTICAL BACKER THICKNESS

CUSTOMER PROVIDED FIXTURE
(FIELD CUT PENETRATION)

2" X 3/16" WALL SPLINE (PAINTED BLACK)

2

1

OUTLET ELEVATION

3" = 1'-0"

** 1" ACOUSTICAL BACKER RECOMMENDED FOR
USE WITH PERFORATED PANELS (2" AVAILABLE)

Z-CLIP (FIELD ATTACHED TO BACK OF PANEL)

Z-BAR (FIELD ATTACHED TO FURRING)

ACOUSTICAL BACKER**

CUSTOMER PROVIDED FIXTURE
(FIELD CUT PENETRATION)

TYP. WALL ASSEMBLY (BY OTHER)

2" X 3/16" WALL SPLINE (PAINTED BLACK)

2

OUTLET SECTION

3" = 1'-0"

Z-CLIP (FIELD ATTACHED TO BACK OF PANEL)

Z-BAR (FIELD ATTACHED TO FURRING)

FURRING (BY OTHER) TO MATCH
ACOUSTICAL BACKER THICKNESS

CUSTOMER PROVIDED FIXTURE
(FIELD CUT PENETRATION)

2" X 3/16" WALL SPLINE (PAINTED BLACK)

2

1

LIGHT SWITCH ELEVATION

3" = 1'-0"

** 1" ACOUSTICAL BACKER RECOMMENDED FOR
USE WITH PERFORATED PANELS (2" AVAILABLE)

Z-CLIP (FIELD ATTACHED TO BACK OF PANEL)

Z-BAR (FIELD ATTACHED TO FURRING)

ACOUSTICAL BACKER**

CUSTOMER PROVIDED FIXTURE
(FIELD CUT PENETRATION)

TYP. WALL ASSEMBLY (BY OTHER)

2" X 3/16" WALL SPLINE (PAINTED BLACK)

2

LIGHT SWITCH SECTION

3" = 1'-0"