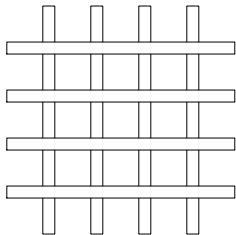
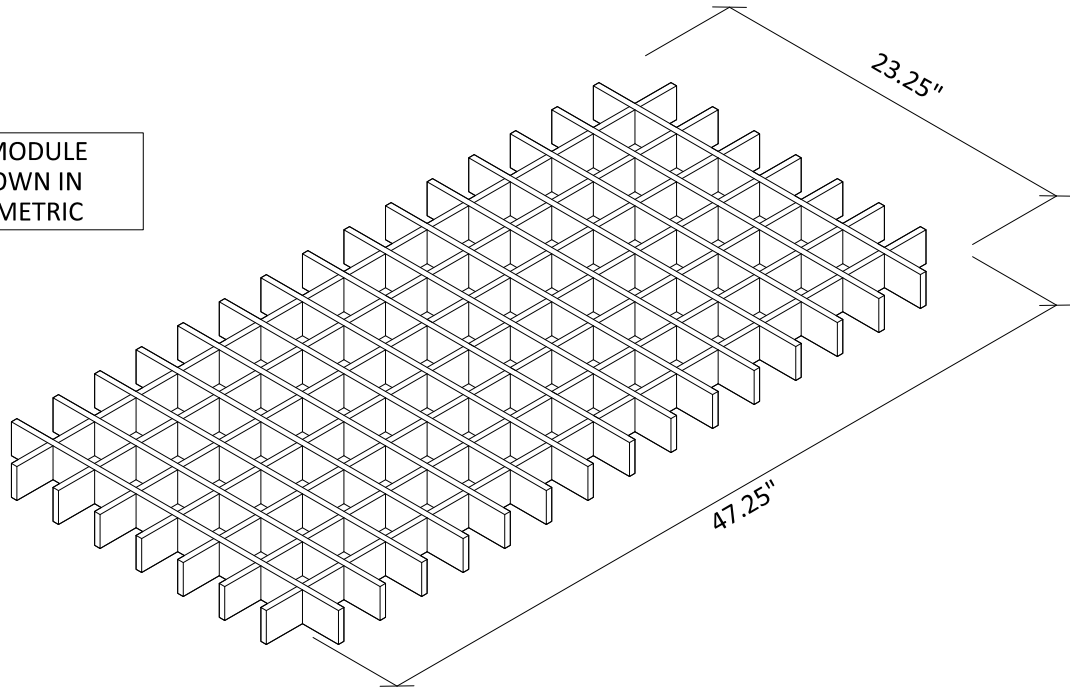
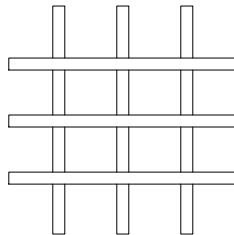


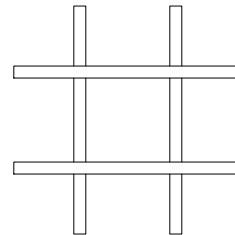
3" MODULE  
SHOWN IN  
ISOMETRIC



3" MODULE

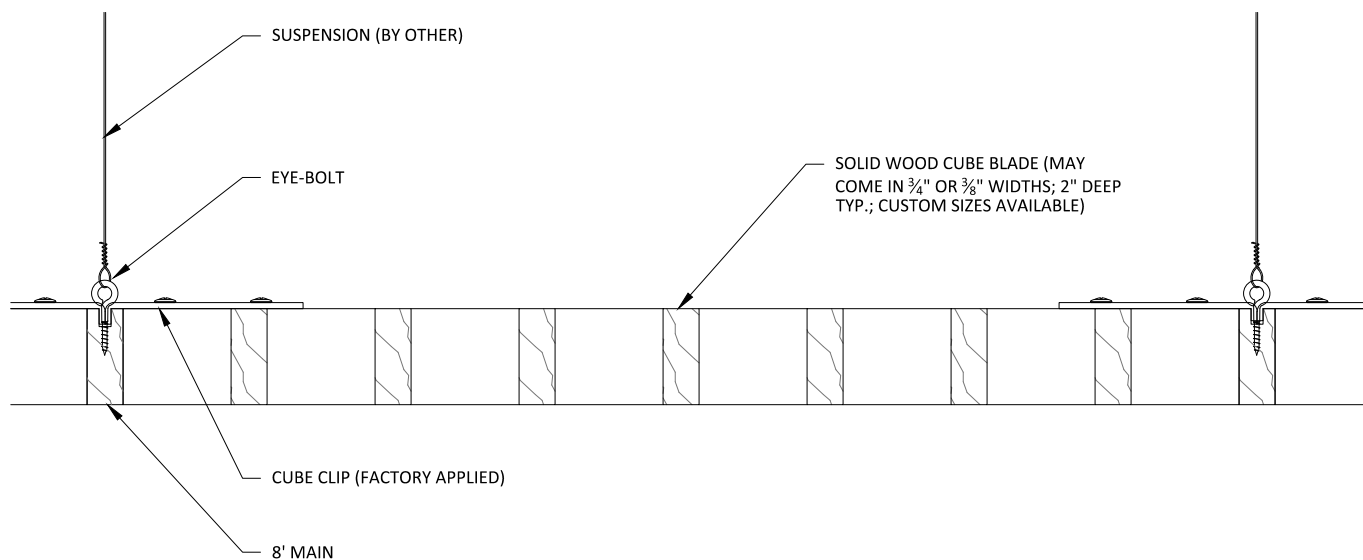


4" MODULE



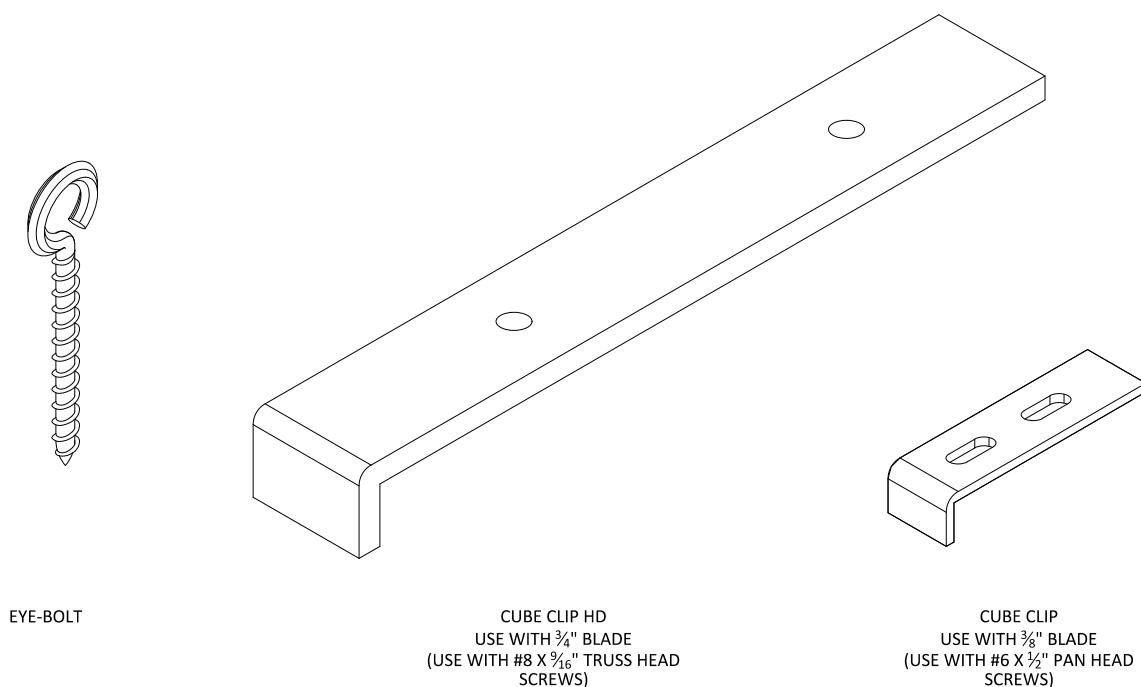
6" MODULE

ALL PANELS ARE DESIGNED FOR A 2X4 GRID  
ALL PANELS ARE 2" IN DEPTH AND MAY BE  
CONSTRUCTED USING  $\frac{3}{8}$ " OR  $\frac{3}{4}$ " MATERIAL  
CUSTOM MODULES AVAILABLE



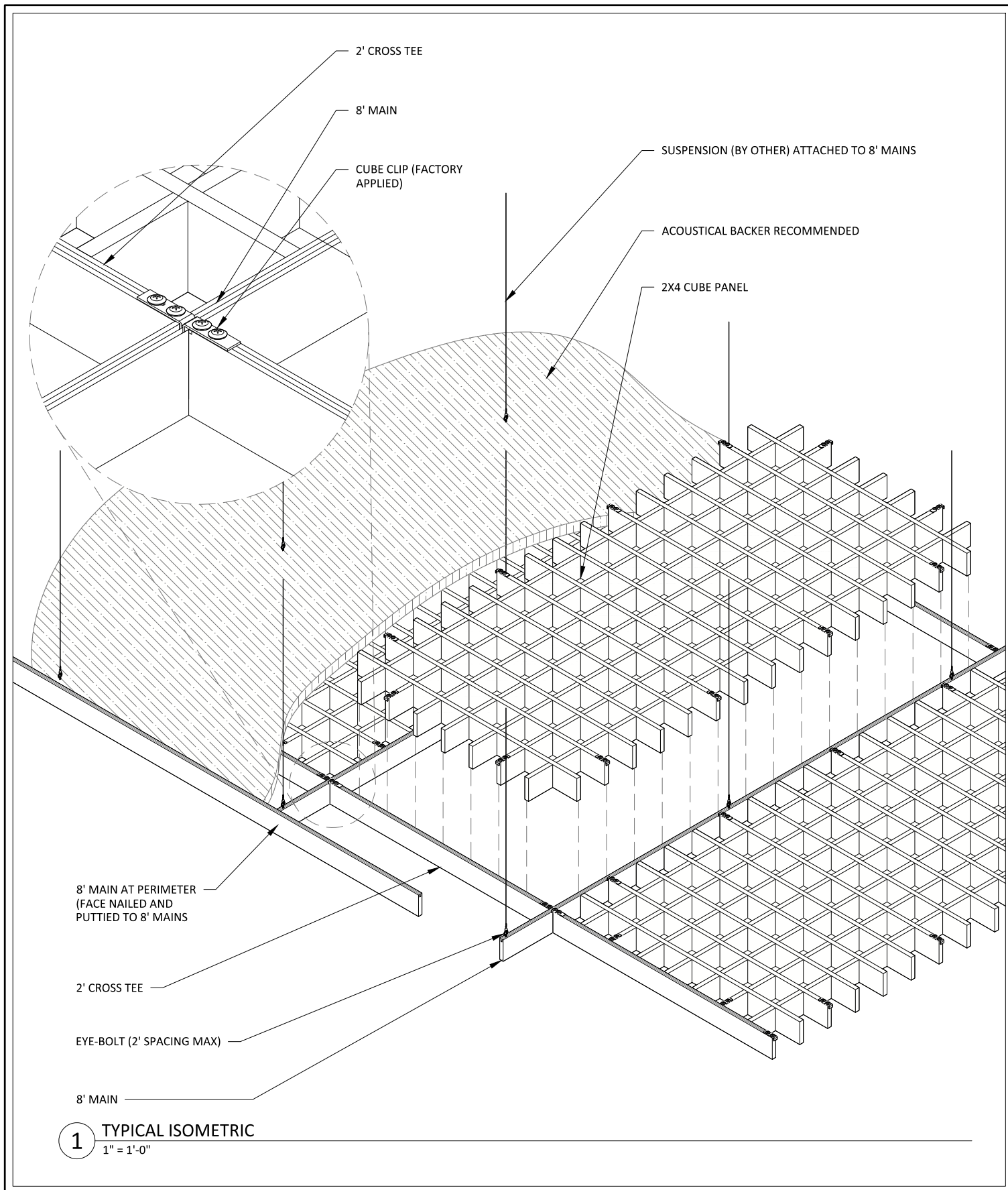
# 1 TYPICAL SECTION DETAIL

3" = 1'-0"



# 2 TYPICAL HARDWARE

1' = 1'-0"



## CUBE (MONOLITHIC) - TYPICAL ISOMETRIC

SCALE: AS NOTED

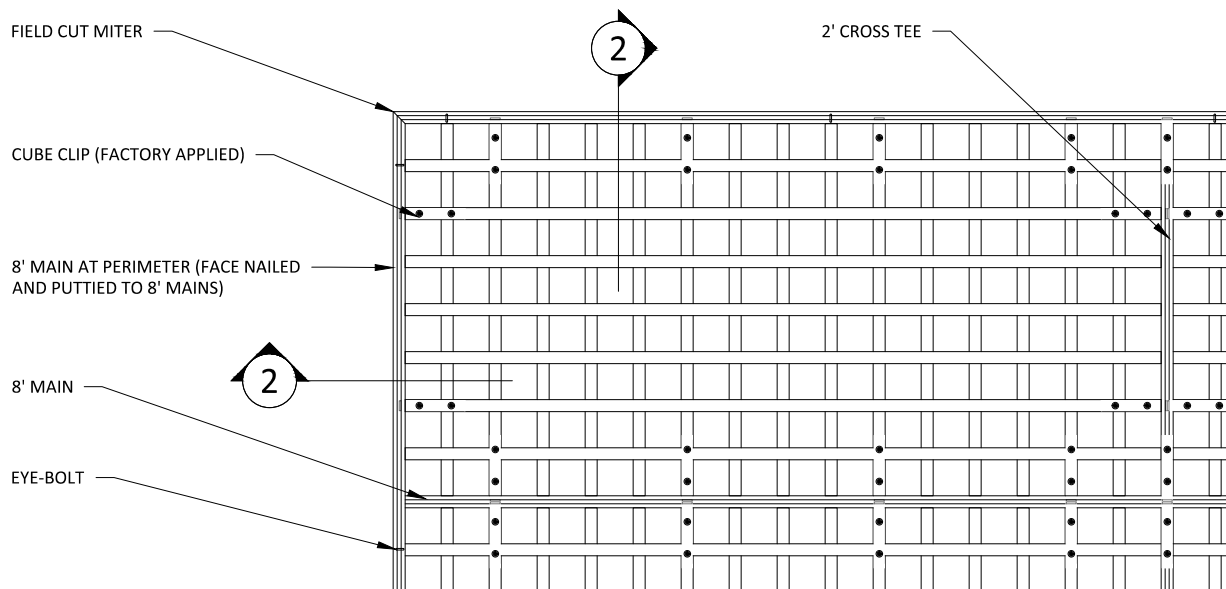
LAST REVISED: 8/7/2019

DO NOT SCALE DRAWING. FIGURED DIMENSIONS ARE TO BE FOLLOWED. READ THIS DRAWING IN CONNECTION WITH GENERAL ARCHITECTURAL PLANS, STRUCTURAL PLANS, AND OTHER RELATED DRAWINGS. THESE DRAWINGS REPRESENT ASI'S UNDERSTANDING AND INTERPRETATION OF THE ARCHITECTURAL DRAWINGS AND HOW ASI PRODUCTS RELATE TO THE PROJECT. COPYRIGHT ASI © 2019

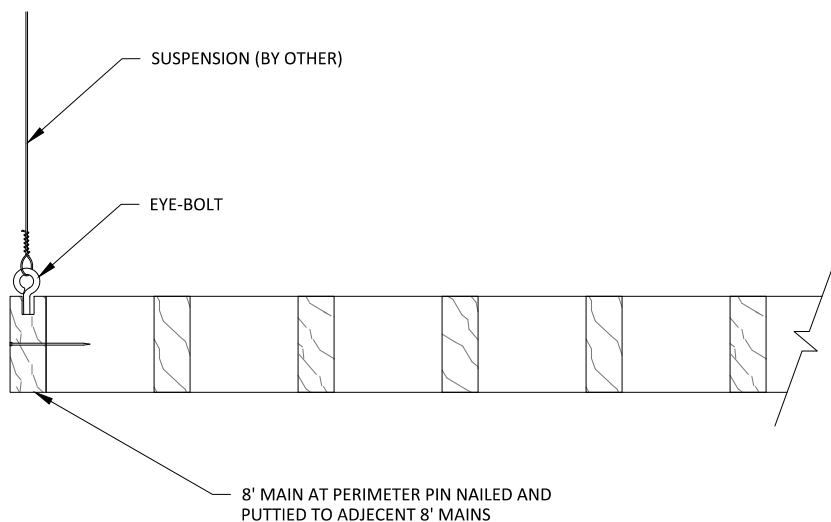
SHEET NUMBER

**3**

DRAWN BY: BH



**1** TRIM @ MITERED CORNER - PLAN  
1" = 1'-0"

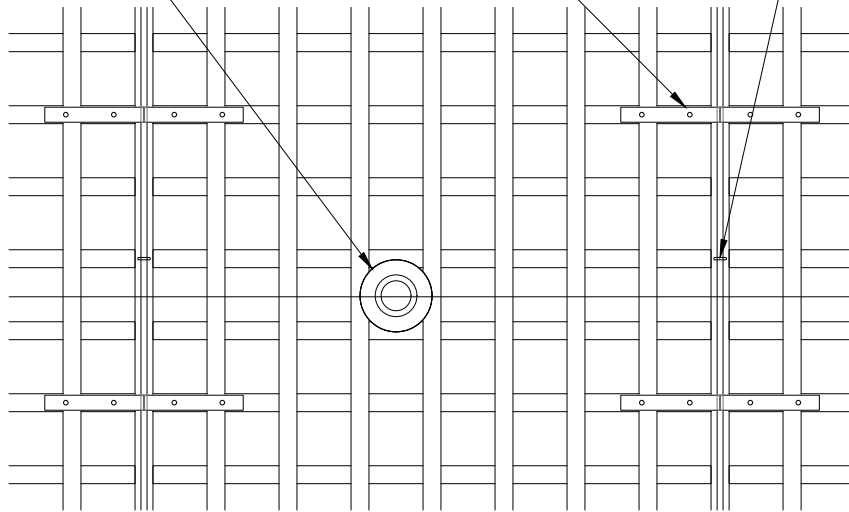


**2** EDGE CONDITION @ TRIM  
3" = 1'-0"

INDEPENDENTLY SUPPORTED CUSTOMER  
FIXTURE: FIELD CUT PENETRATION

CUBE CLIP (FACTORY APPLIED)

EYE-BOLT



1

## SPRINKLER HEAD DETAIL - PLAN VIEW

1 1/2" = 1'-0"

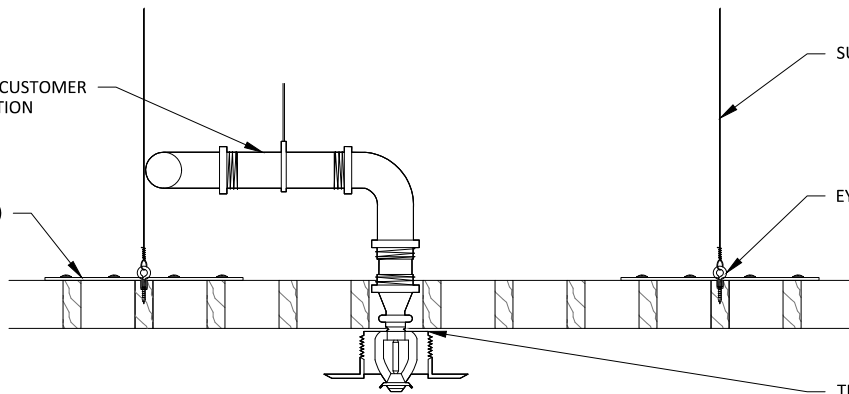
INDEPENDENTLY SUPPORTED CUSTOMER  
FIXTURE: FIELD CUT PENETRATION

CUBE CLIP (FACTORY APPLIED)

SUSPENSION (BY OTHER)

EYE-BOLT

TRIM PLATE (BY OTHER)



2

## SPRINKLER HEAD DETAIL - SECTION VIEW

1 1/2" = 1'-0"

# CUBE (MONOLITHIC) - SPRINKLER HEAD DETAILS

SHEET NUMBER

5

SCALE: AS NOTED

LAST REVISED: 8/7/2019

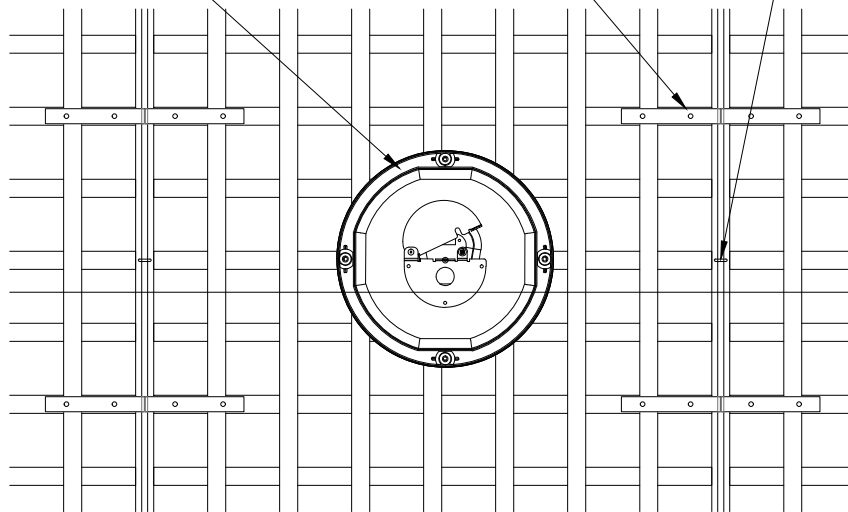
DRAWN BY: BH

DO NOT SCALE DRAWING. FIGURED DIMENSIONS ARE TO BE FOLLOWED. READ THIS DRAWING IN CONNECTION WITH GENERAL ARCHITECTURAL PLANS, STRUCTURAL PLANS, AND OTHER RELATED DRAWINGS. THESE DRAWINGS REPRESENT ASI'S UNDERSTANDING AND INTERPRETATION OF THE ARCHITECTURAL DRAWINGS AND HOW ASI PRODUCTS RELATE TO THE PROJECT. COPYRIGHT ASI © 2019

INDEPENDENTLY SUPPORTED CUSTOMER  
FIXTURE: FIELD CUT PENETRATION

CUBE CLIP (FACTORY APPLIED)

EYE-BOLT



1 CAN LIGHT DETAIL - PLAN VIEW  
1 1/2" = 1'-0"

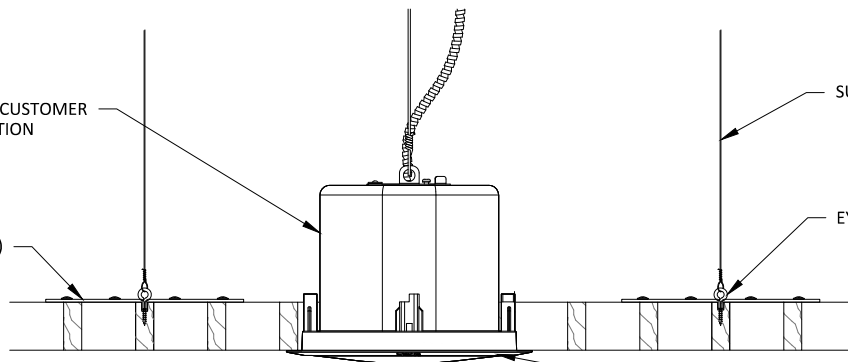
INDEPENDENTLY SUPPORTED CUSTOMER  
FIXTURE: FIELD CUT PENETRATION

CUBE CLIP (FACTORY APPLIED)

SUSPENSION (BY OTHER)

EYE-BOLT

TRIM PLATE (BY OTHER)



2 CAN LIGHT DETAIL - SECTION VIEW  
1 1/2" = 1'-0"

## CUBE (MONOLITHIC) - CAN LIGHT DETAILS

SCALE: AS NOTED

LAST REVISED: 8/7/2019

SHEET NUMBER

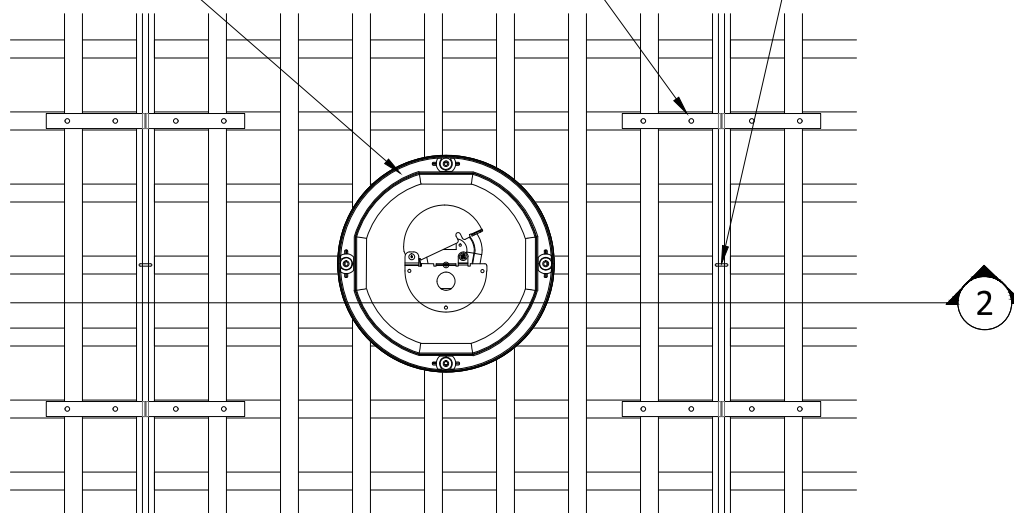
6

DRAWN BY: BH

INDEPENDENTLY SUPPORTED CUSTOMER  
FIXTURE: FIELD CUT PENETRATION

CUBE CLIP (FACTORY APPLIED)

EYE-BOLT



1

## PENDANT LIGHT DETAIL - PLAN VIEW

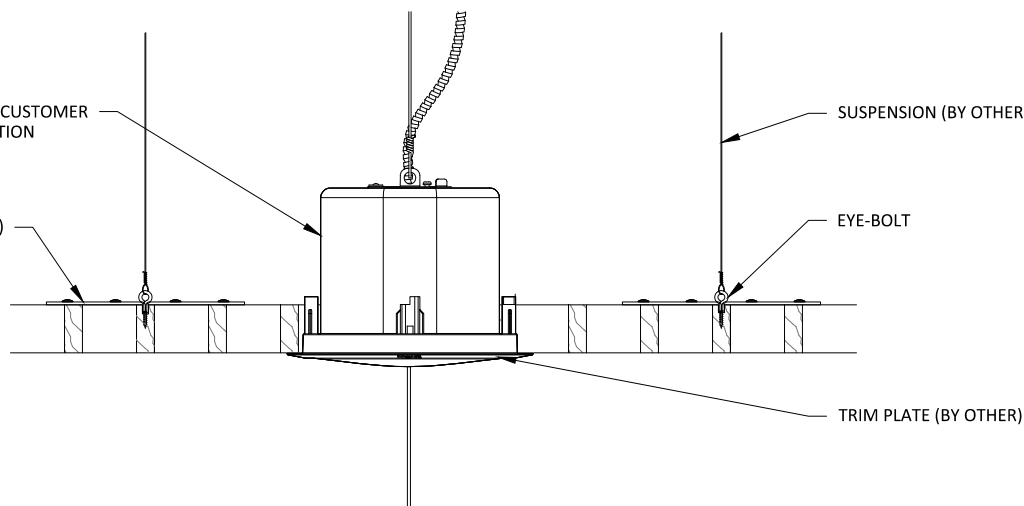
1 1/2" = 1'-0"

INDEPENDENTLY SUPPORTED CUSTOMER  
FIXTURE: FIELD CUT PENETRATION

CUBE CLIP (FACTORY APPLIED)

SUSPENSION (BY OTHER)

EYE-BOLT



TRIM PLATE (BY OTHER)

2

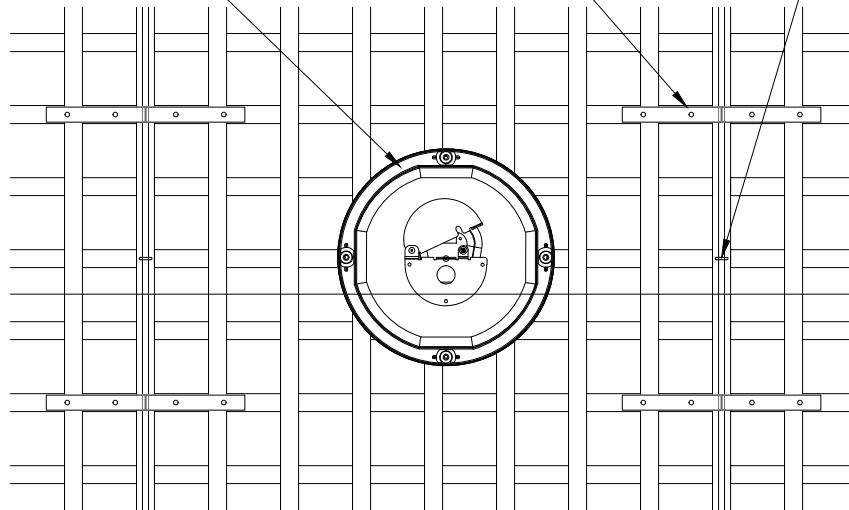
## PENDANT LIGHT DETAIL - SECTION VIEW

1 1/2" = 1'-0"

INDEPENDENTLY SUPPORTED CUSTOMER  
FIXTURE: FIELD CUT PENETRATION

CUBE CLIP (FACTORY APPLIED)

EYE-BOLT



2

1

## RECESSED SPEAKER DETAIL - PLAN VIEW

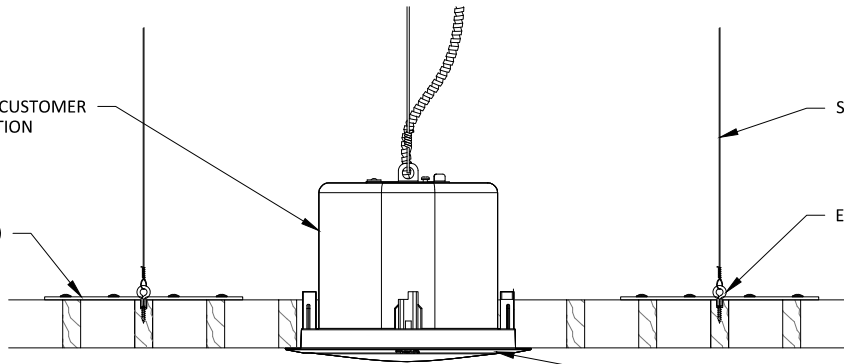
1 1/2" = 1'-0"

INDEPENDENTLY SUPPORTED CUSTOMER  
FIXTURE: FIELD CUT PENETRATION

CUBE CLIP (FACTORY APPLIED)

SUSPENSION (BY OTHER)

EYE-BOLT



TRIM PLATE (BY OTHER)

2

## RECESSED SPEAKER DETAIL - SECTION VIEW

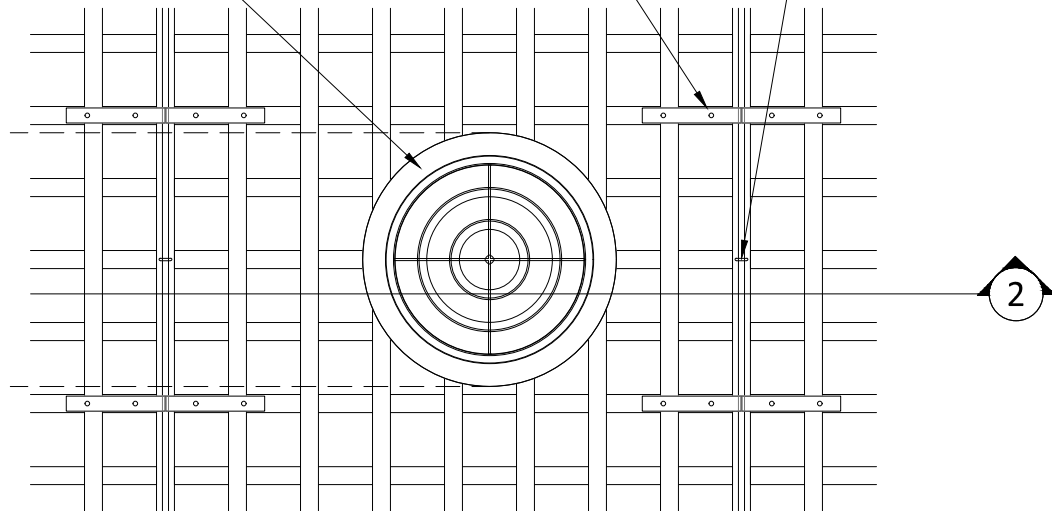
1 1/2" = 1'-0"



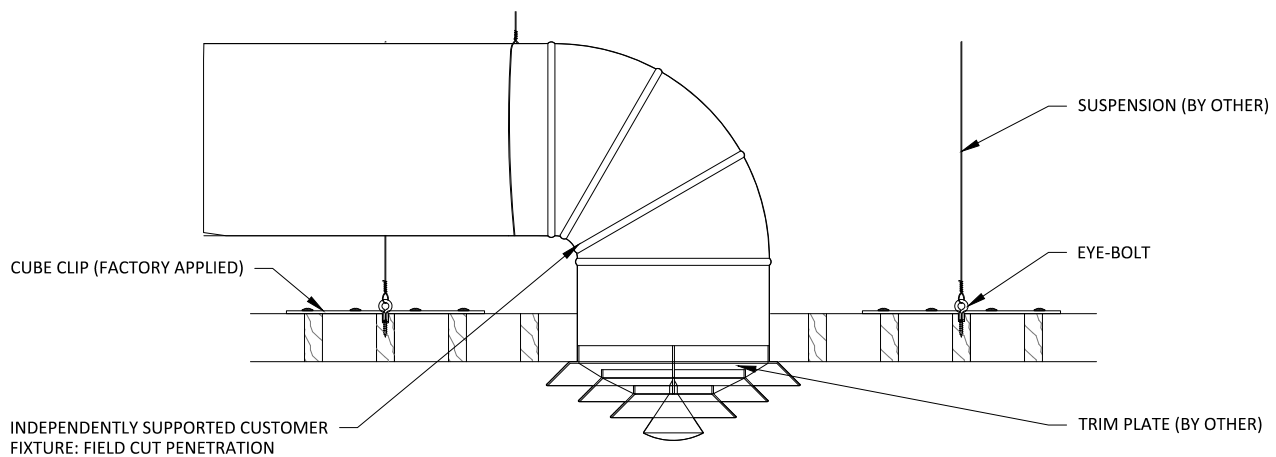
INDEPENDENTLY SUPPORTED DIFFUSER:  
FIELD CUT PENETRATION

CUBE CLIP (FACTORY APPLIED)

EYE-BOLT



1 DIFFUSER DETAIL - PLAN VIEW  
1 1/2" = 1'-0"



2 DIFFUSER DETAIL - SECTION VIEW  
1 1/2" = 1'-0"