

StrandTec

Wood Fiber Ceiling & Wall Panel



ASi
ARCHITECTURAL

123 Columbia Court North, Chaska, MN 55318 | 888.258.4637 | 952.448.6905
sales@asiarchitectural.com | www.asiarchitectural.com

StrandTec

Wood Fiber Ceiling & Wall Panel

StrandTec is now a leader in the eco-friendly, high-performance, cost-effective acoustical-panel products category. StrandTec (wood fiber) performs well by absorbing sound while thermally insulating; ecologically, it is simple to produce; and panels are available in many size and color variations that can be designed to fit nearly any décor.

These eco-friendly wood fiber panels not only liven up a room with design variety, but they also reduce echo and reverberation by sound absorption. Wood fiber panels can transform the aesthetics and acoustics of any interior space.

FEATURES

FEATURES & BENEFITS

- Manufactured from natural products
- Fire-resistant
- Mechanical fasteners
- An economical alternative to fiberglass, foam, polystyrene and rock wool

APPLICATIONS

Bars, restaurants, sports and entertainment venues, schools, music practice and band rooms, pools, convention centers, gymnasiums, houses of worship, manufacturing and industrial facilities, corporate spaces, airports, and more.

MATERIAL

Cementitious wood fiber consists of wood fibers, Portland cement and water. Wood fiber is a natural material and color variations are common.

MOUNTING

StrandTec Panels are to be mechanically fastened to an approved substrate.

WEIGHT

- 1" = 2 lbs./sf
- 1-3/8" = 3 lbs./sf
- 2" = 4 lbs./sf
- 1" Microstrand = 2.2 lbs./sf

FIRE RATING

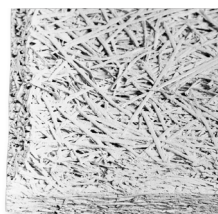
Class A per ASTM E-84.
Passes NFPA 286 Fire Test.

LIGHT REFLECTANCE

Unpainted .60.
White .70.



Paintable, with a wide range of colors.



Beveled Edge



Tegular Edge



Square Edge

StrandTec Wall Panel Acoustical Performance

Mount Thickness	A NRC/SAA	D-20 NRC	C-25 NRC	C-50 NRC
1"	0.45	0.50	0.80	0.85
1" Microstrand	0.60	0.50	0.80	0.95
1-3/8"	0.55	0.60	0.85	0.90
2"	0.75	0.75	0.90	0.95

StrandTec Wall Panel Product Details*

Thickness	Width	Lengths	Edge Detail	Factory Finish
1"	24"	48", 96"	Beveled, Square	Primed Clear, Primed White, Custom Paint
1-3/8"	24"	48", 96"	Beveled, Square	Primed Clear, Primed White, Custom Paint
2"	24"	48", 96"	Beveled, Square	Primed Clear, Primed White, Custom Paint

*Custom sizes available.

StrandTec Ceiling Tile Product Details*

Thickness	Width	Lengths	Edge Detail	Factory Finish
5/8"	23-3/4"	23-3/4", 47-3/4"	Square	Primed Clear, Primed White, Custom Paint
1"	23-3/4"	23-3/4", 47-3/4"	Tegular, Square	Primed Clear, Primed White, Custom Paint
1-3/8"	23-3/4"	23-3/4", 47-3/4"	Tegular, Square	Primed Clear, Primed White, Custom Paint
2"	23-3/4"	23-3/4", 47-3/4"	Tegular, Square	Primed Clear, Primed White, Custom Paint

*Custom sizes available.



Installation
Video
Available

123 Columbia Court North, Chaska, MN 55318 | 888.258.4637 | 952.448.6905
sales@asiarchitectural.com | www.asiarchitectural.com

©2023 ASI Architectural V4