

StrandTec Lay-in Ceiling Tiles



ASI
ARCHITECTURAL

123 Columbia Court North, Chaska, MN 55318 | 888.258.4637 | 952.448.6905
sales@asiarchitectural.com | www.asiarchitectural.com

StrandTec

Lay-in Ceiling Tiles

StrandTec Lay-in Ceiling Tiles lead the acoustical panel products category as an eco-friendly, high-performing, and cost-effective sound absorber that manages echo and reverberation to improve the acoustics in a room or space. Ecologically, StrandTec is simple to produce with three natural ingredients: wood fiber, water and Portland cement. StrandTec Lay-in Ceiling Tiles are Class A fire-rated and pass the NFPA 286 fire test. In addition, they meet the California Department of Public Health VOC emissions standards, making them eligible for LEED credits. The tiles are also highly resistant to microbial and fungal growth, and they are an optimal choice for a variety of public or private spaces. Standard-sized lay-in ceiling tiles have quick lead times and can be installed easily by dropping them into a standard 15/16" H.D. T-Grid. With a state-of-the-art manufacturing process, StrandTec Lay-in Ceiling Tiles are manufactured with even thicknesses, consistent dimensions, and clean, square edges.

The economical StrandTec Lay-in Ceiling Tiles not only liven up a room's aesthetics with design variety and visual interest, but they can also be paired with a cellulose acoustical backer to improve the tiles' acoustical performance.



Square Edge

StrandTec Lay-in Ceiling Tile Product Details*

Thickness	Width	Lengths	Edge Detail	Factory Finish
1"	23-3/4"	23-3/4", 47-3/4"	Square	Primed Clear, Primed White, Custom Paint
1-3/8"	23-3/4"	23-3/4", 47-3/4"	Square	Primed Clear, Primed White, Custom Paint
2"	23-3/4"	23-3/4", 47-3/4"	Square	Primed Clear, Primed White, Custom Paint

*Custom sizes available.

StrandTec Lay-in Ceiling Tile Acoustical Performance

Panel Thickness	No Backer (E-400 Mount)	1" CFAB Backer (E-400 Mount)	2" CFAB Backer (E-400 Mount)
1"	0.40	.80	.80
1" Microstrand	0.40	.80	.80
1-3/8"	0.60	.85	.90
2"	0.75	.95	.95

FEATURES

FEATURES & BENEFITS

- Manufactured from natural products
- Fire-resistant
- Mechanical fasteners
- An economical alternative to fiberglass, foam, polystyrene and rock wool

APPLICATIONS

Schools and civic centers (gymnasiums, classrooms, auditoriums, music practice and band rooms), restaurants and bars, sports and entertainment venues, convention centers, houses of worship, shooting ranges, manufacturing and industrial facilities, parking garages, airports, and more.

MATERIAL

Cementitious wood fiber consists of wood fibers, Portland cement and water. Wood fiber is a natural material and color variations are common.

SIZES

Standard Sizes

23-3/4" x 23-3/4"

23-3/4" x 47-3/4"

THICKNESS

5/8", 1", 1-3/8", 2"

1" Microstrand option.

FINISHES

Primed Clear, Primed White, Painted.

INSTALLATION METHOD

Lay-in.

FIRE PERFORMANCE

Class A per ASTM E-84.

Passes NFPA 286 Contribution to Room Fire Growth Test.

LIGHT REFLECTANCE

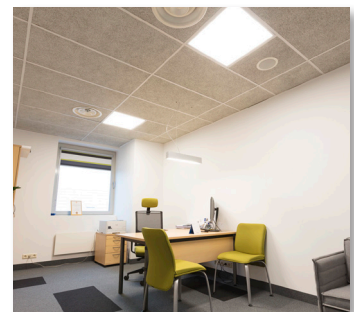
Primed Clear – 50, Primed White – 70.

ENVIRONMENTAL

- Passes CDPH Standard Method V1.2-2017 (VOC Emissions).
- Passes ASTM D3273 test (100% clear of fungal growth).
- Passes Mold Resistance test based on Greenguard Microbial Growth Test (highly resistant to mold growth).



Paintable, with a wide range of colors.



ASi
ARCHITECTURAL



Installation
Video
Available

123 Columbia Court North, Chaska, MN 55318 | 888.258.4637 | 952.448.6905
sales@asiarchitectural.com | www.asiarchitectural.com

© 2022 ASI Architectural V1